


**Missa: Kyrie : Schloßkirchengemeinde Schwerin, MU 093 IV-104**

<http://purl.uni-rostock.de/rosdok/ppn1772040789>

Musikhandschrift    Freier  Zugang







*Missa: "Kyrie"*

*4 vocum*

*non*

*L. Hasler.*

*11 Sopr.*

*11 Alt.*

*4 Ten.*

142

98.



Missa. Soprano. Leo Hasler

Ky-ri-e - e lei-son Ky-ri-e

e lei - - - son.

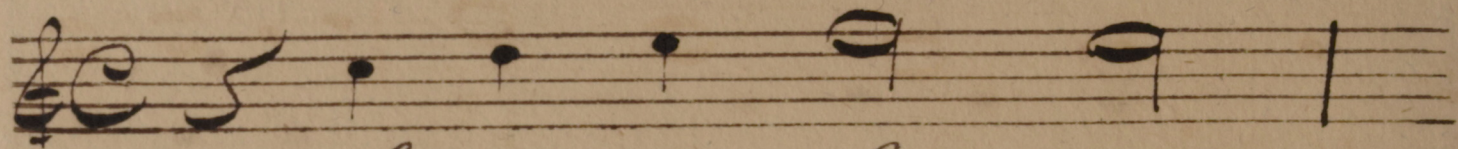
Ky-ri-e e lei-son Ky-ri-e e -

lei-son Ky-ri-e - e - lei -

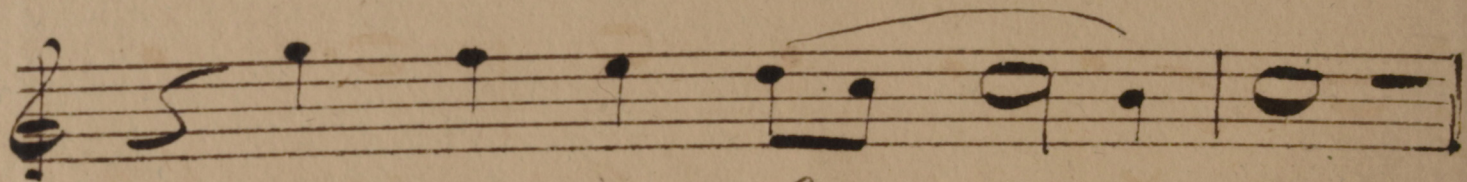
- - son, Ky-ri-e - e - lei -

son Christe e - lei-son.

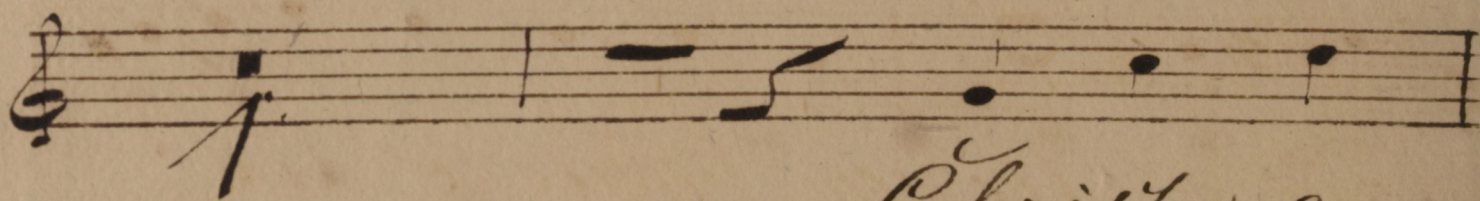




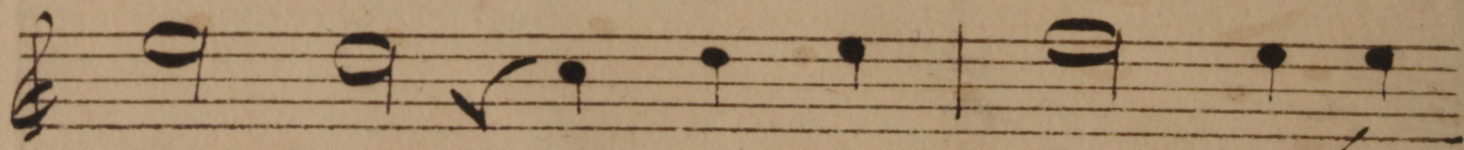
Christe e - lei son



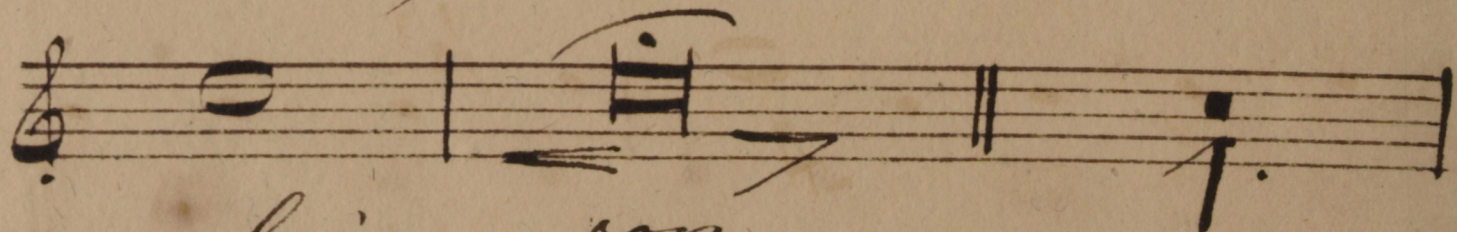
Christe e - lei — son



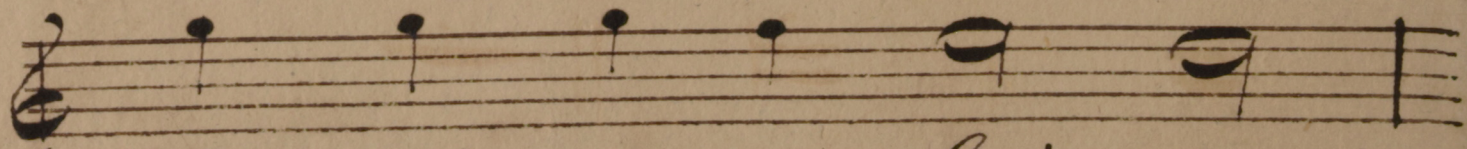
Christe e —



leison, Christe e - leison e —

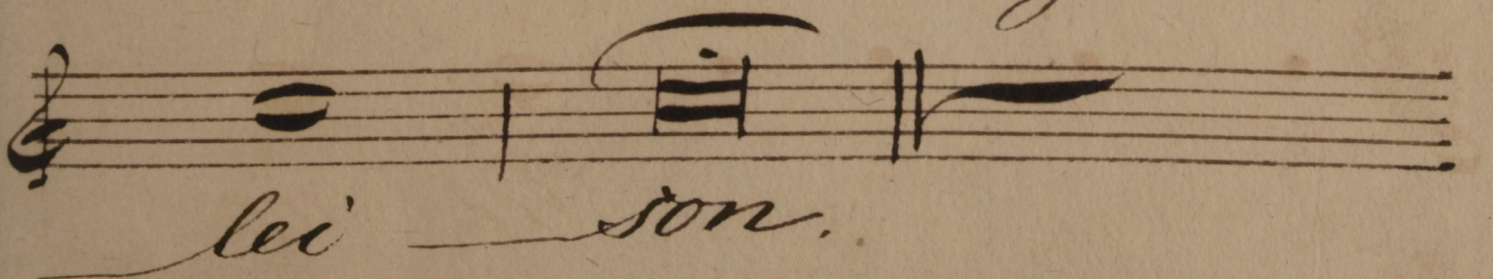
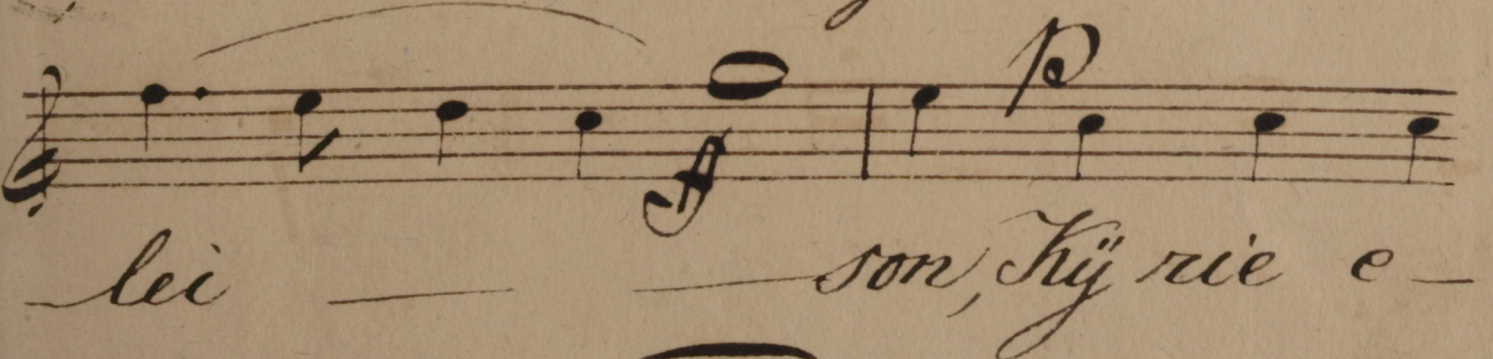
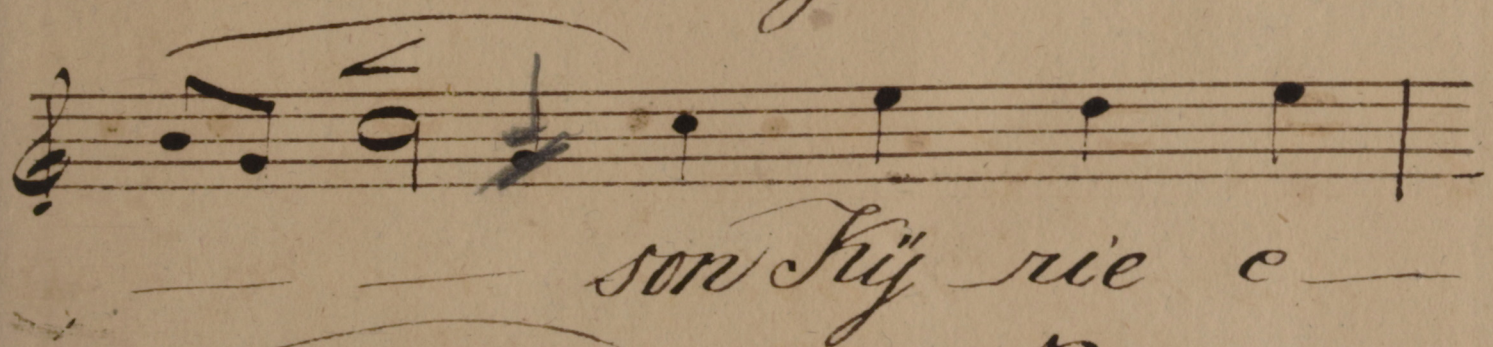
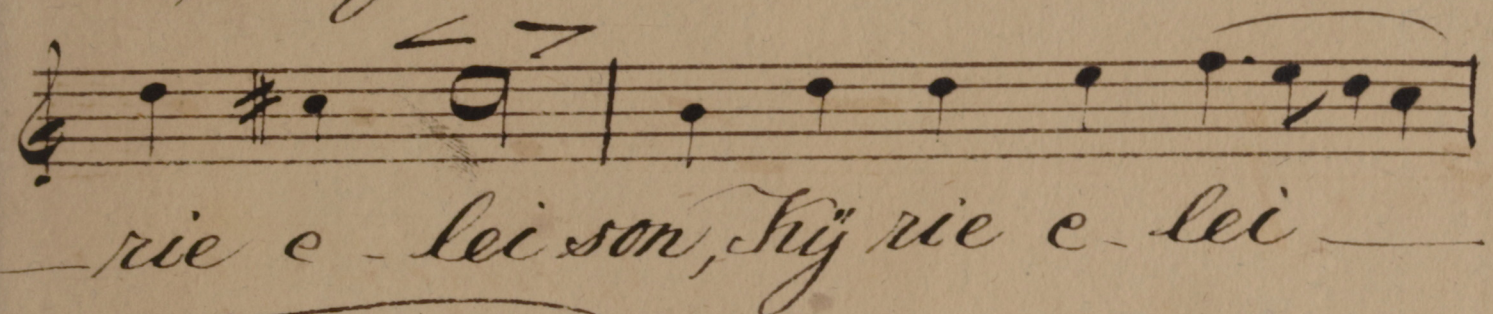
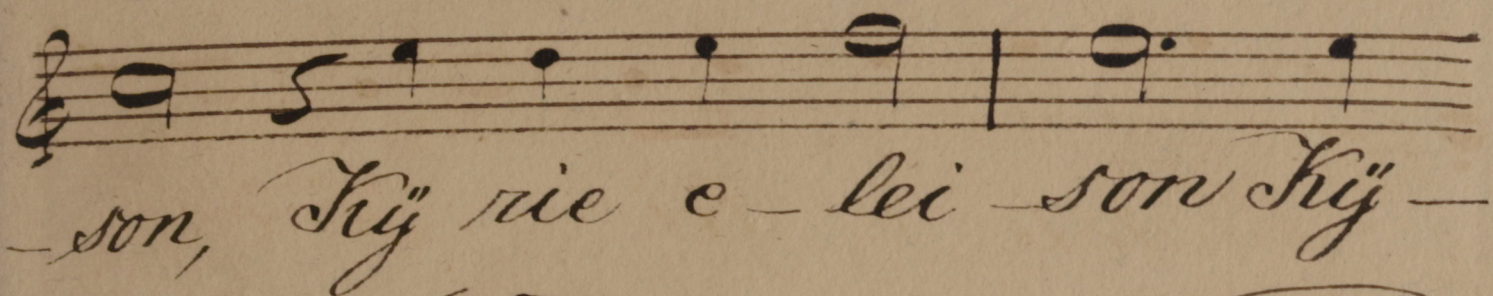
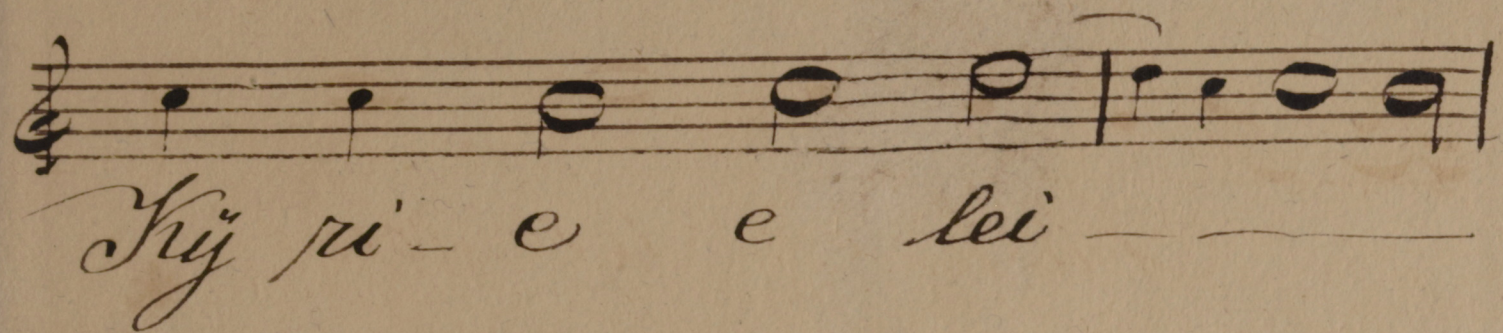


— lei — son.



Trü ri - e e - lei - son







4



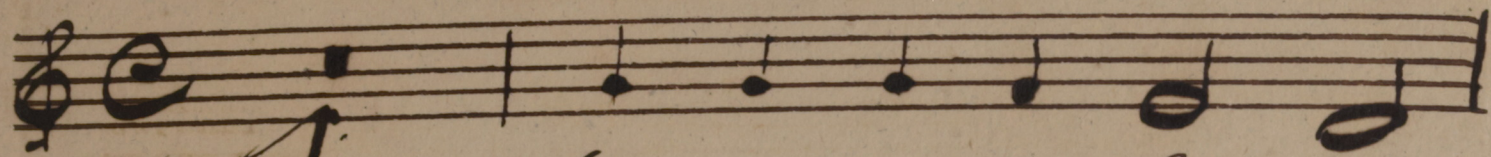


Missa.

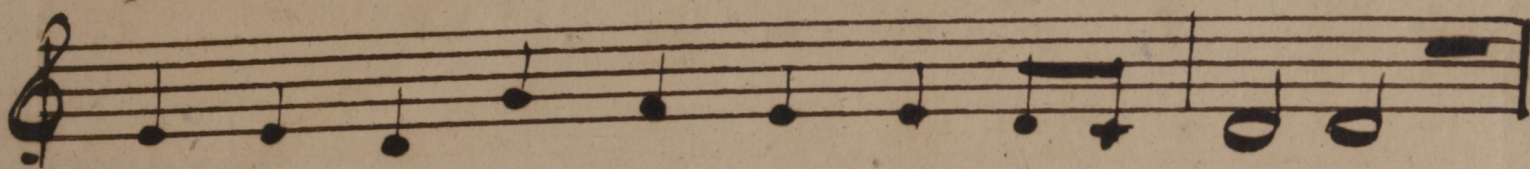
Altus.

Leo Hasler

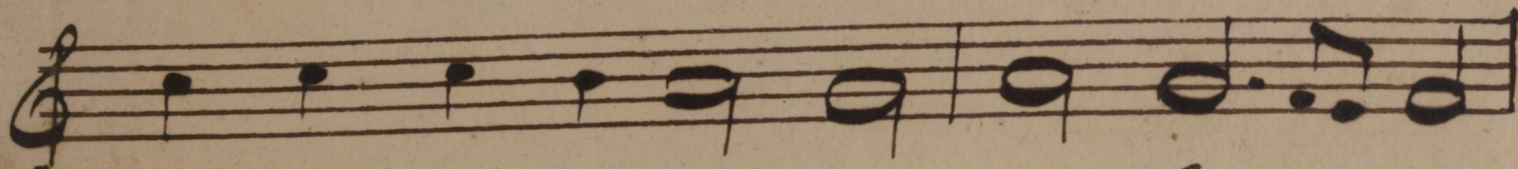
5



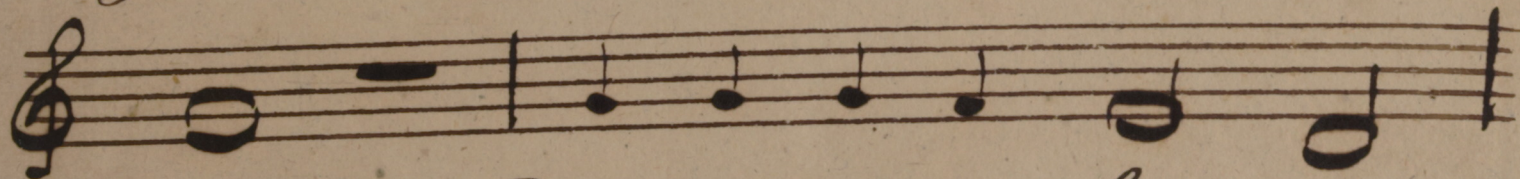
Ky-ri-e-e-lei-son



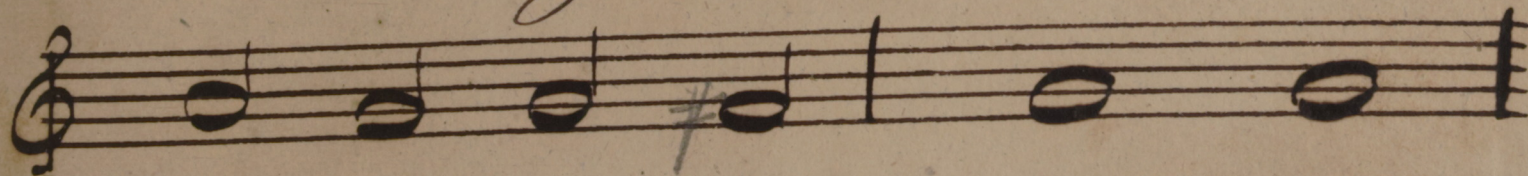
Ky-ri-e-e-lei-son



Ky-ri-e-e-lei-son e-lei-



son. Ky-ri-e-e-lei-son



Ky-ri-e-e-lei-son



Ky-ri-e-e-lei-son



Christe e-lei son Christe e-

leison e lei — son Chri-

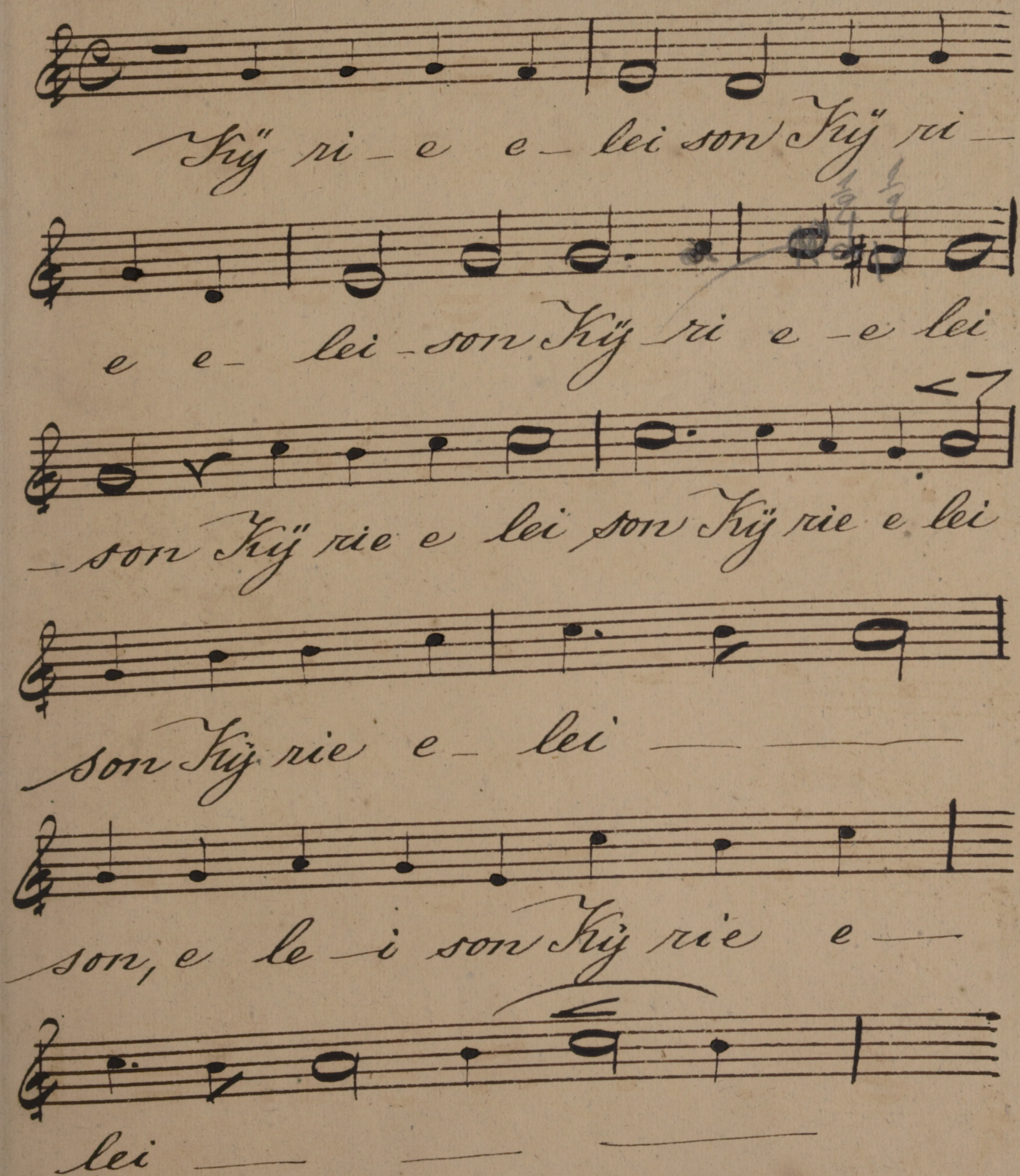
ste e-lei son Christe e-lei

son e-lei son Christe e-

lei — — — son Chri-

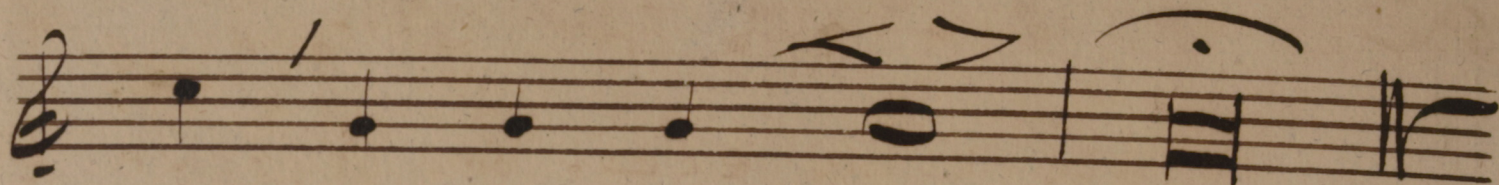
ste e-lei' — — — son.



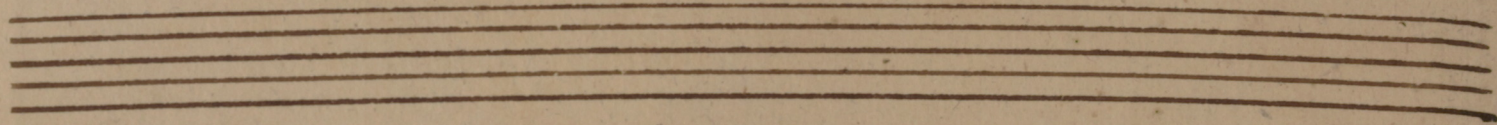


Ky-ri-e e-lei-son Ky-ri-  
 e e-lei-son Ky-ri e-e lei  
 -son Ky-rie e-lei-son Ky-rie e-lei  
 -son Ky-rie e-lei-  
 son, e-lei-son Ky-rie e-  
 lei-





son, Ky rie e - lei - son





Missa:

Tenore:

Leo Hasler<sup>9</sup>

Kyri-e eleison Ky-rie elei-

son, Ky-rie eleison Ky-rie e-

leison, Ky-rie elei-son, Ky-

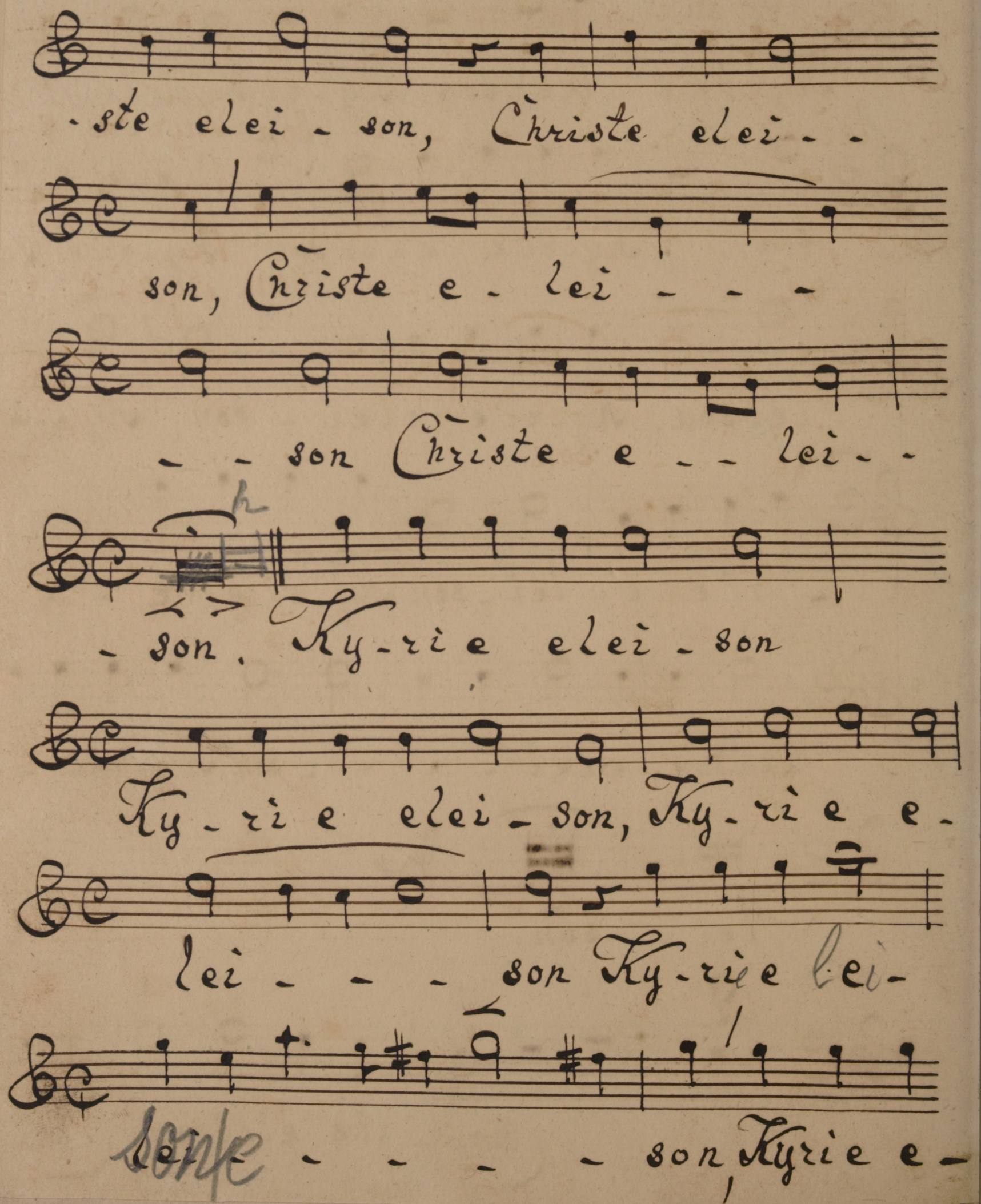
-rie e-lei-son Ky-rie e-

leison elei- - - son Ky-rie e.

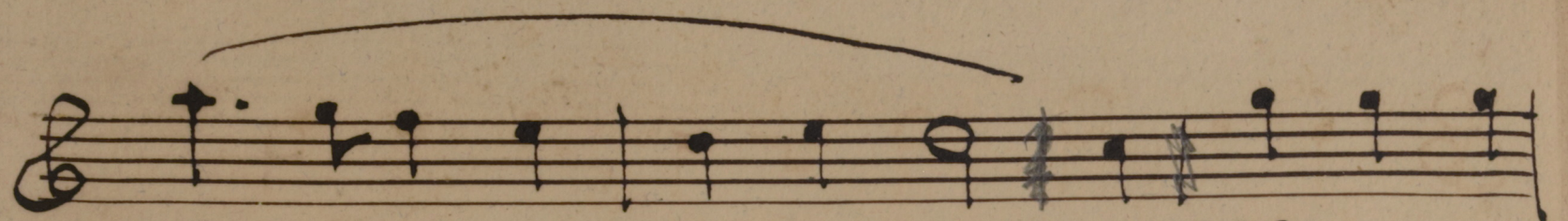
lei-son.

2  
Chri-ste eleison, Chri-

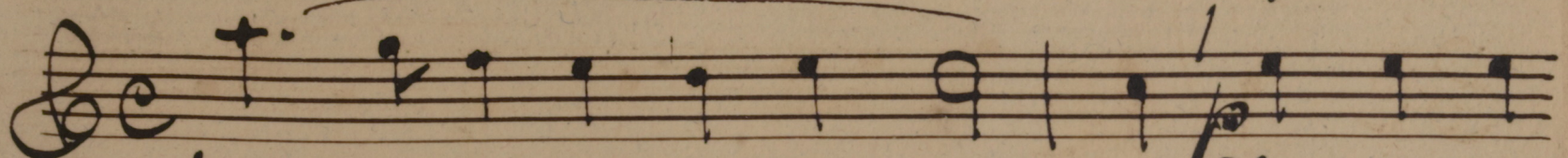



  
 - ste elei - son, Christe elei - -
   
 son, Christe e - lei - - -
   
 - - son Christe e - - lei - -
   
 - son. Kyrie elei - son
   
 Ky - rie elei - son, Ky - rie e -
   
 lei - - - son Ky - rie lei -
   
 son, Kyrie e -

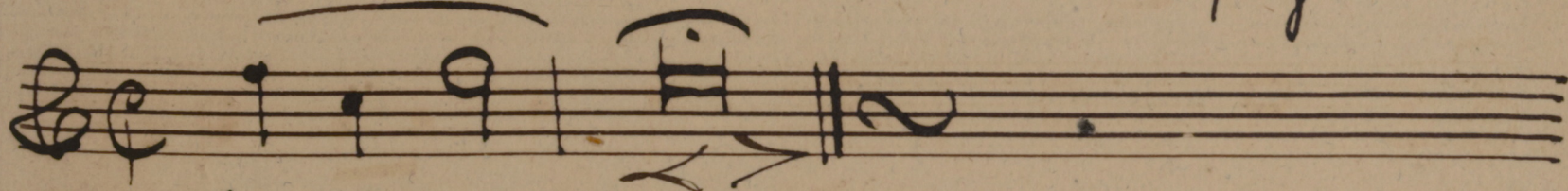




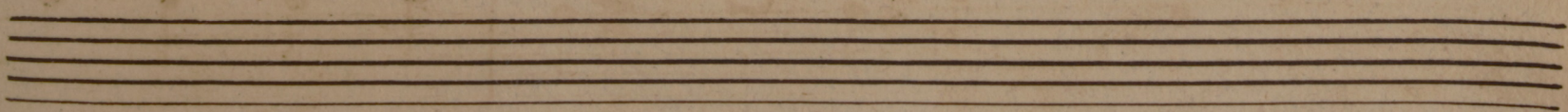
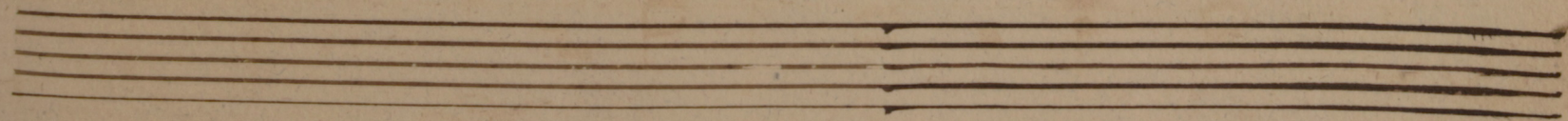
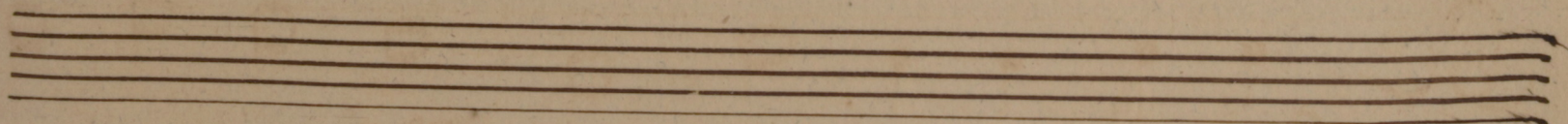
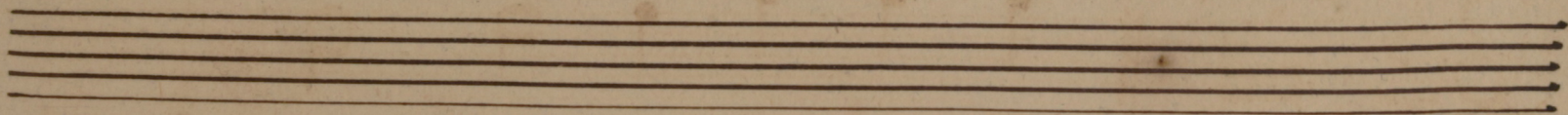
lei - - - - - son Kyrie e -



lei - - - - - son, Kyrie e -

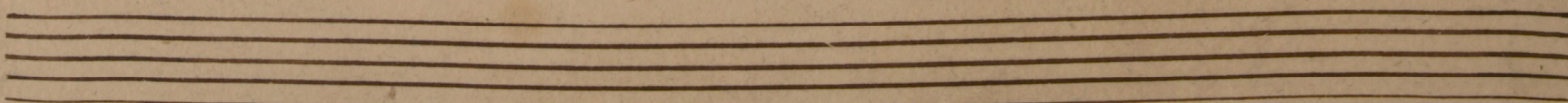
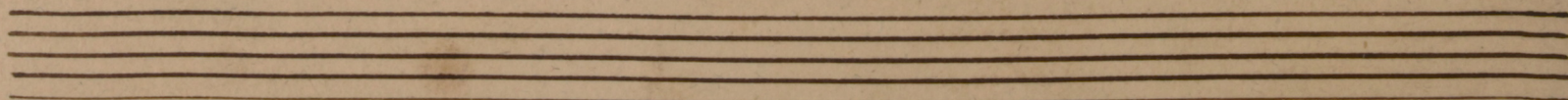
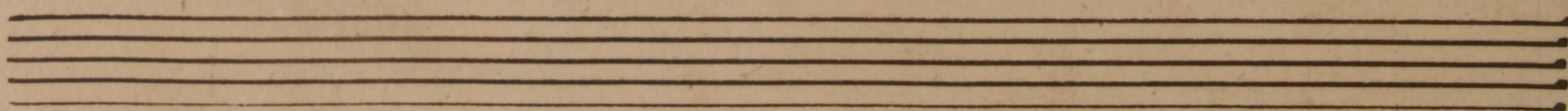
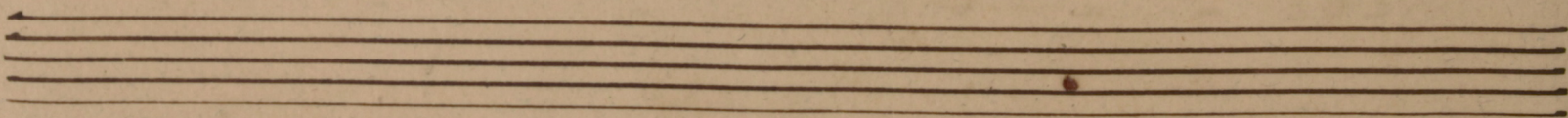
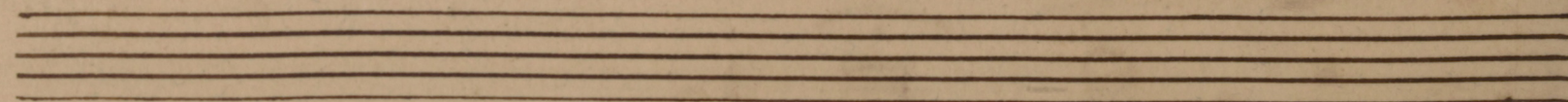
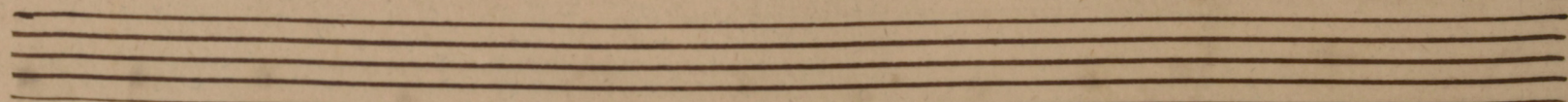
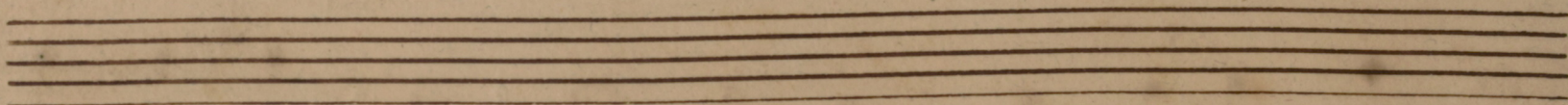


lei - - son



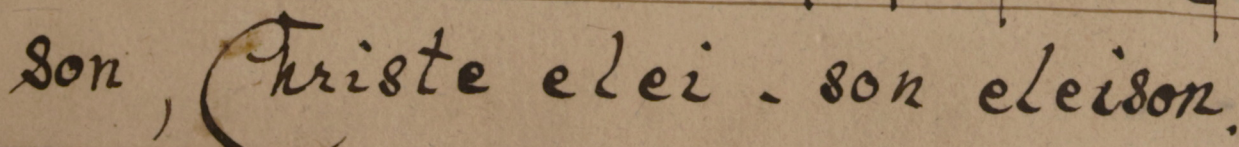
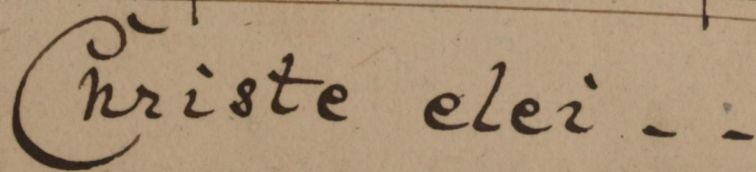
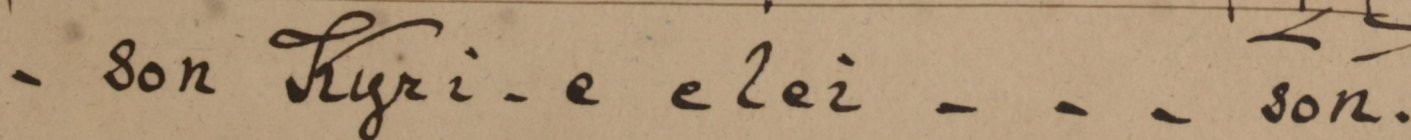
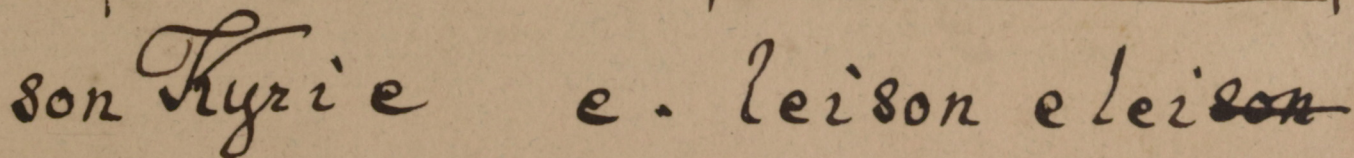
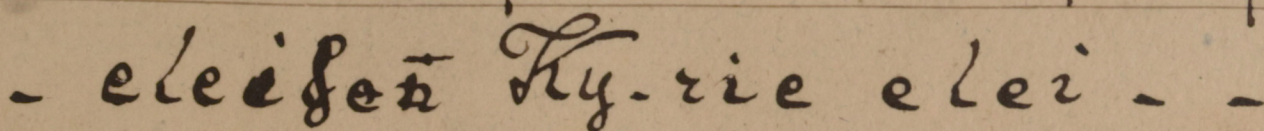
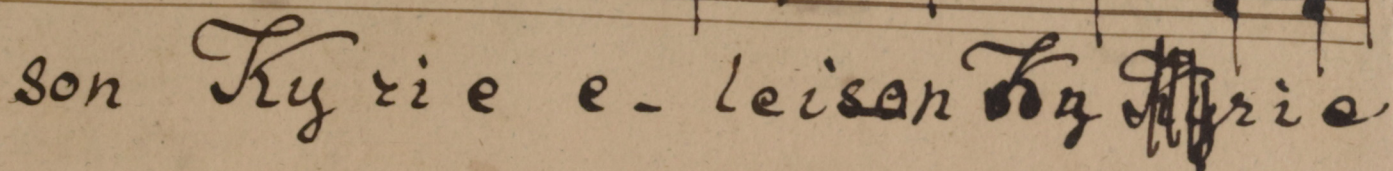
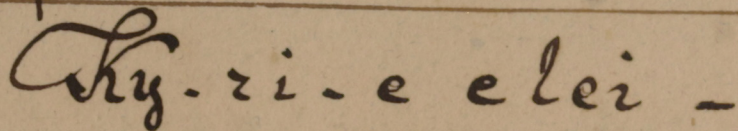


12





## 13





Christe eleison Christe e-

- lei- son. Kyrie- e e.

leison Kyrie e- lei, ~~son~~

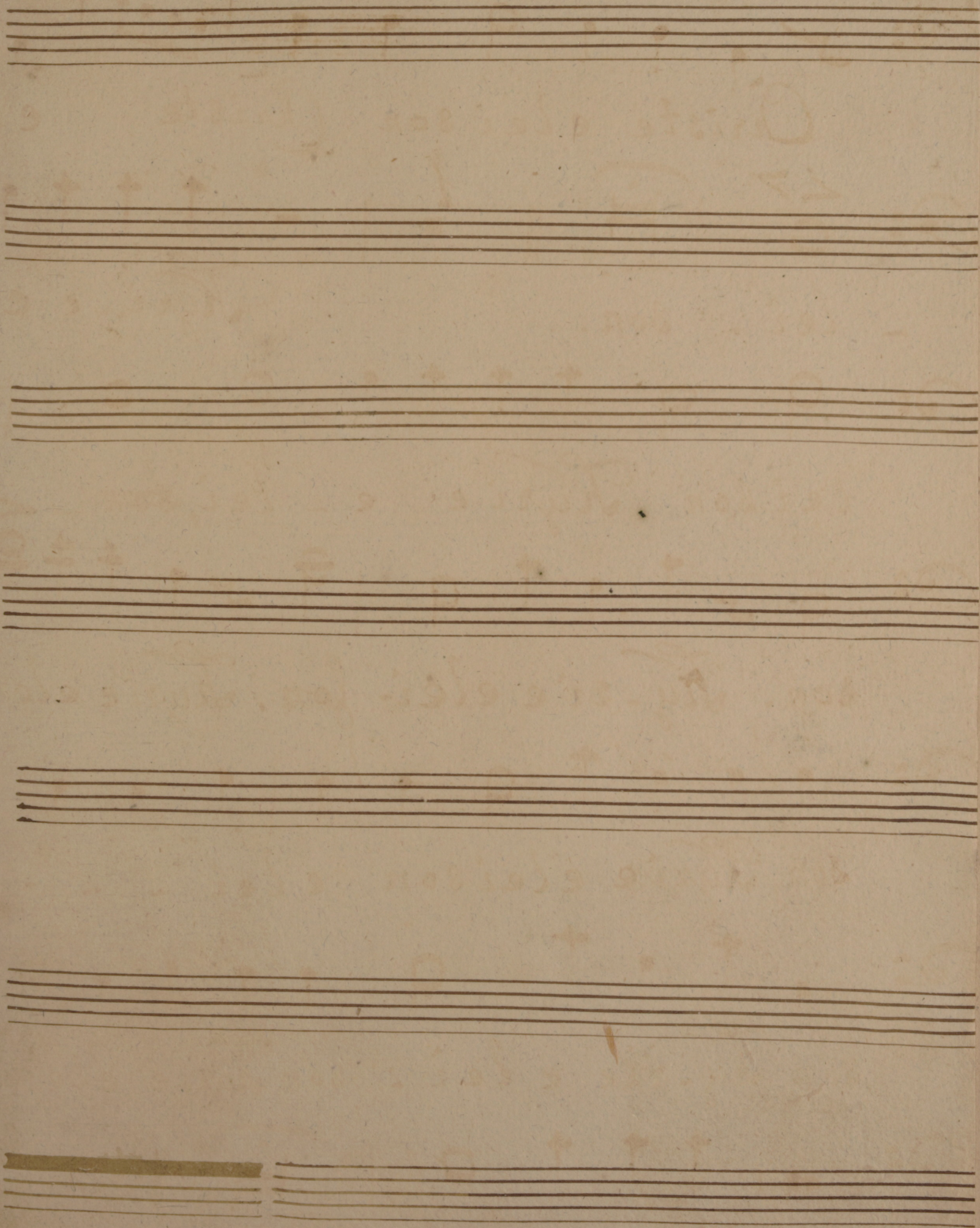
son. Ky-rie elei-son. Kyrie elei-

son, Kyrie eleison elei- -

son Ky-rie e lei- son Kyrie elei-

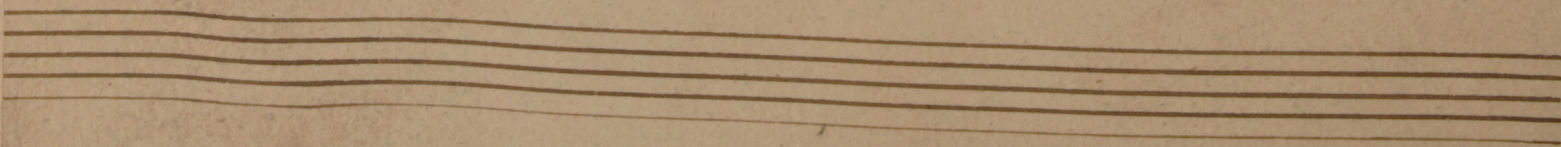
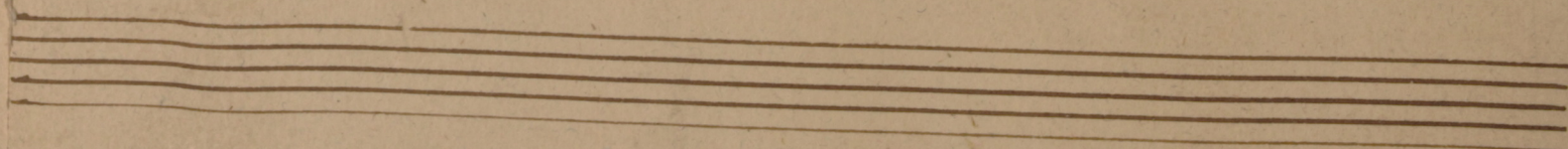
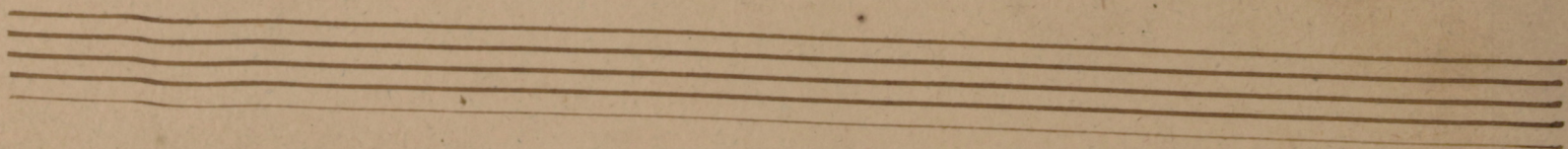
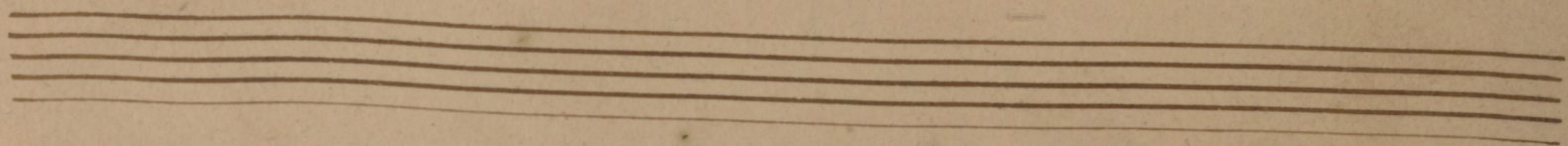
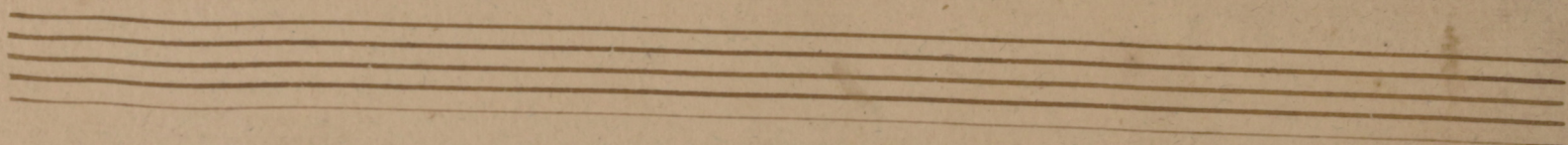
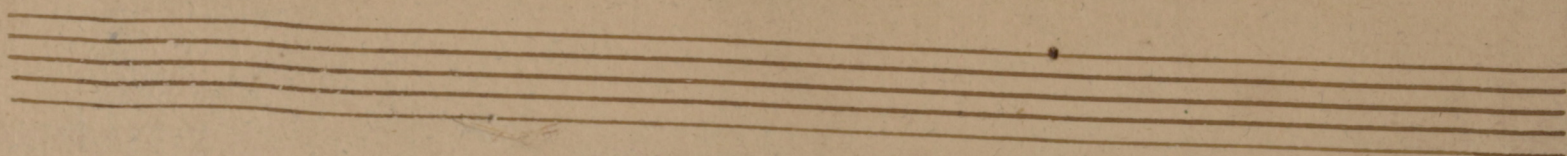
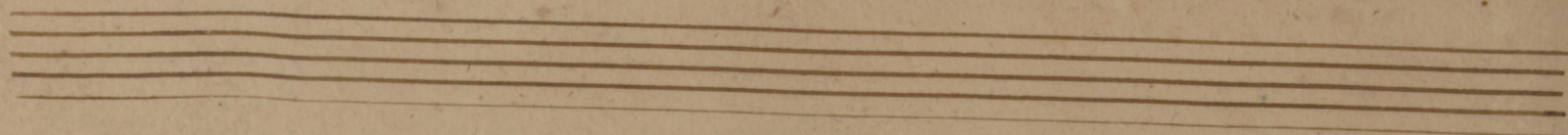
- son, Kyrie e- lei- son.







16





Hascher

Missa:

4 Priming



MU 093 IV-104

H. L. Haßler, Missa (Kyrie)



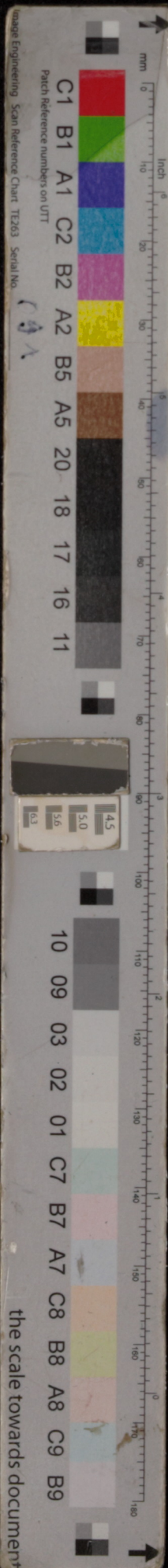
Schloßkirchen-  
Gemeinde



**Ev.-Luth. Schloßkirchengemeinde  
Schwerin**

Evangelisch-Lutherischer  
Kirchenkreis Mecklenburg

Depositum in der Bibliothek des  
Landeskirchenamts Schwerin  
<https://nordkirche.bibliotheca-open.de/>



Schloßkirchen-  
gemeinde  
Schwerin

[http://purl.uni-rostock.de  
/rosdok/ppn1772040789/phys\\_0019](http://purl.uni-rostock.de/rosdok/ppn1772040789/phys_0019)

Mecklenburg  
Vorpommern

