


**Valde honorandus est beatus Joannes : Schloßkirchengemeinde Schwerin, MU
093 IV-158**

<http://purl.uni-rostock.de/rosdok/ppn1772738166>

Musikhandschrift Freier  Zugang



Motetto: Valde honorandus est
" beatus Joannes": A vocum,

von
Pierl. Palestrina

Partitur

10 Stimmen

8 Alt

6 Tenor

6 Bass

Grossherzog. Schlosschor.

1800.



291



In festo S. Joannis Evangelistae.

Paestrino.

1. 2. 3. 4.

Val - de ho - no -

Val - de ho - no-ran-dus est,



5. 6. 7. 8.

Val - de ho - no-randus

ran-dus est,

val - de ho - no - ran -

9. 10. 11. 12.

est, ho - no -
 val - de, val -
 dus est, val -
 Val - de ho - no - ran - dus - est, val

13. 14. 15. 16.

val -
 de ho - no - ran - dus est, ho - no -
 de ho - no - ran - dus est,
 de, ho - no - ran - dus est,

17. 18. 19. 20.

de ho - no - ran - dus est, ho - no - ran - dus
 ran - dus est, val - de ho - no - ran -
 ho - no - ran - dus est, ho - no -
 val - de ho - no -

21. 22. 23. 24.

est be - a - tus Jo - an -
 dus est. be - a - tus Jo - an -
 ran - dus est be - a -
 ran - dus est be - a - tus.

25. 26. 27. 28

nes, be-a-tus Jo-an-nes, be-
 nes, be-a-tus Jo-an-
 tus Jo-an
 be-a-tus Jo-an-nes, be-

29. 30. 31. 32.

a-tus Jo-an-nes, qui su-pra-
 nes, be-a-tus Jo-an-nes, qui
 nes, be-a-tus Jo-an-nes, qui
 a-tus Jo-an-nes,

33. 34. 35. 36

pec - tus Do mi - ni, Do

su - pra pec - tus Do mi - ni

su - pra pec - tus Do mi - ni, Do -

qui su - pra

37. 38. 39. 40.

mi - ni, qui su - pra

qui su - pra pec - tus Do

mi - ni, qui su - pra pec - tus Do

pec - tus Do mi - ni,

41. 42. 43. 44.

pec-tus Do mi-ni
mi-ni
mi-ni, Do mi-ni in
Do mi-ni in

45. 46. 47. 48.

in coe-na re-cu
in coe-na re-cu bu-it, in
coe-na re-cu bu-it,
coe-na re-cu bu-it, in coe-na-

49. 50. 51. 52.

coe — na re-cu — bu-it,
 in coe — na re-cu — bu-it,
 re-cu — bu-it,

pp 53. 54. 55. 56.

cu — i Chri — stus in
 cu — i Chri — stus in
 cu — i Chri — stus in eru —
 cu — i Chri — stus in

57. 58. 59. 60.

eru — ce ma — trem — vir — gi —

eru — ce ma — trem vir — gi —

ce ma — trem vir — gi —

eru — ce

61. 62. 63. 64.

nem vir — gi — ni com — men —

nem, ma — trem vir — gi — nem vir — gi —

nem, ma — trem vir — gi — nem

ma — trem vir — gi — nem

65. 66. 67. 68.

da vit, vir-
 ni com-men-da-vit, vir-gi-
 vir-gi - ni — com - menda
 vir - gi - ni com - menda

69. 70. 71. 72.

- gi-ni com-menda, vit, commenda-
 ni com-menda, vit, vir-gi-ni com-
 vit vir-gi-ni com-
 vit, vir-gi-ni com-men-da-vit, com-men-

73. 74. 75. 76.

men-da - vit, vir - gi - ni com - men -
 menda - vit, vir - gi - ni com - men -
 da - vit, vir - gi - ni com - men -

77. 78.

da - vit.
 da - vit.
 da - vit.

In festo S. Joannis Evangelistae.

Palestrino.

Tenor 1. 2. 3. 4.

Val - de ho - no - randus est,

Sopran 5. 6. 7. 8.

val Val - de ho - no - randus

9. 10. 11. 12.

est, ho no -

Tenor. 14. 15. 16. Sopran.

ran - dus est, val -

17. 18. 19.

de ho - no - randus est, ho -

20. 21. 22. 23.

no - ran - dus est be - a - tus Jo -

24. 25.

an

26. 27. 28.

nes, be - a - tus - Jo - an - nes, be -

29. 30. 31.

a - tus - Jo an -

32. 33. 34.

nes, qui su - pra pec - tus Do -

Sopran.

35 mi - ni Do 36. 37 mi - ni, 38

Tenor 39. Sopran. 40 supra pectus. qui supra pectus Do 41 42.

43 mi - ni 44. 45. Tenor 46 eu

Sopran 47 in coe - na re - eu 48. 49. 50

51. 52. pp. 53. 54 bu - it, eu - i Chri -

55 stus in cru - ce ma - 56. 57. 58

59 trem - vir - gi - nem, 60. 61. Tenor 62. 62.

Sopran 64 65 vir - gi - ni com - men - da

66. 67 68 69 vit, vir - gi - ni com -

70. 71 72. 73 menda - vit - com - menda

74 75 76. 77 78 vit.

In festo S. Joannis Evangelistae.

Palestrino.

Tenor. 2. All. 3 4

1. Val-de Val-de ho-no-

5 6 7 8

randus est,

9 10 11 12 13

val-de, val-de ho-

14 15 16

no-randus est, ho-no-

17 18 19 20

ran-dus est, val-de ho-no-ran-

21 22 23 24

cus est be-a-tus Jo-an-

25 26 27 28

nes, be-a-tus Jo-an-

29 30 31 32

nes, be-a-tus Jo-an-nes, qui

33 34 35 36

supra pec-tus Do mi-ni

Tenor 37 All. 38 39 40

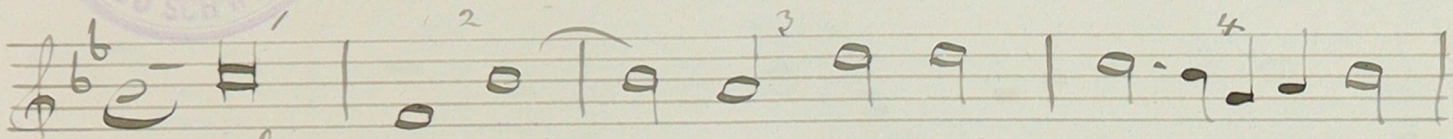
mi-ni qui supra pectus Do

Alt.

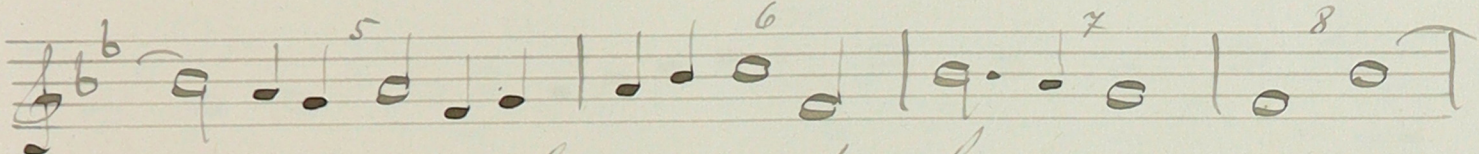
41 mi - ni in coe -
42. 43 44 45
46 na re - cu - bu - it, in coe -
47 48 49
50 na re - cu - bu - it, cu -
51 52 53
54 i Chri - stus in cru - ce
55 56 57 58
59 ma - trem vir - gi - nem, ma -
60 61
62 trem vir - ginem vir - gi -
63 64
65 ni com - men - da - vit
66 Tenor 67
68 Alt. 69 70
71 vir - gi - ni com - men - da -
72 73
74 vit, vir - gi - ni com - men - da -
75 76
77 vit, vir - gi - ni com - men -
78 da - vit.

In festo S. Joannis Evangelistae.

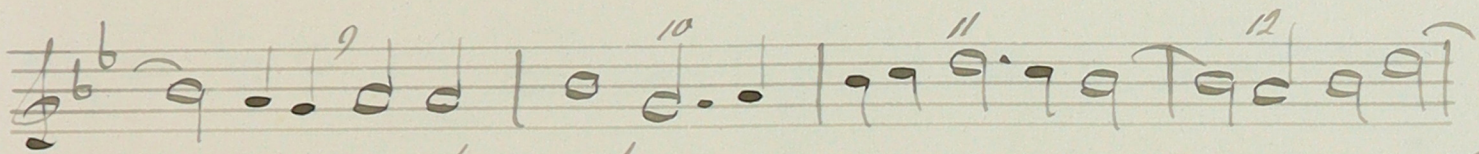
Palestrino.



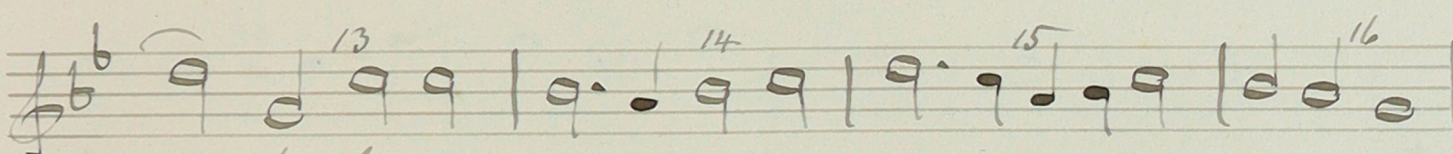
Val - de ho - no - randus est



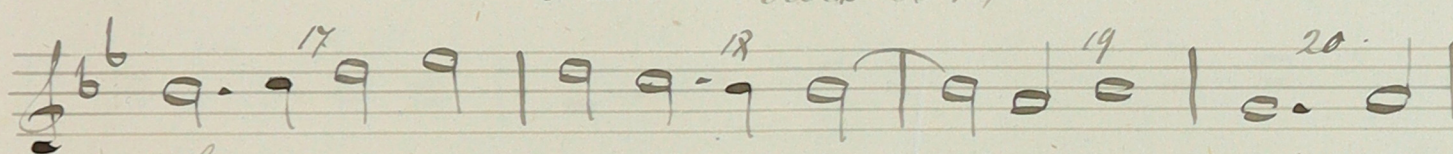
val - de ho - no - ran -



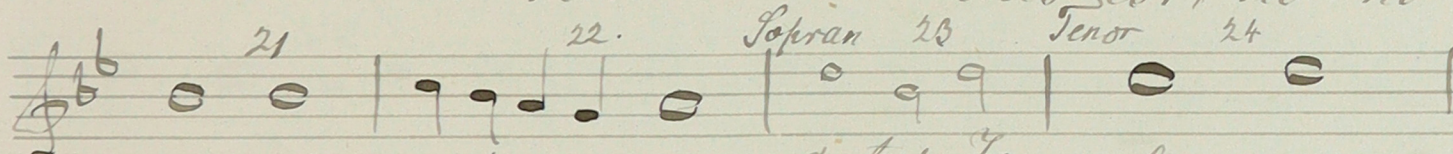
du - est val -



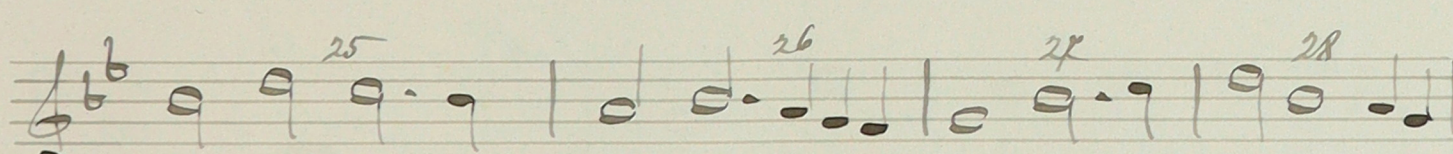
de ho - no - ran - dus est,



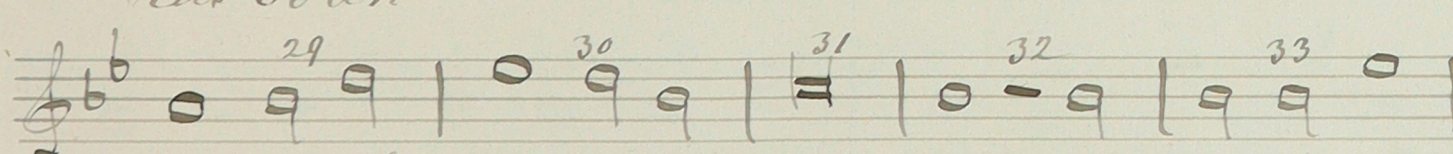
ho - no - ran - dus est, ho - no -



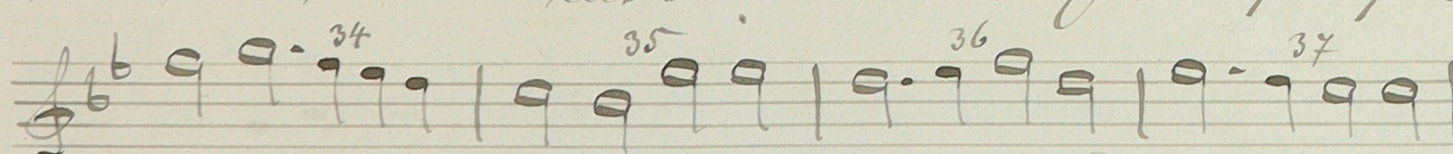
randus est *Sopran* a - tus Jo - *Tenor* be - a -



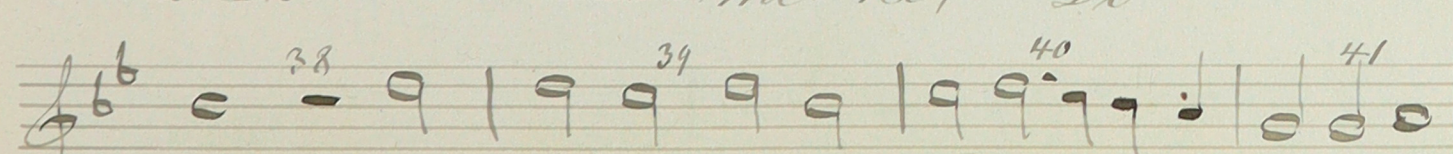
tus Joan



nes, be - a - tus Jo - an - nes, qui supra pec -



tus Do - mi - ni, Do - mi -



ni, qui supra pectus Do - mi - ni

Tenor.

42. 43. 44. 45.

Do mi - ni in coe - na re -

46. 47. 48. 49.

cu bu - it, in coe -

50. 51. 52.

na re - cu bu - it

53. 54. 55. 56.

cu - i Chri - stus in cru -

57. 58. 59. 60.

ce ma - trem vir gi -

61. 62. 63. 64.

nem, ma - trem vir ginem

Sopran 65. Tenor 66. 67.

da vir - gi - ni com -

68. 69. 70. *All.*

menda vit menda

71. 72. 73. *Tenor*

vit, vir - gi - ni com - menda -

74. 75. 76.

vit, vir - gi - ni com - men -

77. 78.

da - vit.

In festo S. Joannis Evangelistae.

Palestrino.

Tenor. 1.

2.

3.

4.

Musical notation for Tenor 1-4, measures 1-4. Lyrics: Val-de ho-no-randus est,

Musical notation for Tenor 5-8, measures 5-8. Lyrics: val de ho-no-ran-

Musical notation for Bass 9-12, measures 9-12. Lyrics: Val-de ho-no-randus est, val

Musical notation for Bass 13-16, measures 13-16. Lyrics: de, ho-no-randus est,

Musical notation for Tenor 17 and Bass 18, measures 17-20. Lyrics: ho-no-ran-

Musical notation for Soprano 24, measures 21-24. Lyrics: de ho-no-randus est be-a-tus an-

Musical notation for Bass 26, measures 25-28. Lyrics: be-a-tus Jo-an-nes be-

Musical notation for Bass 30-32, measures 29-32. Lyrics: a-tus Jo-an-nes,

Musical notation for Tenor 33-35, measures 33-35. Lyrics: supra pec-tus Do-mi

Musical notation for Bass 36-38, measures 36-38. Lyrics: qui supra pec-tus Do-

Bass.

39 40 41

mi-ni,

42 43 44 45

Do mi-ni in coe-na-re-

49 50 51 52

cu bu-it, in coe-na-

53 54 55 56

re-cu bu-it,

57 58

cu - i Chri - stus in

59 60

eru - ce ma-trem vir gi

61 62 63 64

ma - trem vir gi - nem

65 66 67

da vit vir - gi - ni com-

68 69 70 71

menda - vit, vir - gi - ni com - menda - vit,

72 73 74 75

com - men - da - vit, vir - gi - ni

76 77 78

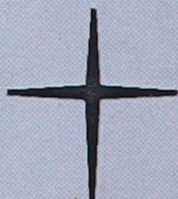
com - men - da - vit.

MU 093 IV-158

G. P. da Palestrina, Valde honorandus est



Schloßkirchen-
Gemeinde



**Ev.-Luth. Schloßkirchengemeinde
Schwerin**

Evangelisch-Lutherischer
Kirchenkreis Mecklenburg

Depositum in der Bibliothek des
Landeskirchenamts Schwerin
<https://nordkirche.bibliotheca-open.de/>

