

Tu es Petrus : Schloßkirchengemeinde Schwerin, MU 093 VI-21

<http://purl.uni-rostock.de/rosdok/ppn1774471051>

Musikhandschrift Freier  Zugang



144.

Tu es Petrus.

6 vocum.

Palestrina.

144

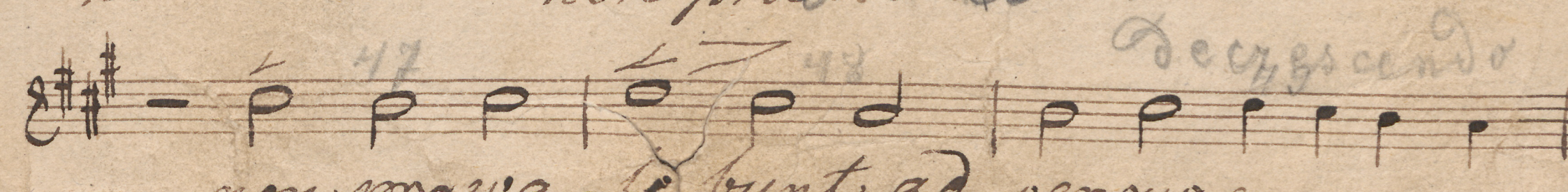
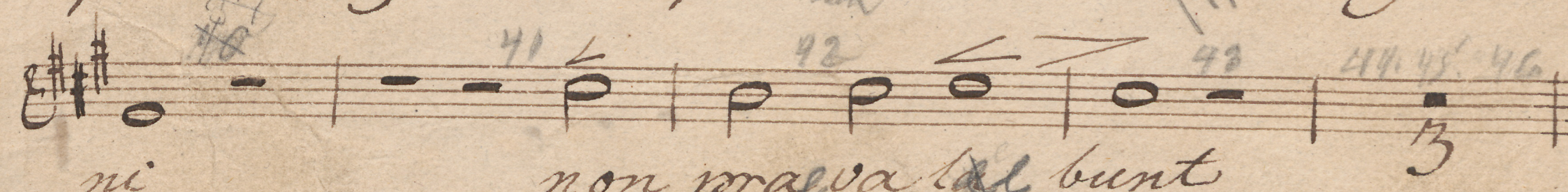
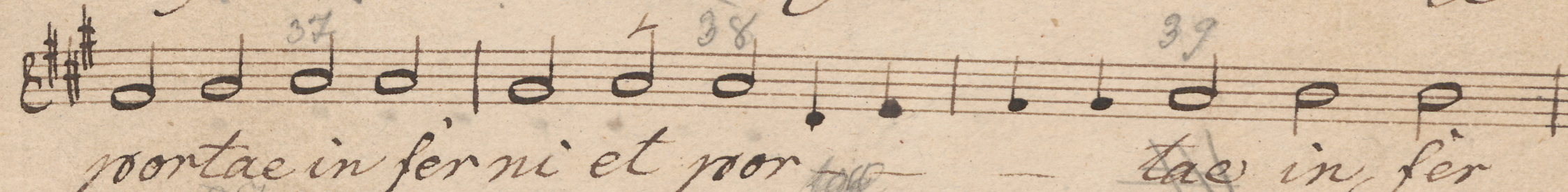
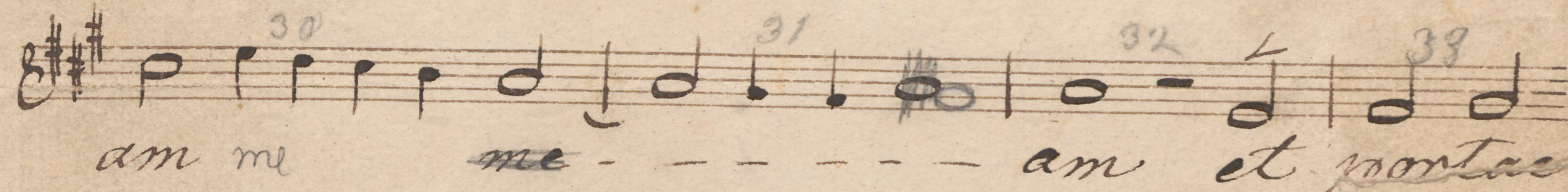
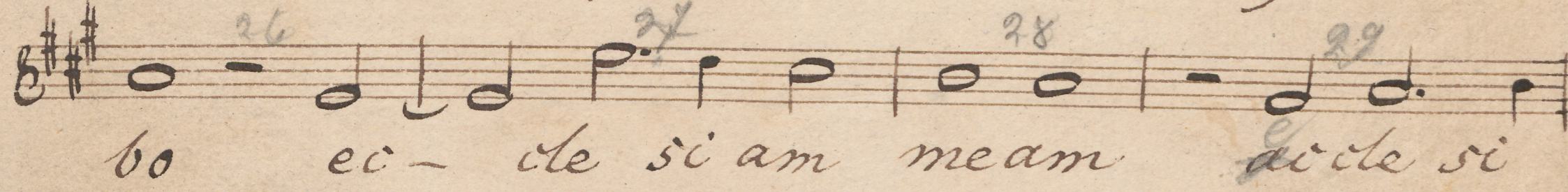
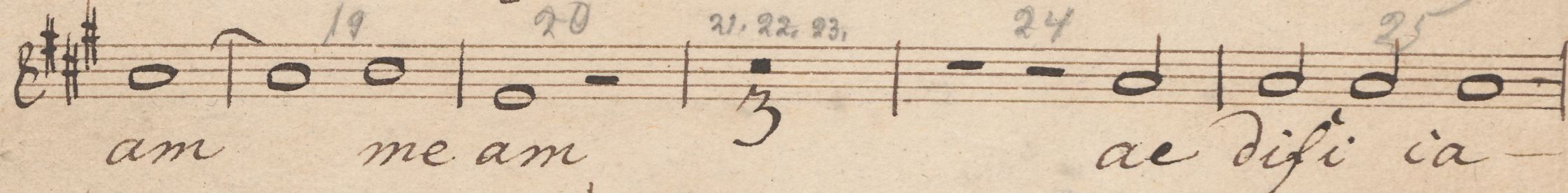
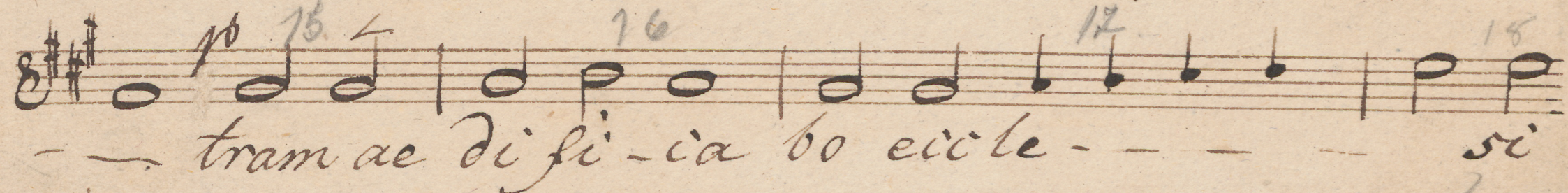
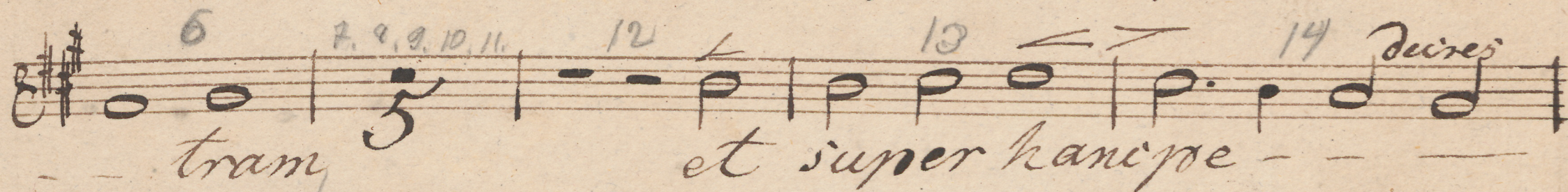
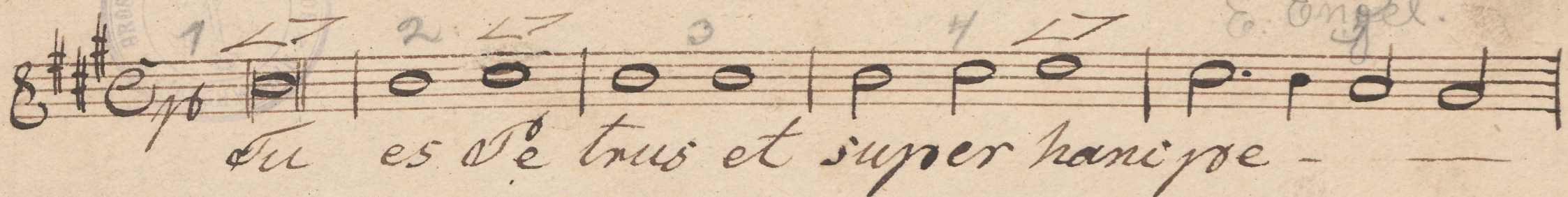
Partitur
9 Linn. I, 9 Linn. II
11 du
3 Linn. I, 1 Linn. II
8 Bap.

Motetto.

Soprano 1

Paestrina¹

E. Engel.



Handwritten musical score on ten staves, featuring a treble clef and a key signature of two sharps (F# and C#). The music is written in a cursive, handwritten style. The lyrics are written below the notes, and the tempo/mood is indicated by the word "piano" at the beginning and "dim" (diminuendo) later on. The score includes various musical notations such as notes, rests, and dynamic markings.

Lyrics: am et ti - bi Da - bo - cla - ves re - gni ioe lo - rum et ti - bi Da - bo et ti - bi Da - bo - cla ves re gni cla - ves re gni ioe lo - rum ioe lo - rum

Measure numbers are written above the notes: 50, 51, 52, 53, 54, 55, 56, 57, 58, 59, 60, 61, 62, 63, 64, 65, 66, 67, 68, 69, 70, 71, 72, 73, 74, 75, 76, 77, 78, 79, 80, 81, 82, 83, 84.

Dynamic markings: piano, dim.

Motetto.

Soprano. 2.

Salcestrina

3

W. Pietsch

1. 2. 3. 4.

5. 6. 7-11. 12. 13.

14. 15. 16-19. 20. 21.

22. 23. 24. 25. 26.

27. 28. 29.

30. 31. 32. 33. 34. 35.

36. 37. 38.

39. 40. 41. 42.

43. 44. 45.

46. 47. 48-50. 51. 52.

am 3 et ti bi da

Handwritten lyrics:
 Su es es Petrus et super hanc
 pe tram et super hanc
 pe tram ae di fi ca bo ei
 cle si am me am ae
 di fi ca bo ei cle si am me
 am et portae
 in fer ni in in fer ni et
 portae in fer ni non praeva le bunt
 ad versus e am ad versus e
 am et ti bi da

Handwritten musical score for a vocal part, likely a choir or soloist, in E major (three sharps). The score consists of six staves of music, with lyrics written below the notes. The lyrics are in Latin and German, and the music is in a simple, homophonic style.

Lyrics:

cla - ves re gni coe lo
rum et ti bi da
bo et ti bi
da bo cla ves re gni coe lo
rum cla - ves re gni coe lo
rum cla ves re gni coe lo
rum coe lo - - - rum

Measure numbers 53 through 84 are indicated above the notes. The score ends with a double bar line at measure 84.

Notello.

Atto

Palestrina

Su - es es Pe. trus et super hani
 pe pe - - - tram 5 et super hani
 pe - - - - - tram ae-di-fi-ca-
 bo ec-cle - - - si-am me-am ae -
 - di-fi-ca-bo ec-cle - - si am me -
 am ae-di-fi-ca - bo - - ei
 cle si am me - - am et por -
 - - - - - - - - - - - - - - -
 - - - - - - - - - - - - - - -
 in fer ni non prae va le bunt ad
 versus e - am ad versus e - - - - -

am non praevalent ad versus e — — —
 am et tibi da — — — bo et tibi
 da bo cla ves ves regni coe — — — lo
 rum et tibi da — bo cla ves et ti
 bi da bo et ti — bi da — bo et
 tibi da — bo cla ves re —
 gni coe lo — — — num cla — ves re —
 gni coe lo — — — num cla ves regni cla
 ves — regni coe lo — — — rum

Notetto.

Tenore 1.

Palestrina

7

goc -- tram Tu es Petrus et
super hanc poc -- tram ae
di fi - cia bo ei cle -- si am
me -- am ae di fi - cia bo ei -
cle -- si am me -- am ae
di fi - cia bo ei cle -- si am ei -
cle si - am me - am et portae
in fer - ni et por - tae in fer -
ni et por - tae in fer - ni
non praeva le - bunt ad

Decrescendo p.

versus e — — — — — am non prae valebunt ad

Decrescendo p.

versus e — — — — — am et tibi da —

bo et ti — — bi da — bo 3 claves

regni coe lo — — — — — rum

1 et tibi da — — — — — bo

1 et ti — bi da bo claves regni coe

lo — — — rum 3 cla ves — reg

ni' coe lo — — — — — rum coe — — lo

rum

Notetto.

Tenore. 2.

Palestrina

9

5 6

poe - - - tram Tu

es De trus et super hanc poe - - -

tram et super hanc poe - tram

ae di fi - cia bo ei cle - - -

si am me am ae di fi - cia bo ei -

cle - si am me - - - am et por

tae in fer ni et por - tae

in fer ni non praeva le bunt

ad oer sus e - am ad ver - sus

e - - - am et ti -

Donnante



bi da bo et tibi da
 bo 2 claves regni coe lo
 rum 2 et ti - bi da
 bo et tibi da - bo et ti - bi da
 bo claves regni coe lo rum cla
 ves regni coe lo *dimin*
 rum claves regni coe lo rum coe
 lo rum

Motetto.

Basso.

Palestrina. ^M

Handwritten musical score for Bass, featuring mensural notation and Latin lyrics. The score includes various musical markings such as *decresc.*, *crescendo*, *f*, *mf*, and *p*, along with measure numbers 1 through 54.

Lyrics: pe - tram Tu es Se - trus et super hanc - pe - tram aedifi - ca bo ec - cle - si - am me - am aedifi - ca bo ec - cle - si - am me - am et por - tae in fer - ni et por - tae in fer - ni non prae va - le - bunt non prae va - le - bunt ad ver - sus e - am et ti - bi

55. 56-58. 59. 60. 61.

dabo 3 claves regni coe lo

62. cresc. 63. 64. 65-67 68.

rum 3 et ti

69. 70. 71. 72. 73.

bi da bo 1 clavis re

74. 75. 76-78.

gni coe lo *crescendo* rum 3

79. 80. 81. 82. 83.

fr 3 claves regni coe lo rum coe lo

84. 85.

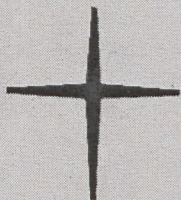
rum

MU 093 VI-21

G. P. da Palestrina: Tu es Petrus



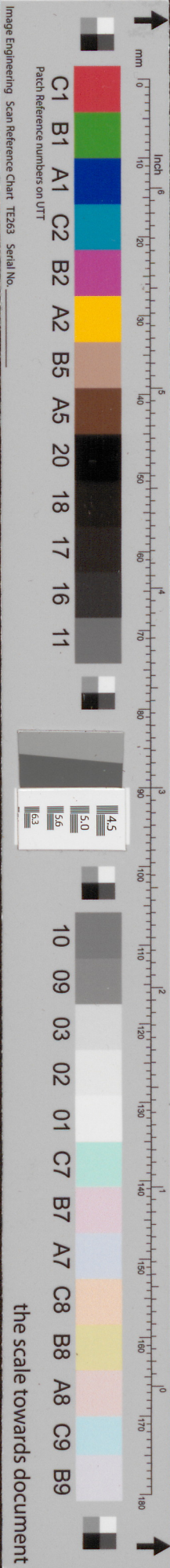
Schloßkirchen-
Gemeinde



**Ev.-Luth. Schloßkirchengemeinde
Schwerin**

Evangelisch-Lutherischer
Kirchenkreis Mecklenburg

Depositum in der Bibliothek des
Landeskirchenamts Schwerin
<https://nordkirche.bibliotheca-open.de/>



the scale towards document



Schloßkirchen-
gemeinde
Schwerin

http://purl.uni-rostock.de/rostdok/ppn1774471051/phys_0014

Mecklenburg
Vorpommern

