

Sanctus : Schloßkirchengemeinde Schwerin, MU 093 VI-26

<http://purl.uni-rostock.de/rosdok/ppn1774479974>

Musikhandschrift Freier  Zugang





"Sanctus" aus der Missa:

Papae Marcelli

von

Pier. Palestrina.

Partitur Nr. 93 No. 10

281

Handwritten notes and a large bracket on the left side of the page.

Aglo. B. for.

511

Sanctus.

Talestrina.

Heilig.

1. 2. 3. H.

Soprano
San - - - - - ctus, san -
cti - - - - - lig, fui -

Alto
San - - - - - ctus,
cti - - - - - lig, fui -
sani -

Tenor I
San - - - - -
cti - - - - -

Tenor II
San - - - - - ctus, San -
cti - - - - - lig, fui -

Bass I
San - - - - -
cti - - - - -

Bass II
San - - - - - ctus, san -
cti - - - - - lig, fui -

5. 6. 7. 8.

Jesus, san
liy, fai

Jesus, san
liy, fai

Jesus, san
liy, fai

Jesus, san
liy, fai

9v

10v

11

12.

Christus, san-ctus, qui

san-ctus, qui

san-ctus, qui

13. 14. 15.

ctus,
liq,

liq, sui

ctus,
liq,

ctus, san-ctus, san-ctus,
liq, sui - liq, sui

16.

17.

18.

19.

Do-mi-nus De-us Sa-
 iff der Herr, der Herr - zu -

epus, Do-minus Deus Sa-
 lig, sui - lig iff der Herr zu -

epus, _____ Do-minus De-
 lig _____ iff - der Herr, der

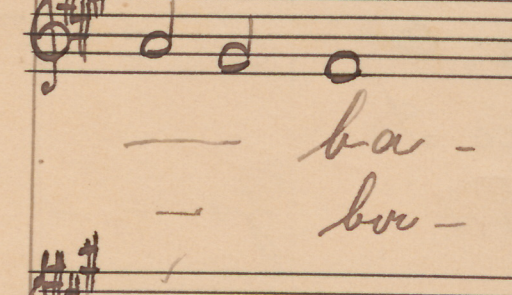
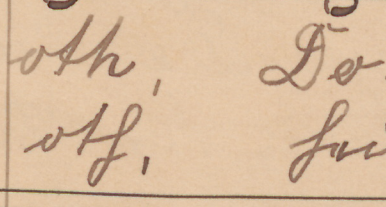
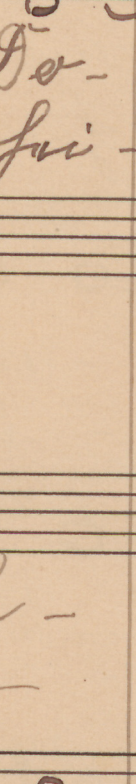
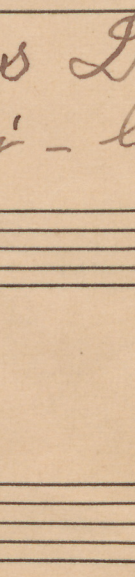
epus Do-mi-nus De- - - us
 lig, sui - lig, sui lig iff - der Herr,

Do-mi-nus De-us Sa-
 iff der Herr, der Herr, der Herr zu -

epus,

lig

Empty musical staves at the bottom of the page.

20.	21.	22.
		
<p>ba - oth,</p> <p>bo - oth,</p>	<p>Do -</p> <p>fui -</p>	<p>- minus</p> <p>- lig ist</p>
		
<p>- ba - oth,</p> <p>- bo - oth,</p>	<p>Do -</p> <p>fui -</p>	<p>-</p> <p>-</p>
		
<p>- us Sa - ba - oth,</p> <p>- zur - zu - bo - oth,</p>	<p>Do - mi - nus De -</p> <p>fui - lig, fui - lig</p>	<p>-</p> <p>-</p>
		
<p>ba - oth,</p> <p>bo - oth,</p>	<p>Do -</p> <p>fui -</p>	<p>-</p> <p>-</p>
		
<p>ba - oth,</p> <p>bo - oth,</p>	<p>Do - mi - nus De -</p> <p>fui - lig, fui - lig</p>	<p>-</p> <p>-</p>

23.

24.

25.

		
De - - - us Sa - - - ba -	us Sa - - - ba -	- - - ba -
vat - - - Gort zu - - - ba -	zu - - - ba -	ba -
		
- minus	De - us	Sa - - -
- lig ist	vat Gort	zu - - -
		
		Go - mi -
		fui - lig
		
us Sa - - - ba - oth,	- - - ba - oth,	-
ist vat Gort - zu - ba - oth,	zu - ba - oth,	
		
- minus	De - us	Sa - ba -
- lig ist.	vat Gort	zu - ba -
		
- - - us Sa - - -	- - - us Sa - - -	- - -
- - - ist vat Gort zu -	ist vat Gort zu -	

Empty musical staves at the bottom of the page.

Handwritten musical score with three systems of music and German lyrics. The score is divided into three measures labeled 26, 27, and 28.

Measure 26:
 oth, Do- minus
 off, sui- lig ist

Measure 27:
 ba- oth, Do-
 bo- off, sui-
 nus De-
 sui- lig ist

Measure 28:
 us Sa-
 in- ter-
 ba- oth, Do- mi-
 bo- off, sui- lig
 nus De-
 sui- lig ist in-
 ter-
 ba- oth, Do- mi-
 bo- off, sui- lig

The score includes treble clefs, a key signature of one sharp (F#), and various musical notations such as whole notes, half notes, and rests. The lyrics are written in a cursive hand below the notes.

29.

30.

31.

Handwritten musical score with lyrics in German. The score is organized into three measures corresponding to the numbers 29, 30, and 31. Each measure contains a vocal line and a piano accompaniment line. The lyrics are:

29. us Sa - ba -
zu - bor -

30. minus Deus Sa - ba -
liy ist der Herr zu - bor -

31. ba - oth, Sa - ba -
bor - oth, der Herr - zu bor -

De - us Sa - ba -
liy ist der Herr zu - bor -

us Sa - ba - oth,
Herr zu - bor - oth,

nus De - us Sa - ba -
ist der Herr zu - bor -

32. 33. 34.

oth.
off.

ple -
ol -

oth.
off.

ple - ni sunt éve - li et -
ol - la Lou - du, ol - la

oth.
off.

pleni sunt éve - li et
ol - la Lou du, ol -

oth.
off.

ple ni sunt éve - - li et
ol - la Lou - du, ol la

ple - ni sunt éve - li et ter -
ol - la Lou - du - ol -

oth.
off.

35

36

37

ni sunt cœ - - - li, cœ - - -
 - lu Lou - - - da p̄i - - - us

ser - - - ra, pleni sunt cœ - li et
 Lou - da, ul lu Lou da, ul - la

ser - - - ra, - - -
 - - - lu Lou - - - da

ser - ra ple - ni sunt cœ -
 Lou - da, ul - la Lou -

ra
 - - - lu Lou - da,

pleni sunt cœ - li et
 ul - la Lou - da -

38.	39.	40.
li et fer - ra, ple - ni sunt coe -	oll, ul - la Lou -	
ser - - ra,	et fer	
Lou - ra,	ul - la	Lou -
pleni sunt coe - li et		
ul - la Lou - ra, ul -		
li et fer - ra, ple -		
ra, ul - la Lou - ra, ul -		
	pleni sunt coe -	
	ul - la Lou -	
ser - - - - ra, pleni sunt		
ul - - - - la Lou - ra, ul - la		

Empty musical staves at the bottom of the page.

H1.

H2.

H3.

li et ter - - - ra,
 sta, ul - lu - - - Lou - sta,

- - - ra,
 sta
 glo - ri -
 find sui -

ter - ra et ter - - ra glo - ri -
 - - lu Lou - sta find sui -

ni sunt eve - li et ter - ra,
 - lu Lou - - - sta,

li et ter - - - ra,
 sta, - ul - - - lu Lou sta,

eve - li et ter - ra glo - ri -
 Lou - - - sta, ul - lu

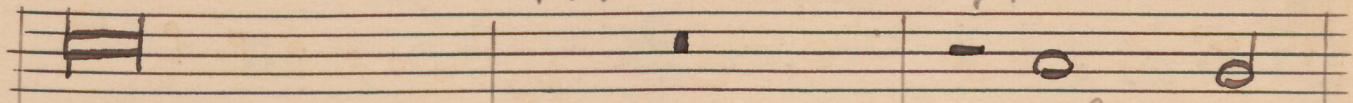
44. 45. 46.

glo-ri-a tu-or-lu-Lou-da sind pin-ge-ru-a
 glo-ri-a tu-or-lu-Lou-da sind pin-ge-ru-a
 glo-ri-a tu-or-lu-Lou-da sind pin-ge-ru-a
 glo-ri-a tu-or-lu-Lou-da sind pin-ge-ru-a
 glo-ri-a tu-or-lu-Lou-da sind pin-ge-ru-a
 glo-ri-a tu-or-lu-Lou-da sind pin-ge-ru-a

47

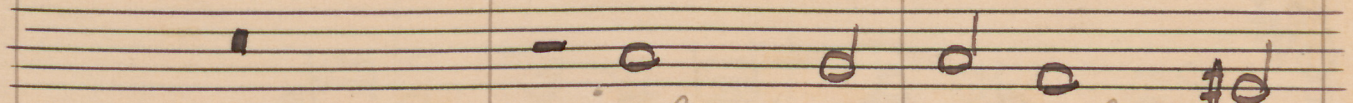
48

49

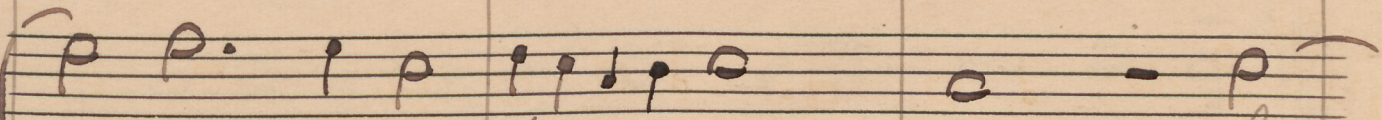


a,
voll,

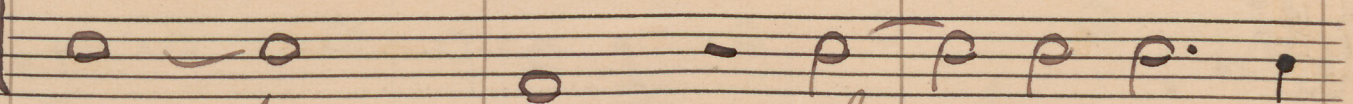
glo-ri-
al-la



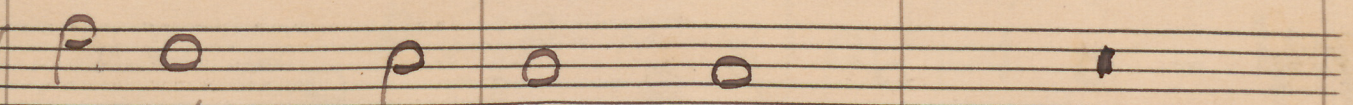
glo-ri-a, glo-ri-
al-la Lou - -



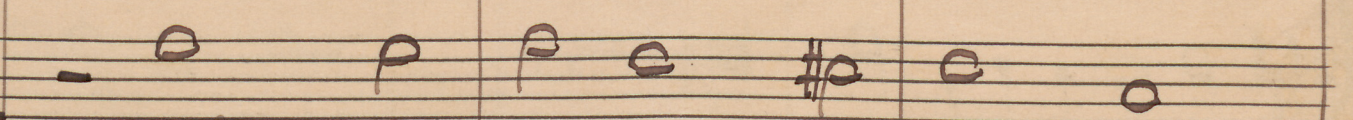
- - ri-a su - - a, glo-
- la - - Lou - - tu, al-



a su - a, glo-ri-a
Lou - - tu, al-la Lou -



a su - - a,
la Lou - - tu



glo-ri-a, glo-ri-a su -
al-la Lou - - tu fin

50. 51. 52.

a ————— — fu — — — a ,
 Lou — — — va, ul — la Lou — va

a fu — a — — —
 va ul — la Lou — — —

ri — a fu — — a , glo — ri — a fu —
 — la Lou — — va, ul — la Lou —

va, ul — la Lou — — va, ul — la
 fu —

glo — ri — a fu — — a ,
 ul — la Lou — — — va ,

— — — a , glo —
 fu — ut ff — — voll , — sind

Empty musical staves for accompaniment.

53.

54.

55.

glo - ri - a tee - - - - -
find - - - - -

glo - ri - a tee - - - - - a
da find - - - - - voll,

a, glo - - - - - ri - a tee - - - - -
da find - - - - -

a, glo - ri - a - - - - -
Lou - da find - - - - -

glo - ri - a - - - - -
ol - - - - - Lou - - - - -

- ri - a - - - - - a, glo - - - - -
- find - - - - - voll, find

56. 57. 58. 59.

a
p^{oll}.

glo-ri-a su - - - a.
fiud - - sui - - ut ff - - va p^{oll}.

a.
va p^{oll}.

su - - a, glo-ri-a su - - a.
ff va p^{oll}, - - fiud sui - - ut ff - - va p^{oll}.

a, glo-ri-a - - - su - - a.
va fiud - - sui - - ut ff - - va p^{oll}.

ri-a - - - glori-a - - su - - a.
sui - - ut ff - - - va p^{oll}.

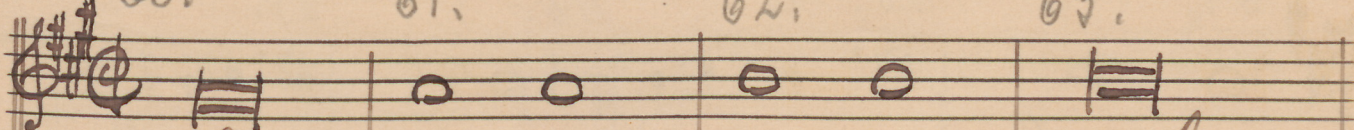
Empty musical staves.

60.

61.

62.

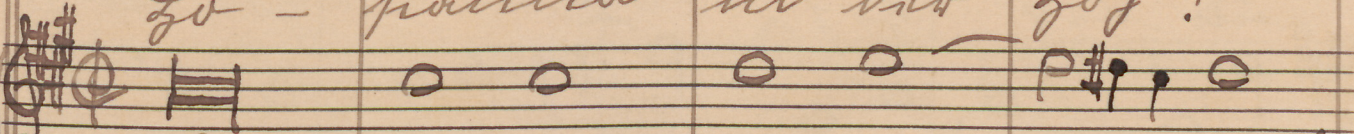
63.



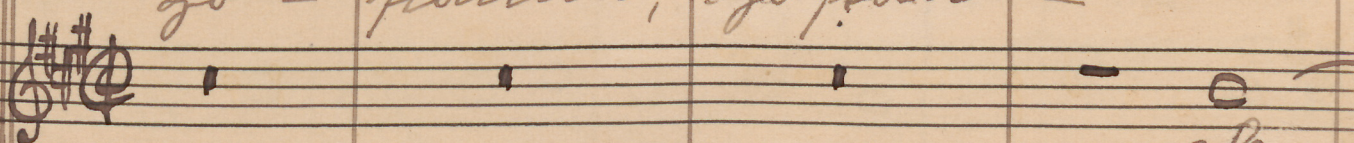
Ho - sanna in ex - cel -
so - panna in ter - töl!



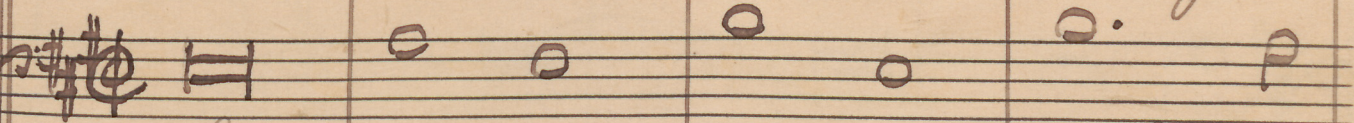
Ho - sanna in ex - cel -
so - panna in ter - töl!



Ho - sanna in ex - cel -
so - panna, so panna - - -



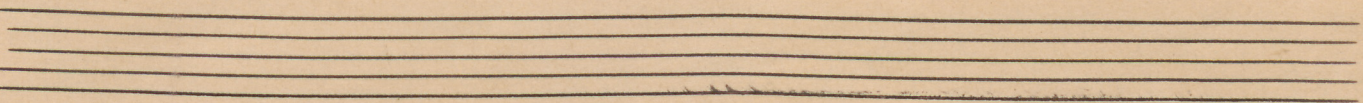
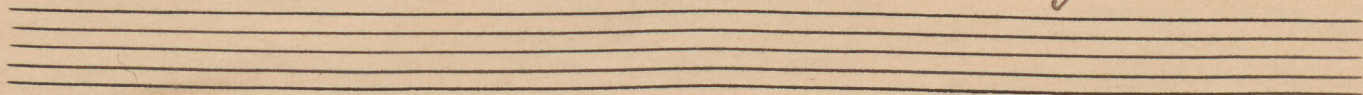
Ho -
so -



Ho - sanna in ex - cel -
so - panna in ter - töl!



Ho -
so -



64. 65. 66. 67.

sis! Ho-san - na in excēl -
 - Ho - siu - - - - - na in

sis! Ho-san - na in excē-
 in dnt Hōf! - - - - - Ho siu

sis! Ho-san - na in excēl - sis, in -
 na in dnt - Hōf! Ho - siu - na in dnt

- san - na in excēl -
 - siu - na in dnt Hōf! Ho -

- Ho - siu - - - - - na

sanna in excēl - sis! -
 siu - na in dnt - Hōf!



68.

69.

70.

71.

Handwritten musical score with four systems of staves. The lyrics are written below the notes in a cursive hand.

System 1:
 — — — — sis! Ho — san — na in
 — — — — der Höf! Ho — — fiou — nor —

System 2:
 cel — sis! Ho — san — na — in ese —
 — nor, Ho fiou — nor, — Ho —

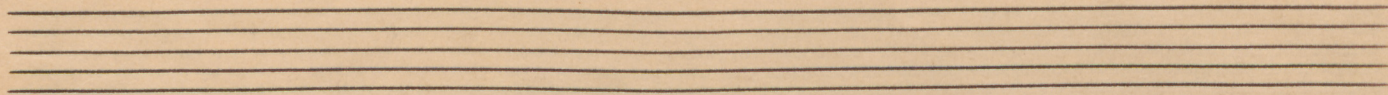
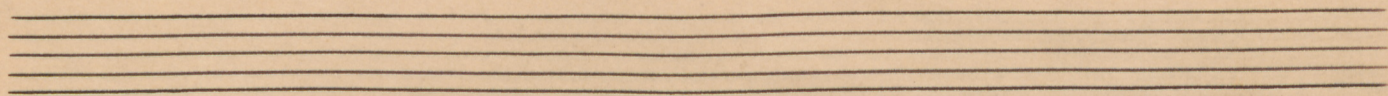
System 3:
 ese cel — sis! Ho — san na in ese cel —
 Höf! — — Ho — fiou nor, Ho — — fiou —

System 4:
 — — — — sis! Ho — san na — in ese —
 fiou — — nor, Ho — — fiou nor, — Ho — —

System 5:
 sis!
 in Ho — san na in ese —
 — — — — der Höf! Ho — fiou — nor

System 6:
 Ho — san — na in ese — cel —
 Ho — — fiou — nor in der Höf!

72.	73.	74.
ese - cel - sis!		Ho - - -
in - - -	Löf!	Lo - - -
cel - - - sis!	Ho - san - - - na	
fiou - - - ur, Lo fiou - - - ur		
- - - sis!	Ho -	
- ur, - Lo - - - fiou - ur - in		
cel - sis!	Ho - - - san	
fiou - ur,	Lo - - - fiou -	
cel - - - sis!	Ho -	
in - - - Löf!	Lo - fiou -	
- - - sis!		



75. 76. 77.

san-na, Ho - - - san-na
 fiou-ur, Ho - - - fiou-ur,
 in ese - cel - - -
 in der Höf! - - -
 - sanna - in ese - cel - - -
 - der Höf! - Ho - - - fiou - - -
 - na in - - - ese - cel - - -
 - ur, Ho - fiou - - - ur in
 sanna in ese - cel - sis,
 ur in der Höf! Ho - fiou -
 Ho - - - san-na
 Ho - - - fiou - - -

78. 79. 80.

in ex - - - cel - sis.
 lo - si - on - no - in - tu - glo - ri - a!

sis.

no - in - - - glo - ri - a!

- ex - cel - - - sis.
 - in - tu - glo - ri - a!

in ex - cel - sis.
 no in tu glo ri a!

in ex - cel - sis.
 no in tu glo ri a!

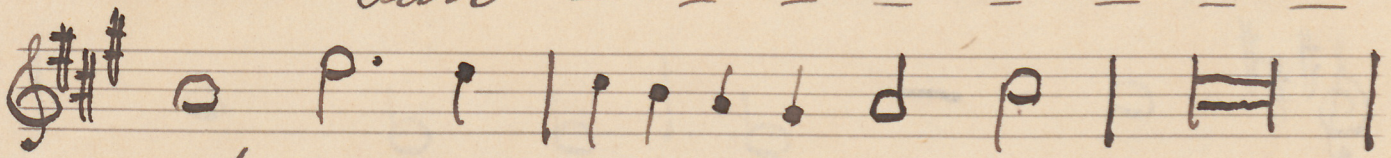
Empty musical staves.

Soprano.

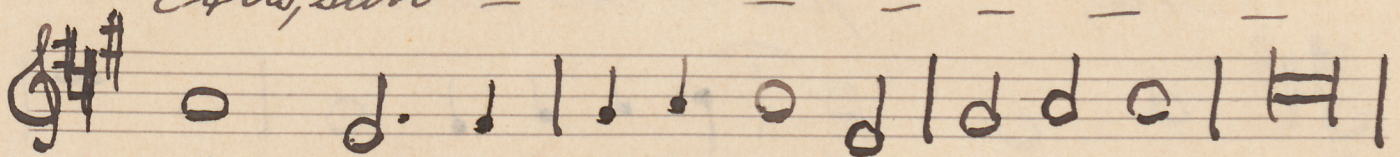
Sanctus. *Falsetto.*



San - - - - -



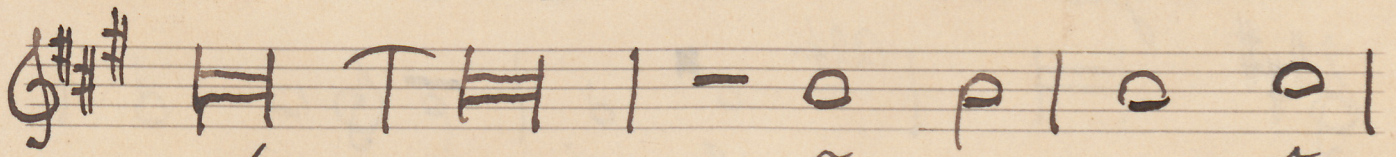
ctus, san - - - - -



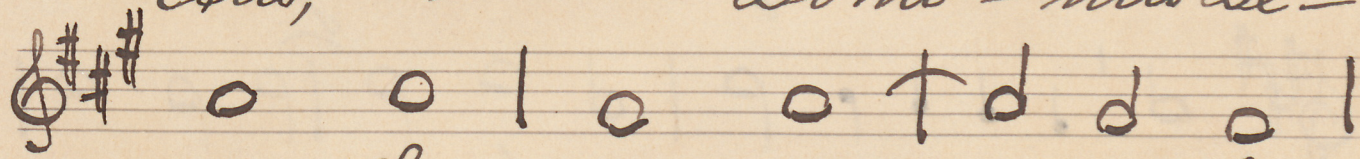
ctus, san - - - - -



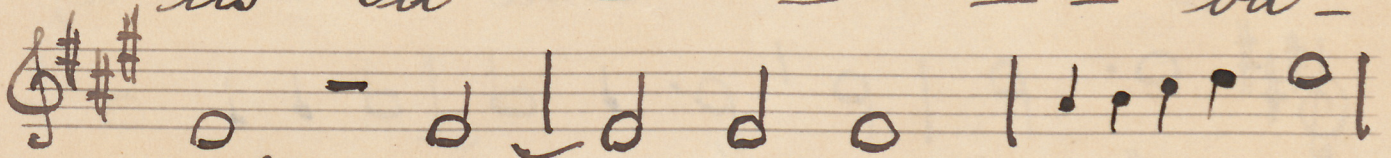
- - - - -



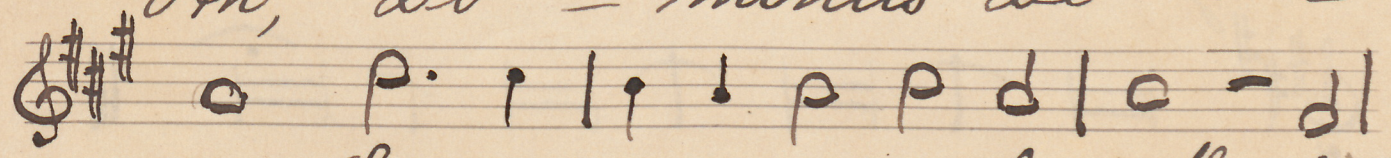
ctus, — Domi - nus De -



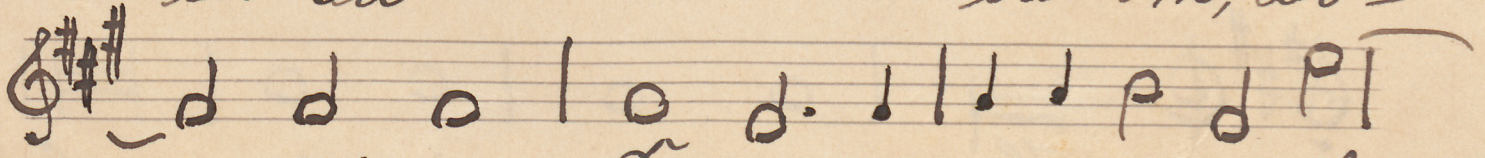
us Sa - - - - - ba -



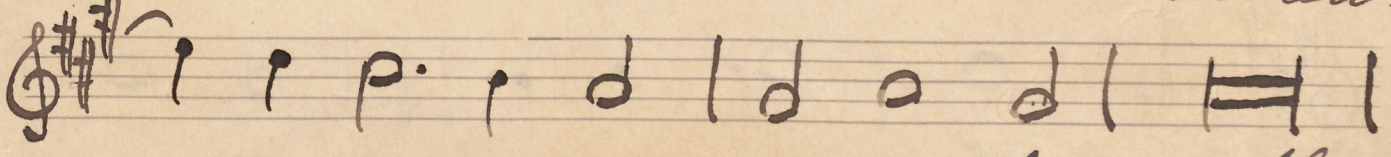
oh, Do - minus De - - -



us Sa - - - - - ba - oh, Do -



- minus De - - - - - us Sa -



- - - - - ba - oh

alt.

pleni sunt coe - li et pleni sunt coe -
 - - - li, coe - - - - li et ter -
 ra, ple - ni sunt coe -
 li et ter - - - - ra,
 glo - ri - a tu - - - -
 a, *alt.* glo - ri - a glo - ri -
 a - - - - tu - - - - a,
 glo - ri - a tu - - - -
 a

H T H T H T H

Glo - san na in ex - cel -
 sis! Ho - san - - - - na

Handwritten musical notation on a single staff in G major (one sharp) and 3/4 time. It begins with a treble clef, a key signature of one sharp (F#), and a common time signature (C). The melody consists of quarter notes: G4, A4, B4, C5, B4, A4, G4. A slur covers the notes from G4 to C5. The lyrics below the staff are "in ex-cel - - - - -".

Handwritten musical notation on a single staff in G major. It begins with a treble clef, a key signature of one sharp (F#), and a common time signature (C). The melody consists of half notes: G4, A4, B4, C5, B4, A4. The lyrics below the staff are "sis! Ho - san-na in".

Handwritten musical notation on a single staff in G major. It begins with a treble clef, a key signature of one sharp (F#), and a common time signature (C). The melody consists of half notes: G4, A4, B4, C5, B4, A4. The lyrics below the staff are "ex-cel - sis! Ho -".

Handwritten musical notation on a single staff in G major. It begins with a treble clef, a key signature of one sharp (F#), and a common time signature (C). The melody consists of half notes: G4, A4, B4, C5, B4, A4. The lyrics below the staff are "san-na, Ho - san-na".

Handwritten musical notation on a single staff in G major. It begins with a treble clef, a key signature of one sharp (F#), and a common time signature (C). The melody consists of quarter notes: G4, A4, B4, C5, B4, A4, G4. A slur covers the notes from G4 to C5. The lyrics below the staff are "in ex - - - - - cel - sis!".

H. H. G.

Four sets of empty musical staves, each consisting of five horizontal lines, arranged vertically on the page.

Handwritten musical notation on ten staves. The notation is extremely faint and illegible, appearing as light blue or greyish lines and shapes on the aged paper.

Alf.

Sanctus.

Talestrina.

1 2 3 4
San - ctus san -

5 6 7
ctus, san -

8 9 10 11
ctus, san -

12 13 14
ctus, san -

15 16 17
ctus Do - minus

18 19 20 21
De - us Sa - ba - oth,

22 23 24
Do - minus De - us

25 26 27
Sa - ba -

28 29 30
oth, Do - minus De - us Sa -

31 32 33
ba - oth, ple - ni sunt coe -

Handwritten musical score in G major (one sharp) and 4/4 time. The lyrics are Latin: "li et terra, pleni sunt coeli et terra, et terra, gloria tua, gloria tua, gloria tua, gloria tua. Hosanna in excelsis! Hosanna in excelsis! Hosanna".

Measures 34-35: li et — ter — ra, pleni sunt

Measures 36-39: coe — li et ter — ra, et ter —

Measures 40-42: ra,

Measures 43-45: glo — ri — a tu — a,

Measures 46-48: glo — ri —

Measures 49-52: a, glo — ri — a tu — a

Measures 53-55: glo — ri — a tu — a

Measures 56-59: glo — ri — a tu — a.

Measures 60-63: Ho — san — na in excel —

Measures 64-67: sis! Ho — san — na in excel —

Measures 68-70: cel — sis! Ho — san — na —

Handwritten musical score in G major (one sharp) and 4/4 time. The score consists of four staves. The lyrics are written below the notes.

Staff 1: *in* *est* - *cel* - *sis!* *Ho* - *san* -

Staff 2: - - - *na* *in* *est* -

Staff 3: *cel* - - - *sis!*

Staff 4: (Piano accompaniment)

Measure numbers 71 through 80 are written above the notes.



Tenor I

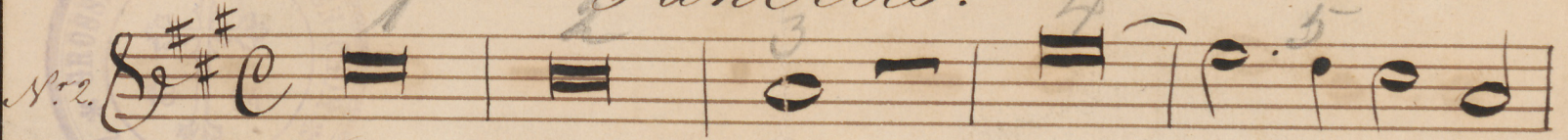
Sanctus. Palestrina.
Heilig.

ter - ra et ter - ra glo - ri -
 - lu - lus - tu - sius -
 a tu - a, glo -
 - ri - a tu - a, glo -
 - lu - lus - tu - sius -
 ri - a tu - a, glo - ri - a tu - a, glo -
 - lu - lus - tu - sius, - lu - lus - tu - sius
 - ri - a tu - a
 si - us - tu - sius - tu - sius -
 sis! Glo - ri - a in - excelsis
 - tu - sius - tu - sius - tu - sius -
 sis, in excelsis! Ho - sanna
 - tu - sius - tu - sius - tu - sius -
 in excelsis
 Ho - sanna in excelsis!
 sis! Ho - sanna in excelsis!
 sis!
 sis!

Tenore II.

Sanctus.

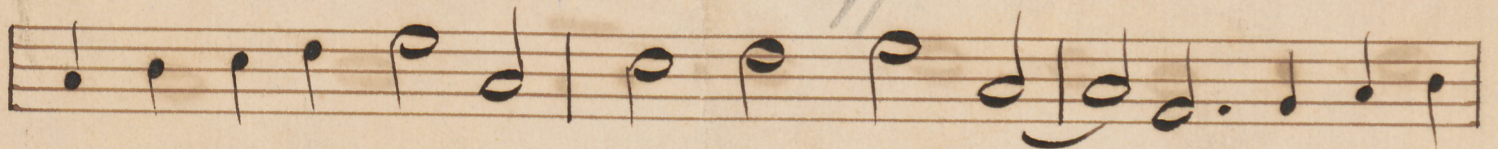
Palestrina.

Nr. 2. 

San ctus, san " " " "



ctus, san " " " " " "



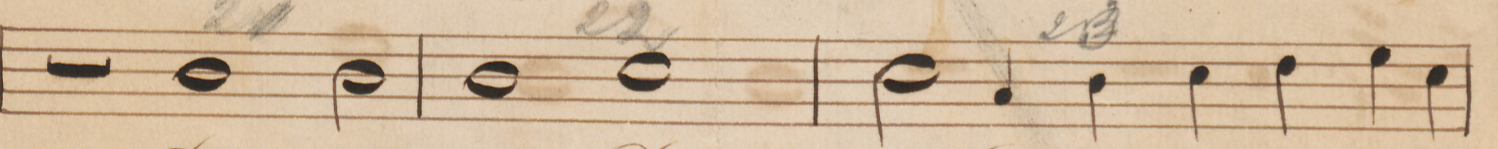
" " " " " " " "



" " " " " " " "



ctus Do mi nus De " " " us




Do mi nus De us Sa " " "



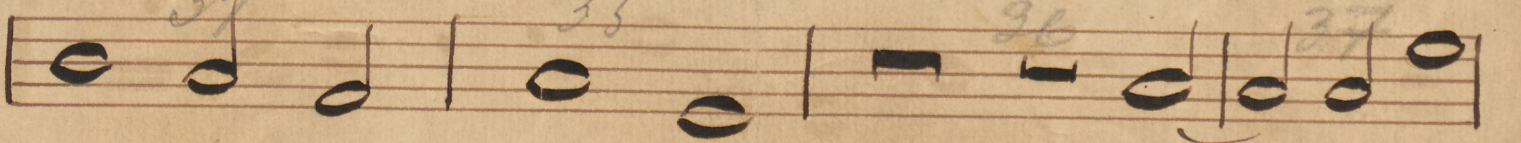
" " " ba oth, Do "



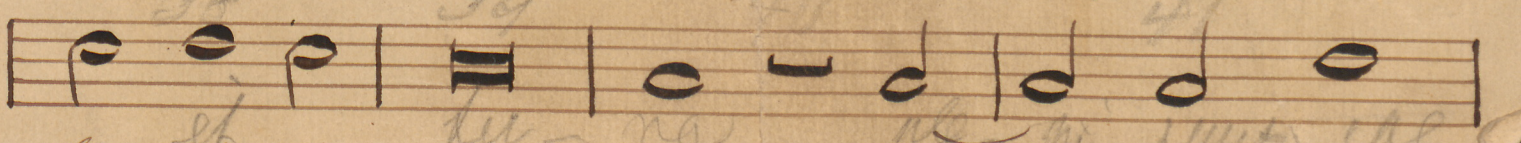
" mi nus De " us Sa " " "



" " ba oth, ple ni sunt coe " " "



" li et ter ra, ple ni sunt coe,



li et ter ra, ple ni sunt coe,

42 43 44 2.45 46 47

li et ter, na

48 49 50

a, glo, ri, a

51 52 53

a, glo, ri, a

54 55 56

a, glo, ri, a

57 58 59

a, glo, ri, a

60 61 62 63

Glo, ri, a

na in ex, cel, sis!

na in ex, cel, sis!

Glo, ri, a in ex, cel, sis!

Glo, ri, a in ex, cel, sis!

Glo, ri, a in ex, cel, sis!

Glo, ri, a in ex, cel, sis!

ex, cel, sis!

ex, cel, sis!

Handwritten musical score with lyrics in German. The lyrics are:

glo-ri-a tu-um - - a,
 al-lu-Lum - - tu,
 glo-ri-a tu-um - a, glori-
 al - - lu-Lum - tu - -
 a - - - - -
 qui - - - - -
 Glo-sanna in ex-cel-
 - - - - -
 sis
 Glo-sanna in ex-cel-
 - - - - -
 sis! Glo-sanna in ex-
 - - - - -
 cel-sis, in ex-cel-sis!
 Glo-sanna in tu-um - - a,
 al-lu-Lum - - tu,
 Glo-sanna in ex-cel-
 - - - - -
 sis!

Basso II.

Sarcus. Talestrina. ^{Heilmann} 37

Heilig.

San - - ctus, san - -
 cti - - liq, sui - -
 ctus, san - -
 cti - - liq, sui - -
 ctus, san - - ctus,
 cti - - liq, sui - -
 san - ctus, san - ctus,
 cti - liq, sui - liq,
 Do - mi - nus De - us Pa -
 ter, qui - sit
 ba - oth, Do - mi -
 nus De - us Pa - ba - oth,
 ter, qui - sit
 pleni sunt coe - li et
 ter - ra, pleni sunt
 coe - li et ter - ra glo - ri -
 a, a -
 ter, qui - sit

Handwritten musical score on aged paper with ten staves. The music is in G major (one sharp) and 3/4 time. The lyrics are in Latin and German. The score includes various musical notations such as notes, rests, bar lines, and dynamic markings like *ff* and *mf*. There are also some performance instructions like *mf* and *ff* written above the notes.

Lyrics (Latin/German):
 glo-ri-a, glo-ri-a se-
 cul-lu Lau - du sind
 - ri-a se-a, glo-
 - ri-a se-a, glo-
 ri-a, glo-ri-a se-a.
 Ho - san - na in ex -
 cel - sis! Ho - san -
 na in ex - cel - sis!
 Ho - san - na in ex -
 cel - sis!
 Ho - san - na in ex -
 cel - sis!
 Ho - san - na in ex -
 cel - sis!

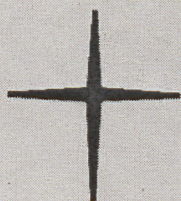


MU 093 VI-26

G. P. Palestrina, Sanctus aus der Missa
Papae Marcelli



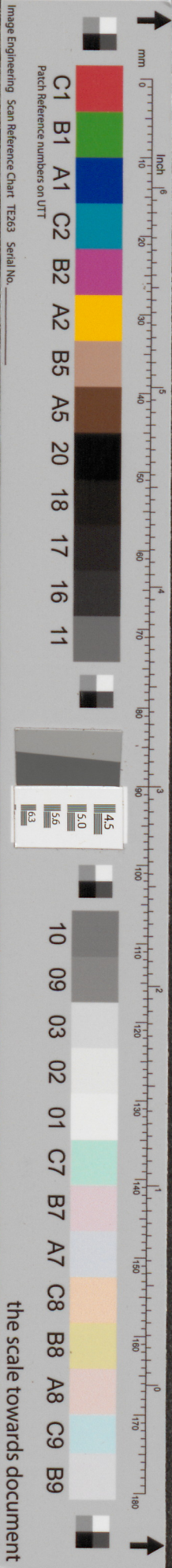
Schloßkirchen-
Gemeinde



**Ev.-Luth. Schloßkirchengemeinde
Schwerin**

Evangelisch-Lutherischer
Kirchenkreis Mecklenburg

Depositum in der Bibliothek des
Landeskirchenamts Schwerin
<https://nordkirche.bibliotheca-open.de/>



the scale towards document