

## **Improperia : Schloßkirchengemeinde Schwerin, MU 093 VIII-12**

<http://purl.uni-rostock.de/rosdok/ppn1774575604>

Musikhandschrift Freier  Zugang



Impropria

(Lautung)

Palestrina.

Partitur

3 Sopr. I, 4 Sopr. II

2 Alt. I, 3 Alt. II

3 Ten. I, 2 Ten. II

3 Bass. I, 2 Bass. II

Alloßdorf.

294



# Partitur.

Ad Missam dum fit adoratio Crucis canuntur  
Impropria.

J. A. Praenestini.

N<sup>o</sup> 1. Chor. I. Solo.

Sop: *Largo.*

Alt: *Largo.* *cresc.* *si*

Tenor: *Largo.* *cresc.* *si*

Bass: *Largo.* *si*

So - pu - le - me - us - qui - se - ci - si -

bi

bi

aus in quo con tri sta vi

V.S.

*cresc.*  
 te re spon - de mi hi.  
*cresc.*  
 te re spon - de mi hi.

*No. II. Chor II. Soli.*

Quia e dixi te de ter ra Ae gy -  
 Quia e dixi te de ter ra Ae gy -

Handwritten musical score for four voices (Soprano, Alto, Tenor, Bass). The text is "p̄ti: pa ra sti cru cem". The notation includes treble and bass clefs, a key signature of one flat, and various musical symbols such as notes, rests, and slurs. The word "p̄ti:" is written above the first two staves, and "pa ra sti cru cem" is written below the last two staves.

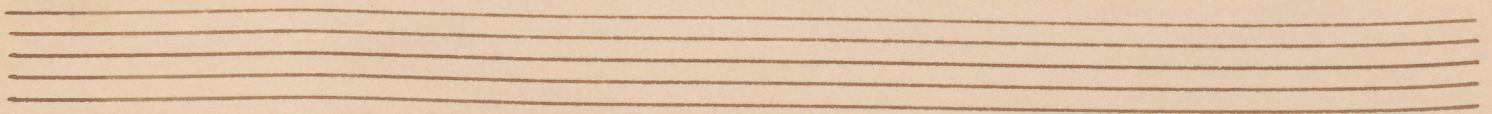
Handwritten musical score for four voices (Soprano, Alto, Tenor, Bass). The text is "Sal va so ri tu o.". The notation includes treble and bass clefs, a key signature of one flat, and various musical symbols such as notes, rests, and slurs. The word "Sal va so ri tu o." is written below the staves. At the bottom right, there is a signature "Nro III a. S.".

*N<sup>ro</sup> III<sup>a</sup> Chor I.  
Tutti.*

Handwritten musical score for Chor I, featuring four staves. The music is in a common time signature (C) and a key signature of one flat (B-flat). The lyrics are written below the notes: "A-gi os o she os". The first staff is a soprano line, the second is an alto line, the third is a tenor line, and the fourth is a bass line. The notes are mostly half notes and quarter notes, with some rests.

*N<sup>ro</sup> III<sup>b</sup> Chor II. Tutti  
aller Chorusrespondet.*

Handwritten musical score for Chor II, featuring four staves. The music is in a common time signature (C) and a key signature of one flat (B-flat). The lyrics are written below the notes: "San ctus De us". The first staff is a soprano line, the second is an alto line, the third is a tenor line, and the fourth is a bass line. The notes are mostly half notes and quarter notes, with some rests. The score ends with a double bar line.



*Nro III<sup>c</sup> Chor I. Tutti.*

A-gi-us Fi-li-us Pa-tris

A-gi-us Fi-li-us Pa-tris.

*Nro III<sup>d</sup> Chor II. Tutti.*

San-ctus Spi-ritus

San-ctus Spi-ritus

*Nro IV. v.s.*

*Parto II. adue Cori.*  
*Chor I.*

*Chor I.*

A gi os a lha na ros e

*Chor II.*

*Chor II.*

A gi os a lha na ros e





Handwritten musical score for a choir or organ. The score consists of seven staves. The first two staves have the lyrics "le i son - i mas". The third and fourth staves also have "le i son i mas". The fifth staff has "Soli" written below it. The sixth and seventh staves have the lyrics "San-ctus im mor-ta". The music is written in a style typical of 18th or 19th-century manuscripts, with notes, rests, and bar lines.

*(Handwritten signature)*

A handwritten musical score for a choir, consisting of eight staves. The music is written in a single system with a brace on the left. The lyrics are written below the notes. The lyrics are: "mi se re re no bis" on the first staff, "mi se re re no bis" on the second staff, "lis mi se re re no bis" on the third staff, and "lis mi se re re no bis" on the fourth staff. The notes are mostly quarter and eighth notes, with some rests. There are some markings above the notes, possibly indicating dynamics or articulation. The paper is aged and yellowed.

No V. Chor I. Tutti.



Qui a e duxi te De ter

Qui a e duxi te De ter

ra Ae - gij - psi:

ra Ae - gij - psi

ra Ae - gij - psi:

*U.S.*

pa - ra sti i ru cem Sal va

pa ra sti i ru cem Sal va

So - ri tu - a.

So - ri tu - a.

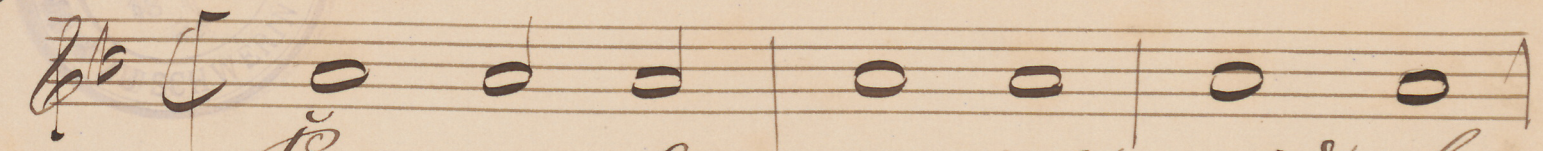
So - ri tu - a.

So - ri tu - a.

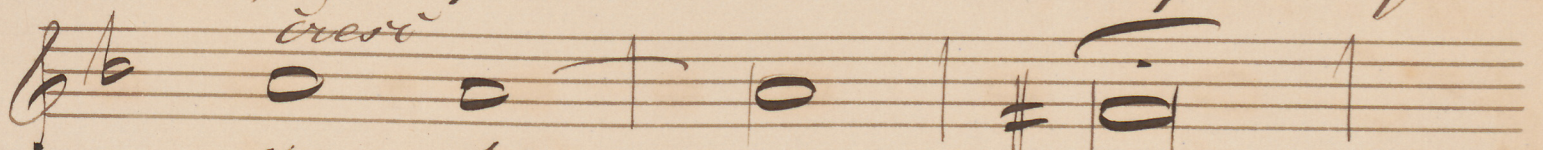
J. C. No. I. ad sine No. II.

N<sup>ro</sup> I Largo. Sopran Chor I. P. A. Praeneflini.

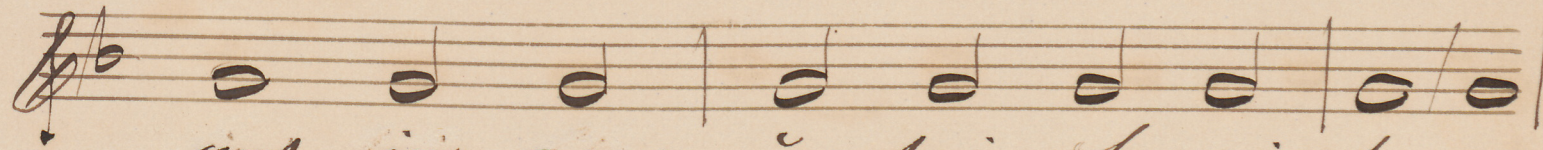
Chor I



So - pu - le - me - us - quid fe -



ci - si - bi

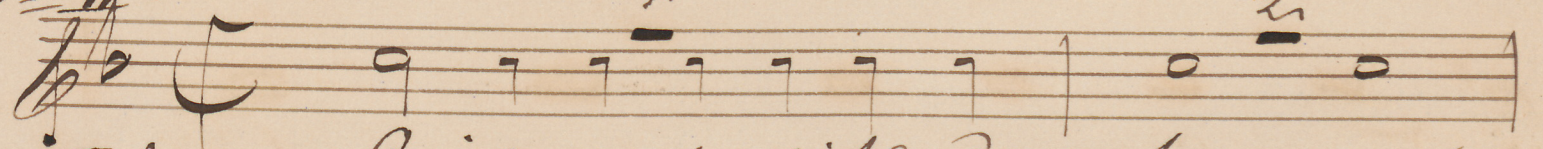


ant in quo non sui stavi de re



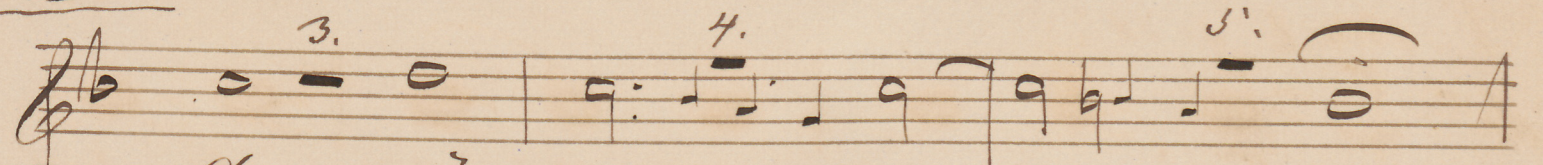
spon - de mi - hi.

N<sup>ro</sup> II

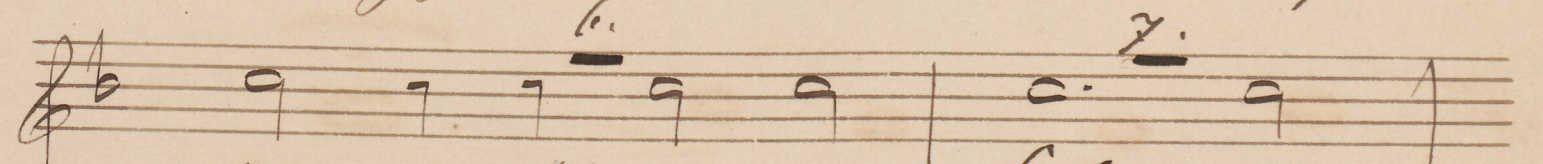


Quia e - du - xit e - de - ter - ra

Chor II Solo



de - gy - phi :

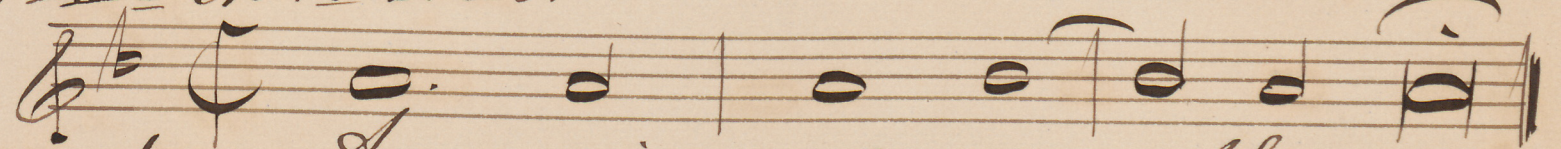


pa - ra - sti - cru - cem sal - va -



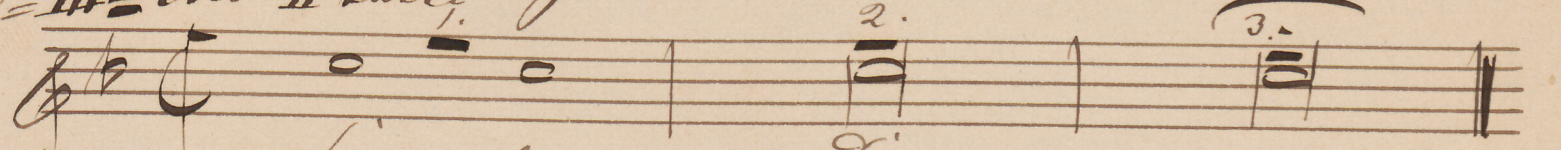
lo - ri su - o.

N<sup>ro</sup> III<sup>a</sup> Chor I tutti:



gi - os - o - the - os.

N<sup>ro</sup> III<sup>b</sup> Chor II tutti:



San - ctus De - us.

N<sup>ro</sup> III<sup>c</sup> Chor I tutti



A - gi - os - So - chy - ro.

M.

# Soprano Chor I.

N<sup>ro</sup> III a

Chor II tutti

1. *p* San - ctus *f* for - sis.

2. *f*

3.

N<sup>ro</sup> IV. a due voci.

Chor I. A gi os a tha na los e

Chor II voci.

le i - son - i mas san - ctus

Chor I tutti

2. in - mor - ta

3. lis - mi -

4. cresc. se re re no - bis.

fine

N<sup>ro</sup> V. Chor I tutti

Qui a e du xi te de ter

ra Ae gy - psi:

pa ra fti - um - cem Sal va

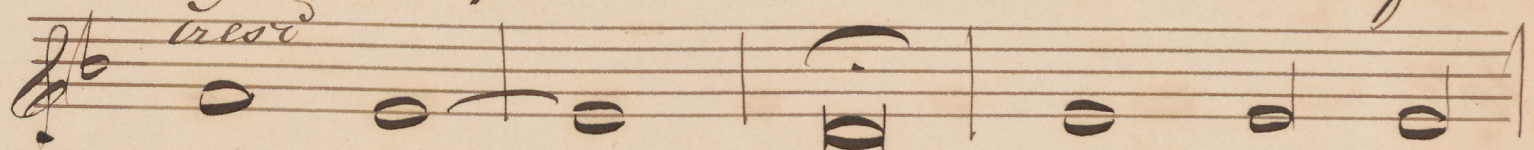
So - ri tu - o. *D.C.* *al fine* N<sup>ro</sup> IV.

N<sup>ro</sup> I. Largo.  
Chor I.

All Chor I. P. A. Praenepini.



So - pu - le me us quid fe -



ci si - bi aut in quo



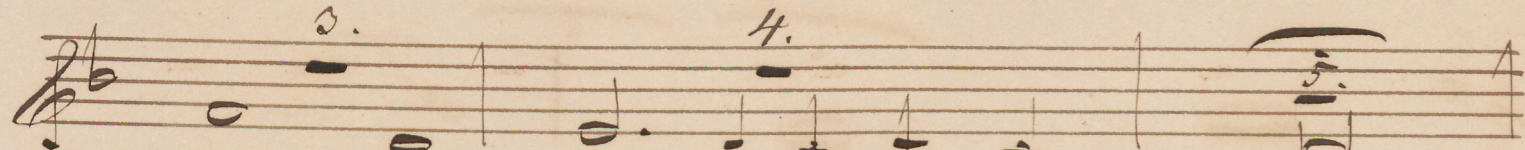
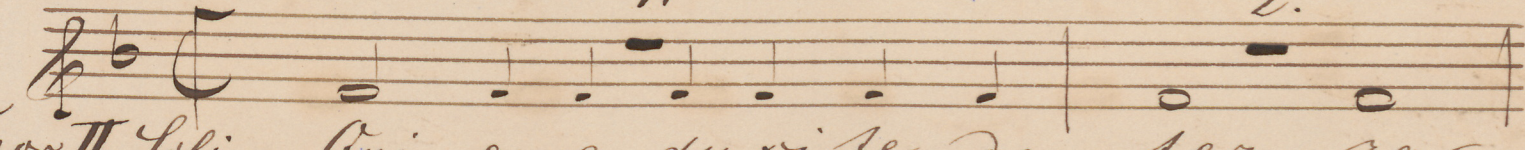
con tri sta vi ti re spon



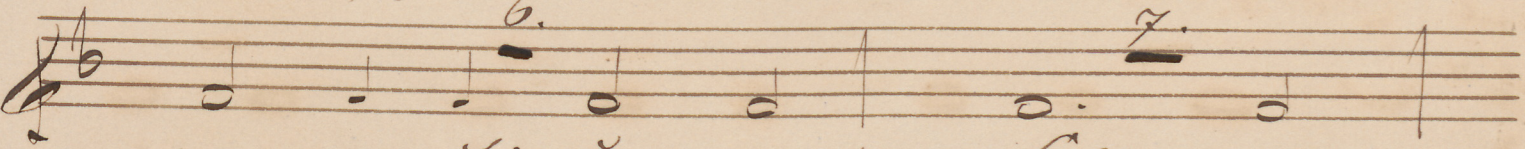
de - mi - hi.

N<sup>ro</sup> II.

Chor II Soli Qui - a e duxi te de ter ra



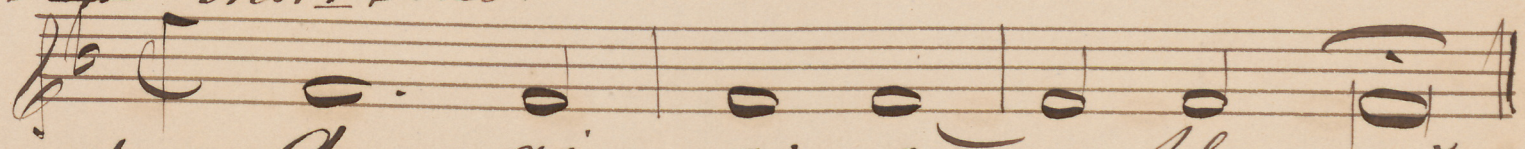
Ae - gy - pli :



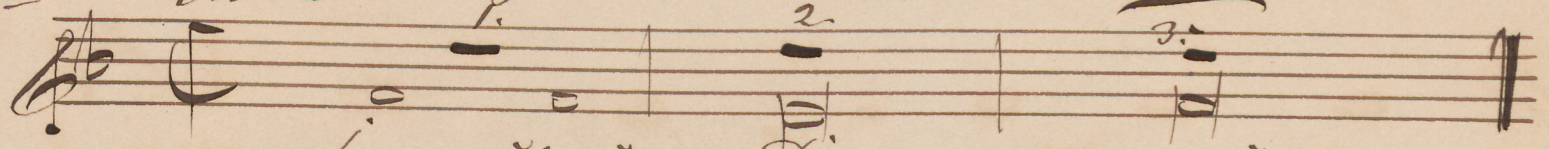
pa - ra sti - en - tem Sal - va -



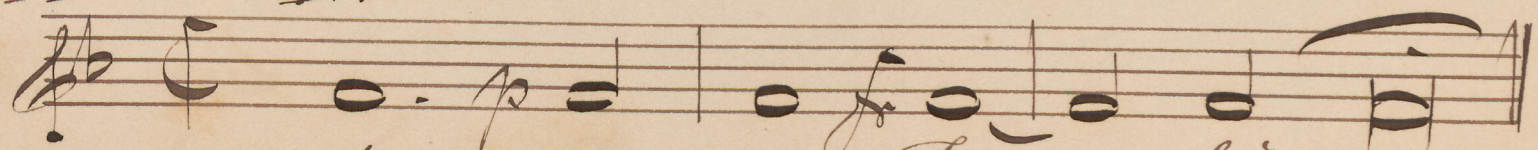
N<sup>ro</sup> III<sup>a</sup> Chor I Tutti.  
So - ri su



N<sup>ro</sup> III<sup>b</sup> Chor II Tutti.  
A - gi - os a - the - os.



N<sup>ro</sup> III<sup>c</sup> Chor I. Tutti  
San - ctus De - us.



A - gi - os So - lus - tus

*No III d. All. Chor I.*

*Chor II. fusti.*

San - ctus for - tis.

*No II a duo Cori.*

*Chor I*

A gi - os a sha na

*Chor II Solo. 1.*

San - ctus e - le i son - i - mas

*Chor I Solo*

mi - fe re re

*no - bis.*

no - bis.

*No I. Chor I tutti*

Qui a e du xi se de ter

ra Ae gy pti

pa ra fti cru - cem Sal va

So - ri su - o. No I

*al fine No II.*



N<sup>ro</sup> I. Largo  
Vox I Solo.

Tenor. Chor I. P. A. Praenestini

Popu-<sup>resit</sup>le me-us quid fe-  
-ci si- bi

aut in quo con-<sup>resit</sup>tra-  
re me spon-<sup>resit</sup>de mi-

N<sup>ro</sup> II.  
-hi. Chor II Solo. Qui a e-  
-ser-<sup>2.</sup> -<sup>3.</sup> -<sup>4.</sup> -  
-<sup>5.</sup> -<sup>6.</sup> -<sup>7.</sup> -  
-<sup>8.</sup> -<sup>9.</sup> -<sup>10.</sup> -  
-<sup>11.</sup> -<sup>12.</sup> -  
-<sup>13.</sup> -<sup>14.</sup> -<sup>15.</sup> -  
-<sup>16.</sup> -<sup>17.</sup> -<sup>18.</sup> -<sup>19.</sup> -<sup>20.</sup> -

N<sup>ro</sup> III  
Vox I  
a-<sup>1.</sup> -<sup>2.</sup> -<sup>3.</sup> -<sup>4.</sup> -<sup>5.</sup> -<sup>6.</sup> -<sup>7.</sup> -<sup>8.</sup> -<sup>9.</sup> -<sup>10.</sup> -<sup>11.</sup> -<sup>12.</sup> -<sup>13.</sup> -<sup>14.</sup> -<sup>15.</sup> -<sup>16.</sup> -<sup>17.</sup> -<sup>18.</sup> -<sup>19.</sup> -<sup>20.</sup> -

N<sup>ro</sup> III b  
Vox II  
San-<sup>1.</sup> -<sup>2.</sup> -<sup>3.</sup> -<sup>4.</sup> -<sup>5.</sup> -<sup>6.</sup> -<sup>7.</sup> -<sup>8.</sup> -<sup>9.</sup> -<sup>10.</sup> -<sup>11.</sup> -<sup>12.</sup> -<sup>13.</sup> -<sup>14.</sup> -<sup>15.</sup> -<sup>16.</sup> -<sup>17.</sup> -<sup>18.</sup> -<sup>19.</sup> -<sup>20.</sup> -

N<sup>ro</sup> III c  
Vox I  
a-<sup>1.</sup> -<sup>2.</sup> -<sup>3.</sup> -<sup>4.</sup> -<sup>5.</sup> -<sup>6.</sup> -<sup>7.</sup> -<sup>8.</sup> -<sup>9.</sup> -<sup>10.</sup> -<sup>11.</sup> -<sup>12.</sup> -<sup>13.</sup> -<sup>14.</sup> -<sup>15.</sup> -<sup>16.</sup> -<sup>17.</sup> -<sup>18.</sup> -<sup>19.</sup> -<sup>20.</sup> -

2.

# Tenor Chor I.

N<sup>ro</sup> III. Chor II tutti.

San - ctus

N<sup>ro</sup> IV. adue Cori.

for - tis

ag - gi - os a kha na

Chor II soli

San - ctus im - mor ta - lis

mi - se - re re

no - bis.

N<sup>ro</sup> V. Chor I tutti.

Qui a e du xi - se

de ber - ra Ae gy - pli:

pa - ra sti iu tem Sal va -

So - ri An - o.

N<sup>ro</sup> I. bis N<sup>ro</sup> II al fine

Wro I.  
Chor I Solo.  
Largo.

Baso Chor I. P. Praenestini. 17

Chor I Solo.

So pu le me no quid fe-  
ri si — bi aut in quo

ron tri sta vi re re spon de  
mi — hi. Solo Chor II

du xi se de ber ra Ae gy-  
pti pa ra sti cru cem

Sal - va - to - ri in -

A - gi os o the os.

San - ctus De - us.

A - gi os Fi - li - us.

San ctus Fi - li - us.

San ctus Fi - li - us.

San ctus Fi - li - us.

*W<sup>ro</sup> IV. aduelori. Bass: Chor I.*

*Chor I.*  
Musical notation for the first staff, starting with a treble clef, a key signature of one flat, and a common time signature. The notes are: C4, G4, A4, B4, C5, B4, A4, G4.

A. gi os a tha na

Musical notation for the second staff, continuing the melody from the first staff.

Soe le i son - i mas

*Chor II Soli*  
Musical notation for the third staff, featuring three first endings marked with 1., 2., and 3.

San ctus in - mor ta - lis

*Chor I.*  
Musical notation for the fourth staff, starting with a piano (*p*) dynamic marking.

mi - fe re re no

*W<sup>ro</sup> V. Chor I Tutti.*

Musical notation for the fifth staff, starting with a *bis. fine* marking.

Qui - a e

Musical notation for the sixth staff.

du xi te de ter ra de

Musical notation for the seventh staff.

gy - phi : pa ra sti

Musical notation for the eighth staff.

eru - cem Sal va to ri

Musical notation for the ninth staff.

su - o.

*D.C. W<sup>ro</sup> I bis  
W<sup>ro</sup> II al fine*

Empty musical staves at the bottom of the page.

N<sup>ro</sup> I Largo. Sopran Chor II. P. A. Praenestini.

Chor II.

So - pu - le me us' quid fe -  
ri si - bi aut in quo  
con tri sta vi se re spon - de mi - hi.

N<sup>ro</sup> II Chor II Solo.

Quia e duxite de Aer ra  
Ae gy - ptu: na ra sti ou cem Sal va -

N<sup>ro</sup> III<sup>a</sup> Chor I Tutti.

So - ri Au - o.

N<sup>ro</sup> III<sup>b</sup> Chor II Tutti.

A - gi os o - she ros.

N<sup>ro</sup> III<sup>c</sup> Chor I Tutti.

San - ctus De - us.

N<sup>ro</sup> III<sup>d</sup> Chor II Tutti.

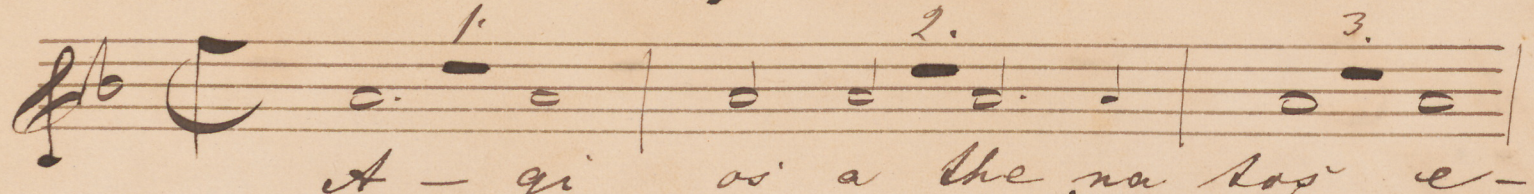
A - gi os So - cy - ros.

N<sup>ro</sup> III<sup>e</sup> Chor II Tutti.

San - ctus for - sis.

P.S.

N<sup>ro</sup> IV, a duetori. Sopran Chor II.

1. 

A - gi os a the na sap e -

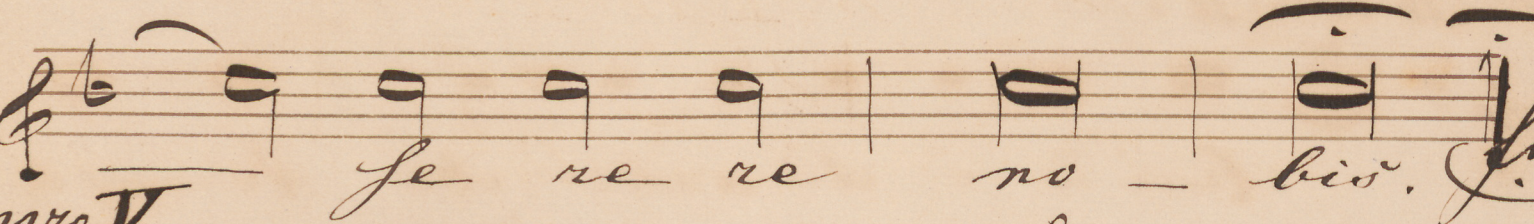
4. 

5. Chor II. Solo.

le i - son - i mas San - ctus

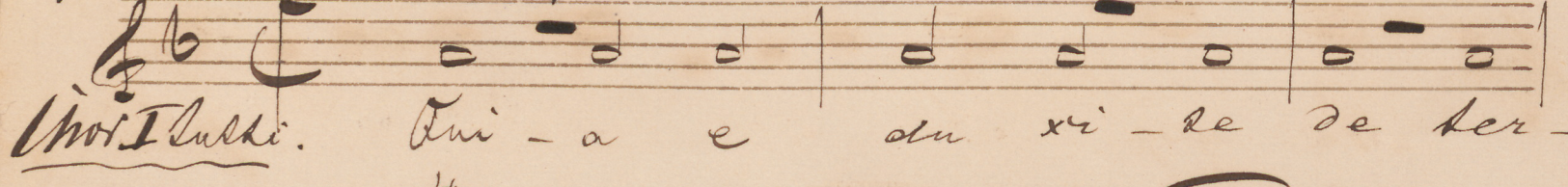


im - mor - ta - lis - mi -



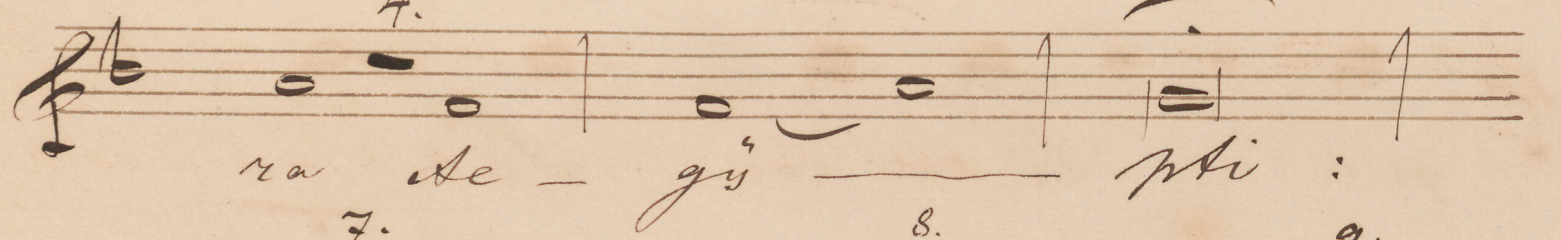
se - re - re no - bis. Fine

N<sup>ro</sup> V.

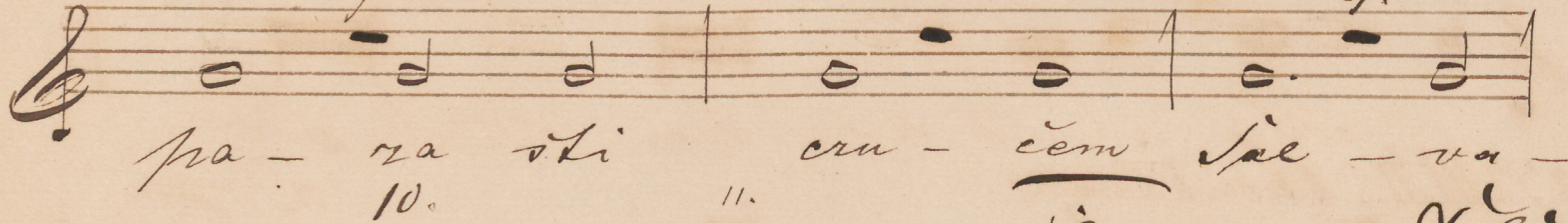
1. 

Chor I. Tutti.

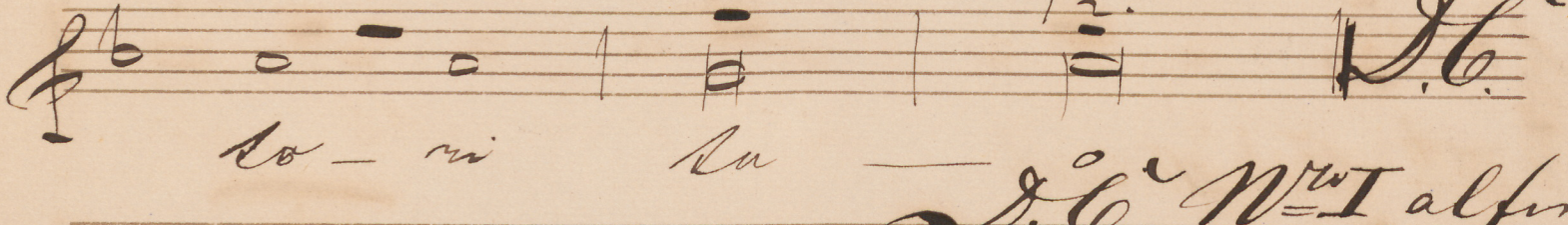
Qui - a e du xi - te de ter -

4. 

ra de - gi - sti :

7. 

pa - ra sti cru - cem sal - va -

10. 

to - ri sa

J.C. N<sup>ro</sup> I al fine

N<sup>ro</sup> IV.



*N<sup>ro</sup> I.*  
*Chor I Solo*  
*Largo.*

*Alt Chor II.*

*P. A. Praetorius.*

1. 2. 3.

4. 5. 6. 7.

8. 9. 10.

So - nu - le - me - us - quid fe -

11. 12. *N<sup>ro</sup> II. Chor II Solo.*

ci - ti - vi - aut in quo -

con - tri - sta - vi - se - re - spon - de -

mi - hi Quia e - duxi te de -

ser - ra - te - gy

*N<sup>ro</sup> III<sup>a</sup> = Chor I*

sti : pa - ra - sti - ru - cem Sal - va -

*Chor I Tutti Solo* 1. 2. 3. *N<sup>ro</sup> III<sup>b</sup> = Chor II Tutti*

A - gi os o - tha - os San - ctus

*N<sup>ro</sup> III<sup>c</sup> = Chor I Tutti*

De - us. A - gi os So - chyos.

*Chor II Tutti*

*Chor II.* 1. 2. 3. *N<sup>ro</sup> IV*

San - ctus for - sis. adue - lori.

A - gi os a - tha - na - tos e - us.

# Alto Chor II.

4. 5. Chor II Solo.

le i son - i mas San tus  
im - mor ta - lis mi -  
fe re re no - bis. Fine.

*no IV.*  
*no I.*  
*tutti*

Qui a e du xi te  
de ser ra ae gy pti  
pa - ra sti cru - cem sal va  
so - ri tu o.

*no I. al no IV.*  
*Fine*



*no I Chor I. Tenor Chor II. P. A. Praetorius.*

*Largo.*

*Chor I Solo.*

1. 2. 3.

*res.* 4. 5. 6.

7. 8. 9.

10. 11. 12.

*res.*

Popule meus quid fe-  
ci tibi  
ant in quo con-  
sisti a vi-  
re re-  
spon-  
de mi-  
hi.

*no II Chor II Solo.*

*res.*

Qui a e duxi te de ter-  
ra  
Aegyp-  
ti:  
pa-  
ra-  
sti ierusalem Sal-  
va-  
to-  
ri tu-  
o.

*no III a.*

*Chor II tutti.*

1. 2. 3. 4.

a gi os o-  
she os.

*no III b.*

*Chor II tutti.*

San-  
ctus De-  
us.

*no III c.*

*Chor I tutti.*

1. 2. 3. 4.

a gi os Is-  
rahel-  
ro-

2.

N<sup>ro</sup> III<sup>o</sup>.  
Chor II. Tutti

Tenor. Chor II.

San ctus for tis.

N<sup>ro</sup> IV. *adulori.* 1.

a gi us a dha na logi e

le i son - i mas San ctus

im mor ta - lis - mi -

fe re re no - bis.

N<sup>ro</sup> V.  
Chor I.  
Tutti

Qui a e du xi te de ter -

ra Ae - gy - pti:

pa - ra sti - ru com Sal va -

ho - ri tu o.

N<sup>ro</sup> 1. D<sup>o</sup>.  
al Fine N<sup>ro</sup> IV.

*Nro I. Chor II.*

*Basso: Chor II. P. Praenestini.*

*Largo. Chor I Solo.*

*Pro - pu - le me us quid fe -*

*ri si bi aut in quo*

*con tri sta vi se re spon de*

*mi si. Qui a e*

*du xi te de ter ra de gy -*

*phi: pa ra sti crum sem*

*Sal - va so - ri su - o.*

*Nro III = Chor I. Tutti*

*al - gi os o the vo.*

*Nro III = Chor II. Tutti*

*San - ctus De - us.*

*Nro III = Chor I. Tutti*

*al - gi os Fi - ihy ros*

*Nro III =*

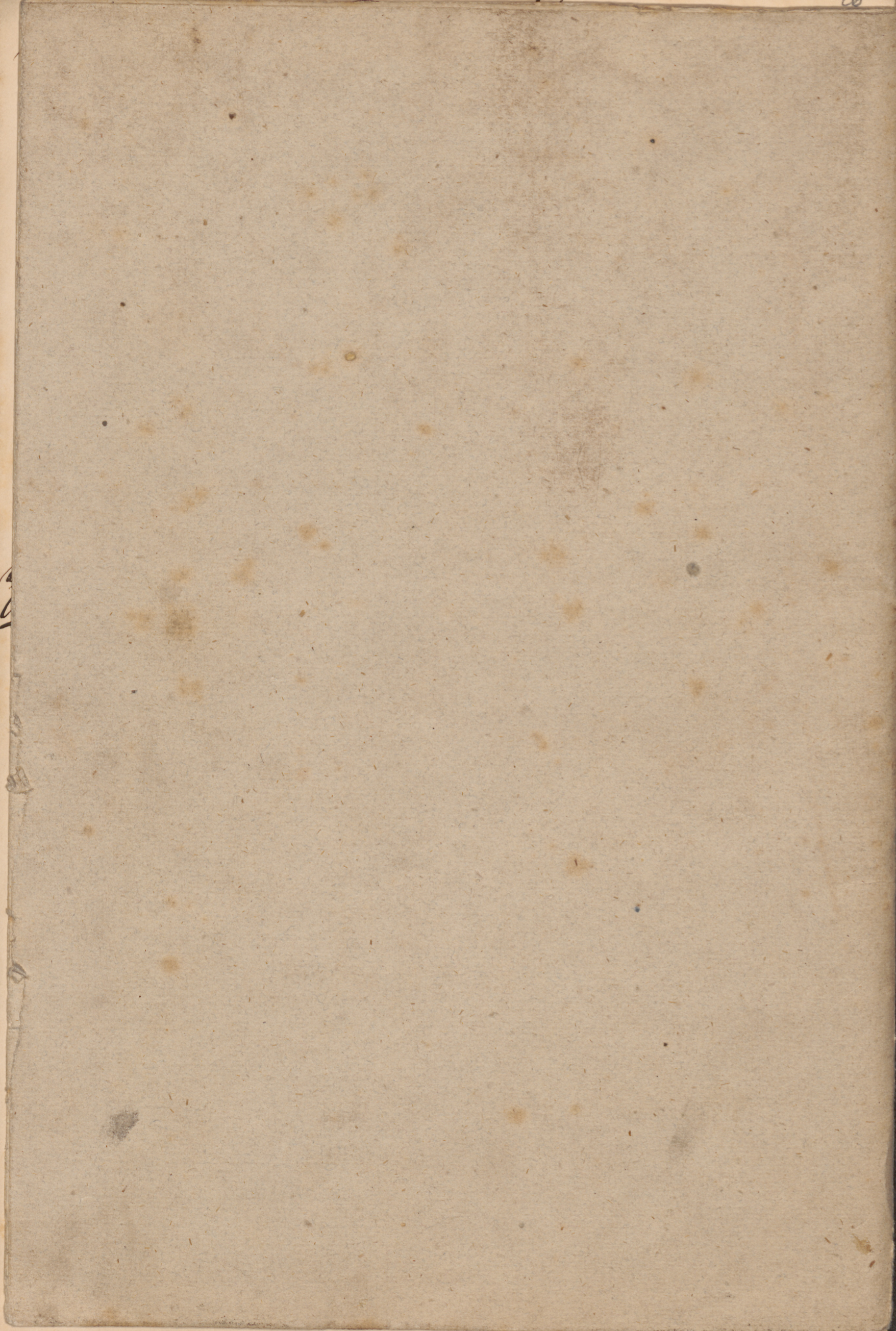
*Chor II Tutti*

*San ctus for - tis.*

# N<sup>ro</sup> IV. adue Coro. Bassi Chor II.

Chor I. *1.* a - gi os a tha na ko - e  
*2.* le i son i mas *3.* San - ctus  
*4.* im - mor sa *5.* lis mi -

N<sup>ro</sup> V. Chor I. *1.* fe re re no - bis. *2.* fine  
*3.* Qui a e du xi te de ter -  
*4.* ra Ae - gy - *5.* psi : pa -  
*6.* ra - *7.* sti  
*8.* ſra - *9.* cem Sal - *10.* va - *11.* ro - *12.* ri  
*13.* ku *14.* al fine.



MU 093 VIII-12

G. P. da Palestrina, Improperia



Schloßkirchen-  
Gemeinde



**Ev.-Luth. Schloßkirchengemeinde  
Schwerin**

Evangelisch-Lutherischer  
Kirchenkreis Mecklenburg

Depositum in der Bibliothek des  
Landeskirchenamts Schwerin  
<https://nordkirche.bibliotheca-open.de/>

