

**Fratres ego enim : Schloßkirchengemeinde Schwerin, MU 093 VIII-17**

<http://purl.uni-rostock.de/rosdok/ppn1774579766>

Musikhandschrift    Freier  Zugang





142

Motetto: Fratres ego enim

404

Palestrina.

No 26.

Simone

8 Soprano	1
8	1
6 Alto	1
6	1
4 Tenor	1
4	1
6 Bass	1
6	1

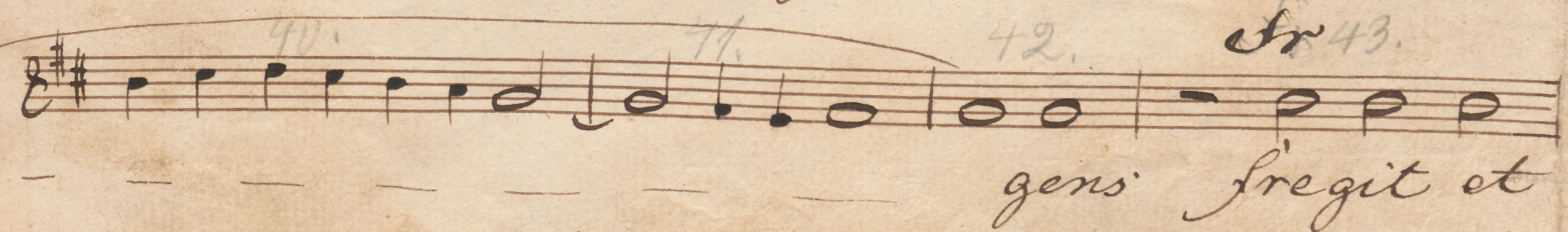
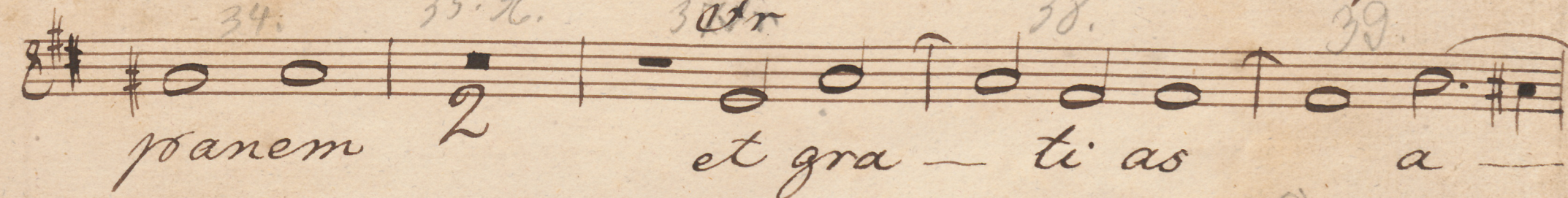
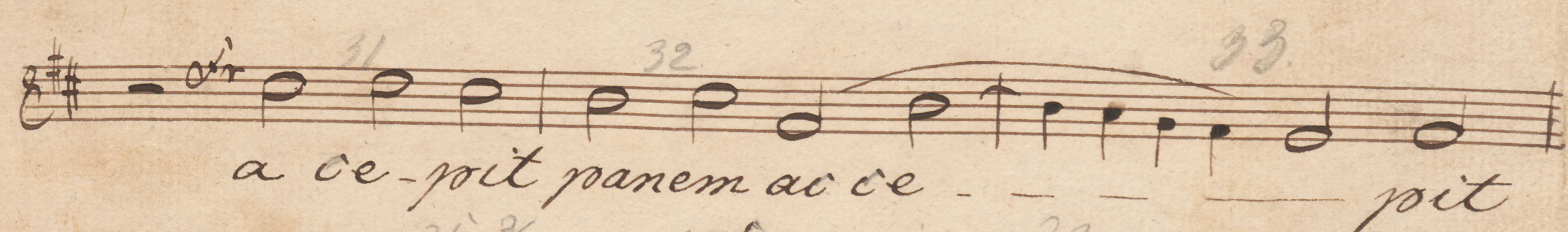
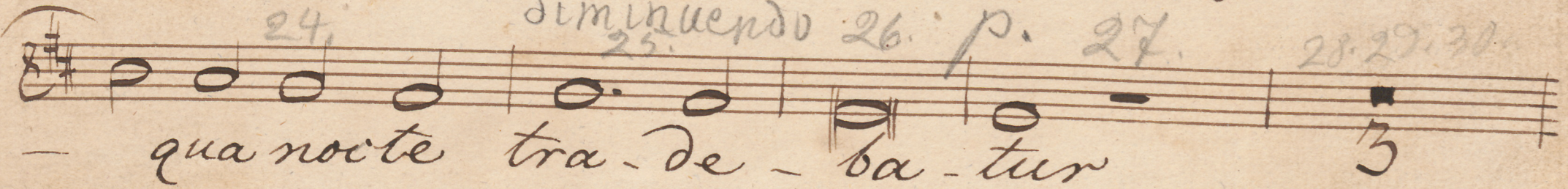
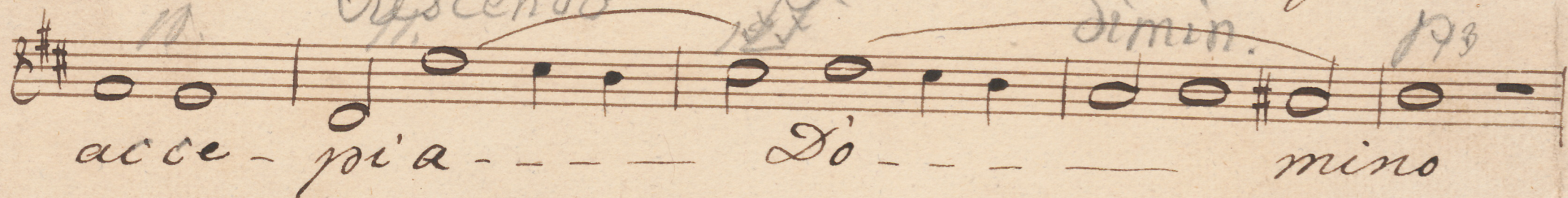
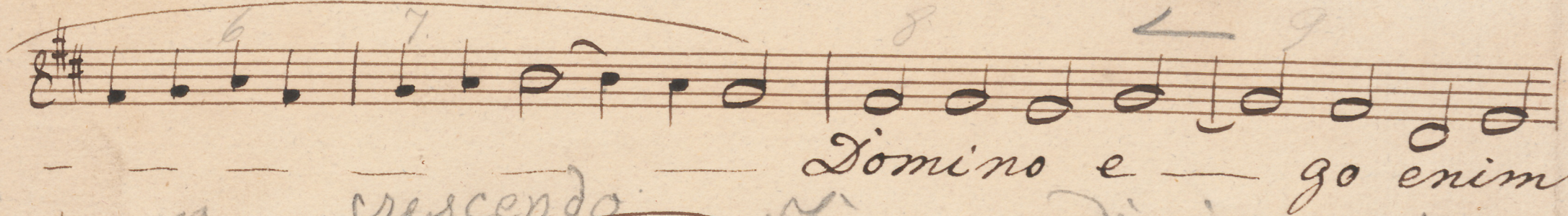
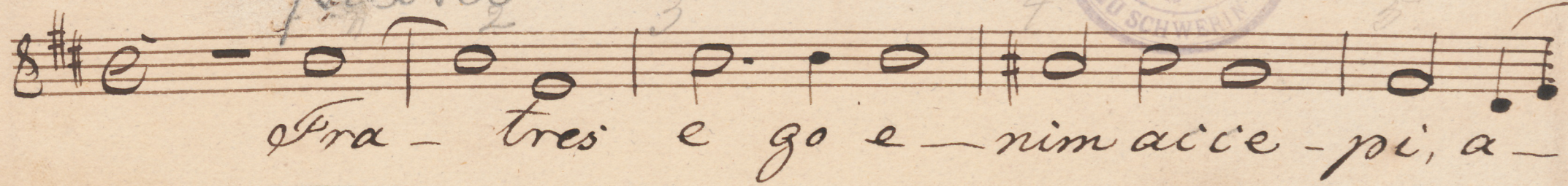




# Coro I Soprano.

Palestrina

1





Handwritten musical score in G major (one sharp) and 4/4 time. The score consists of eight staves of music with lyrics in Latin and French. The lyrics are: "di - xit ac - ci pi te et man du ca - - - te hoc - - - est cor pus meum ac ci - pi te et man du - ca - te hoc - - - est cor pus me - - - um hoc fa ci te in me am com me mo ra ti - - - o - nem hoc fa ci - te in me - am comme mo ra - - - ti - o - nem."

The score includes various musical notations such as notes, rests, and bar lines. It also features handwritten annotations including measure numbers (44, 45, 46, 47, 48, 49, 50, 51, 52, 53, 54, 55, 56, 57, 58, 59, 60, 61, 62, 63, 64, 65, 66, 67, 68, 69, 70, 71, 72, 73, 74, 75, 76, 77), dynamic markings (*diminuendo*, *p*, *pp*), and performance instructions (*rit*, *cr*, *pp*, *pp*).



# Coro I

## Alto.

Palatrina

3



*piano*

Frates e - go e - nim aie - pia

*diminuendo*

Do - mino e - go e - nim ai -

*piano*

- ie pi a - Do - mino

Quod et tra - di di oo - bis Quo - ni

am Do - minus Je - sus in qua nocte

tra - de - ba - tur aie pit

panem ai ce - - - pit panem

et gra - ti as a - gens fregit et

di - xit di - xit

2



*fr* 48 49 50 51  
a-ci-pi-te et man-du-ca-te hoc — est  
*diminuendo* 52 *piano* 53 54 55 56 57 *fr*  
cor — pus meum ai —  
ci-pi-te et man-du-ca — te hoc  
11 62 63 64 65 66 67 *fr*  
est cor — pus me — um hoc  
68 69 *diminuendo* *piano*  
fa-ci-te in me-am com-me-mo-ra-tio-nem  
*fr* 72 73 74 75  
hoc fa-ci-te in me-am com-me-mo-ra  
*diminuendo* 76 *piano* 77  
ti-o-nem.

*Piane*



## Coro I.

## Tenore.

Palestrina

5

5 6 piano 7 8 9

Fra - tres e - go. e - nim aic'e

10 11 12 *diminuendo* *piano*

mi a - - - - - Do - - - - - mins

17 18 19 20

3 Quod et tra di di vo - bis Quo - ni

21 22 23 24

am Do - minus Jesus in qua no

25 *diminuendo* 26 *piano* 27

cte tra de ba - - - - - tur 3

31 32 33

acce pit panem aic'e - - - - - pit

panem 2 et gra - - - - - ti as

a - - - - - gens fregit et di xit di

xit 1 aic'i - pi - te et man du



cia - - - - - te hoc - - - - - est

corpus meum *H* acci'pite et

manduca- te hoc *diminuendo piano* est corpus meum

*fin* 3 hoc fa ci- te in me am com

me mora ti - o- nem hoc fa ci- te in

*diminuendo piano* me am com me- mo- ra - - - ti - o -

*L7* nem -



7

crescendo

22

diminuendo piano

*diminuendo piano*

pi a - - - - - Do - - - - - mino 3

A handwritten musical score on a single staff. The key signature has two sharps (F# and C#), indicating D major or B minor. The time signature is common time (C). The melody begins with a whole rest followed by a quarter note G4. It continues with a half note A4, a quarter note B4, a half note C5, a quarter note B4, a half note A4, a quarter note G4, a half note F#4, and a quarter note E4. There are several measures with rests, including a full measure rest, a half measure rest, and another full measure rest. The piece concludes with a final whole note D4. Below the staff, there are some faint handwritten notes, possibly "Dura t t".

Quod et tra - di di vo - bis Quo - ni -

Handwritten musical notation on a single staff. The key signature is one sharp (F#). The melody consists of a half note G4, followed by a quarter rest, then a quarter note A4, a quarter note B4, a quarter note C5, a quarter note B4, a quarter note A4, a quarter note G4, a quarter note F#4, a quarter note E4, and a quarter note D4. The lyrics "am Gi mi" are written below the notes.

am Do minus Je sus in qua

~~diminuer~~

piano

diminuendo piano

noite, tra-



Handwritten musical notation on a single staff. The key signature has two sharps (F# and C#). The melody consists of quarter and half notes. The lyrics "noite, tra-" are written below the staff.

noite tra - — de ba - — tur 3

Handwritten musical notation on a single staff. The key signature is two sharps (F# and C#). The notation includes a whole rest, followed by a series of eighth and quarter notes, some with accidentals (sharps and naturals). There are handwritten annotations: "fir" above the first few notes, "ch" above a later note, and "min" below the staff.

ai ce pit panem ai ce — pit panem

Handwritten musical notation on a single staff. The key signature has two sharps (F# and C#). The time signature is 2. The notation includes a whole rest, followed by a half note G4, a half note A4, a half note B4, a half note C5, a half note B4, a half note A4, and a half note G4. There are handwritten "cres." markings above the first and last notes.

et gra-ti-as a-gens fre

git et di- - - - - rit

ai-ci pite et manduca



Handwritten musical score on a single staff in G major (one sharp). The lyrics are in Latin. The score includes various musical notations such as notes, rests, and dynamic markings.

te — acci pi te et  
man du ca - te hoc est corpus  
meum 3 diminuendo hoc faci te in  
me am com me mora ti o - nem hoc  
faci - te in me am com me mo rati  
o - nem.



# Coro II

# Soprano

Valestrina

9

1-14 *piano* 16.

Quod et tra - di di vo

18 *fr* 20 *fr*

bis Quo ni - am Do

22 *allegro* 23 24 25 *fr*

minus Je - sus 3 Do

28 *dimin.* *piano*

minus Je - sus in qua nocte tra

30 *fr* 32 *p.* 33

De ba - tur ai ce pit panem

34 *fr* 36

et gra ti - as a

38 *fr* 39 *fr* 40 *fr* 41 *fr* 42 *fr*

gens et gra - ti - as a gens

44 *fr* 45 *fr* 46 *piano*

Fre git et di

47 *fr* 48-52 *fr* 53 *fr* 54

sit ai - ci - pite et



*piano*

manduca te hoc - - - - - est corpus

meum *H* hoc faci-te in

*diminuendo* *piano* meam com me mora ti - o nem

hoc faci te in meam com

*diminuendo* *piano* me mo ra ti - o - - - - - nem





# Coro II.

## Alto

Calistrina

11



*piano* 12 13 14 15

Quod et tra - di di vo bis quod et tra

16 *p.* 17 18 *ff* 19 20

di di vo bis Quo ni - am Do -

21 22 23 24 25 26 *fr*

minus Je - sus Do -

27 28 29 30

minus Je - sus in qua nocte tra - de ba

31 32 33 34 35 36

tur ac ce pit pa - - - - - nem

37 38 39 40 41

et grati as a - - - - -

42 43 44 45

gens et gra - ti - as a - - - - -

46 47

gens fregit et - - - - -

48 49

di - - - - - nit





41. 42. 43. 44. 45. 46. 47. 48. 49. 50. 51. 52. 53. 54. 55. 56. 57. 58. 59. 60. 61. 62. 63. 64. 65. 66. 67. 68. 69. 70. 71. 72. 73. 74. 75. 76. 77. 78. 79. 80. 81. 82. 83. 84. 85. 86. 87. 88. 89. 90. 91. 92. 93. 94. 95. 96. 97. 98. 99. 100.

*fr*

*diminuendo* *piano*

*fr* *diminuendo* *piano* *pp*

ai-ci - pi - te et man - du - ca

te ho - est cor - pus me - um

ho - sa - ci - te in me - am com

me mo - ra - ti - onem

sa - ci - te in me - am com me mo - ra - ti -

o - nem com me mo - ra - ti - o - nem.



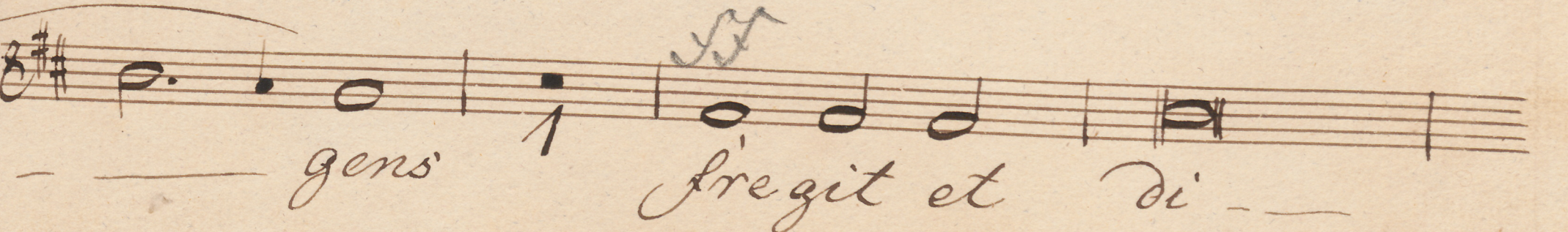
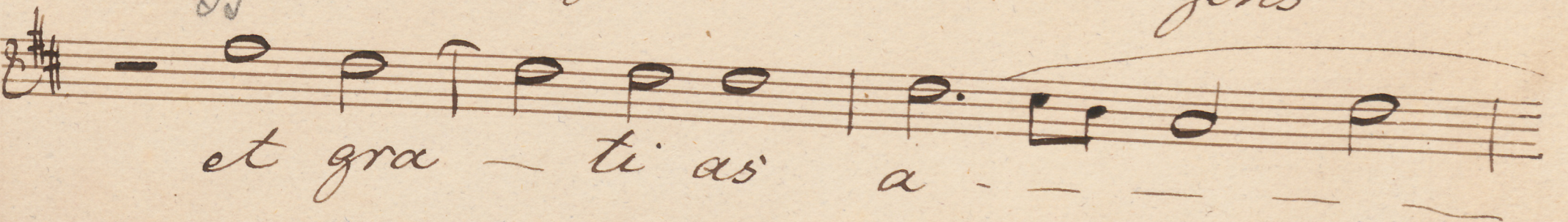
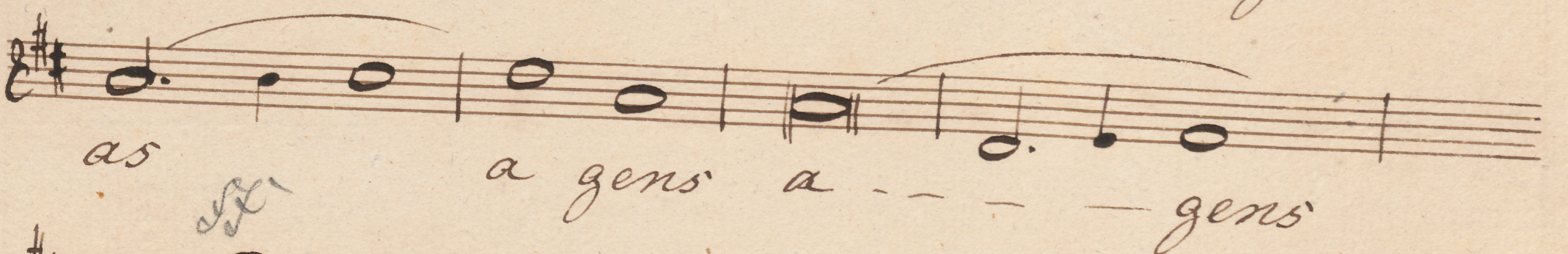
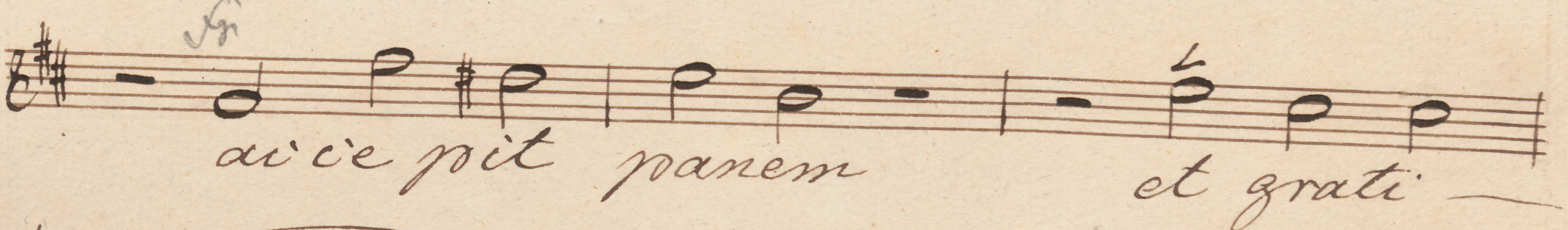
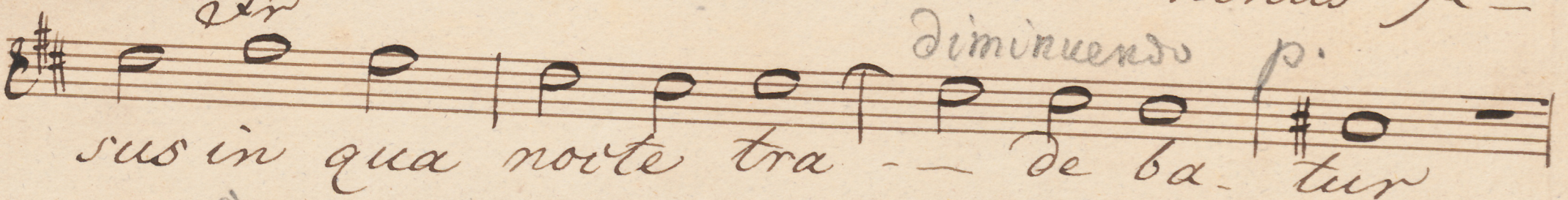
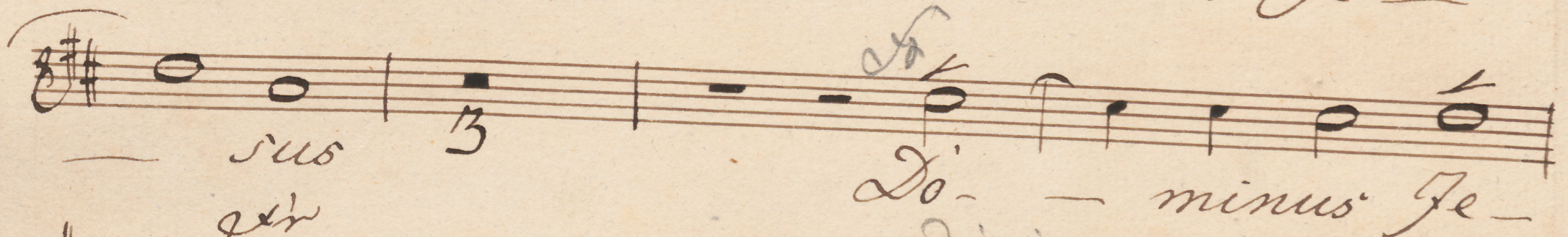
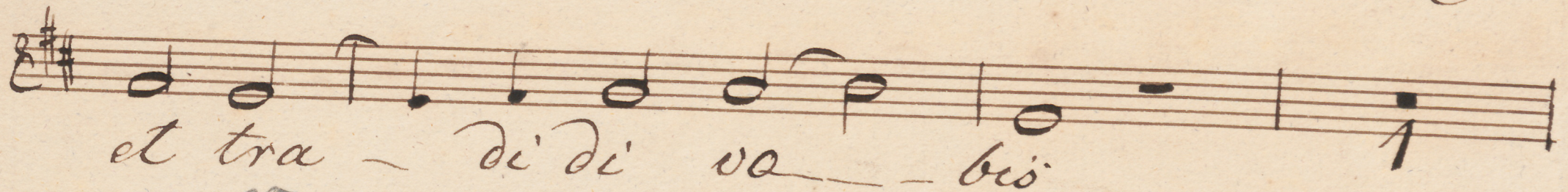
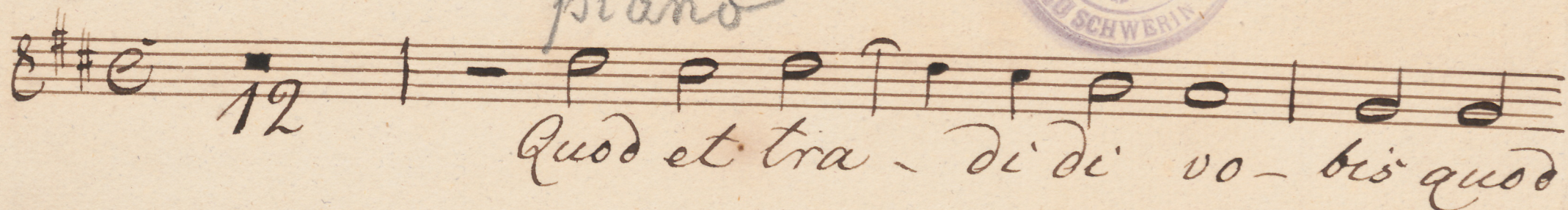
# Coro II

## Tenore

piano

Palustrina

13





*Dimin.* *5* *fr*  
 - xit et di - xit accipi  
 te et manduca. te hoi - est  
*diminuendo* *p.* *fr*  
 corpus me - um hoi  
*diminuendo*  
 fa' ci te in me am com me mora ti -  
*piano*  
 o - nem *3* hoi fa - ci - te in  
*diminuendo*  
 me am com me mo ra - ti o -  
*piano* *pp*  
 nem.



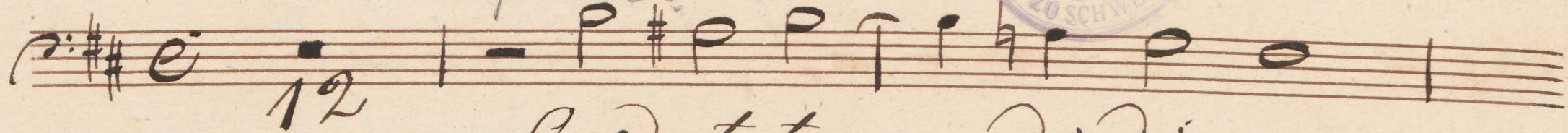
# Coro II.

## Basso.

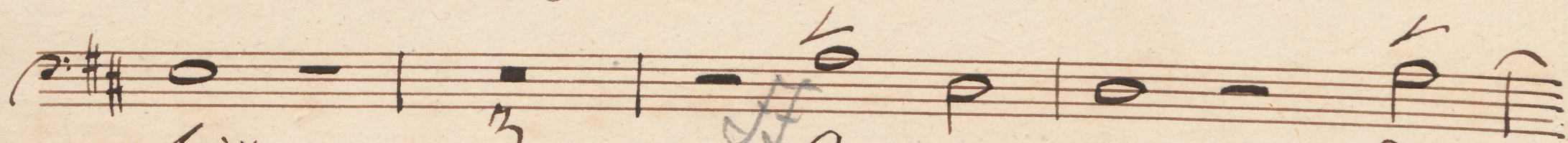
Palestrina

15

*piano*



Quod et tra - di di vo -

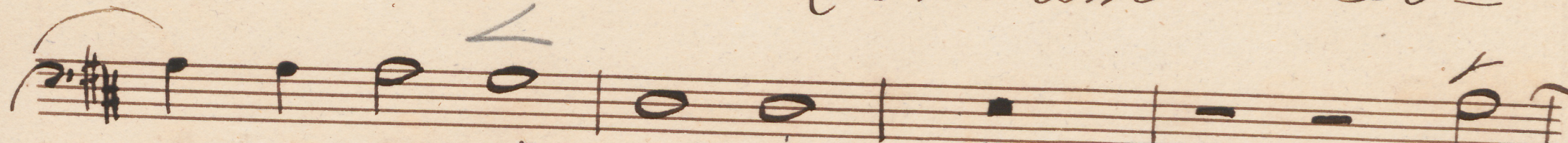


bis

3

Quo ni am

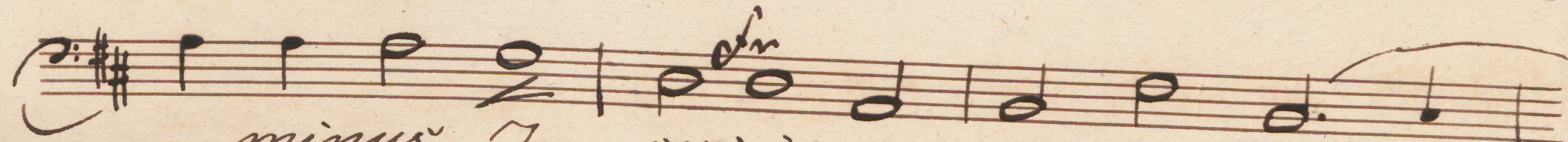
Do -



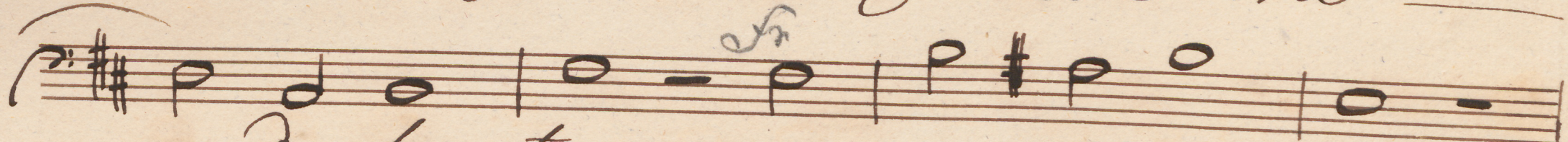
minus Je - sus

3

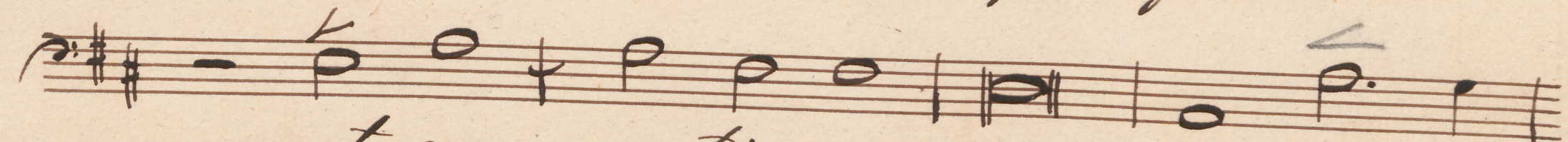
Do -



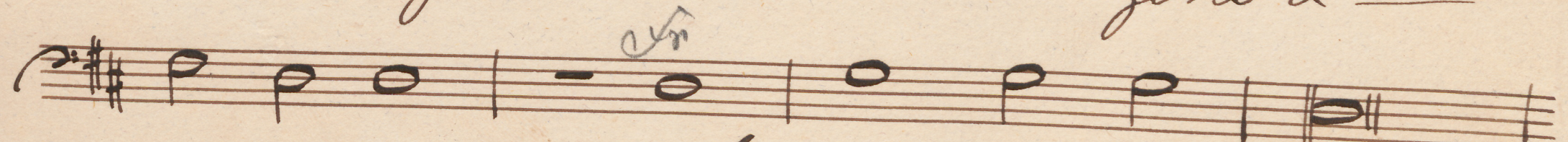
minus Je - sus in qua nocte tra



de ba - tur ac - ce pit pa nem

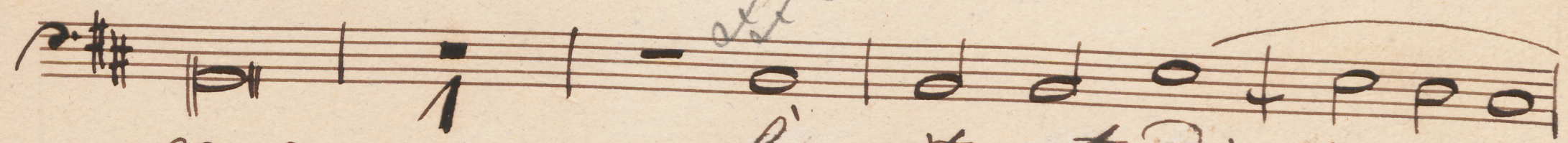


et gra - ti as a - gen sa -



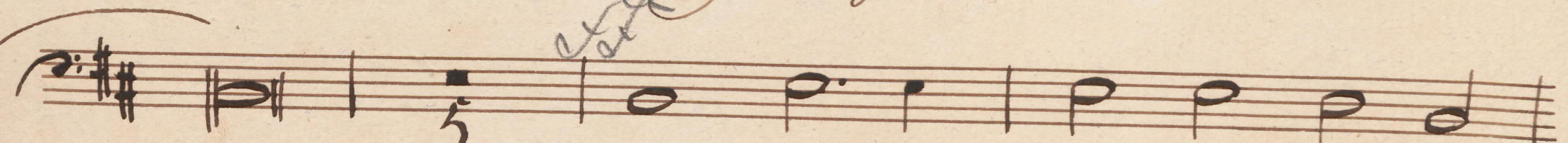
gens

et gra ti - as a



gens

fre git et di -



xit

ac ci pi - te et man du





*cate* *hoc* *eot corpus*  
*meum* *diminuendo* *hoc fa. ci te in*  
*me am com me mo ra ti - o - nem* 3  
*hoc fa ci te in me am com*  
*me mo ra - ti - o - - - nem.*



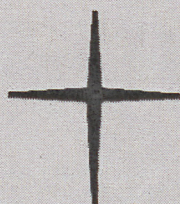


MU 093 VIII-17

G. P. da Palestrina, Fratres ego enim



Schloßkirchen-  
Gemeinde



**Ev.-Luth. Schloßkirchengemeinde  
Schwerin**

Evangelisch-Lutherischer  
Kirchenkreis Mecklenburg

Depositum in der Bibliothek des  
Landeskirchenamts Schwerin  
<https://nordkirche.bibliotheca-open.de/>

