

Adolf Bernhard Marx

Crucifixus für acht Stimmen : Schloßkirchengemeinde Schwerin, MU 093 VIII-19

<http://purl.uni-rostock.de/rosdok/ppn1774587742>

Musikhandschrift Freier  Zugang 

946

Crucifixus zu 8 Stimmen

von

Ant. Lotti.

No. 20.

137 Partitur Stimmen.

85.

8	Can.	5
8	-	5
7	Viol.	5
5	-	5
3	Viol.	5
3	-	5
3	Org.	5
3	-	5

1

Crucifixus für acht Stimmen.

von

Antonio Lotti

herausgegeben von

A. B. Marx.

Partitur.



Largo assai. Crucifixus für acht Stimmen.

Handwritten musical score for eight voices and organ. The score is written on ten staves. The first two staves are labeled 'Canto 1' and 'Canto 2'. The next four staves are labeled 'Alto 1', 'Alto 2', 'Tenore 1', and 'Tenore 2'. The last two staves are labeled 'Basso 1' and 'Basso 2'. The organ part is labeled 'Organo'. The music is in E-flat major and common time. The lyrics are 'Crucifixus'.

1. 2. 3. 4. 5. 6. 7.

Handwritten musical score consisting of ten staves. The lyrics are written in Latin and include: *etiam pro nobis crucifixus etiam pro nobis sub pontio pilato*. The notation includes various musical symbols such as clefs, notes, rests, and accidentals. The lyrics are: *etiam pro nobis crucifixus etiam pro nobis sub pontio pilato*. The lyrics are: *etiam pro nobis crucifixus etiam pro nobis sub pontio pilato*. The lyrics are: *etiam pro nobis crucifixus etiam pro nobis sub pontio pilato*. The lyrics are: *etiam pro nobis crucifixus etiam pro nobis sub pontio pilato*. The lyrics are: *etiam pro nobis crucifixus etiam pro nobis sub pontio pilato*. The lyrics are: *etiam pro nobis crucifixus etiam pro nobis sub pontio pilato*. The lyrics are: *etiam pro nobis crucifixus etiam pro nobis sub pontio pilato*. The lyrics are: *etiam pro nobis crucifixus etiam pro nobis sub pontio pilato*. The lyrics are: *etiam pro nobis crucifixus etiam pro nobis sub pontio pilato*. The lyrics are: *etiam pro nobis crucifixus etiam pro nobis sub pontio pilato*.

14.

15.

16.

17.

18.

19.

Handwritten musical score for a choir. The score consists of ten staves. The lyrics are: 'pontio pi-lato pas sus sub pontio pi la to'. The music is written in a system with ten staves. The lyrics are written below the staves. The score is handwritten and appears to be a manuscript.

20.

21.

22.

23.

24.

25.

Handwritten musical score with ten staves. The lyrics are written below the notes. The lyrics include: *sus*, *pas*, *sus et se pul - tus*, *ponti o pi la - to*, *sub ponti o pi la - to*, *pas - sus et se pul - tus*.

26. 27. 28. 29. 30. 31.

forte

est passus et se pul tus
 est passus et se pul tus
 est passus et se pul tus
 est passus et se pul tus
 est passus et se pul tus
 est passus et se pul tus et se pul tus
 est passus et se pul tus
 est passus et se pul tus
 est passus et se pul tus
 est passus et se pul tus

32.

33.

34.

35.

36.

37.

piano

Handwritten musical score for a choir, consisting of 12 staves. The lyrics are: "et sepulchris est." The music is written in a single system with four measures. Each staff has a unique key signature and clef. The notes are mostly half notes and whole notes, with some slurs. The lyrics are written below the notes in a cursive hand.

38. 39. 40. 41.



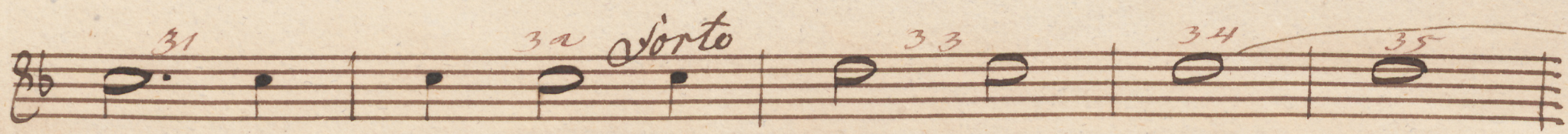
Canto 1

Crucifixus für acht Stimmen v. Ant. Lotti
herausgegeben v. A. P. Marx

Largo assai Basso Canto 1

1 2 3
4 5 6 7 8 9
10 11 12 13
14 15
16 17 18
19 20 21 22
23 24 25 26
27 28 29 30

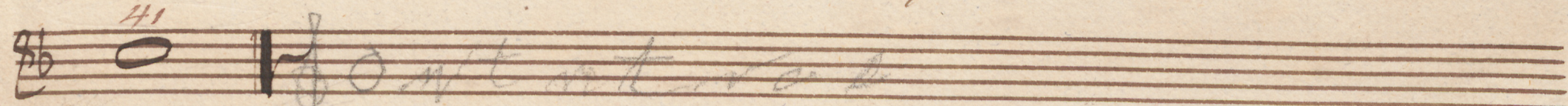
cruci-fi-
xus
cruci-fi-
xus
cruci-fi-
xus
e-ti-am pro no-
bis
e-ti-am pro no-
bis
sub ponti-o pi-la-to
ras
sus
ras
sus et se



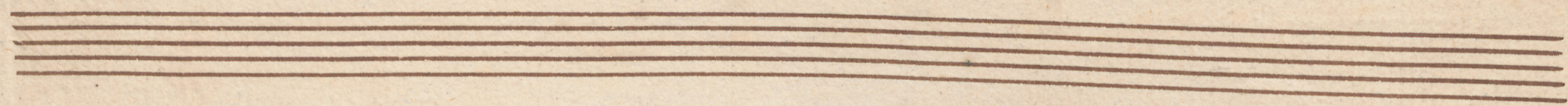
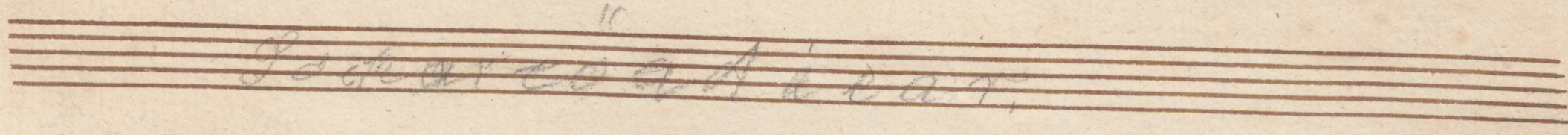
poul-tus est passus et se-pul



tus et se-pul - tus



est.



32 forte
 33
 34
 35
 est passus et se - pul - - - - -
 36
 37
 piano 38
 39
 40
 - - - - - tus et se - pul - - - - - tus
 41
 est.

Empty musical staves for accompaniment.

Tenore 1



*Crucifixus für acht Stimmen v. Ant. Lotti
herausgegeben v. E. B. & Maria*

Largo assai E^b C Grasso *Cruci - fi -*

Tenore 1 E^b C Grasso *Cruci - fi - aus cru - ci - fixus*

E^b C Grasso *cru - ci - fi - aus cru - ci - fi - aus*

E^b C Grasso *e - ti - am pro no - bis*

E^b C Grasso *cru - ci - fixus e - ti - am pro no*

E^b C Grasso *bis sub ponti - o pi - la - to sub ponti - o pi -*

E^b C Grasso *la - to sub ponti - o pi - la - to sub*

E^b C Grasso *ponti - o pi - la - to sub ponti - o pi - la - to*

Handwritten musical score on a single staff with lyrics in French. The lyrics are: "pas - sus et se - pul - tus est pas - sus et se pul - tus et se - pul - tus et se - pul - tus est." The score includes measure numbers 26 through 41 and performance markings such as "piano" and "forte".

pas - sus et
 se - pul - tus est pas - sus et se pul
 tus et se - pul - tus et se - pul
 tus est.

Five empty musical staves, each consisting of five horizontal lines, arranged vertically on the page.

Basso 1



Crucifixus für acht Stimmen v. Ant. Lotti
herausgegeben v. A. B. Marx

Largo assai **1** *Basso 1* *Basso 2* *Cruci:* *Cruci-fi*

1 *2* *3*

4 *5* *6* *7* *8*

9 *10* *11* *12* *13*

14 *15*

16 *17* *18* *19*

20 *21* *22*

23 *24* *25*

26 *27* *28*

Crucifixus etiam pro nobis crucifixus etiam pro
 nobis sub ponti-o pi-la-to
 sub ponti-o pi-la-to sub
 ponti-o pi-la-to pas-
 sus sub ponti-o pi-la-to sub

monti-o pi-la-to pas-sus et se-pul-tus

 est pas-sus et se-pul-tus

 et se-pul-tus est.

Canto 2.



Crucifixus für acht Stimmen v. Ant. Lotti
herausgegeben v. A. B. Mann.

Largo assai $\text{C} \flat$ C *Masso*

1 2
Cru - ci - fi -

3 4 5 6
xus # Cru

Canto 2.7
8
Cru ci - fi -

9 10
xus # Cru

11 12 13
xus cru ci - fi - xus e - ti - am pro -

14 15
no - bis cru - ci - fi - xus e - ti - am pro

16 17 18 19
no - bis pro no - bis

20 21 22 23
pas - sus

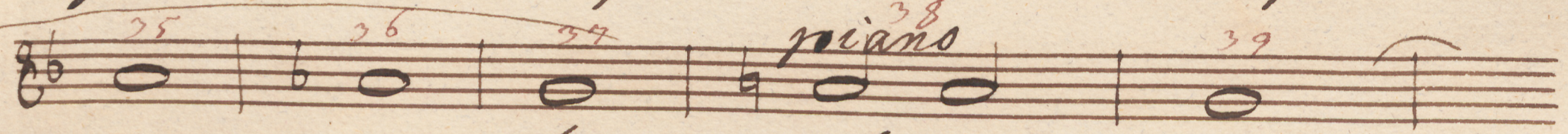
24 25 26
sub pon - ti - o pi - la - to pas



sus pas - - - - - sus et se



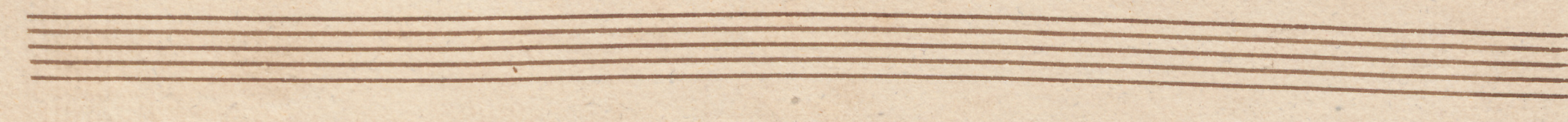
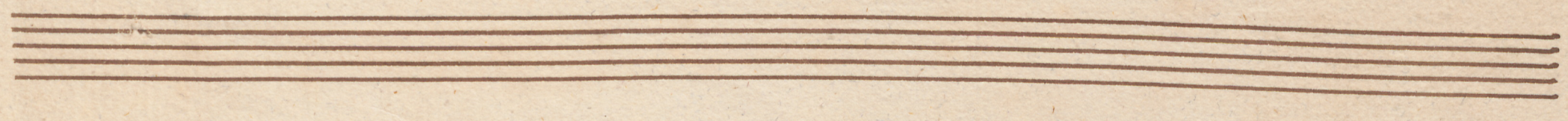
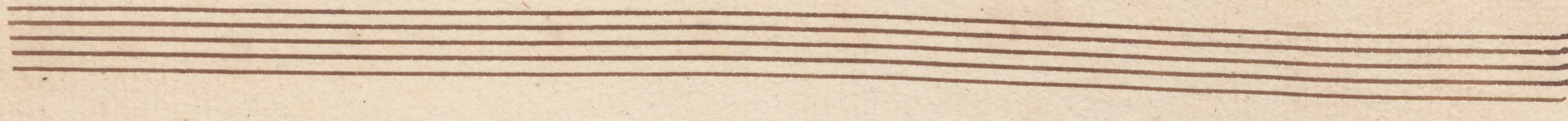
pas-tus est pas sus et se - pas



- - - - - tus et se - pas



- - - - - tus est.



Alto 2.

Crucifixus für acht Stimmen v. Ant. Lotti
herausgegeben v. A. B. Marx

Largo assai E^b C

1 2 3
Barro Cruci - fi

4 5 6 7 8
Alto 2
Cruci - fi - nus cru -

9 10 11 12 13
ci - fi - nus cru - ci - fi - nus

14 15
e - ti - am pro no - bis e - ti - am pro

16 17 18
no - bis sub ponti - o pi -

19 20 21
la - to sub ponti - o pi - la - to

22 23 24 25 26
pas - sus sub ponti - o pi -

27 28 29 30
to pas - sus et

WB

Handwritten musical score on three staves. The first staff contains the melody with lyrics: "se-poul-tus est pas-sus et se-poul-". The second staff continues the melody with lyrics: "tus et se-poul-tus". The third staff begins with the word "est." and contains a single note. The score includes dynamic markings "forte" and "piano", and measure numbers 31 through 41. The paper is aged and shows some staining.

Seven empty musical staves, each consisting of five horizontal lines, arranged vertically on the page.

Tenore 2.



Crucifixus für acht Stimmen o. Ant. Lotti
herausgegeben v. A. B. Marx

Largo assai Bb C p Basso Cruci fi Cruci Tenore 2. Cruci

1 2 3

4 5 6 7 8

9 10 11 12

13 14

15 16 17 18

19 20 21

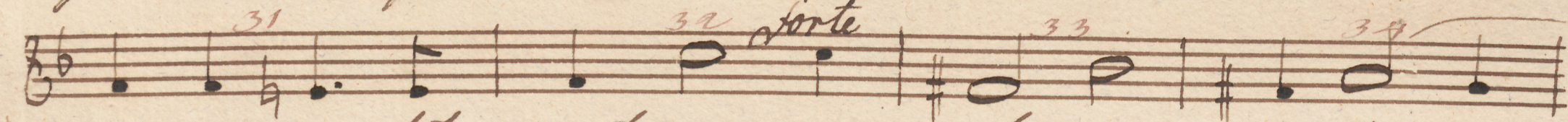
22 23 24

25 26 27

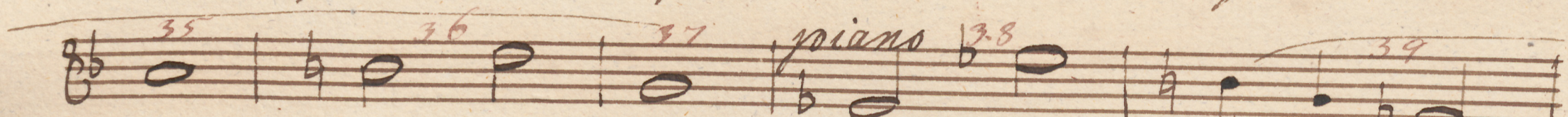
fi - - - - - us
 cruci - fi - - - - - us cruci - fi - us
 e - ti am pro no - bis cruci - fi - us
 e - ti - am pro no - bis
 sub ponti - o pi - lato sub ponti - o pi
 lato sub ponti - o pi - la - to
 sub ponti - o pi - la - to sub



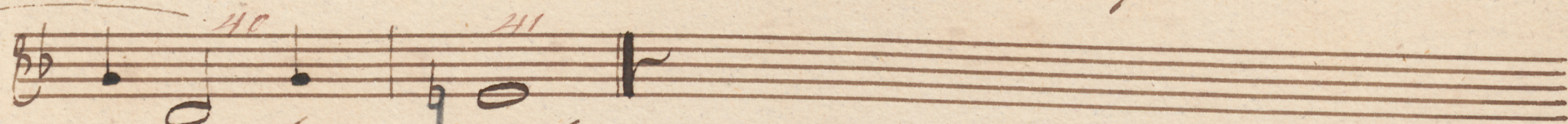
pro-
nunti- o pi- la- to pas- sus et



se- pul- tus est pas- sus et se pul-
tus et se pul-



tus et se pul-



tus est.





Basso 2.

*Crucifixus für acht Stimmen v. Ant. Lotti
herausgegeben v. et. B. Marx*

Largo assai

Cruci - fi -
 xus cru - ci - fi -
 xus crucifixus e - ti - am pro
 no - bis cru - ci - fi - xus crucifixus e - ti - am pro
 no - bis sub ponti - o pi -
 la - to sub ponti - o pi - la - to
 2
 pas - sus pas - sus et se

31 32 *forte* 33 34 35 36
 37 *piano* 38 39 40 41
 youl-tus est passus et se-pul-
 tus et se-pul- tus est.

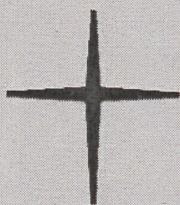
Empty musical staves for accompaniment.

MU 093 VIII-19

A. Lotti, Crucifixus à 8



Schloßkirchen-
Gemeinde



**Ev.-Luth. Schloßkirchengemeinde
Schwerin**

Evangelisch-Lutherischer
Kirchenkreis Mecklenburg

Depositum in der Bibliothek des
Landeskirchenamts Schwerin
<https://nordkirche.bibliotheca-open.de/>

