


**Exultate Deo adjutori nostro: a quattro due Tenori e due Bassi con Organo :  
Schloßkirchengemeinde Schwerin, MU 094-8**

<http://purl.uni-rostock.de/rosdok/ppn1774595214>

Musikhandschrift Freier  Zugang





*Exultate Deo adiutori nostro*

*a quattro due Tenori e due Bassi*

*con Organo*

*di G. A. Ferretti.*

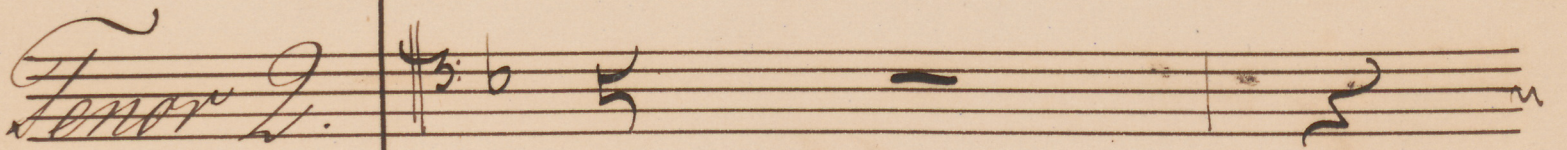
146




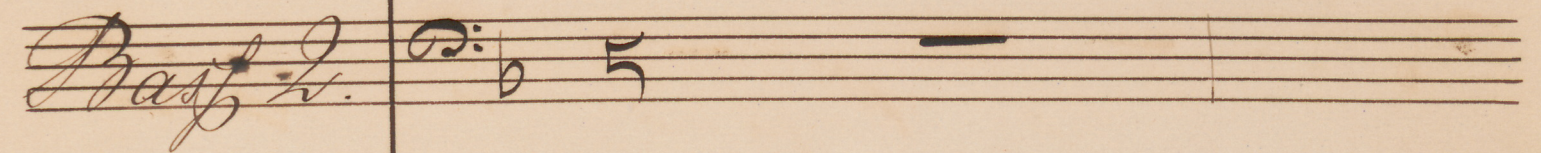
2.)

Tenor 1. 

Exul-tate Deo

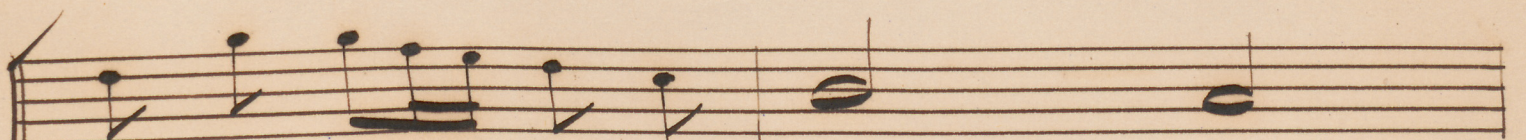
Tenor 2. 

Bass 1. 

Bass 2. 

Organo. 

Empty musical staves.

adjuto — — ri no — — 

adjuto — — ri no — —

exul-tate Deo adjuto — ri 

exul-tate Deo adjuto — ri

Empty musical staves.

Empty musical staves.

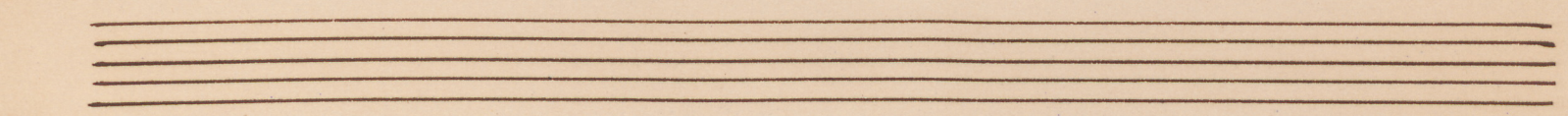
Empty musical staves.

4 3 6 6 3 5 3

stro  
no - stro  
exul - tate Deo adju -  
exul -

ju - bi -  
to - ri no - stro  
fa - te Deo adju - to - ri nostro

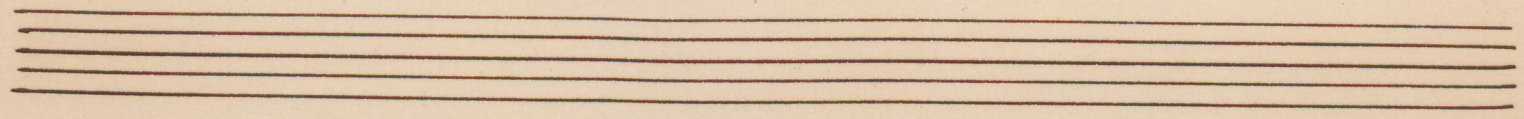
Handwritten musical score for the first system, featuring six staves. The top five staves contain vocal lines with lyrics: "jubi-late jubi-late jubi late jubi-late jubi jubi-late ju-bi-la jubi-late ju-bi-late". The bottom staff is a basso continuo line with figured bass notation: 3, 6, 3, 6.



Handwritten musical score for the second system, featuring six staves. The top five staves contain vocal lines with lyrics: "late Deo Ya-cob late De-o Ya-cob te Deo Ya-cob jubilate Deo Ya-cob". The bottom staff is a basso continuo line with figured bass notation: 5, 6, 4, 3, 6, 5.

sumite  
 sumite psalmum  
 sumite psalmum et date  
 sumite psalmum et date tympanum

43      10  
98      6  
5



psalmum et date tympanum  
 et date tympanum  
 tympanum et date tympanum  
 et date tympanum psalterium ju

5  
43      47      46

6.)

psalterium ju  
psalterium ju eundum cum  
eundum cum cithara

4 3

eundum cum cithara ju  
psalterium ju eun - dum cum  
cithara ju  
ju

5 4 6

Handwritten musical score for the first system, featuring five staves. The top two staves are vocal parts with lyrics: "dum iucum", "cithara iucum", and "dum iucum". The bottom three staves are instrumental parts, with the bottom-most staff containing figured bass notation: 7 6 7 6 7 b5 5 4 3.

Handwritten musical score for the second system, featuring five staves. The top two staves are vocal parts with lyrics: "dum cum cithara - ra", "eundum", and "buccina". The bottom three staves are instrumental parts, with the bottom-most staff containing figured bass notation: 5 3 6 4.

(8.)

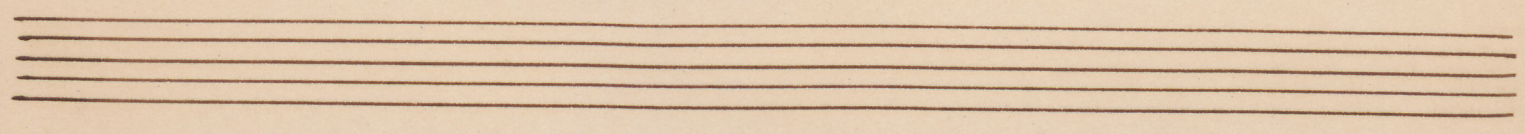
Handwritten musical score for the first system. It consists of four staves. The top two staves are vocal parts with lyrics: *buccina — te* and *de in Neo — me — ni — a*. The bottom two staves are a basso continuo line with figured bass notation, including figures like 6 and 6. The music is in a minor key and 4/4 time.

Two empty musical staves, likely for a second system of music.

Handwritten musical score for the second system. It consists of four staves. The top two staves are vocal parts with lyrics: *in Neo — menia* and *te — ba*. The bottom two staves are a basso continuo line with figured bass notation, including figures like 6 and 6. The music continues in the same style as the first system.

Handwritten musical score for the first system, featuring two vocal parts and a basso continuo line. The lyrics are: *te — ba in in,, in in-si-gni die in in,, in in-si-gni die.*

The first system consists of five staves. The top two staves are vocal parts in G major (one G-clef, one C-clef). The third and fourth staves are vocal parts in C major (both C-clefs). The bottom staff is a basso continuo line with figured bass notation: 4, 3, 4/6, #3, 4, 6.



Handwritten musical score for the second system, featuring two vocal parts and a basso continuo line. The lyrics are: *signi die so-lemni- ta signi die*

The second system consists of five staves. The top two staves are vocal parts in G major. The third and fourth staves are vocal parts in C major. The bottom staff is a basso continuo line with figured bass notation: 4/6, #3, 4, 6, 3, 6.

10)

Handwritten musical score for the first system. It consists of five staves. The top staff is a vocal line with lyrics "fa" and "fis". The second staff is another vocal line with lyrics "dis" and "ve". The third and fourth staves are vocal lines with lyrics "so-lemni", "fa", and "fis". The fifth staff is a basso continuo line with figured bass notation: 3 6, 7 4, 9, 6. The key signature is one flat (B-flat) and the time signature is common time (C).

Handwritten musical score for the second system. It consists of six staves. The first staff is a vocal line with lyrics "vestre". The second staff is another vocal line with lyrics "stre". The third staff is a vocal line with lyrics "vestre" and "exul - fa - te". The fourth staff is a vocal line with lyrics "ve - stre". The fifth staff is a basso continuo line with figured bass notation: 4 3, 6. The key signature is one flat (B-flat) and the time signature is common time (C).

Deo adju-to-ri no-stro  
 exul-ta-te Deo adju-to-ri

443 6 46 3 6 5 4

exul-ta-te De-o adju  
 exul  
 jubi-late Deo ju  
 nostro

665

4o — ri nostro ju — bilate  
 ta — te Deo adju — ri nostro  
 bila — te Deo Jacōb ju — bi  
 ju — bilate De —

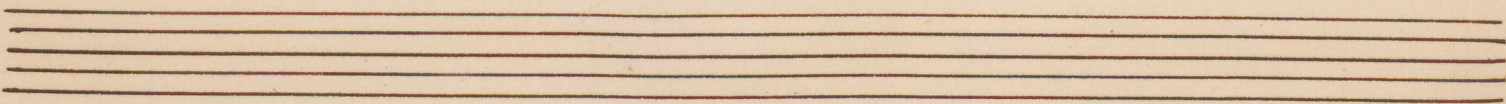
4 3    6 6    4 3    6 5 / 4 3

De — o Jacōb sumite  
 ju — bilate Deo Jacōb  
 late Deo Ta — cōb  
 o Jacōb

6 5    7    3    5 / 4 3

psalmum et date tympanum  
 sumite psalmum et date tympanum  
 sumite psalmum et date  
 sumite psalmum

5  
4 3      5  
4      6      4 # 3



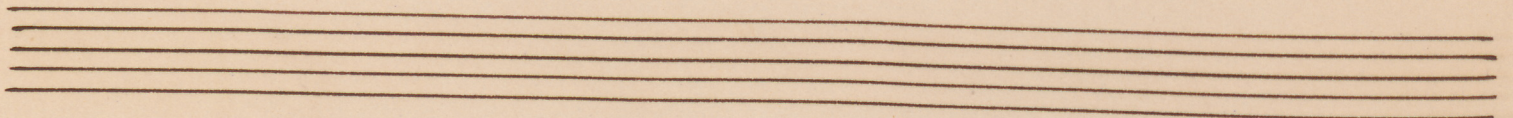
tympanum psalterium iocundum  
 et date tympanum psal-

# 3      4 6 3

(14.)

psalterium ju-  
 dum cum cithara  
 terium jucun — dum cum

3 — — — 3 6



psalterium jucun — dum cum  
 cum — dum cum cithara  
 psalterium ju-  
 cithara

3 3 4 5 6  
8 2 3 4 b3 5 6

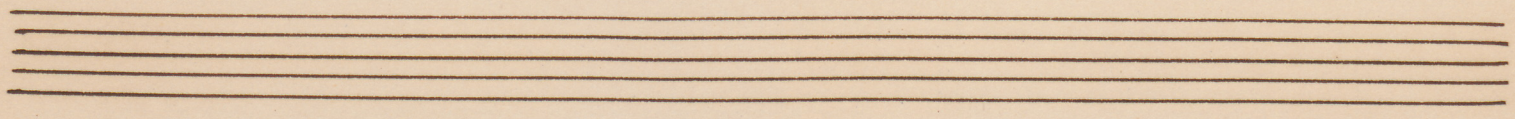
*cithara* *juēun*

*juēun*

*eundum cum cithara*

*juēun*

$b \frac{3}{4} 3$   $\frac{5}{4} 3$   $\frac{10}{9} 8$   $\frac{4}{2}$



*dum juēun*

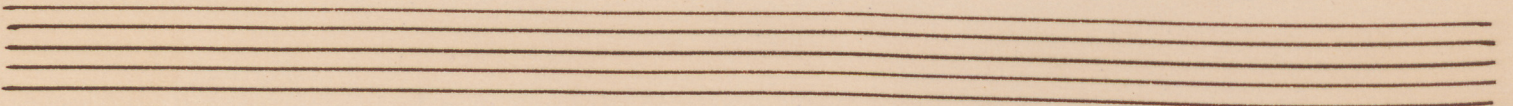
*dum*

*juēun*

*dum juēun*

$\frac{4}{2}$   $\frac{4}{2}$   $6$   $\frac{7}{6}$   $76$

Handwritten musical score for five voices. The score is written on five staves. The first staff is in treble clef with a key signature of one flat (B-flat). The second and third staves are in alto clef. The fourth and fifth staves are in bass clef. The lyrics are written in cursive below the staves: "dum cum iſtha" (top staff), "cum iſtha" (second staff), "dum cum iſtha" (third staff), and "dum cum iſtha" (fourth staff). The fifth staff contains rhythmic markings: 76, 76, 43, 43.



Handwritten musical score for five voices. The score is written on five staves. The lyrics are written in cursive below the staves: "ra buccina - se" (top staff), "ra" (second staff), "ra" (third staff), "ra" (fourth staff), and "buccina" (fifth staff). The notation includes various note values and rests.

*in Neo-me-ni-a tu*

*te*

5 3 4 2 3 8 4 2 3 6 4 5 3 4 2 5 3

*ba*

*in Neomenia tu*

3 6 3 6 3 3

18.)

in insigni die

in insig-ni die

ba in insigni

6 4 4 5 3 3 6 4 4 5 3

so-lemni - ta-tis ve

die so-lemni

6 5 6

stre so-lem-ni - ta - tis

so-lem-ni - ta - tis ve -

ta-tis solem - ni ta - tis

so-lemni ta - tis

56 7 3

ve - stre so - lem -

stre

ve - stre so - lemni

543 6 6 6

Handwritten musical score for a vocal ensemble. The score consists of five staves. The first staff is the vocal line with lyrics: *mni ta tis ve*. The second staff has lyrics: *solemni ta tis*. The third staff has lyrics: *ta tis*. The bottom staff contains fingerings: 6, 4, 6, 3, 3, 3, 4, 3.

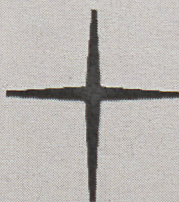
Handwritten musical score for a string ensemble. The score consists of six staves. The lyrics are: *ve*, *ve*, *ve*. The bottom staff contains fingerings: 5, 4, 3, 2, 3.

MU 094-8

G. A. Perotti, Exultate Deo



Schloßkirchen-  
Gemeinde



**Ev.-Luth. Schloßkirchengemeinde  
Schwerin**

Evangelisch-Lutherischer  
Kirchenkreis Mecklenburg

Depositum in der Bibliothek des  
Landeskirchenamts Schwerin  
<https://nordkirche.bibliotheca-open.de/>

