


## **Wisch ab der Tränen scharfe Lauge : Schloßkirchengemeinde Schwerin, MU 097 II-3**

<http://purl.uni-rostock.de/rosdok/ppn1775320758>

Musikhandschrift Freier  Zugang



# Choral tacet.

*Larghetto.*

Violino I. II.

Oboe I. II.

Tochter Zion.

Pianoforte  
*mp.*

Bassi.

*con sva*

*Oboe solo.*

*Pianoforte ad libit.*

*Wiß' ob der Yrri- und scharfe Lüngen, Auf; sel'ge Dun-ke, um in Riß; Auf;*

*sel'ge Dun-ke, um in Riß! Wiß' ob der Yrri - und scharfe Lüngen, Auf; sel'ge*

Handwritten musical score for vocal and piano parts. The vocal line is in a soprano clef with a key signature of two flats. The piano accompaniment is in a bass clef. The lyrics are written in cursive below the vocal line.

*Don-ke, fol'-ge Don* *ke, fol'-ge Don-ke, mit in*

Handwritten musical score for Violin I and II parts. The Violin I part is in a soprano clef, and the Violin II part is in an alto clef. The score includes dynamic markings such as *p.* and *mp.* and the instruction *Ruf!*.

*Ruf!* *Wiss' ab der Frömmen Pfaffen Loh'-ge, Ruf, folge*

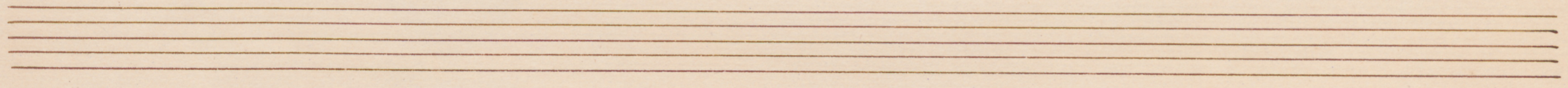
Handwritten musical score for the first system. It consists of four staves. The top two staves are for the vocal line, and the bottom two are for the piano accompaniment. The music is in a key with one sharp (F#) and a common time signature. The lyrics are written in cursive below the vocal line.

*Præ-lu-mi-ni-um in Rief'* *Auf'mi-ni-um in Rief'* *Auf'mi-ni-um in Rief'* *Auf'spul-gen*

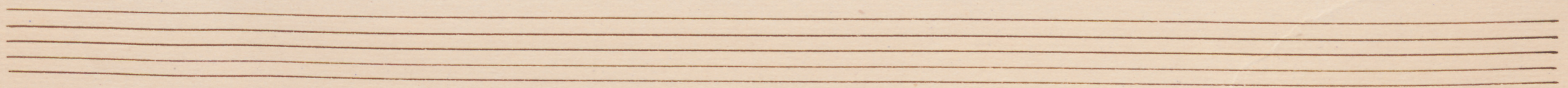
Handwritten musical score for the second system, continuing the vocal and piano parts from the first system. It consists of four staves. The lyrics are written in cursive below the vocal line.

*Præ-lu-sul-gen Præ-lu-mi-ni-um in Rief'* *Auf'mi-ni-um in Rief'*

Handwritten musical score for the first system, featuring five staves. The top staff contains a treble clef, a key signature of one sharp (F#), and a common time signature (C). The music consists of several measures with notes and rests. The second and third staves contain more complex musical notation, including beams and slurs. The fourth staff contains the lyrics: *Bliff'el du Yvri - unu sefer - In Loui - yn, Auf 'pul' yn Pnn - lu, unu in*. The fifth staff continues the musical notation.



Handwritten musical score for the second system, featuring five staves. The top staff contains a treble clef, a key signature of one sharp (F#), and a common time signature (C). The music consists of several measures with notes and rests. The second and third staves contain more complex musical notation, including beams and slurs. The fourth staff contains the lyrics: *Püsi' Auf 'pul' yn Pnn - lu,*. The fifth staff continues the musical notation.



*Tutti*

*Auf, sal-ge Du-er-ten in Ruf!*

*mf.*

This system contains five staves of handwritten musical notation. The top two staves are vocal parts, and the bottom three are piano accompaniment. The music is in a common time signature and includes various rhythmic values and dynamic markings.

*Ob. I.*

*Ob. II*

This system contains five staves of handwritten musical notation. The top two staves are for woodwinds (labeled *Ob. I.* and *Ob. II.*), and the bottom three are piano accompaniment. The notation includes complex rhythmic patterns and articulation marks.

*con 8<sup>va</sup>.*

*Fine*

*Dieu und zu Sparr-ten Alru und zu*

*mp. senza Rca*

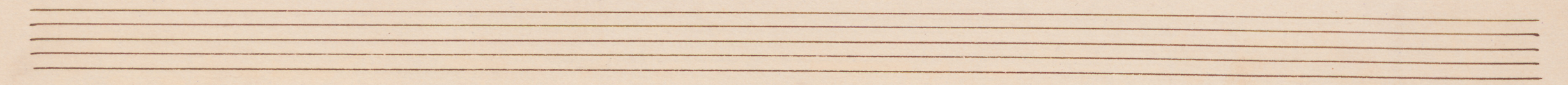
*Fine.*

*unpflob-ten Alu-ye Sparrat die den Himmul wuch, und pfliuht die Göl-ten*

*p*

zu; sein müd' aufzuheben Arm und sein aufsteh-ten

*basso con 8<sup>va</sup> sempre.*



Augen hebet die zum Himmel auf, und schenke die Höl-ten zu.

*Da Capo.*

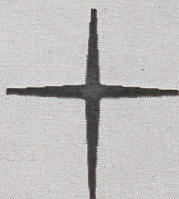
Choral tacet.

MU 097 II-3

G. F. Händel, Wisch ab der Tränen scharfe  
Lauge



Schloßkirchen-  
Gemeinde



**Ev.-Luth. Schloßkirchengemeinde  
Schwerin**

Evangelisch-Lutherischer  
Kirchenkreis Mecklenburg

Depositum in der Bibliothek des  
Landeskirchenamts Schwerin  
<https://nordkirche.bibliotheca-open.de/>

