


**Sammelmappe: Ad Dominum cum tribularer. Dixit Maria ad angelum :
Schloßkirchengemeinde Schwerin, MU 093 IV-111, MU 093 V-17**

<http://purl.uni-rostock.de/rosdok/ppn1784565970>

Musikhandschrift Freier  Zugang





I. Motetto: Ad Dominum cum
tribularet "[Ps. 120]"

5 vocum

von
Hans Leo von Hassler.

1601.
II. Dixit Maria ad angelum

4. vocum
Joanne Leone Hassler

Im Juni 1891.

Grossherzogf. Schlosschor



100.

I. Psalm 120
(5 vocum)

v. Leo Haster.

Cantus *5*

Altus *4*

Tenore. *p crescendo*

Ad Domi-num cum tribu-la - rer elama - - - vi ad

Quinta *3*
voc.

Bassus. *2*

Ad Dominum cum tribula-



Empty musical staff with a diagonal slash.

6 7 8 9 10

Empty musical staff with the word "Ad" written below it.

Empty musical staff.

Musical staff with notes and lyrics: Domi-num - cum tribu-la - - - rer elama - - - vi cum

Musical staff with notes and lyrics: Ad Domi-num cum tribu-la - - rer elama - - - vi -

Musical staff with notes and lyrics: - rer elama - - - vi cum tribu-la - rer cla - ma - vi ad

Musical staff with notes and lyrics: - rer elama - - - vi cum tribu-la - rer cla - ma - vi ad

11.

12.

13

14

Dominum cum tribula - - rerclama - - - - -
 Ad Domi - num cum tribu -
 tribula rerclama - - - - - vi
 cum tri - bu - - la - - rer
 Dominum cum tribula - - rer

15

16.

17.

18

vi clama - - vi cum tribu - la - rer cla - ma vi clama -
 la rer cla - ma - - - - - vi cla - ma vi Ad
 ad Domi num cum tribula - - rer cla - ma - -
 Ad Domi -

19.

20.

21.

22.

vi ad Dominum cum tribu-la-
 Domi-num cum tri- bu-larer cla-ma-vi
 vi ad Domi-num cum tribu-la-
 num cum tribu-la-rer cla-ma-vi clama-

23

24

25.

26.

rer clama-vi clama-vi clama-
 cum tribu-la-rer cum tribu-larer clama-
 Ad Domi-num cum tribu-la-rer clama-
 rer cum tribu-la-rer clama-vi et
 vi clama-vi cum tribu-la-rer clama-

27.

28

29

30

vi et ex - - - au -

vi et ex - - - au -

vi et

ex - - - au - di - vit me

vi et ex - - - au - di - vit me



31.

32.

33.

34

- di vit me et ex - - - au -

- di vit me et ex - - - au - di vit

ex - - - au - di vit me et ex -

et ex - - - au di - - - vit me

et ex - - - au di - vit me - - - et

35-

36-

37-

38.

Handwritten musical score for measures 35-38. The score consists of five staves. The lyrics are written below the notes.

di - - - vit me Do - - - mi - ne li - bera
 me et ex au - di vit me Domine libera a -
 - - - au - di vit me Domine libera a -
 et ex - audi vit me
 ex - - audi vit me

39-

40-

41-

42.

Handwritten musical score for measures 39-42. The score consists of five staves. The lyrics are written below the notes.

animam me - am a labi - is in i - - - - quis Do -
 - nimamme - am a labi - is in i - quis Do -
 - niam me - am a labi - is in i - - - - quis Do -
 Do -
 Do -

Handwritten musical score for five systems. Each system consists of a vocal line and a piano accompaniment line. The lyrics are: mine li-be-ra animam me-am a la-bi-is ini-

Handwritten musical score for five systems, measures 47-50. Each system consists of a vocal line and a piano accompaniment line. The lyrics are: quis in-i-quis et a lingua do-lo-sa i-quis et a lingua do- quis a labiis in-i-quis et a lingua do- quis in-i-quis in-i-quis

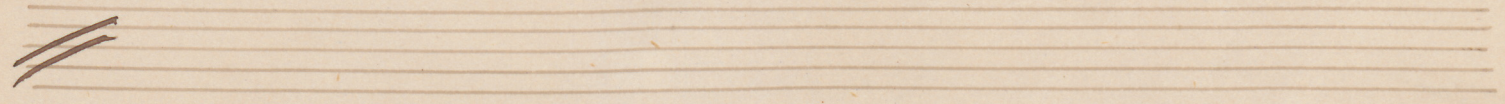
51-

52-

53-

54

a lingua do-lo-sa et a lingua dolo-sa
 et a lingua do-lo-sa et a lin-
 - - - sa et a lin-gua dolo - -
 lo-sa et a lingua dolo - - - - sa a lingua
 et



55-

56-

57-

58-

et a lingua dolo-sa do-lo-sa
 qua do-lo-sa et a lingua dolo-sa et a lingua do-
 - - sa et a lingua dolo-sa et a lingua do-
 - dolo-sa et a lingua do-lo-sa
 a lingua do-lo-sa et a lin-

59. 60. 61. 62.

sa et a lingua do- lo - - -
losa et a lin- gua do- lo - sa et a. lin-
losa et a lin- gua do- lo - - - sa et a lingua do -
et a lin- gua do- lo - sa et a lin- gua do- lo - - -
qua do- lo - sa a lingua do- lo - sa

63. 64. 65. 66. 67.

sa do- lo - - - sa et a lingua do- lo - sa.
gua do- lo - - - sa et a lin- gua do- lo - sa.
lo - sa do- lo - - sa et a lin- gua do- lo - sa.
sa et a lin- gua do- lo - sa do- lo - sa.
et a lingua do- lo - sa.

II. Motetto.

Hans Leo Hasler.

Invocum.

1. 2. 3. 4. 5.

Cantus.

Altus.

Tenore.

gelum ad An

Bassus.



6. 7. 8. 9. 10.

ri-a ad An gelum, ad An ge lum Di-

gelum dixit Ma-ri-a ad An gelum, di-

gelum dixit Mari a ad Angelum Di-

Di-xit Ma-ri-a ad An gelum

11. 12. 13. 14.

xit Mari - a ad An - ge - lum Di -

xit Mari - a ad Angelum - Di -

xit Mari - a ad An - ge - lum ad Ange -

Di - xit Mari - a ad An -

15. 16. 17. 18.

xit Mari - a ad An - ge lum ad An -

xit Mari - a - ad An - gelum dixit -

lum Di - xit Mari - a ad An -

ge lum di -

19

20.

21.

22.

— ge lum ad An — ge lum Ec —
 — Mari — a ad Ange — lum ad Ange — lum Ec —
 — ge lum — ad An — ge lum Ec —
 — rit Mari — a ad An — ge lum Ec —

23

24

25.

26.

— ce ancilla Do — mi — ni Ec —
 — ce ancilla Do — mi — ni Ec —
 — ce an — cil — la Do — mi — ni Ec —
 — ce ancilla Do — mi — ni Ec —

27. 28. 29. 30.

ce ancilla Domini fi
 ce ancilla Domini fi
 ce ancilla Domini fi
 ce ancilla Domini

31. 32. 33. 34.

at mihi secundum verbum
 at mihi fiat mihi secundum verbum tu
 at mihi secundum verbum
 fi at mihi

35. 36. 37. 38.

tum
 - um - se - eundum verbum tu - um se - eundum verbum
 tuum se - eundum verbum tu - um ver - bum tu -
 se eundum verbum tuum se eundum verbum

39. 40. 41. 42.

se eundum verbum tu - um se eundum verbum tu -
 tu - um se - eundum ver - bum tu -
 - um se eundum verbum tu - um se eundum verbum tu -
 tu - um se - eun - dum verbum

43.	44.	45.	46.
um	Ee	ce	an-cilla Do-
um	Ee	ce	an-cilla Do-
um	Ee - ce	ancil-	la Do-
tu - um	Ee	ce	an-cilla Do-

47.	48.	49.	50.
mini	Ee	ce	an-cilla Do-
mini	Ee	ce	an-cilla Do-
mini	Ee - ce	an - cil -	la Do -
mini	Ee	ce	an-cilla Do-

51. 52. 53. 54.

mini fi at mi hi

mini fi at mi hi fiat mi

mini fi at mi

mini fi at mi

55. 56. 57. 58.

secundum verbum tu-um

hi secundum verbum tu-um secundum verbum tu-

hi secundum verbum tu-um secundum verbum tu-

hi secundum verbum tu-

59.

60.

61.

62.

63

se - eundum verbum tuum se - eundum verbum -
 um se eundum verbum tu ————— um se eundum ver - bum
 um verbum tu - um se - eundum verbum tuum se - eundum verbum
 - um se eundum verbum tu ————— um se - eun - dum ver -

64

65.

66.

67

68

— tu — um ————— secundum verbum tu - um .
 tu - um ————— secundum ver - bum tu — um .
 tu — um ————— secundum verbum tu - um .
 bum tu - um secundum ver ————— bum tu - um .



I. Psalm 120.

Sopran.¹⁷
v. Leo Hasler.

crescendo

Ad Do-mi-num eum tribu-la-rer ela-ma

vi ad Dominum — Dominum eum tribula-

rer elam

Sopran.

Ad Do-mi-num eum

tribu-la-rer elama

-vi elama — vi eum tribu-la-rer ela-

-ma vi elama- vi ad

Domi-num eum tribu-la-rer elama

vi elama — vi elama

-vi et ex

au-divit me et

ex au-

Sopran.

di vit me Do mi
 ne libera animam me-am a labi-
 is in-i quis Do-mine libe-
 ra animam me am a la-bi-
 is i-ni quis in-
 i quis et
 a lingua do-lo-sa et a lingua do-lo-sa
 et a lingua do-lo-sa do-
 lo-sa et a lingua do-
 lo-sa do-lo-sa
 et a lin-gua do-lo-sa

II. Motetto, Sopran.

Hans Leo Hasler.

Tenor 1.

2.

Alt. 3.

4.

Di-xit Ma-ri-a ad Di-xit Mari-a ad

Di-xit Ma-ri-a ad An

gelum ad An gelum Di-

-xit Mari-a ad An ge-

-lum Di-xit Mari-a ad An-

gelum ad An ge-

-lum ad An ge-lum Ec-

-ce ancilla Domi-ni Ec-

-ce ancilla Domi-ni fi-

-at mi hi se-

eundum verbum tuum eundem verbum fa-

Sopran.

37 38 Sopran. 39
 um ver - bam tu se - cundum

40 41 42
 verbum tu - um se cundum verbum tu -

43 44 45
 um Ec - ce an -

46 47 48
 - cilla Do - mi - ni Ec -

49 50 51
 - ce an - cilla Do - mini

52 53
 fi - at mi

54 55 56
 hi se - cundum verbum tu -

57 Tenor 58 59
 - um verbum tu - um verbum

60 Sopran. 61 62
 tu - um se - cundum verbum tu - um se -

63 64 65
 - cundum verbum tu - um

secundum verbum tu - um.



I. Psalm 120.

Alt. ²¹
v. Leo Hasler.

Tenor I. 1 *crese.* 2 3 4

Ad Do mi - num cum tri bu - larer cla - ma

5 6 Tenor II 7 8

vi ad Do mi num — Do mi num cum tri bu la -

9 Sopran 10 11 12

rer clama — Ad Do mi num cum tri bu la -

Alt. 13 14 15

Ad Do mi - num cum tri bu - la - rer cla -

16 17 18

ma — vi cla ma vi Ad

19 20 21

Do mi - num cum tri — bu la - rer cla -

22 23 24

- ma - vi — cum tri - bu - larer

25 26 27

cum tri bu - larer clama - vi

Tenor I 28 Alt 29 30

au - di — et ex — au -

31 Tenor I 32 Alt. 33

- divit me — au - di — et ex —

34 35 36

— au - divit me et ex - au - divit me

Alt.

37 38 39

Domi - ne libe - ra a - ni - mam me

40 41 42

- am a labi - is in i - quis Do -

43 44 45

- mine li - be - ra a ni - mam me am a

46 47 48

labi - is in i - quis et a lingua do -

49 50 51

losa a lingua do - lo - sa et

52 53 54

a lingua do - lo - sa et a lin -

55 56 57

- qua do lo - sa et a lin - qua do lo -

58 59 60

- sa et a lingua losa et a lin -

61 62 63

- qua do lo - sa et a lin - qua do lo -

64 65

sa et a lin -

66 67

- qua do lo - sa.

Alt.

um — se — eundam verbum tuum se —
eundam verbum tu — um se —
eundam ver — bum tu — um Ee —
ce an — cilla Do — mi — ni
Ee — ce an — cilla Do —
mini fi — at mi — hi
fiat mi — hi secundum verbum tu —
um secundum verbum tu — um secundum
verbum tu — um secundum
ver — bum tu — um se eun — dum
ver — bum tu — um.



Psalm 120.

25
Tenor I.
v. Leo Hasler.

rescendo 2. 3. 4.

Ad Do-mi-num eum tribu-lar-er e-la-ma

vi ad Do-mi-num eum tribu-

la-rer e-la-vi eum

tribu-lar-er e-la-ma vi

num eum tribu-lar-er e-la Do-mi-num eum tribu-la-

rer e-la-ma vi ad Do-mi-

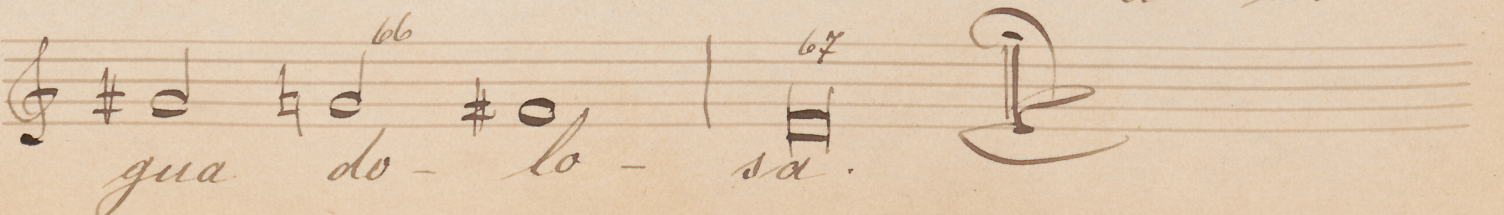
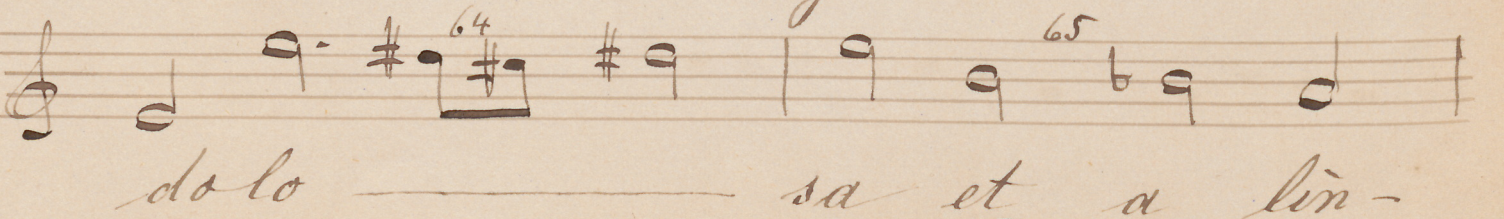
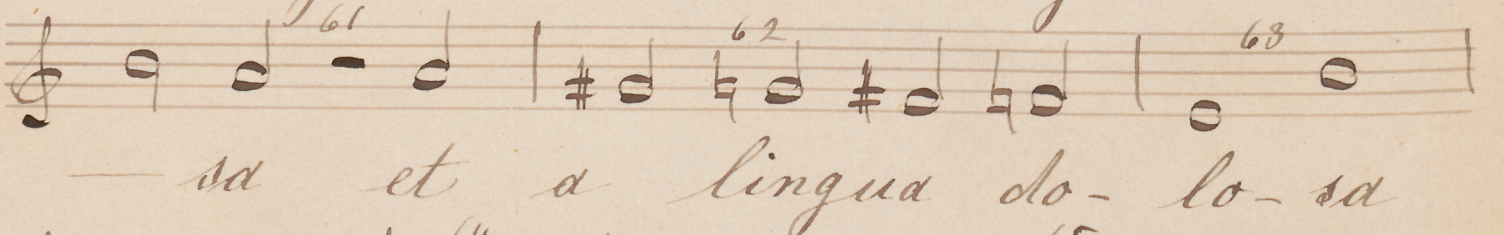
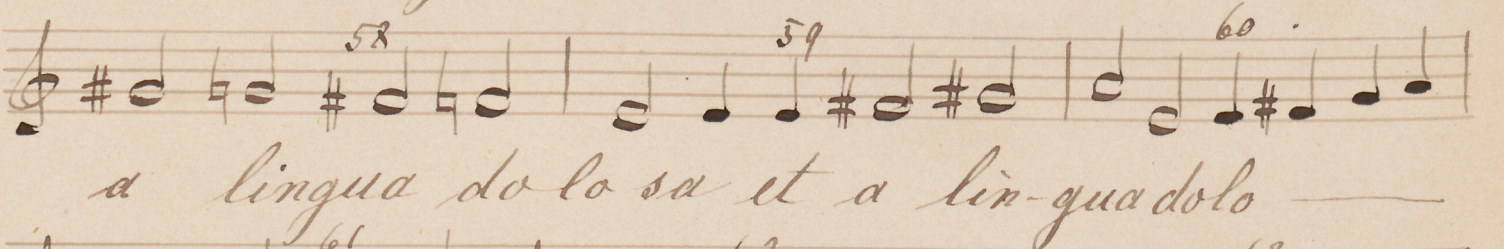
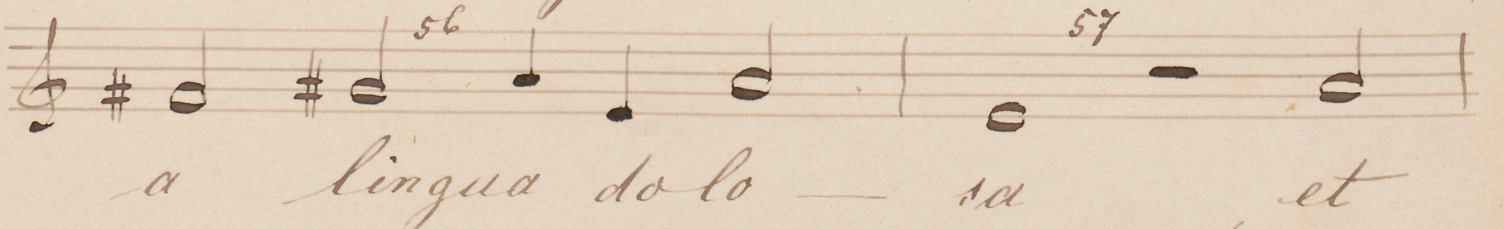
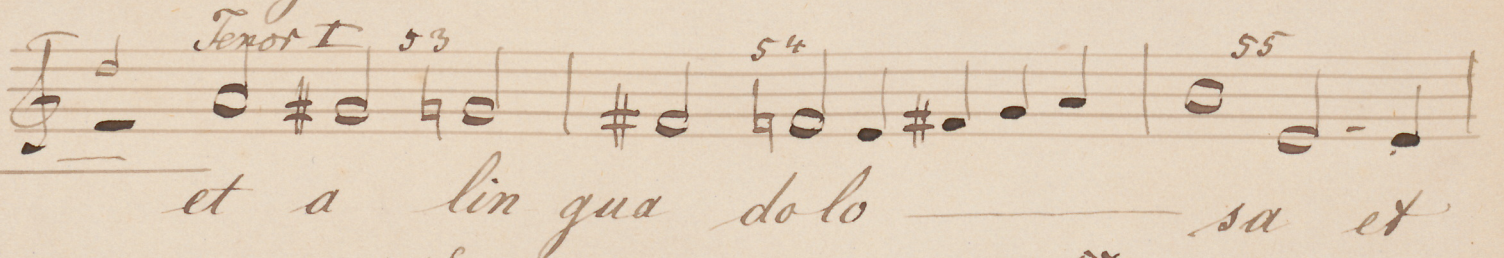
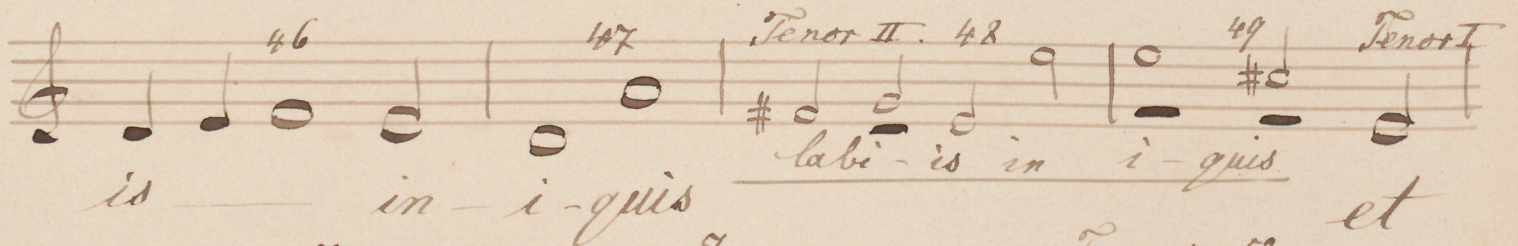
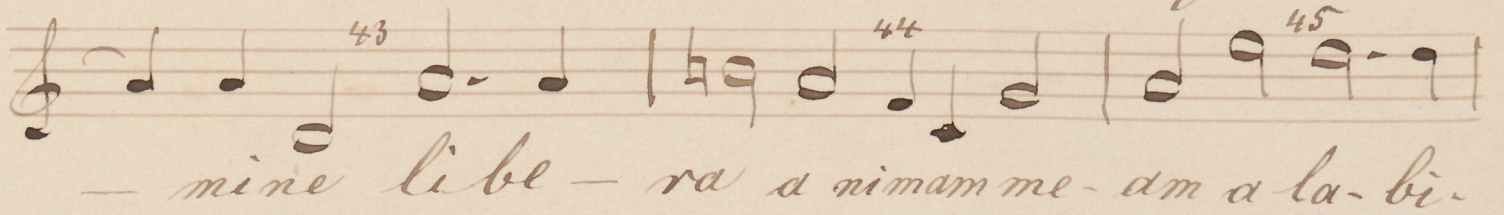
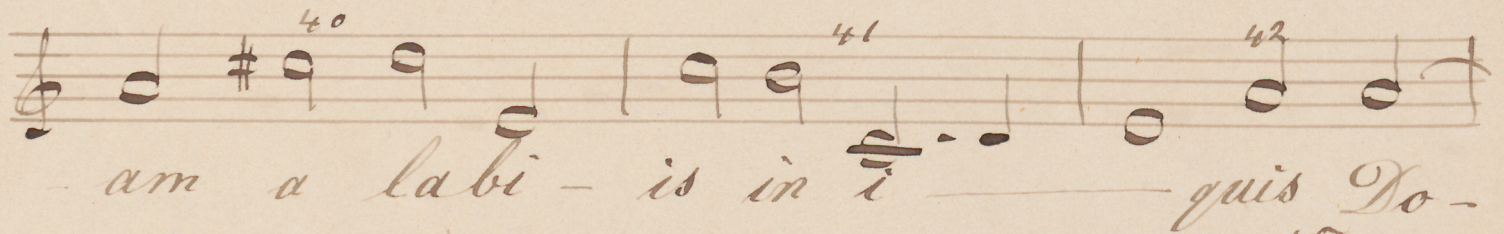
Do-mi-num eum tribu-la Ad Do-mi-num eum tribu-

la-rer e-la-ma vi ex

au ex et

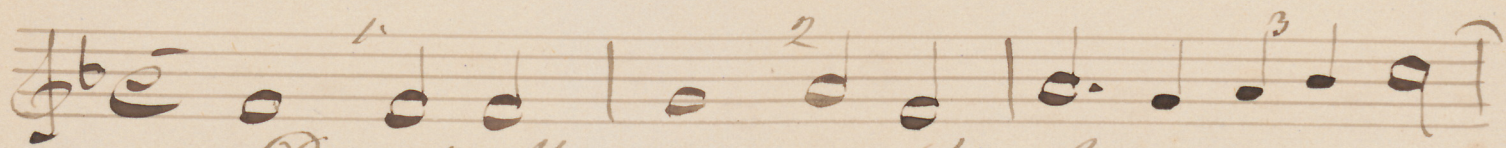
ex au-divit me

et ex au-divit me

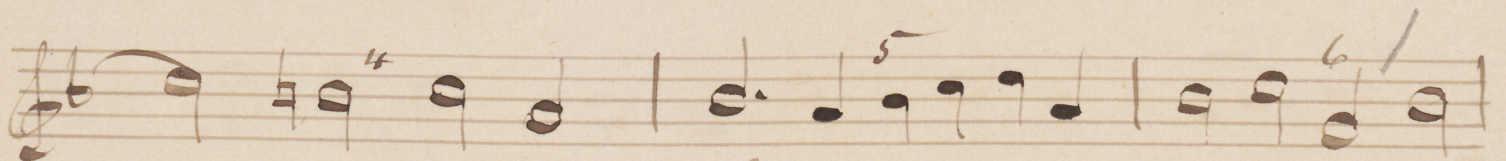
Tenor I.

II. Motetto, Tenore

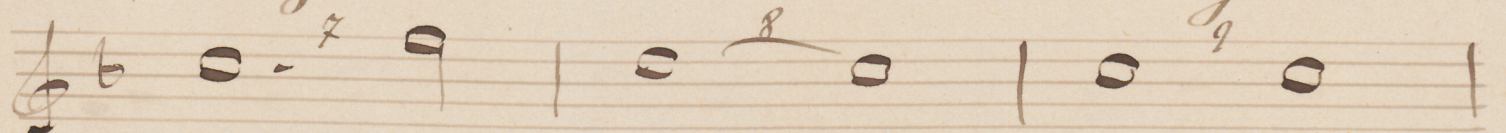
Hans Leo Hasler



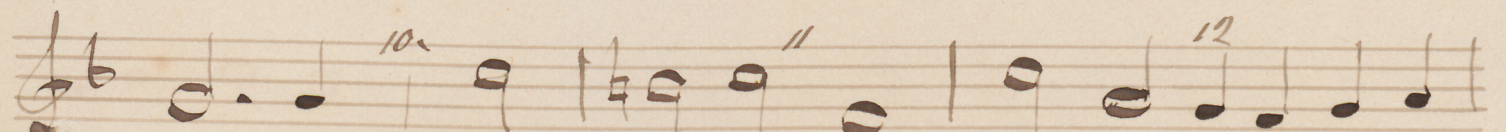
Dixit Ma - ri - a ad An



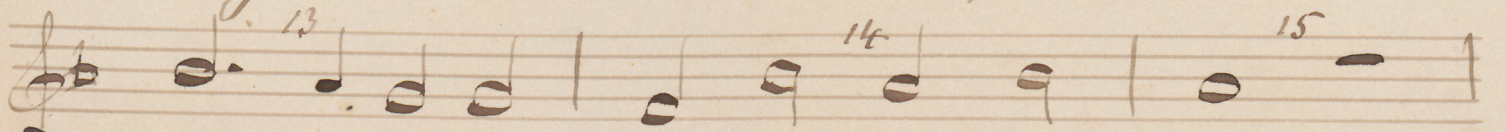
gelum ad An gelum di -



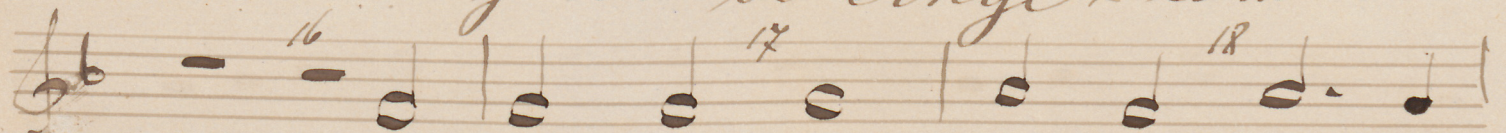
xit Ma - ri - a ad



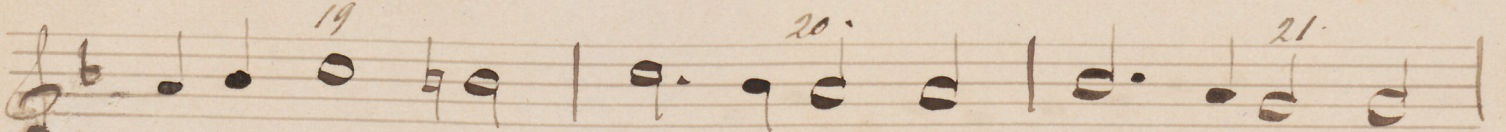
Angelum Di - xit Ma - ri - a ad An



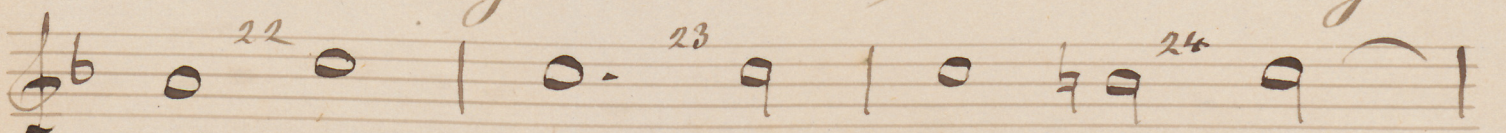
gelum ad Ange - lum



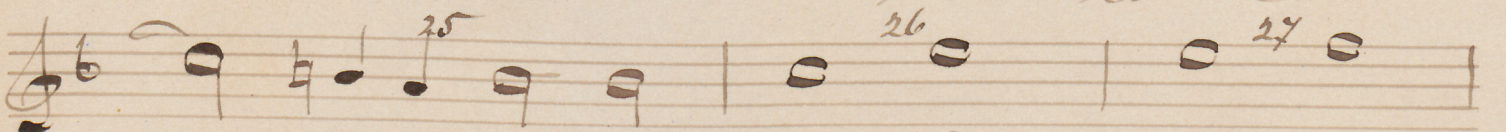
Dixit Ma - ri - a ad An



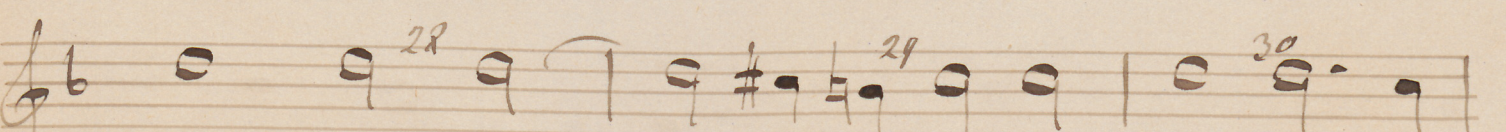
gelum ad An ge -



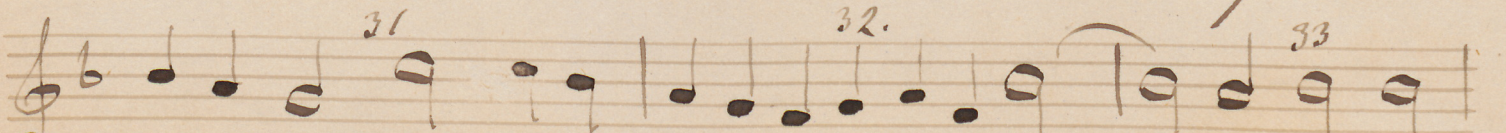
lum Ec - ce an - cil - la Do -



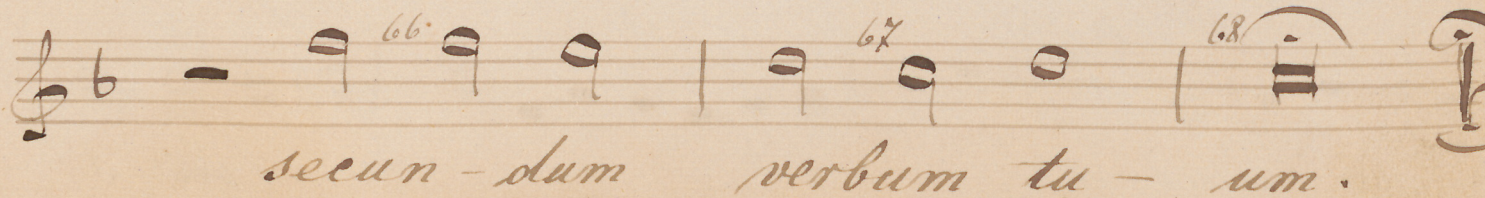
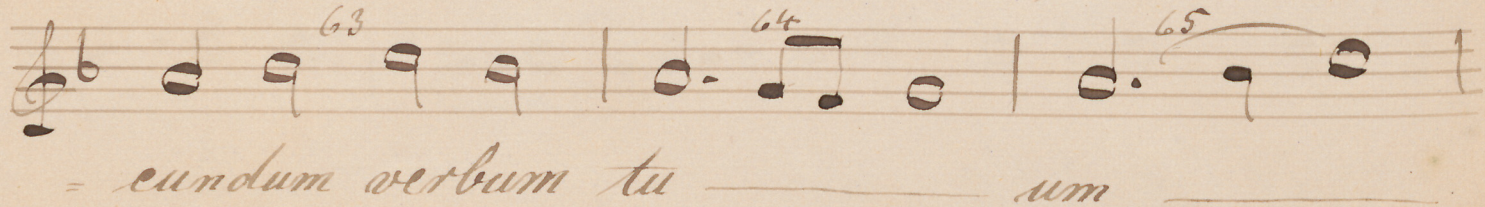
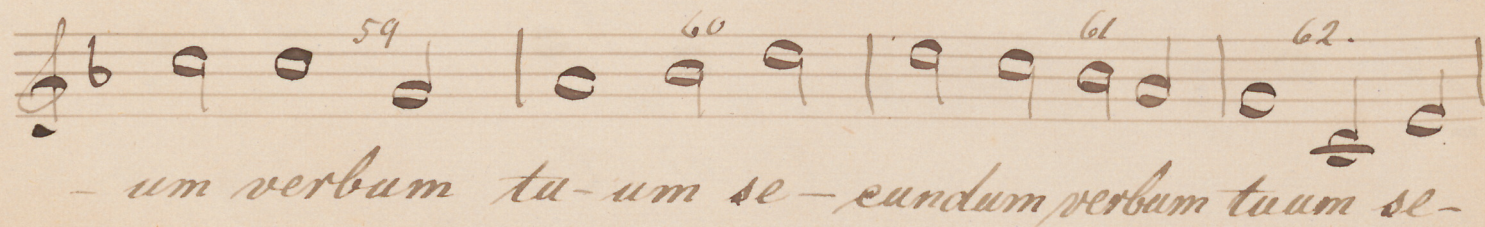
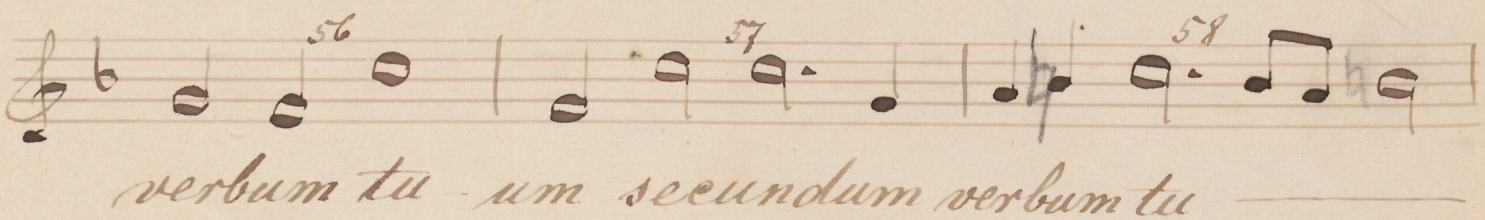
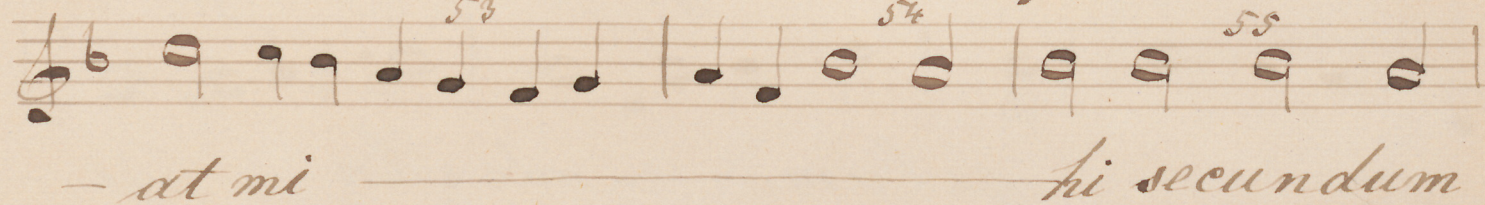
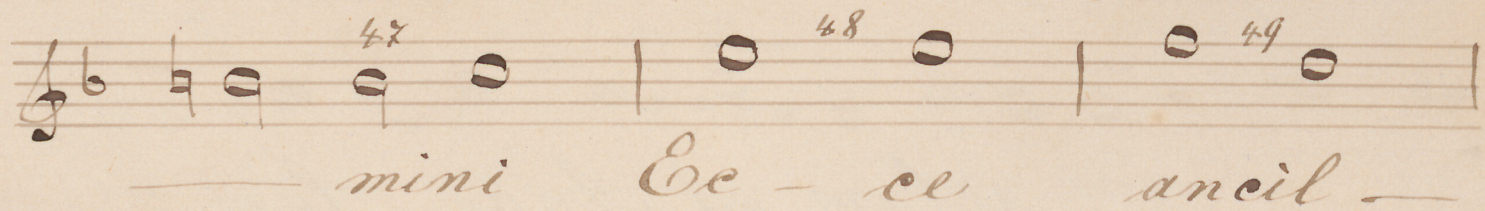
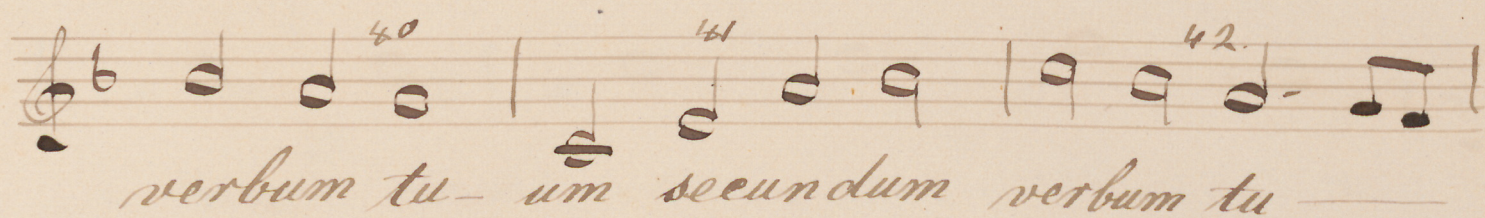
mi - ni Ec - ce an -



cilla Do mi ni fi



at mi hi se -

Tenor.



Palm 120.

Tenor II
v. Leo Hasler.

Tenor I *verse.* 1. 2. 3. 4.

Ad Do-mi-num eum tri-bu-la-rer cla-ma

5. *Tenor II.* 6. 7.

vi ad Do-mi- Ad Do-mi-num eum

8. 9. 10.

tri-bu-la-rer cla-ma vi

11. 12. 13. *Sopran* 14.

eum tri-bu-la-rer

15. *Tenor II* 16. 17.

vi cla ad Do-mi-num eum tri-bu-la-

18. 19. 20.

rer cla-ma vi ad Do-mi-

21. 22. 23.

num eum tri-bu-la-rer eum tri-bu-

24. 25. 26.

larer cla-ma-vi et

27. 28. 29.

ex au-di-vit me

Sopran. 30. 31. *Tenor II* 32.

au-di-vit me et ex-au-

33. 34. 35.

di-vit me et ex-au-

Tenor II.

36 *Tenor I.* 37 38 39
 di-vit me Domine libera a-nimam me-

40 *Tenor II*
 am a labi-is in quis. Do-

43 44 45
 mine libe-ra animam me-am a la-bi-

46 47 48
 -is i-ni-quis a labi-is in

49 50 51
 i-quis et a lingua do-lo-sa et

52 53
 a lingua do-lo

54 55 56
 sa a lingua do-lo-sa et

57 58 59
 a lingua do-lo-sa et a lin-

60 61 62
 qua do-lo-sa et a lin-gua do-lo-

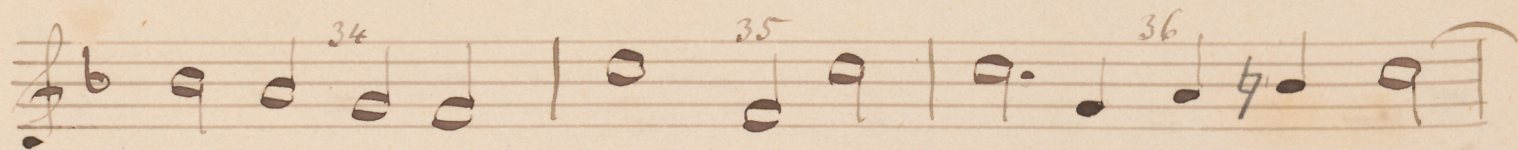
63 64 65
 sa et a lin-gua do-lo-sa

66 67
 do-lo-sa.

II. Motetto, Tenor.

Hans Leo Hasler.

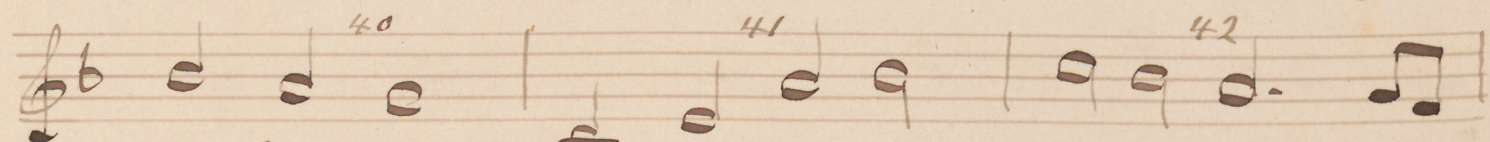
Dixit Ma - ri - a ad An -
gelum ad An - gelum di -
- xit Ma - ri - a ad
Angelum Di - xit Ma - ri - a ad An -
- gelum ad Ange - lum
Di - xit Ma - ri - a ad An -
gelum ad An - gelum
- lum Ec - ce an - cil - la Do -
mi - ni Ec - ce an -
- cilla Do - mi - ni fi -
- at mi - hi se -

Tenor.

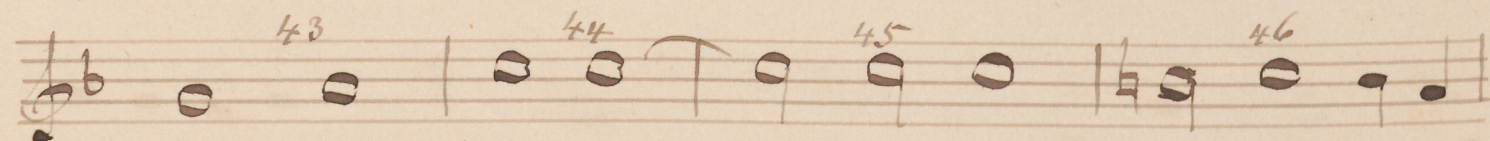
- cundum verbum tu - um se - cundum verbum tu -



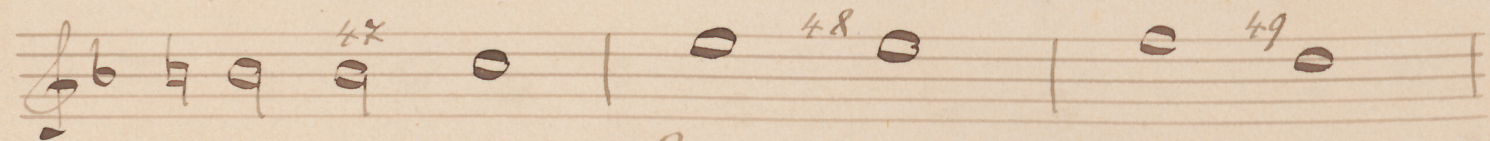
um ver - bum tu - um seun - dum



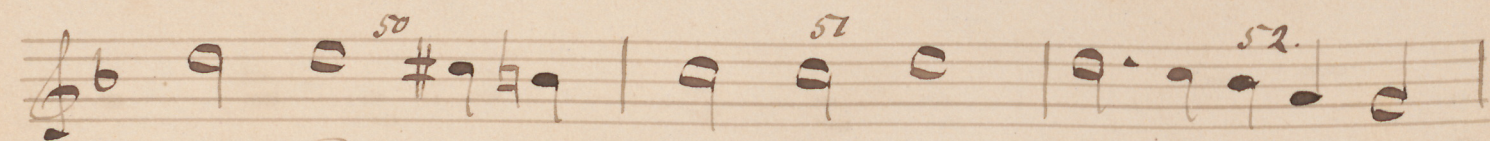
verbum tu - um secundum verbum tu



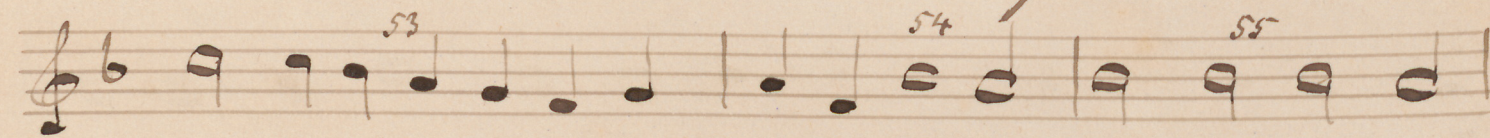
um Ec - ce - ancil - la Do -



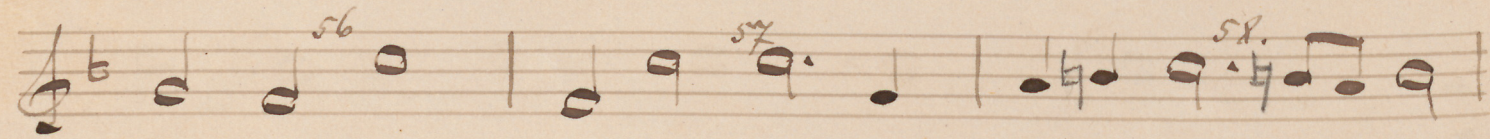
mini Ec - ce ancil -



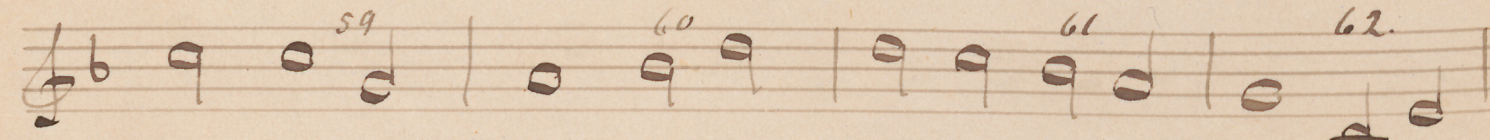
la Do - mini fi -



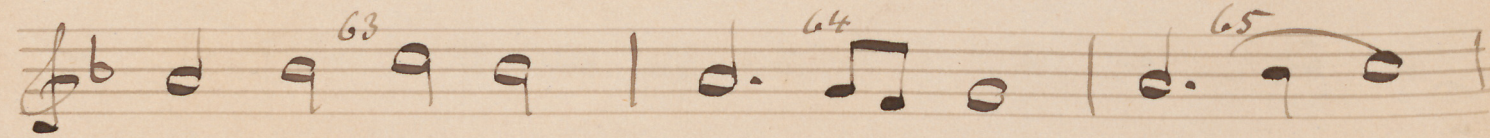
- at mi - hi secundum



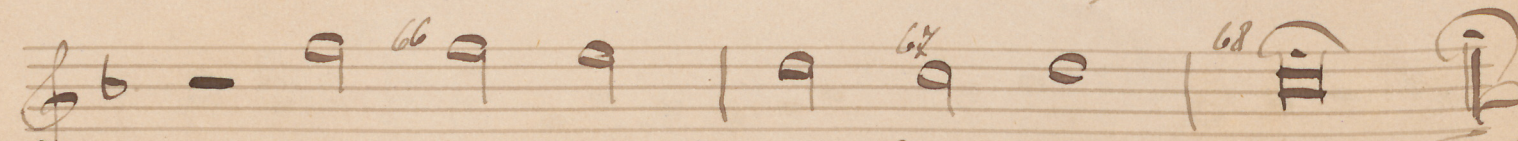
verbum tu - um secundum verbum tu



- um verbum tu - um se - cundum verbum tu - um se -



- cundum verbum tu - um



secun - dum verbum tu - um.



I. Psalm 120.

Bass. ³³

v. Leo Hasler.

1. *corde.* 2. *Bass.*

Ad Domi-num eum tribula- Ad Dominum eum

5 tribula- rer clama- vi eum

8 tribula- rer ela- ma vi ad

11 Domi- num eum tri- bu- la- rer

Sopran. 14 ma *Tenor II* 15 vi-ela 16 ad Dominum eum

Bass. 17 tribu- la 18 Ad Domi- num eum tribu-

20 larer ela- ma 21 vi elama-

23 vi ela- ma- vi eum tribula-

26 rer elama- vi et ex 27 au-

29 di vit me *Sopran* 30 au *Bass.* 31 et ex

32 au- di vit me 33 et 34

Bass.

35 36 Sopran. 37 38

ex - au - di - vit me Do - mi -

38 39 40

ne libera ani - mam me - am a - la - bi -

41 42 Bass 43

is in - i - quis Do - mine li - be -

44 45 46

ra a ni - mam me - am a - la - bi - is i - ni -

47 48 49

quis in - i - quis in -

50 Sopran 51 52

i - quis a lin - gua do - lo - sa - et -

53 Bass. 54 55

a lin - gua do - lo - sa et a lin - gua do -

56 Tenor II 57 Bass 58

lo - sa a lin - gua do - lo - et a lin -

59 60 61

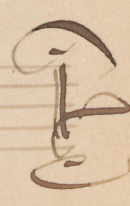
qua do - lo - sa a lin - gua do - lo -

62 Sopran 63 64

sa sa do - lo - sa -

Bass. 65 66 67

et a lin - gua do - lo - sa.



II. Motetto, Bass.

Hans Leo Hasler.

Tenor 1. *Dixit Ma-ri-a ad An-*

4. *gelum ad An-* 5. *gelum di-* 6. *Dixit Ma-* Bass. 7.

8. *ri-a ad An-* 9. *gelum*

11. *xit Mari-* 12. *a* Bass. 13. *Di-xit Mari-*

14. *a ad An-* 15. *ge-* 16. *lum*

Sopran. 17. *ge lum ad* 18. *di-xit Mari-* Bass. 19. *ni*

20. *a ad An-* 21. *ge-* 22. *lum* *pp* *Ee-*

23. *ce* 24. *ancil-la* 25. *Do-mi-*

26. *ni* *pp* *Ee* 27. *ce* 28. *an-cilla*

29. *Do-mi-* 30. *ni* Sopran. 31. *at mi-*

Bass. 32. *fi-* 33. *at mi hi* 34. *cundum verbum tu-* *All.*

Bass.

f Bass

um se - cundum verbum tu - um se -

eundum verbum tu - um se - cundum

verbum tu - um *pp* Ec -

ce an - cilla Do - mi - ni

Ec - ce an - cilla Do -

mini *Tenor.* *f* *Bass.* si - at mi - si -

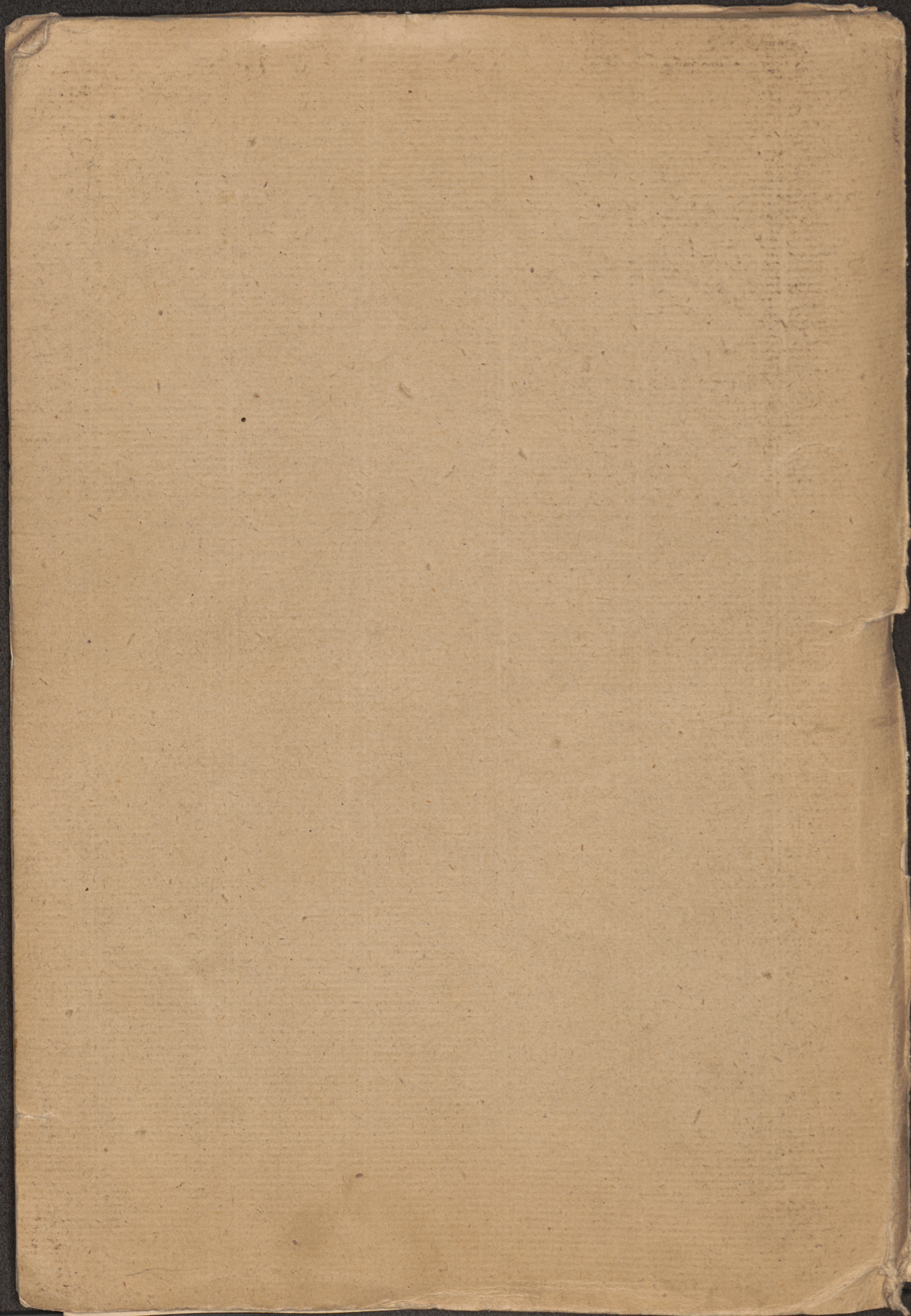
at mi - hi *Alt.* eundum verbum tu -

Bass. *f* eundum verbum tu - um secundum

verbum tu - um se - cun -

dum ver - bum tu - um secun - dum

ver - bum tu - um.



MU 093 IV-111

MU 093 V-17

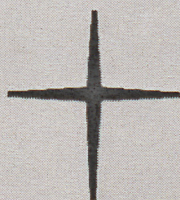
[Sammelmappe: Hans Leo Haßler, Ad
Dominum cum tribularer/Dixit Maria ad
angelum]

MU 093 IV-111 H. L. Haßler, Dixit Maria ad
angelum

MU 093 V-17 H. L. Haßler, Ad Dominum
cum tribularer



Schloßkirchen-
Gemeinde



**Ev.-Luth. Schloßkirchengemeinde
Schwerin**

Evangelisch-Lutherischer
Kirchenkreis Mecklenburg

Depositum in der Bibliothek des
Landeskirchenamts Schwerin
<https://nordkirche.bibliotheca-open.de/>

