


**Sammelmappe: Zwei italienische Chorsätze : Schloßkirchengemeinde Schwerin,
MU 093 IV-173, MU 093 IV-174**

<http://purl.uni-rostock.de/rosdok/ppn178545434X>

Musikhandschrift Freier  Zugang



1. Kyrie aus Missa: Gaudeamus

von Ockenheim, 1440.

2. Kyrie aus Missa: La, sol, la, mi, re,

von Josquin de Pres, 1488.

3. O bone Jesu von Palestrina

4 vocum

4. Adoramus te, Per ti.

Glo. Refor.

280

Sopran.
O bone Jesu

Palaestrina

1

bo - ne Je - su mi - se -
güt' ger Je - su! pfank' iud

re - re no - - stri Qui - a
Iain fr - bar - man! mit du

tu cre - a - sti nos, tu re de -
iud ge - pfaffan fast du iud no

mi - sti nos san - guine tu - o pre -
lö - ist fast, Iain Iain kost bar Blut, Iain

ti o - sis - - - si - mas
kost bar, kost - - - bar Blut.

Adoramus te Christe

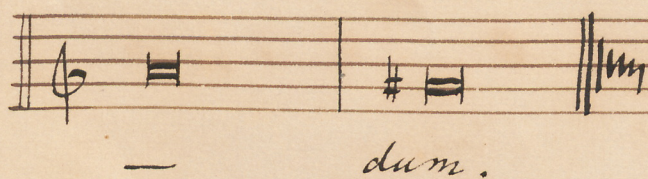
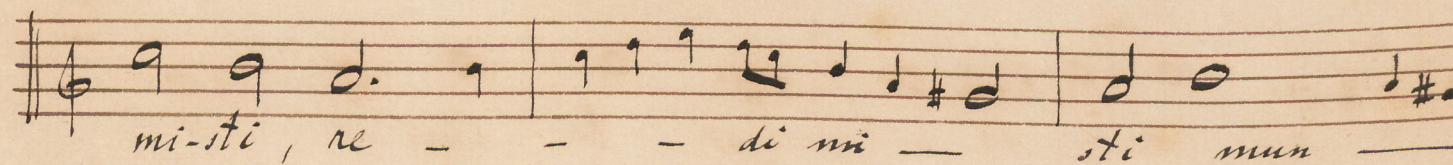
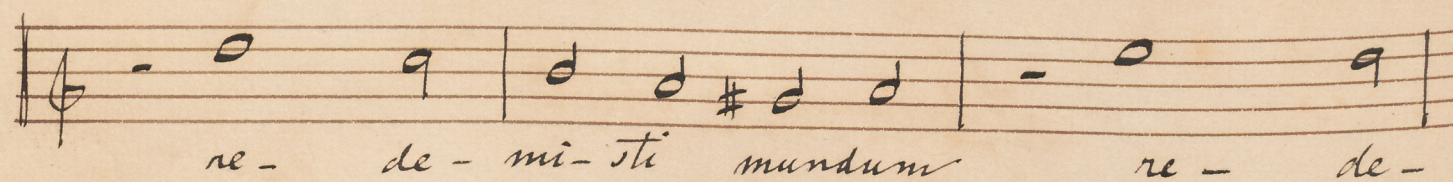
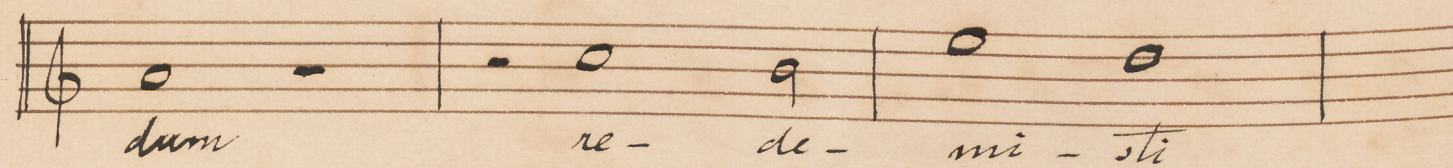
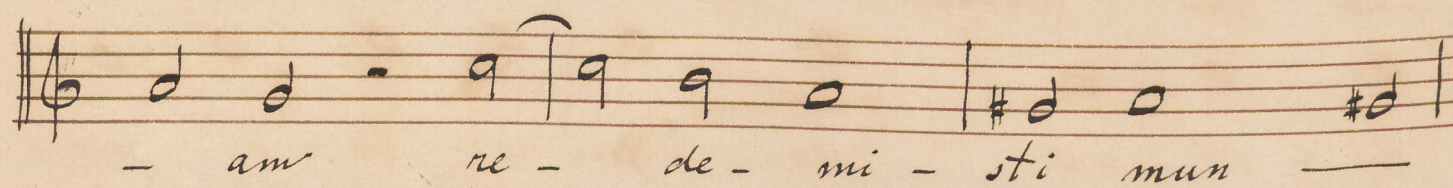
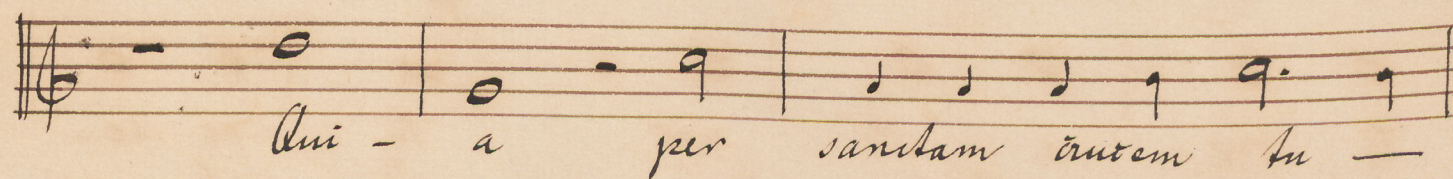
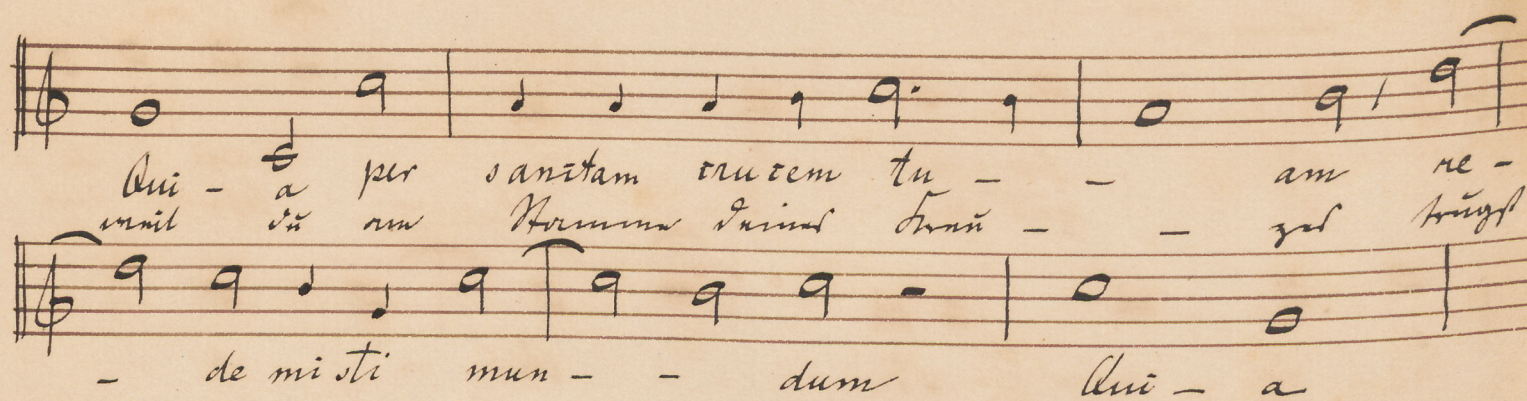
Ant. Persi.

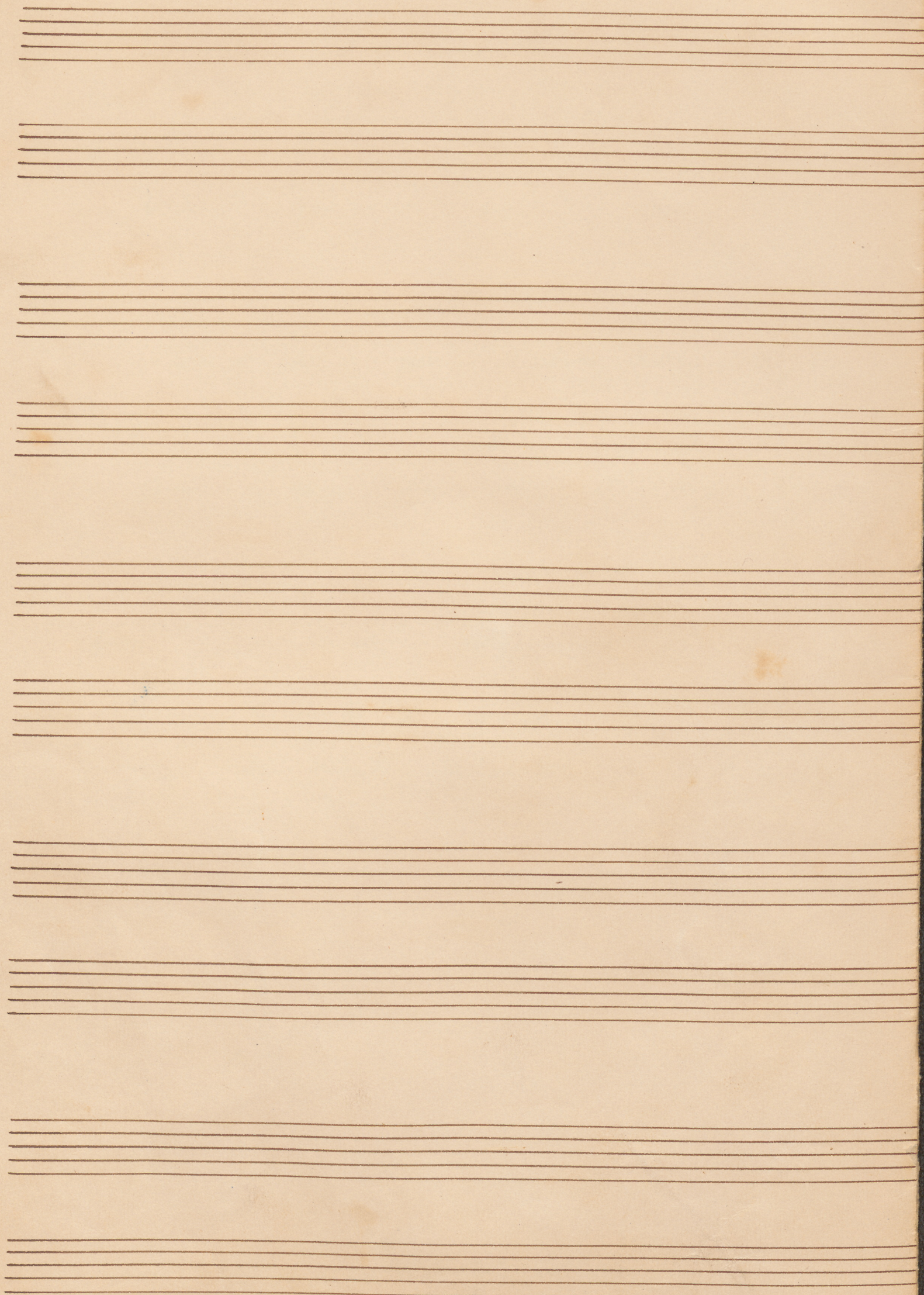
A - do - ra - mus te Chri - ste!
Preis iud An - be - lung, Iain Iain!

A - do - ra - mus te Chri -
Preis Iain An - be - lung Iain Iain!

te et be ne - di - cimus ti - bi
Iain, non Iain Iain fr - kost - bar.

Sopran.





Alt.
O bone Jesu.

Palaestrina

3

bone Je - su mi - se -
gütiger Je - su, Jesu, im
re - re - no - sti! Qui - a
Jesu fu - - bar - man! Mail zu
tu ore - a - sti nos, tu re de -
im ge - heit - fan Jesu, im re -
mi - sti nos san - qui - ne tu - o pre -
lo - - Jesu Jesu, im Jesu, im
- ti - o sis - si - mo
- Jesu Jesu - - bar - blut.

Ado ramus te Christe

Ant. Porti.

Ado - ra - mus te Chri -
Porti, An - ba - lüng des Eri -
ste. Ado - ra - mus te
fan. Porti An - ba - lüng des
Chri - ste al be - ne - di - cimus ti -
Eri - ste non daim 2. Ymmer fr Kräft -
bi.
fan.

V. S.

Handwritten musical score for Alto voice, featuring Latin lyrics and musical notation on a single staff. The score is written in G major (one sharp) and 4/4 time. The lyrics are: "qui - a per sanctam crucem tu - am re - demisti mun - dum re - demisti sti man - dum re - de mi - sti qui - a per sanctam crucem tu - am re - de - mi - sti mun - dum, re de - mi - - sti mun - - dum." The notation includes various note values (half notes, quarter notes, eighth notes), rests, and bar lines. The lyrics are written in a cursive hand below the staff.

qui - a per sanctam crucem tu - am re -
- demisti mun - - dum re - dem -
- sti man - dum re - de mi - sti
qui - a per sanctam crucem tu - am
re - de - mi - sti mun - dum, re
de - mi - - sti mun - - dum.





Tenor.

5

Palatrina

< >

o bo - ne Fe - - - su!

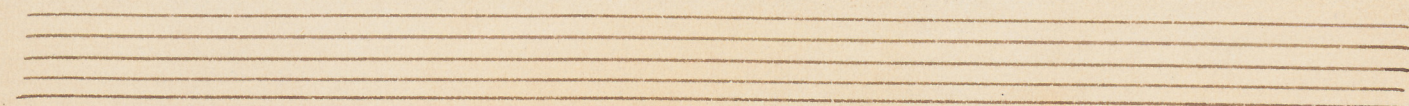
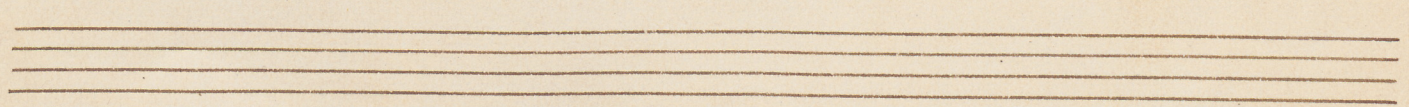
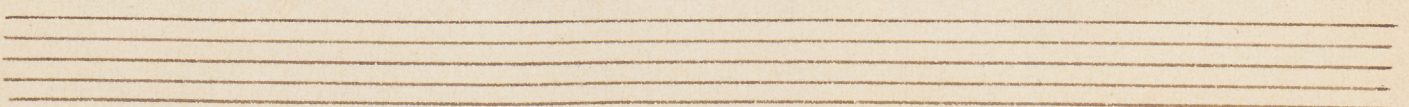
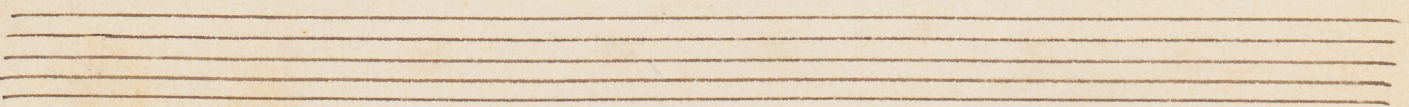
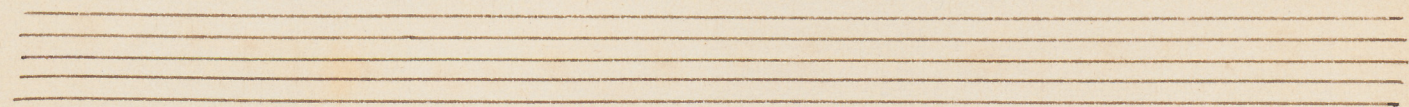
mi - se - re - re no - sti!

Qui - a tu cre - a - sti nos,

p tu re - de - mi - sti nos

p sa - ngui ne tu - o pre - ti - o -

si - fi - si mo.

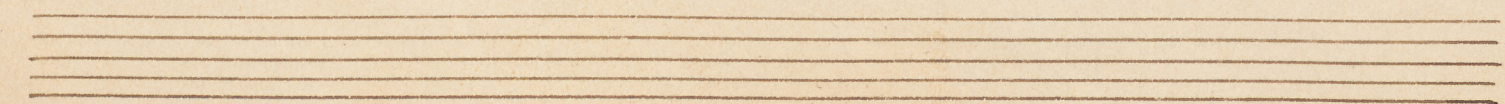
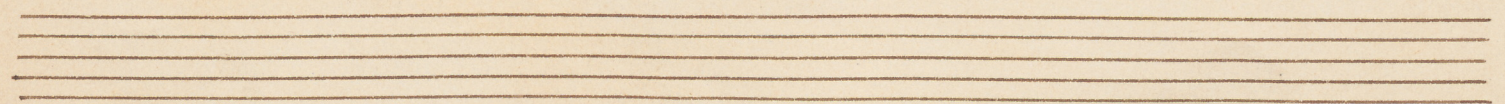
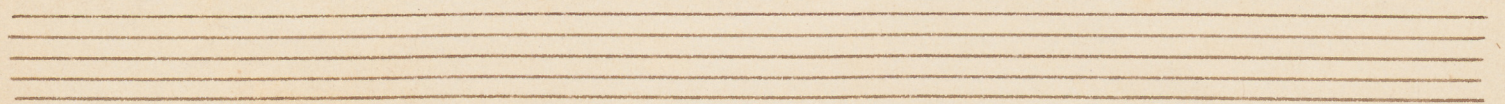
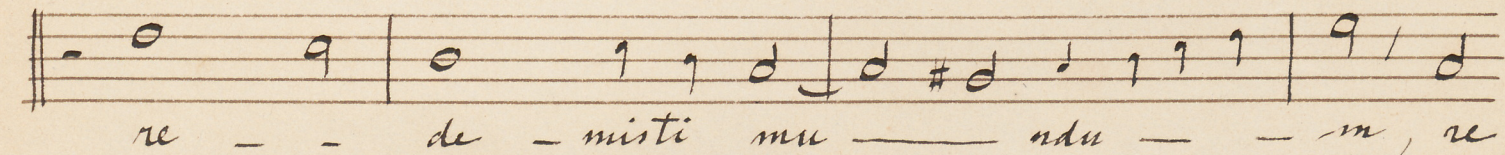
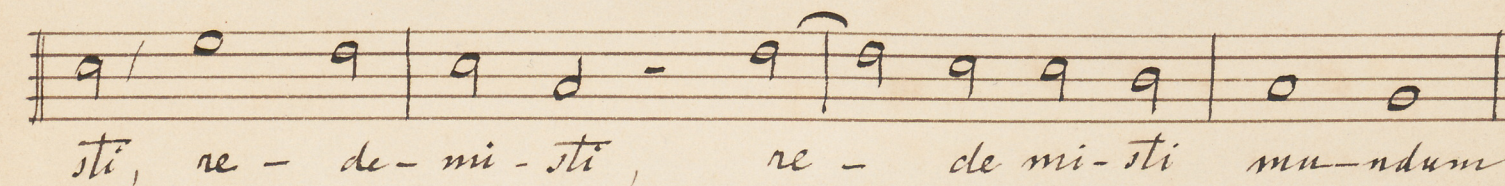
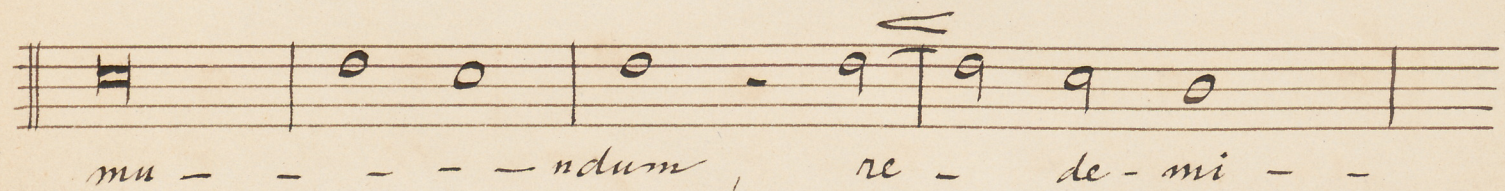
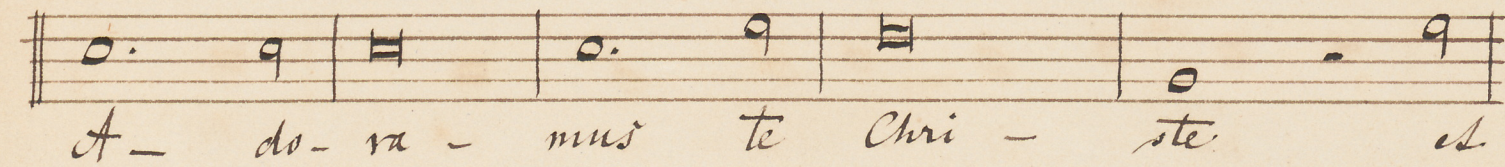
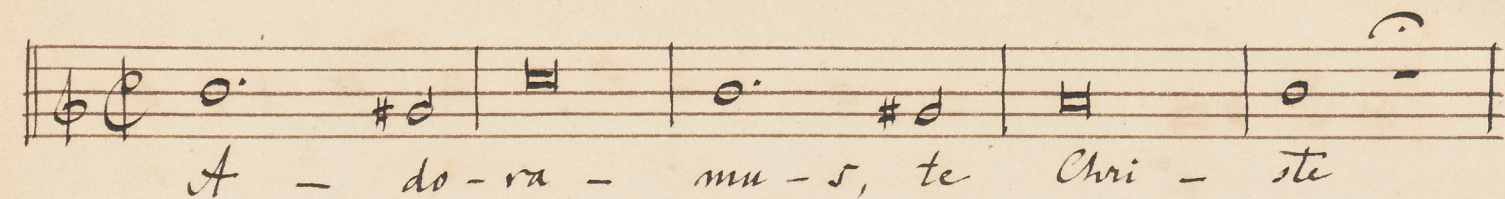


Tenor.

Adoramus.

Ant. Perli.

6



O bone Jesu!

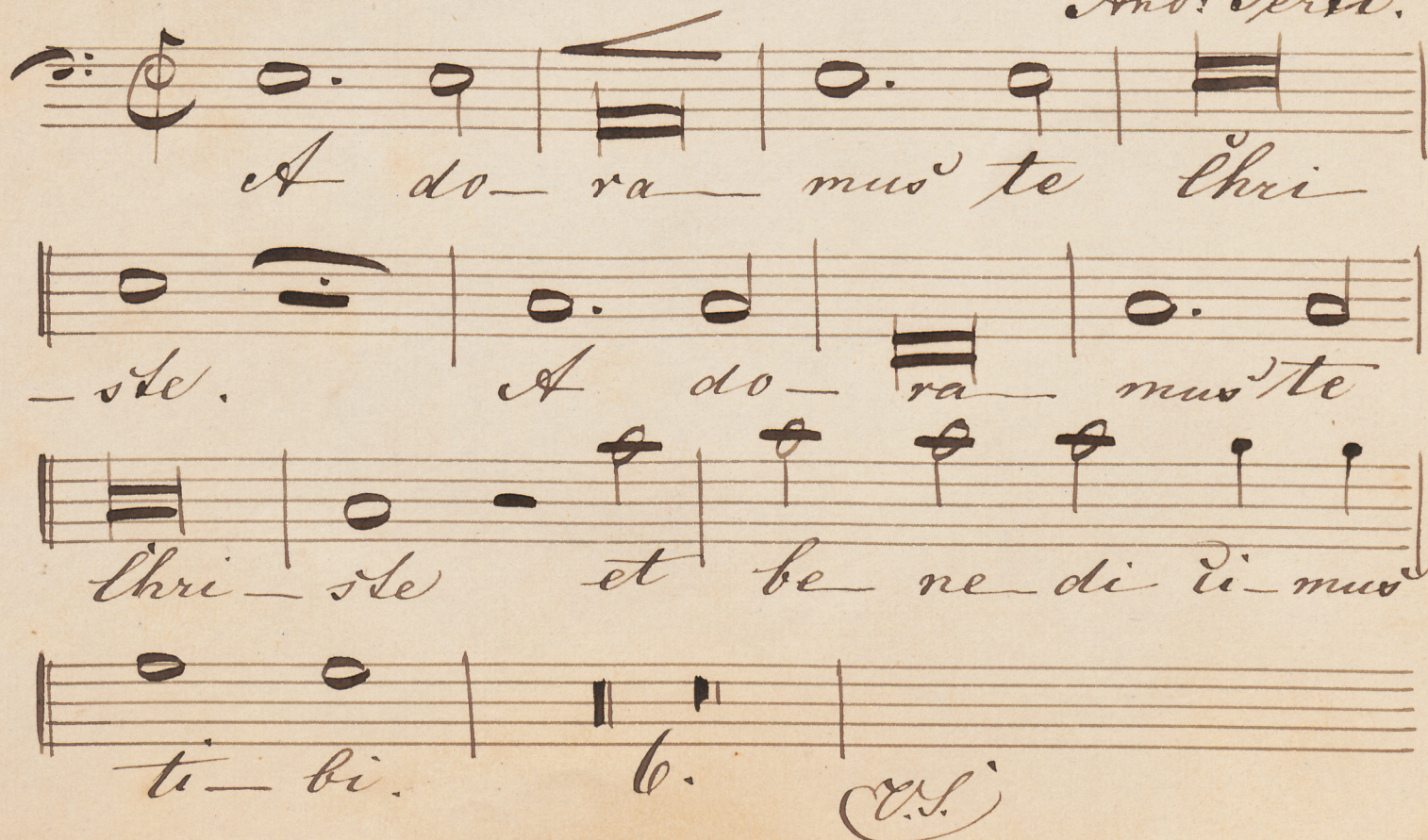
Pass:
Galastrina.



O bo-ne Je-su! mi
yüt' güt' In-juß! pfant'
re-re-re no-öri. Qui
iind' iind' In-bur-mun. Phil
a-tu ire a sti nos, tu
In iind' yn pfaßan fast, In
re-de mi-sti nos, san-gui-
iind' nt lo'-ist fast, Iny iind'
ne-tu o' pre-ti-o-sis-si-
loß bar, Iny iind' loß bar, loß bar
-mg.
Iny.

Aoramus te Christe.

And: Tert.



A do-ra-mus te Chri-
ste. A do-ra-mus te
Chri-ste et be-ne-di-ci-mus
ti-bi. b. (S.S.)

Bass.

8

Qui-a per sanisam iu-tem tu
am re de mi-sti,
qui-a per sanisam iu-tem tu
am re de mi-sti re
de mi-sti re
de mi-sti mun-dem.

MU 093 IV-173

MU 093 IV-174

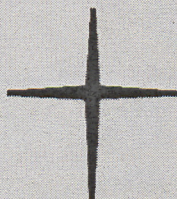
[Sammelmappe: Zwei italienische
Chorsätze]

MU 093 IV-173 G. P. da Palestrina, O bone
Jesu

MU 093 IV-174 A. Perti, Adoramus te



Schloßkirchen-
Gemeinde



**Ev.-Luth. Schloßkirchengemeinde
Schwerin**

Evangelisch-Lutherischer
Kirchenkreis Mecklenburg

Depositem in der Bibliothek des
Landeskirchenamts Schwerin
<https://nordkirche.bibliotheca-open.de/>

