


**Sammelmappe: O vos omnes. Improperia : Schloßkirchengemeinde Schwerin,
MU 093 IV-94, MU 093 VIII-7**

<http://purl.uni-rostock.de/rosdok/ppn1785819194>

Musikhandschrift Freier  Zugang



Vittoria.

a. O vos omnes."

4 vocium.

b. Improperia,

4 vocium.

Partitur
10. Supr.
4. Alt.
6. Ten.
6. Bass.

340

No. 1.



Lud. Vittoria. (1560-1610.)

Handwritten musical score for the first system, consisting of four staves. The music is in G major (one sharp) and common time. The lyrics are: vos omnes.

1. vos omnes

2. vos omnes

3. vos omnes

4. vos omnes



Handwritten musical score for the second system, consisting of four staves. The music continues in G major and common time. The lyrics are: nes qui transitis per vias.

5. nes qui transitis per vias

6. nes qui transitis per vias

7. nes qui transitis per vias

8. nes qui transitis per vias

9. 10. 11. 12.

vi — dm At ten —
 At ten — di
 At ten — di
 vi — am At — ten di

13. 14. 15. 16.

di - te et vi — de — te
 te et vi de te
 te et vide te
 te et vi de te

17. 18. 19. 20.

si est do lor si

21. 22. 23. 24.

lor si mi-lis si cut do lor mi-lis si cut do lor mi-lis

25. 26. 27. 28.

do lor me us si cut do lor me
 me us si cut do lor me
 me us si cut do lor me
 si cut do lor me

29. 30. 31. 32.

us si cut do lor me
 us si cut do lor me
 us si cut do lor me
 us si cut do lor me

33. 34. 35. 36.

us. At ten di te u-

us. At ten di te

us At ten di te

us. At ten di te

37. 38. 39. 40

ni ver si po pu li et

u-ni-ver-si po pu li et

u-ni-ver-si po pu li et

u-ni-ver-si po pu li et

41. 42. 43. 44.

vi de te do lo rem
 vi de te do lo rem
 vi de te do lo rem
 vi de te do lo rem

45. 46. 47. 48.

do lo rem me um do lo
 me um do lo rem me um do
 me um do lo rem me um do lo
 me um do lo rem

49. 50. 51. 52.

rem me um.
 lo rem me um. Si
 rem me um. Si
 me um. Si

53. 54. 55. 56.

Si est do lor si-
 est do lor si-
 est do lor si-
 est do lor si-

57. 58. 59. 60.

mi lis si cut do lor me
 mi lis si cut do lor me
 lor si mi lis si cut do lor me
 mi lis

61. 62. 63. 64.

us si cut do lor me us
 us si cut do lor me
 us si cut do lor me
 si cut do lor me

65. 66. 67. 68.

us si cut do lor me us.
 us si cut do lor me us.
 us si cut do lor me us.
 us si cut do lor me us.

No. 2. Gott der Heilige und Mächtige.
 (Improperia.)

v. Lud. Vittoria. (1560-1610.)

1. Chor.
 Messing 1.

2. 3.

P. Po-pu-le me-us, quid fe-ci
 P. Po-pu-le me-us, quid fe-ci
 P. Po-pu-le me-us, quid fe-ci
 P. Po-pu-le me-us, quid fe-ci

Anmerk. Das zweite Chor muß von vier Violoncelli oder von vier
 Bassen besetzt sein. Diese Chor gesungen werden.

4 5 6.

Si — bi? aut in quo con-tri-

Si — bi? aut in quo con-tri-

Si — bi? aut in quo con-tri-

Si — bi? aut in quo con-tri-

7. 8. 9.

sta-vi-te? re-spon-de mi-

sta-vi-te? re-spon-de mi-

sta-vi-te? re-spon-de mi-

sta-vi-te? re-spon-de mi-

II Chor.

10. 11. 12.

hi! A - gi - os o The -

hi! A - gi - os o The -

hi! A - gi - os o The -

hi! A - gi - os o The -

I. Chor.

13 14 15

os! San - ctus

os! San - ctus

os! San - ctus

os! San - ctus

II. Chor.

16. 17. 18.

De us! A gi-

De us! A gi-

De us! A gi-

De us! A gi-

I. Chor.

19. 20. 21.

os I-schij-ros! San

os I-schij-ros! San

os I-schij-ros! San

os I-schij-ros! San

II. Chor.

22. 23. 24.

ctus for - sis! A - gi - os A -
 ctus for - sis! A - gi - os A -
 ctus for - sis! A - gi - os A -
 ctus for - sis! A - gi - os A -

25. 26. 27.

tha - na - tos e - le - i - son i
 tha - na - tos e - le - i - son i
 tha - na - tos e - le - i - son i
 tha - na - tos e - le - i - son i

Handwritten musical score on four staves. The first staff is marked with measure numbers 34 and 35. The key signature has two flats (B-flat and E-flat). The lyrics are: "bis.", "re-re no-bis.", "no bis.", and "bis.".



34. 35.

pp bis.

re-re no- *pp* bis.

no *pp* bis.

bis.

Handwritten musical notation on ten staves. The notation is extremely faint and illegible, appearing as light brown lines on a yellowed paper background. The staves are arranged vertically down the page.

Noel.

Sopran.

Lud. Vittoria. (1560-1610.)

1. 2. 3. 4.
 vos om
 5. 6. 7. 8.
 nes qui tran si tis per
 9. 10. 11. 12.
 vi am At ten
 13. 14. 15. 16.
 di te et vi de - te
 17. 18. 19. 20.
 si est do
 21. 22. 23. 24.
 lor si mi - lis si cut
 25. 26. 27.
 do lor me us si - cut do lor
 28. 29. 30. 31.
 me us si cut do lor me
 32. 33. 34. 35.
 us. At ten - di - te -
 36. 37. 38.
 u - ni - ver - si po - pu -
 39. 40. 41. 42.
 li et vi - de

Sopran.

43. 44. 45. 46.

te do - lo

47. 48. 49.

rem me - um do lo - rem me -

50. 51. 52. 53.

um Si

54. 55. 56.

est do - lor si -

57. 58. 59.

mi - lis si - cut

60. 61. 62.

do - lor me - us si - cut do - lor

63. 64. 65.

me - us si - cut

66. 67.

do - lor me - us.

No. 2. Gott der Heilige und Mächtige.

I. Chor.

(Improperia.)

Lud. Vittoria. (1560-1610.)

Mäßig. 1. 2. 3.

1. 2. 3.

4. 5. 6.

Popu - le - me - us, quid fe - ci -

ti - bi? aut in quo con - tri -

Sopran.

7. 8. 9. 10.
sta-vi-te? re-spon-de-mi-hi!

II. Chor. 11. 12. 13.
A-gi-os o The-os!

I. Chor. 14. 15. 16. 17.
San-ctus De-us!

II. Chor. 18. 19. 20.
A-gi-os I-schj-ros!

I. Chor. 21. 22. 23.
San-ctus for-tis!

II. Chor. 24. 25.
A-gi-os A-Sha-na-dos e

26. 27. 28.
le-i-son i-mas!

I. u. II. Chor. 29. 30.
mf San-ctus et im-mor-ta-

31. 32. 33.
fp. lis mi-se-re-re no-

34. 35.
pp bis.

Sopran.

Handwritten musical notation on a page with ten staves. Each staff consists of five horizontal lines. The page is otherwise blank, with no notes or lyrics written on it.

No. 21.

Alt.

Lud. Vittoria. (1560-1610.)

Handwritten musical score for Alto voice, featuring Latin lyrics and numbered measures from 1 to 39. The score is written on ten staves in G major (one sharp) and 4/4 time. The lyrics are: vos omnes qui tran-si-tis per-ri-am. At-ten-di-te et vi-de-te si est do-mus si cut do-mus si cut do-mus si cut do-mus. At-ten-di-te u-ni-ver-si po-pu-li.

Alt.

40. et 41. vi de 42. te do. 43.

44. lo - rem me um 45. do lo 46. rem me 47.

48. um 49. do - lo - rem 50. me 51. um.

52. Si 53. est 54. do 55. lor si

56. mi 57. lis 58. si -

59. cut 60. do lor me 61. us

62. si 63. cut do lor me 64. us 65. si cut

66. do 67. lor me 68. us.

No. 2. Gott der Heilige und Gnädige.

(Improperia.)

Lud. Vittoria. (1560-1610.)

I. Chor.

moderato 1.

2.

3.

moderato 4. Po - pu - le 5. me - us 6. quid fe - ei

ti 7. bi? 8. aut in quo con - tri -

Alt.

7. 8. 9. 10.
sta - vi - te? re - spon - de mi - hi!

II. Chor. 11. 12. 13.
A - gi - os o The - os!

I. Chor. 14. 15. 16. 17.
San - ctus De - us!

II. Chor. 18. 19. 20.
A - gi - os I - schij - ros!

I. Chor. 21. 22. 23.
San - ctus for - tis!

II. Chor. 24. 25.
A - gi - os A - tha - na - tos e -

26. 27. 28.
le - i - son i - mas!

I u. II. Chor. 29. 30.
mf San - ctus et im - mor - ta -

31. 32. 33.
lis mi - se -

34. 35.
re - re no - bis.

Alt.



No. 1.

Tenor.

Lud. Vettorina, (1560-1610.)

1. 2. 3. 4.

vos om

5. 6. 7.

nes qui tran-si-

8. 9. 10.

tis per vi am

11. 12. 13. 14.

At ten-di-te et vi-de-

15. 16. 17. 18.

te si est do-

19. 20. 21.

lor si

22. 23. 24.

mi-lis si-cut do lor

25. 26. 27.

me us si-cut do lor

28. 29. 30.

me us si-

31. 32. 33.

cut do lor me us

34. 35. 36. 37.

At ten-di-te u-ni-ver-si

Tenor.

38. 39. 40. 41.
 po pu - li et vi - de
 42. 43. 44. 45.
 te do lo rem me
 46. 47. 48. 49.
 um do lo - rem me - um do lo rem me
 50. 51. 52. 53.
 um. Si est do -
 54. 55. 56. 57.
 lor si - mi - lis si est do - lor si -
 58. 59. 60. 61.
 mi - lis si - cut do - lor me us si -
 62. 63. 64. 65.
 cut do lor me us si -
 66. 67. 68.
 cut do lor me us.

No. 2. Gott der Heilige und Gnädige.

I. Chor. (Improperia.) Lud. Vittoria. (1560-1610.)

Mäßig. 1. 2. 3.
 Po - pu - le me - us, quid fe - ci
 ti - bi? aut in quo con - tri -

Tenor.

7 sta - vi - te ? re - spon - de mi - hi !

II. Chor. 11 A - gi - os o The - os !

I. Chor. 14 San - ctus De - us !

II. Chor. 18 A - gi - os I - schij - ros !

I. Chor. 21 San - ctus for - tis !

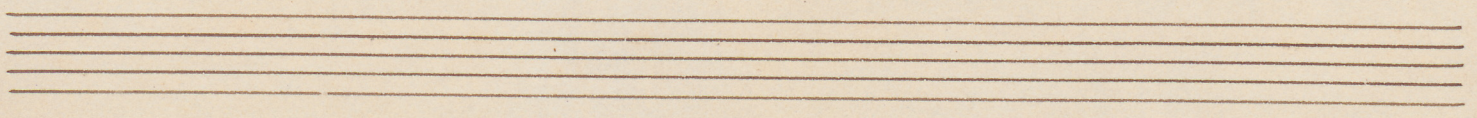
II. Chor. 24 A - gi - os A - sha - na - tos e -

26 le - i - son i 27 mas ! 28

I. u. II. Chor. 29 *mf* San - ctus et im - mor - ta

31 lis mi - se - re - re

34 no 35 *pp* bis .



Tenor



No. 1.

Bass.

Lud. Vittoria (1560-1610.)

1. 2. 3. 4.

5. 6. 7. 8.

9. 10. 11. 12.

13. 14. 15. 16. 17.

18. 19. 20. 21. 22.

23. 24-25. 26. 27.

28. 29. 30. 31.

32. 33. 34. 35.

36. 37. 38.

39. 40. 41. 42.

43. 44. 45. 46.

o - vos om -
 nes - qui - Aran - si - dis per
 vi - am At - ten - di
 te et vi - de te si.
 est do - lor si - mi -
 lis si - cut do - lor
 me - us si - cut do - lor me -
 us. At - ten -
 di - te u - ni - versi po - pu -
 li et vi - de
 te do - lo - rem me - um

Bass.

47. 48. 49. 50.
do - lo - rem me -

51. 52. 53. 54.
um - si est do - lor,

55. 56. 57. 58.
si mi - lis

59-60. 61.
si - cut do - lor

63. 64. 65.
me - us si - cut

66. 67. 68.
do - lor me - us.

No. 2. Gott der Heilige und Gnädige.

I. Chor.

(Improperia.)

Lud. Vittoria. (1560-1610.)

1. 2. 3. 4.
Po - pu - le me - us quid fe - ci

5. 6.
ti - bi? aut in quo con - tri -

7. 8. 9. 10.
sta - vi - se? re - spon - de mi - hi!

II. Chor. 11. 12. 13.
A - gi - os o The - os!

Bass.

I. Chor.

14. 15. 16. 17.

San - ctus De - us!

II. Chor.

18. 19. 20.

A - gi - os I - schy - ros!

I. Chor.

21. 22. 23.

San - ctus for - tis!

II. Chor.

24. 25.

A - gi - os A - tha - na - tes e -

I. Chor.

26. 27. 28.

le - i - son i - mas!

I. u. II. Chor.

29. 30.

San - ctus et im - mor - ta

I. Chor.

31. 32. 33.

lis mi - se - re - re no

I. Chor.

34. 35.

bis.

Pass.

Handwritten musical notation on ten staves. The notation is extremely faint and illegible, appearing as light brown lines and shapes on the aged paper. The staves are arranged vertically down the page.

MU 093 IV-94

MU 093 VIII-7

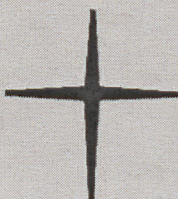
[Sammelmappe: Tomàs Luis da Vittoria, O vos omnes/Improperia]

MU 093 IV-94 T. L. da Vittoria, O vos omnes

MU 093 VIII-7 T. L. da Vittoria, Improperia



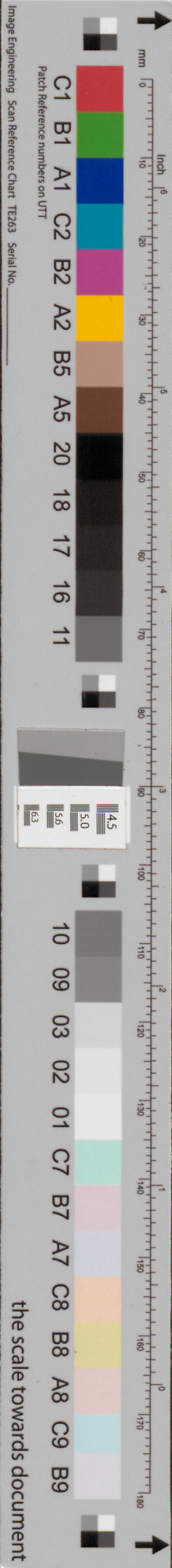
Schloßkirchen-
Gemeinde



**Ev.-Luth. Schloßkirchengemeinde
Schwerin**

Evangelisch-Lutherischer
Kirchenkreis Mecklenburg

Depositum in der Bibliothek des
Landeskirchenamts Schwerin
<https://nordkirche.bibliotheca-open.de/>



the scale towards document