

Stephan Scultetus

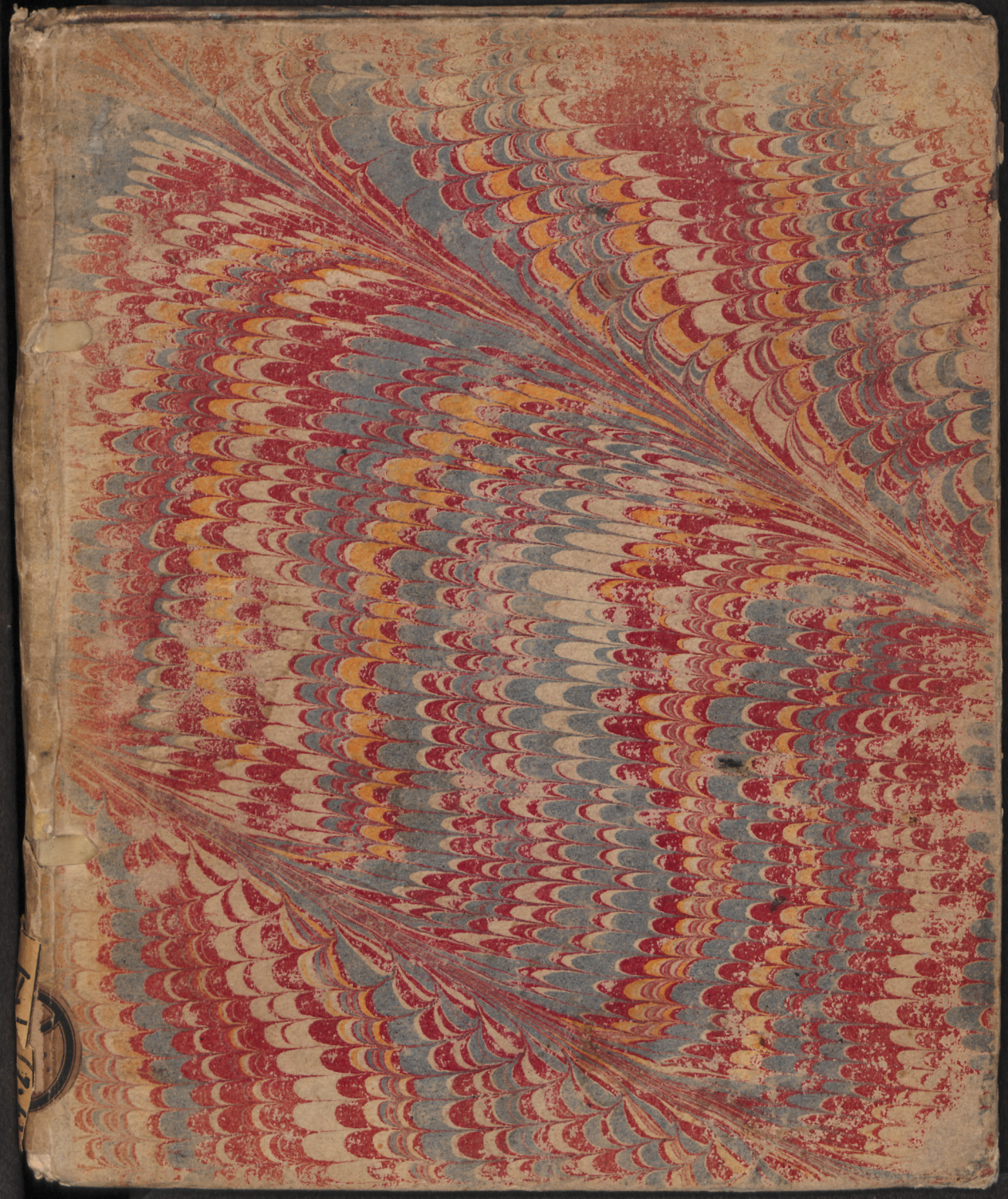
**Artis Fortificatoriae resolutae Tabulae Novae Et Completissimae, Supputatae ad
Latus omnium 60 part. Angulum verò propugnaculi minimum 70 graduum**

Rostochi[i]: Ex Officina typographica haeredum Richelianorum, 1635

<http://purl.uni-rostock.de/rosdok/ppn747115192>

Druck Freier  Zugang

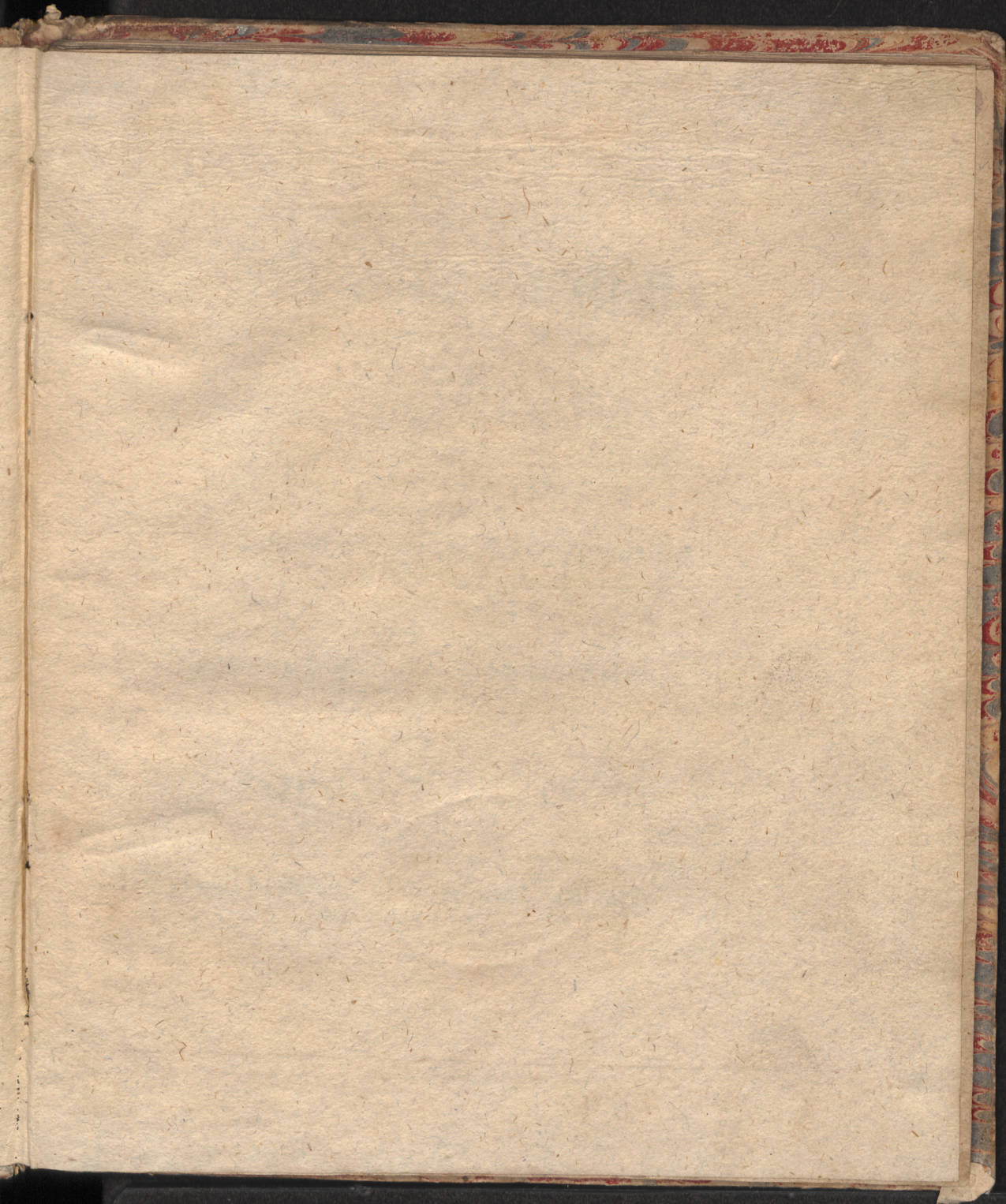


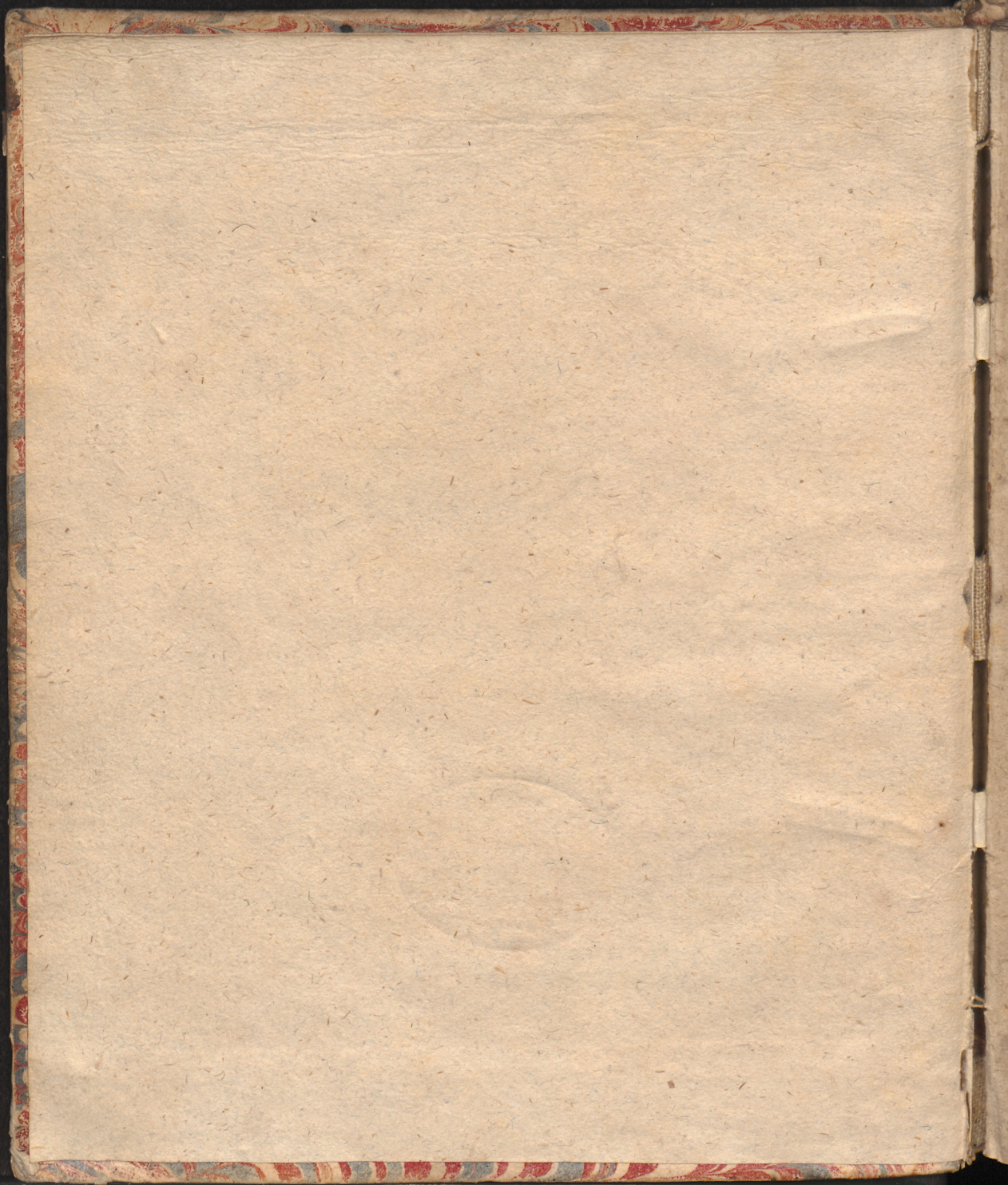


A-C.
A-D.

g Be

L. III = 1013^{1. 2.}





Artis Fortificatoriae resolutae

TABULÆ NOVÆ ET COMPLETISSIMÆ,

*Supputata ad Latus omnium 60 part. Angulum
verò propugnaculi minimum
70 graduum.*

Auctore

STEPHANO SCHULTETO
Trans-Albino Brandenburgico.



ROSTOCHI

Ex Officinâ typographicâ heredum Richelianorum,

ANNO M. DC. XXXV.

THE BIBLE NOVA
ET COMPLETISSIMA

STEFANO SCHEITTO

MDCCLXXI

IV.

Courinenfuß.		Flanque.	Reffini.	Polygon.	Semidiameter.
84	12.00	4.86	27.56	64	12.00
83				63	
82				62	
81				61	
80				42.40	60
79				40.72	59
78				41.01	58
77				40.30	57
76				39.60	56
75				38.89	55
74				38.18	54
73				37.48	53
72				36.78	52
71				36.06	51
70				35.35	50
69				34.65	49
68				33.94	48
67				33.23	47
66				32.53	46
65	12.00	4.86	27.56	31.82	45

Irregular

Real Regular Smt.

Siz

Angulus Circumferentia 90 gr.

A 2

					Courtenenftück.				
					Flanque.				
					Stellini.				
					Polygon.				
					Semidiameter.				
31.11	44	8.80	3.57	20.21	16.97	24	4.80	1.95	11.02
30.30	43	8.60	3.49	19.75	16.26	23	4.60	1.87	10.57
29.70	42	8.40	3.41	19.29	15.55	22	4.40	1.79	10.34
28.99	41	8.40	3.41	19.29	14.85	21	4.20	1.71	9.64
28.28	40	8.40	3.41	19.29	14.14	20	4.00	1.63	9.19
27.58	39	8.40	3.41	19.29	13.44	19	3.80	1.55	8.73
26.87	38	8.40	3.41	19.29	12.73	18	3.60	1.47	8.27
26.16	37	8.40	3.41	19.29	12.02	17	3.40	1.39	7.81
25.46	36	7.20	2.92	16.54	11.66	16	3.20	1.31	7.35
24.75	35	7.00	2.83	16.07	10.61	15	3.00	1.22	6.89
24.04	34	6.80	2.75	15.62	9.90	14	2.80	1.15	6.43
23.33	33	6.60	2.67	15.16	9.19	13	2.60	1.07	5.74
22.63	32	6.40	2.59	14.70	8.48	12	2.40	0.99	5.51
21.92	31	6.20	2.51	14.24	7.77	11	2.20	0.91	5.17
21.21	30	6.00	2.43	13.78	7.07	10	2.00	0.83	4.59
20.51	29	5.80	2.35	13.32	6.36	9	1.80	0.75	4.14
19.80	28	5.60	2.27	12.86	5.83	8	1.60	0.67	3.67
19.09	27	5.40	2.19	12.41	4.95	7	1.40	0.59	3.22
18.38	26	5.20	2.11	11.98	4.24	6	1.20	0.51	2.76
17.68	25	5.00	2.03	11.48	3.03	5	1.00	0.43	2.29
					2.92	4	0.80	0.32	2.83

Angulus Circumferentia 90 gr.

Courtmentf.		Flanque.	f.83	22.59
Polygon	Rehlini.			
84	12.00			
83				
82				
81				
80				
79				
78				
77				
76				
75				
74				
73				
72				
71				
70				
69				
68				
67				
66				
65	12.00	f.83	22.59	

Mit Taxelinen.
+

Courtmentf.		Flanque.	f.83	22.59
Polygon	Rehlini.			
64	12.00			
63				
62				
61				
51.04	60	12.00	f.83	22.59
50.18	59	11.80	f.73	22.21
49.34	58	11.60	f.64	21.84
48.48	57	11.40	f.54	21.46
47.63	56	11.20	f.44	21.08
46.79	55	11.00	f.34	20.72
45.93	54	10.80	f.24	20.33
45.08	53	10.60	f.15	19.79
44.23	52	10.40	f.05	19.58
43.38	51	10.20	4.95	19.20
42.53	50	10.00	4.86	18.83
41.68	49	9.80	4.76	18.45
40.83	48	9.60	4.66	18.07
40.09	47	9.40	4.57	17.70
39.24	46	9.20	4.47	17.32
38.38	45	9.00	4.37	16.94

Angulus Circumferentia 108 gr.

A 3

Semidiameter	Polygon	Radius	Flangue	Couronnement
37.43	44	8.80	4.28	16.56
36.53	43	8.60	4.18	16.19
35.73	42	8.40	4.08	15.81
34.88	41	8.40	4.08	15.81
34.02	40	8.40	4.08	15.81
33.17	39	8.40	4.08	15.81
32.32	38	8.40	4.08	15.81
31.46	37	8.40	4.08	15.81
30.61	36	8.40	4.08	15.81
29.77	35	8.40	4.08	15.81
28.92	34	8.40	4.08	15.81
28.07	33	8.40	4.08	15.81
27.22	32	6.40	3.11	12.04
26.36	31	6.20	3.01	11.67
25.52	30	6.00	2.91	11.29
24.67	29	5.80	2.81	11.92
23.81	28	5.60	2.72	10.54
22.97	27	5.40	2.62	10.16
22.12	26	5.20	2.52	9.79
21.26	25	5.00	2.43	9.41

Semidiameter	Polygon	Radius	Flangue	Couronnement
20.42	24	4.80	2.33	9.03
19.56	23	4.60	2.23	8.66
18.71	22	4.40	2.14	8.28
17.86	21	4.20	2.04	7.90
17.01	20	4.00	1.99	7.56
16.16	19	3.80	1.84	7.25
15.39	18	3.60	1.75	6.78
14.49	17	3.60	1.65	6.44
13.61	16	3.20	1.55	5.02
12.79	15	3.00	1.45	5.65
11.90	14	2.80	1.36	5.27
11.06	13	2.60	1.26	4.19
10.21	12	2.40	1.16	4.52
9.35	11	2.20	1.07	4.14
8.51	10	2.00	0.99	3.78
7.67	9	1.80	0.87	3.52
6.80	8	1.60	0.77	3.16
5.90	7	1.40	0.68	2.63
5.11	6	1.20	0.58	2.21
4.26	5	1.00	0.50	1.84
3.41	4	0.80	0.39	1.13

Angulus Circumferentia 108 gr.

VI.

Semidiameter.	Polygon.	Relini.	Flanque.	Courinment.	
	84	12.00	6.85	21.70	
	83				
	82				
	81				
	80				
	79				
	78				
	77				
	76				
	75				
	74				
	73				
	72				
	71				
	70				
	69				
	68				
	67				
	66				
	65				
	64				
	63				
	62				
	61				
	60.00	60	12.00	6.85	21.70
	59.	59	11.80	6.73	21.34
	58.	58	11.60	6.62	20.98
	57.	57	11.40	6.51	20.62

+ Mit Xavelinen.

Semidiameter.	Polygon.	Relini.	Flanque.	Courinment.
56.00	56	11.20	6.39	20.26
55.	55	11.00	6.28	19.84
54.	54	10.80	6.16	19.53
53.	53	10.60	6.05	19.17
52.	52	10.40	5.94	18.81
51.	51	10.20	5.82	18.45
50.	50	10.00	5.71	18.08
49.	49	9.80	5.59	17.72
48.	48	9.60	5.48	17.36
47.	47	9.40	5.37	17.00
46.	46	9.20	5.25	16.64
45.	45	9.00	5.14	16.28
44.	44	8.80	5.02	15.91
43.	43	8.60	4.91	15.55
42.	42	8.40	4.80	15.19
41.	41	8.40	4.80	15.19
40.	40	8.40	4.80	15.19
39.	39	8.40	4.80	15.19
38.	38	8.40	4.80	15.19
37.	37	8.40	4.80	15.19
36.	36	8.40	4.80	15.19
35.	35	8.40	4.80	15.19
34.	34	8.40	4.80	15.19
33.	33	8.40	4.80	15.19
32.	32	8.40	4.80	15.19
31.	31	6.20	3.54	11.21
30.	30	6.00	3.43	10.85

Angulus Circumferentia 120.

Courtenenß					Courtenenß					
Flanquet	Reini.	Polygon.	Semidiameter.		Flanquet	Reini.	Polygon.	Semidiameter.		
		84	12.00	8.27	23.18	64.53	56	11.20	7.80	21.63
		83				63.37	55	11.00	7.68	21.25
		82				62.22	54	10.80	7.53	20.85
		81				61.04	53	10.60	7.39	20.48
		80				59.92	52	10.40	7.25	20.09
		79				58.77	51	10.20	7.12	19.70
		78				57.61	50	10.00	6.98	19.32
		77				56.46	49	9.80	6.75	18.93
		76				55.31	48	9.60	6.62	18.54
		75				54.16	47	9.40	6.51	18.16
		74				53.01	46	9.20	6.33	17.77
		73				51.85	45	9.00	6.21	17.40
		72				50.70	44	8.80	6.06	16.98
		71				49.55	43	8.60	5.93	16.61
		70				48.40	42	8.40	5.69	16.23
		69				47.24	41	8.40	5.69	16.23
		68				46.09	40	8.40	5.69	16.23
		67				44.56	39	8.40	5.69	16.23
		66				43.76	38	8.40	5.69	16.23
		65				42.63	37	8.40	5.69	16.23
		64				41.48	36	8.40	5.69	16.23
		63				40.22	35	8.40	5.69	16.23
		62				39.17	34	8.40	5.69	16.23
		61				38.03	33	6.60	4.55	12.42
		60	12.00	8.27	23.16	36.87	32	6.40	4.41	12.36
		59	11.80	8.22	22.79	35.72	31	6.20	4.30	11.98
		58	11.60	8.08	22.41	34.57	30	6.00	4.19	11.59
		57	11.40	7.97	22.02					

Angulus Circumferentia 128. 35.

VIII.

Semidiameter.	Polygon.	Reini.	Flanque.	Courtinentf.	Semidiameter.	Polygon.	Reini.	Flanque.	Courtinentf.
84	12.00	9.41	24.20		73.17	56	11.20	8.78	22.59
83					71.86	55	11.00	8.63	22.18
82					70.56	54	10.80	8.47	21.78
81					69.24	53	10.60	8.31	21.37
80					67.94	52	10.40	8.15	20.97
79					66.63	51	10.20	8.00	20.57
78					65.33	50	10.00	7.84	20.16
77					64.01	49	9.80	7.68	19.76
76					62.71	48	9.60	7.53	19.35
75					61.41	47	9.40	7.37	18.96
74					60.09	46	9.20	7.21	18.55
73					58.79	45	9.00	7.06	18.15
72					57.49	44	8.80	6.90	17.75
71					56.18	43	8.60	6.74	17.34
70					54.87	42	8.40	6.59	16.94
69					53.57	41	8.40	6.59	16.94
68					52.26	40	8.40	6.59	16.94
67					50.96	39	8.40	6.59	16.94
66					49.65	38	8.40	6.59	16.94
65					48.34	37	8.40	6.59	16.95
64					47.03	36	8.40	6.59	16.94
63					45.73	35	8.40	6.59	16.94
62					44.32	34	8.40	6.59	16.94
61					43.11	33	6.60	5.18	13.32
78.39	60	12.00	9.41	24.20	41.81	32	6.40	5.02	12.91
77.09	59	11.80	9.25	23.80	40.50	31	6.20	4.86	12.50
75.78	58	11.60	9.10	23.40	39.19	30	6.00	4.71	12.10
74.48	57	11.40	8.94	22.99					

Mit Xaxlinen.

Angulus Circumferentia 135 gr.

Semidiameter.	Polygon.	Relini.	Flanque.	Courteniff.	Semidiameter.	Polygon.	Relini.	Flanque.	Courteniff.
84	12.00	10.02	24.14		81.87	56	11.20	9.35	22.33
83					80.40	55	11.00	9.19	22.13
82					78.94	54	10.80	9.02	21.73
81					77.48	53	10.60	8.85	21.32
80					76.01	52	10.40	8.68	20.92
79					74.55	51	10.20	8.52	20.51
78					73.09	50	10.00	8.35	20.12
77					71.53	49	9.80	8.18	19.71
76					70.16	48	9.60	8.02	19.31
75					68.71	47	9.40	7.85	18.91
74					67.25	46	9.20	7.68	18.51
73					65.79	45	9.00	7.52	18.10
72					64.32	44	8.80	7.35	17.70
71					62.86	43	8.60	7.18	17.30
70					61.40	42	8.40	7.01	16.90
69					59.94	41	8.40	7.01	16.90
68					58.48	40	8.40	7.01	16.90
67					57.01	39	8.40	7.01	16.90
66					55.55	38	8.40	7.01	16.90
65					54.09	37	8.40	7.01	16.90
64					52.62	36	8.40	7.01	16.90
63					51.16	35	8.40	7.01	16.90
62					49.70	34	8.40	7.01	16.90
61					48.24	33	6.60	5.51	13.27
87.71	60	12.00	10.02	24.14	46.78	32	6.40	5.34	12.87
86.25	59	11.80	9.85	23.34	45.31	31	6.20	5.18	12.47
84.79	58	11.60	9.69	22.93	43.86	30	6.00	5.01	12.07
83.33	57	11.40	9.52	22.53					

Angulus Circumferentia 140 gr.

Circumferentia					Circumferentia				
Semidiameter	Polygon	Rekt.	Flanque.	Courtinent.	Semidiameter	Polygon	Rekt.	Flanque.	Courtinent.
84	12.00	10.22	23.50		90.61	56	11.20	9.54	21.93
83					88.99	55	11.00	9.37	21.54
82					87.37	54	10.80	9.20	21.15
81					85.86	53	10.60	9.03	20.71
80					84.13	52	10.40	8.86	20.37
79					82.52	51	10.20	8.69	19.98
78					80.90	50	10.00	8.52	19.52
77					79.28	49	9.80	8.35	19.19
76					77.66	48	9.60	8.18	18.80
75					76.04	47	9.40	8.01	18.41
74					74.43	46	9.20	7.84	18.02
73					72.81	45	9.00	7.51	17.63
72					71.19	44	8.80	7.66	17.23
71					69.57	43	8.60	7.32	16.79
70					67.95	42	8.40	7.15	16.45
69					66.33	41	8.40	7.15	16.45
68					64.72	40	8.40	7.15	16.45
67					63.10	39	8.40	7.15	16.45
66					61.48	38	8.40	7.15	16.45
65					59.86	37	8.40	7.15	16.45
64					58.24	36	8.40	7.15	16.45
63					56.62	35	8.40	7.15	16.45
62					55.00	34	8.40	7.15	16.45
61					53.38	33	6.60	5.78	11.92
97.58	60	12.00	10.22	23.50	51.76	32	6.40	5.46	11.55
95.46	59	11.85	10.05	23.11	50.14	31	6.20	5.28	12.14
93.84	58	11.68	9.88	22.58	48.54	30	6.00	5.11	11.75
92.23	57	11.40	9.71	22.33					

Angulus Circumferentia 144 gr.

B 2

COURNEMENT					COURNEMENT				
Cournement	Flanque	Sellin	Polygon	Semidiameter	Cournement	Flanque	Sellin	Polygon	Semidiameter
23.00	10.41	12.00	84	99.17	21.47	9.72	11.20	56	21.47
			83	97.40	21.02	9.54	11.00	55	21.02
			82	95.63	20.70	9.37	10.80	54	20.70
			81	94.86	20.03	9.20	10.60	53	20.03
			80	92.09	19.93	9.02	10.40	52	19.93
			79	90.32	19.55	8.85	10.20	51	19.55
			78	88.55	19.13	8.68	10.00	50	19.13
			77	86.78	18.80	8.50	9.80	49	18.80
			76	85.01	18.40	8.33	9.60	48	18.40
			75	83.24	18.02	8.15	9.40	47	18.02
			74	81.47	17.63	8.00	9.20	46	17.63
			73	79.70	17.25	7.82	9.00	45	17.25
			72	77.93	16.70	7.64	8.80	44	16.70
			71	76.16	16.48	7.43	8.60	43	16.48
			70	74.39	16.10	7.26	8.40	42	16.10
			69	72.62	16.10	7.26	8.40	41	16.10
			68	70.84	16.10	7.26	8.40	40	16.10
			67	69.07	16.10	7.26	8.40	39	16.10
			66	67.30	16.10	7.26	8.40	38	16.10
			65	65.53	16.10	7.26	8.40	37	16.10
			64	63.76	16.10	7.26	8.40	36	16.10
			63	61.99	16.10	7.26	8.40	35	16.10
			62	60.22	16.10	7.26	8.40	34	16.10
			61	58.45	16.10	7.26	8.40	33	16.10
23.00	10.41	12.00	60	56.68	12.26	5.55	6.40	32	12.26
22.62	10.24	11.80	59	54.91	11.88	5.38	6.20	31	11.88
22.23	10.05	11.60	58	53.13	11.50	5.21	6.00	30	11.50
21.85	9.89	11.40	57						

Mit Ravslinen.

Angulus Circumferentia 135 12.

Semidiameter.	Polygon.	Flanque.	Courtenff.
84	12.00	10.55	22.62
83			
82			
81			
80			
79			
78			
77			
76			
75			
74			
73			
72			
71			
70			
69			
68			
67			
66			
65			
64			
63			
62			
61			
115.91	60	12.00	10.55 22.62
113.98	59	11.80	10.37 22.24
112.02	58	11.60	10.20 21.87
110.11	57	11.40	10.02 21.49

+ 1000000000

Semidiameter.	Polygon.	Flanque.	Courtenff.
108.18	56	11.20	9.85 21.11
106.25	55	11.00	9.67 20.72
104.32	54	10.80	9.49 20.36
102.39	53	10.60	9.32 19.98
100.36	52	10.40	9.14 19.60
98.33	51	10.20	8.97 19.23
96.59	50	10.00	8.79 18.85
94.66	49	9.80	8.62 18.46
92.73	48	9.60	8.44 18.10
90.80	47	9.40	8.26 17.74
88.87	46	9.20	8.09 17.34
86.93	45	9.00	7.91 16.96
85.00	44	8.80	7.74 16.59
83.07	43	8.60	7.56 16.19
81.14	42	8.40	7.38 15.84
79.21	41	8.40	7.38 15.84
77.27	40	8.40	7.38 15.84
75.34	39	8.40	7.38 15.84
73.41	38	8.40	7.38 15.84
71.48	37	8.40	7.38 15.84
69.55	36	8.40	7.38 15.84
67.62	35	8.40	7.38 15.84
65.69	34	8.40	7.38 15.84
63.76	33	8.40	7.38 15.84
61.83	32	6.40	5.62 12.06
60.00	31	6.20	5.45 11.70
57.55	30	6.00	5.28 11.31

Angulus Circumferentia 150 gr.

B. 3

Semidiameter.	Polygon.	Rektini.	Plangue.	Courtenstf.	Semidiameter.	Polygon.	Rektini.	Plangue.	Courtenstf.
84	12.00	10.82	22.11		125.75	56	11.20	10.10	20.64
83					123.51	55	11.00	9.92	20.27
82					121.27	54	10.80	9.74	19.90
81					118.99	53	10.60	9.55	19.53
80					116.75	52	10.40	9.34	19.16
79					114.51	51	10.20	9.20	18.80
78					112.27	50	10.00	9.02	18.44
77					110.03	49	9.80	8.84	18.05
76					107.79	48	9.60	8.66	17.70
75					105.45	47	9.40	8.44	17.32
74					103.21	46	9.20	8.30	16.95
73					100.97	45	9.00	8.13	16.58
72					98.79	44	8.80	7.90	16.21
71					96.45	43	8.60	7.70	15.85
70					94.21	42	8.40	7.57	15.48
69					91.97	41	8.40	7.57	15.48
68					89.81	40	8.40	7.57	15.48
67					87.56	39	8.40	7.57	15.48
66					85.31	38	8.40	7.57	15.48
65					83.06	37	8.40	7.57	15.48
64					80.82	36	8.40	7.57	15.48
63					78.57	35	8.40	7.57	15.48
62					76.32	34	8.40	7.57	15.48
61					74.07	33	8.40	7.57	15.48
134.72	60	12.00	10.82	22.11	71.85	32	6.40	5.77	11.86
132.47	59	11.80	10.64	21.74	69.61	31	6.20	5.59	11.50
130.23	58	11.60	10.46	21.34	67.37	30	6.00	5.32	11.09
127.99	57	11.40	10.25	21.00					

Mit Xosinchen.

Angulus Circumferentia 154 17.

XVII.

Semidiameter.	Polygon.	Reclini.	Flanque.	Courinensf.
84	12.00	11.14	21.66	151.50
83				148.79
82				146.08
81				143.37
80				140.66
79				137.95
78				135.27
77				132.57
76				129.86
75				127.15
74				124.44
73				121.74
72				119.04
71				116.33
70				113.61
69				110.90
68				108.22
67				105.52
66				102.81
65				100.11
64				97.40
63				94.70
62				91.99
61				89.29
162.33	60	12.00	11.14	21.66
159.62	59	11.80	10.95	21.30
156.92	58	11.60	10.73	20.94
154.21	57	11.40	10.58	20.57
151.50	56	11.20	10.40	20.22
148.79	55	11.00	10.21	19.85
146.08	54	10.80	10.13	19.46
143.37	53	10.60	9.84	19.12
140.66	52	10.40	9.65	18.77
137.95	51	10.20	9.44	18.41
135.27	50	10.00	9.28	18.05
132.57	49	9.80	9.10	17.70
129.86	48	9.60	8.91	17.33
127.15	47	9.40	8.73	16.97
124.44	46	9.20	8.54	16.60
121.74	45	9.00	8.35	16.24
119.04	44	8.80	8.17	15.80
116.33	43	8.60	7.98	15.51
113.61	42	8.40	7.80	15.15
110.90	41	8.40	7.80	15.15
108.22	40	8.40	7.80	15.15
105.52	39	8.40	7.80	15.15
102.81	38	8.40	7.80	15.15
100.11	37	8.40	7.80	15.15
97.40	36	8.40	7.80	15.15
94.70	35	8.40	7.80	15.15
91.99	34	8.40	7.80	15.15
89.29	33	8.40	7.80	15.15
86.58	32	6.40	5.94	11.55
83.88	31	6.20	5.77	11.19
81.17	30	6.00	5.37	10.83

Angulus Circumferentia 158° 43'

Semidiameter.	Polygon.	Stellini.	Flanque.	Courtinentf.	Semidiameter.	Polygon.	Stellini.	Flanque.	Courtinentf.
84	12.00	11.28	21.20		178.89	56	11.20	10.53	39.74
83					175.70	55	11.10	10.34	19.42
82					172.50	54	10.80	10.14	19.07
81					169.31	53	10.60	9.96	18.72
80					166.11	52	10.40	9.80	18.26
79					162.92	51	10.20	9.59	18.10
78					159.81	50	10.00	9.40	17.62
77					156.61	49	9.80	9.21	17.32
76					153.51	48	9.60	9.02	17.95
75					150.39	47	9.40	8.82	16.60
74					157.19	46	9.20	8.15	16.25
73					153.86	45	9.00	8.47	15.90
72					140.63	44	8.80	8.27	15.54
71					137.43	43	8.60	8.08	15.19
70					134.23	42	8.40	7.90	15.00
69					131.04	41	8.40	7.90	15.00
68					127.85	40	8.40	7.90	15.00
67					124.66	39	8.40	7.70	15.00
66					121.46	38	8.40	7.90	15.00
65					118.17	37	8.40	7.90	15.00
64					114.06	36	8.40	7.90	15.00
63					110.87	35	8.40	7.90	15.00
62					107.67	34	8.40	7.90	15.00
61					104.47	33	8.40	7.90	15.00
191.77	60	12.00	11.28	21.21	101.18	32	8.40	7.90	15.00
188.58	59	11.80	11.09	20.87	98.00	31	6.20	5.83	10.95
185.38	58	11.60	10.90	20.48	95.89	30	6.00	5.64	10.60
182.09	57	11.40	10.70	20.13					

Angulus Circumferentia 162 gr.

Schidiameter.	Polygon.	Rektini.	Flanque.	Courtenf.	Schidiameter.	Polygon.	Rektini.	Flanque.	Courtenf.
84	12.00	11.66	21.25		214.48	56	11.20	10.88	19.81
83					210.63	55	11.00	10.70	19.45
82					206.78	54	10.80	10.49	19.13
81					202.93	53	10.60	10.30	18.77
80					199.08	52	10.40	10.11	18.42
79					195.23	51	10.20	9.91	18.16
78					191.33	50	10.00	9.72	17.71
77					187.48	49	9.80	9.52	17.35
76					183.87	48	9.60	9.33	17.00
75					180.14	47	9.40	9.12	16.65
74					176.21	46	9.20	8.94	16.30
73					172.38	45	9.00	8.76	15.94
72					168.55	44	8.80	8.55	15.58
71					164.72	43	8.60	8.36	15.23
70					160.89	42	8.40	8.17	14.88
69					157.06	41	8.40	8.17	14.88
68					153.23	40	8.40	8.17	14.88
67					149.40	39	8.40	8.17	14.88
66					145.57	38	8.40	8.17	14.88
65					141.74	37	8.40	8.17	14.88
64					137.91	36	8.40	8.17	14.88
63					134.06	35	8.40	8.17	14.88
62					130.23	34	8.40	8.17	14.88
61					126.40	33	8.40	8.17	14.88
229.84	60	12.00	11.66	21.25	122.57	32	8.40	8.17	14.88
225.99	59	11.80	11.47	20.90	118.74	31	6.20	6.02	10.98
222.18	58	11.60	11.27	20.54	114.72	30	6.00	5.83	10.63
218.33	57	11.40	11.07	20.12					

Angulus Circumferentia 165 gr.

Semidiameter.	Polygon.	Reclini.	Flanque.	Courtenst.	Semidiameter.	Polygon.	Reclini.	Flanque.	Courtenst.
84	12.00	11.87	20.98		267.89	56	11.20	11.08	19.58
83					263.09	55	11.00	10.88	19.23
82					258.30	54	10.80	10.68	19.00
81					253.52	53	10.60	10.48	18.87
80					248.74	52	10.40	10.29	18.18
79					243.95	51	10.20	10.09	17.83
78					239.17	50	10.00	9.89	17.50
77					234.39	49	9.80	9.69	17.13
76					239.60	48	9.60	9.50	16.80
75					234.72	40	9.40	9.46	16.43
74					220.03	46	9.20	9.30	16.18
73					215.25	45	9.00	9.10	15.73
72					210.47	44	8.80	8.90	15.39
71					205.69	43	8.60	8.71	15.04
70					200.91	42	8.40	8.51	14.69
69					196.13	41	8.40	8.51	14.69
68					191.33	40	8.40	8.51	14.69
67					186.55	39	8.40	8.51	14.69
66					181.77	38	8.40	8.51	14.69
65					176.99	37	8.40	8.51	14.69
64					172.20	36	8.40	8.51	14.69
63					167.42	35	8.40	8.51	14.69
62					162.64	34	8.40	8.51	14.69
61					157.86	33	8.40	8.51	14.69
287.00	60	12.00	11.87	20.98	153.08	32	8.40	8.51	14.69
282.21	59	11.80	11.67	20.63	148.30	31	6.20	6.13	10.84
277.44	58	11.60	11.44	20.28	143.50	30	6.00	5.98	10.49
272.63	57	11.40	11.24	21.60					

Angulus Circumferentia 168 gr.

Semidiameter.	Polygon.	Secinti.	Flanque.	Courinensf.	Semidiameter.	Polygon.	Secinti.	Flanque.	Courinensf.
84	12.00	12.16	20.78		356.87	56	11.20	11.35	19.39
83					350.49	55	11.00	11.15	19.05
82					344.12	54	10.80	10.94	18.70
81					337.76	53	10.60	10.74	18.35
80					331.38	52	10.40	10.54	18.01
79					325.00	51	10.20	10.34	17.66
78					318.64	50	10.00	10.13	17.32
77					312.23	49	9.80	9.93	16.97
76					305.87	48	9.60	9.73	16.62
75					299.50	47	9.40	9.53	16.24
74					293.14	46	9.20	9.32	15.93
73					286.77	45	9.00	9.12	15.58
72					280.39	44	8.80	8.92	15.24
71					274.01	43	8.60	8.72	14.89
70					267.65	42	8.40	8.51	14.54
69					261.28	41	8.40	8.51	14.54
68					254.91	40	8.40	8.51	14.54
67					248.50	39	8.40	8.51	14.54
66					242.13	38	8.40	8.51	14.54
65					235.77	37	8.40	8.51	14.54
64					229.42	36	8.40	8.51	14.54
63					222.99	35	8.40	8.51	14.54
62					216.64	34	8.40	8.51	14.54
61					210.26	33	8.40	8.51	14.54
382.36	60	12.00	12.16	20.78	203.89	32	8.40	8.51	14.54
375.99	59	11.80	11.96	20.43	197.53	31	6.20	6.20	10.70
369.61	58	11.60	11.75	20.10	191.18	30	6.00	6.08	10.39
363.25	57	11.40	11.55	19.74					

Angulus Circumferentia 171 gr.

C 3

Semidiameter.	Polygon.	Reolini.	Flanque.	Courtineff.	Semidiameter.	Polygon.	Reolini.	Flanque.	Courtineff.
84	12.00	12.41	20.80		504.22	56	11.20	11.58	19.41
83					495.21	55	11.00	11.37	19.07
82					486.21	54	10.80	11.17	18.72
81					477.20	53	10.60	10.96	18.34
80					468.20	52	10.40	10.76	18.03
79					459.19	51	10.20	10.55	17.68
78					450.19	50	10.00	10.34	17.33
77					441.19	49	9.80	10.13	16.99
76					432.18	48	9.60	9.93	16.64
75					423.18	47	9.40	9.72	16.30
74					414.18	46	9.20	9.51	15.95
73					405.17	45	9.00	9.30	15.60
72					396.17	44	8.80	9.10	15.25
71					387.17	43	8.60	8.90	14.91
70					378.16	42	8.40	8.70	14.56
69					369.16	41	8.40	8.70	14.56
68					360.16	40	8.40	8.70	14.56
67					351.15	39	8.40	8.70	14.56
66					342.15	38	8.40	8.70	14.56
65					333.14	37	8.40	8.70	14.56
64					324.13	36	8.40	8.70	14.56
63					315.13	35	8.40	8.70	14.56
62					306.12	34	8.40	8.70	14.56
61					297.12	33	8.40	8.70	14.56
540.24	60	12.00	12.41	20.80	288.11	32	8.40	8.70	14.56
531.23	59	11.80	12.20	20.45	279.11	31	6.40	6.41	10.75
522.23	58	11.60	12.00	20.24	270.11	30	6.00	6.21	10.40
513.22	57	11.40	11.79	20.03					

Die Kavelinen.

Angulus Circumferentia 173. 38.

		Courtenff.				Courtenff.			
		Flanque.		Sellini.		Flanque.		Sellini.	
		Polygon.		Semidiameter.		Polygon.		Semidiameter.	
	84	12.00	12.55	20.68	642.10	56	11.20	11.71	19.30
	83				630.64	55	11.00	11.50	19.00
	82				619.18	54	10.80	11.30	18.61
	81				607.52	53	10.60	11.10	18.27
	80				596.06	52	10.40	11.94	17.92
	79				584.60	51	10.20	10.67	17.58
	78				573.13	50	10.00	10.45	17.23
	77				561.67	49	9.80	10.25	16.89
	76				550.21	48	9.60	10.05	16.54
	75				538.74	47	9.40	9.83	16.20
	74				527.28	46	9.20	9.62	15.85
	73				515.82	45	9.00	9.41	15.51
	72				504.36	44	8.80	9.20	15.17
	71				492.90	43	8.60	8.99	14.82
	70				481.44	42	8.40	8.85	14.48
	69				461.97	41	8.40	8.85	14.48
	68				450.51	40	8.40	8.85	14.48
	67				449.05	39	8.40	8.85	14.48
	66				437.59	38	8.40	8.85	14.48
	65				426.13	37	8.40	8.85	14.48
	64				414.66	36	8.40	8.85	14.48
	63				403.20	35	8.40	8.85	14.48
	62				391.74	34	8.40	8.85	14.48
	61				380.28	33	8.40	8.85	14.48
	60	12.00	12.55	20.68	366.79	32	8.40	8.85	14.48
	59	11.80	12.34	20.34	355.33	31	6.20	6.48	10.70
	58	11.60	12.13	19.99	343.87	30	6.00	6.28	10.34
	57	11.40	11.92	19.65					

+ Die Kavelinen.

Angulus Circumferentia 174 59.

B3

Taffel der

Courtinenstücke.				Courtinenstücke.			
Flanque.	Recklin.	Dollwert.	Flanque.	Recklin.	Dollwert.	Flanque.	Recklin.
300	5	60	4	12.00	13	10	20.63
299	4	74.75	3				
298	4	74.50	3				
297	4	74.25	3				
296	4	74.00	3				
295	4	73.75	3				
294	4	73.50	3				
293	4	73.25	3				
292	4	73.00	3				
291	4	72.75	3				
290	4	72.50	3				
289	4	72.25	3				
288	4	72.00	3				
287	4	71.75	3				
286	4	71.50	3				
285	4	71.25	3				
284	4	71.00	3				
283	4	70.75	3				
282	4	70.50	3				
281	4	70.25	3				
280	4	70.00	3				
279	4	69.75	3				
278	4	69.50	3				
277	4	69.25	3				
276	4	69.00	3				
275	4	68.75	3				
274	4	68.50	3				
273	4	68.25	3				
272	4	68.00	3				
271	4	67.75	3				
Mit Nabeln.				Mit Nabeln.			
270	4	67.50	3	12.00	13	10	20.63
269	4	67.25	3				
268	4	67.00	3				
267	4	66.75	3				
266	4	66.50	3				
265	4	66.25	3				
264	4	66.00	3				
263	4	65.75	3				
262	4	65.50	3				
261	4	65.25	3				
260	4	65.00	3				
259	4	64.75	3				
258	4	64.50	3				
257	4	64.25	3				
256	4	64.00	3				
255	4	63.75	3				
254	4	63.50	3				
253	4	63.25	3				
252	4	63.00	3				
251	3	83.66	2				
250	3	83.33	2				
249	3	83.00	2				
248	3	82.66	2				
247	3	82.33	2				
246	3	82.00	2				
245	3	81.66	2				
244	3	81.33	2				
243	3	81.00	2				
242	3	80.66	2				
241	3	80.33	2				

platten Bollwerke.

				Courtenenstücke.			
				Flanque.			
				Festim.			
				Bollwerk.			
				Känge der Polygon			
				Rahl der Polygon			
				Känge der sinen.			
240	3	80.00	2	12.00	13.10	20.63	20.67
239	3	79.66	2				
238	3	79.33	2				
237	3	79.00	2				
236	3	78.66	2				
235	3	78.33	2				
234	3	78.00	2				
233	3	77.66	2				
232	3	77.33	2				
231	3	77.00	2				
230	3	76.66	2				
229	3	76.33	2				
228	3	76.00	2				
227	3	75.66	2				
226	3	75.33	2				
225	3	75.00	2				
224	3	74.66	2				
223	3	74.33	2				
222	3	74.00	2				
221	3	73.66	2				
220	3	73.33	2				
219	3	73.00	2				
218	3	72.66	2				
217	3	72.33	2				
216	3	72.00	2				
215	3	71.66	2				
214	3	71.33	2				
213	3	71.00	2				
212	3	70.66	2				
211	3	70.33	2				

Mit Kavelinen.

Mit Kavelinen.

Taffel der

Courtmenstücke				Courtmenstücke			
Flanque.	Recklin.	Vollwert.	Länge der Polygon	Zahl v Polygonē	Länge der Seiten.	Flanque.	Recklin.
		12.00	13.50	20.63	180		
					179		
					178		
					177		
					176		
					175		
					174		
					173		
					172		
					171		
					170		
					169		
					168		
					167		
					166		
					165		
					164		
					163		
					162		
					161		
					160		
					159		
					158		
					157		
					156		
					155		
					154		
					153		
					152		
					151		

Courtmenstücke				Courtmenstücke			
Flanque.	Recklin.	Vollwert.	Länge der Polygon	Zahl der Polygon	Länge der Seiten.	Flanque.	Recklin.
		12.00	13.10	20.63	150		
					149		
					148		
					147		
					146		
					145		
					144		
					143		
					142		
					141		
					140		
					139		
					138		
					137		
					136		
					135		
					134		
					133		
					132		
					131		
					130		
					129		
					128		
					127		
					126		
					125		
					124		
					123		
					122		
					121		

Mit Nadeln.

Mit Nadeln.

Platten Vollerwerk.

Seitenf. d. Platte	Flanque	Seitenf.	Vollerwerk	Seitenf. d. Platte	Flanque	Seitenf.	Vollerwerk
120	2	60.00	1	12.00	13.10	20.63	
119	2	59.50	1	11.90	12.99	20.46	
118	2	59.00	1	11.80	12.88	20.29	
117	2	58.50	1	11.70	12.77	20.02	
116	2	58.00	1	11.60	12.66	19.94	
115	2	57.50	1	11.50	12.55	19.77	
114	2	57.00	1	11.40	12.44	19.60	
113	2	56.50	1	11.30	12.33	19.42	
112	2	56.00	1	11.20	12.22	19.25	
111	2	55.50	1	11.10	12.11	19.08	
110	2	55.00	1	11.00	12.00	18.77	
109	2	54.50	1	10.90	11.90	18.60	
108	2	54.00	1	10.80	11.79	18.43	
107	2	53.50	1	10.70	11.68	18.24	
106	2	53.00	1	10.60	11.57	18.08	
105	2	52.50	1	10.50	11.46	17.97	
104	2	52.00	1	10.40	11.35	17.88	
103	2	51.50	1	10.30	11.24	17.69	
102	2	51.00	1	10.20	11.13	17.53	
101	2	50.50	1	10.10	11.02	17.37	
100	2	50.00	1	10.00	10.92	17.20	
99	2	49.50	1	9.90	10.81	17.03	
98	2	49.00	1	9.80	10.70	16.86	
97	2	48.50	1	9.70	10.59	16.68	
96	2	48.00	1	9.60	10.35	16.50	
95	2	47.50	1	9.50	10.25	16.33	
94	2	47.00	1	9.40	10.15	16.16	
93	2	46.50	1	9.30	10.05	16.00	
92	2	46.00	1	9.20	9.94	15.82	
91	2	45.50	1	9.10	9.82	15.36	

D

+ Folgende Linien sind nicht mehr Real.

Seitenf. d. Platte	Flanque	Seitenf.	Vollerwerk	Seitenf. d. Platte	Flanque	Seitenf.	Vollerwerk
90	2	45.00	1	9.00	9.71	15.49	
89	2	44.50	1	8.90	9.60	15.32	
88	2	44.00	1	8.80	9.49	15.25	
87	2	43.50	1	8.70	9.38	14.98	
86	2	43.00	1	8.60	9.20	14.81	
85	2	42.50	1	8.50	8.92	14.64	
84	2	42.00	1	8.40	8.83	14.47	
83	2	41.50	1	8.30	8.78	14.30	
82	2	41.00	1	8.20	8.72	14.13	
81	2	40.50	1	8.10	8.60	13.98	
80	2	40.00	1	8.00	8.51	13.78	
79	2	39.50	1	7.90	8.40	13.61	
78	2	39.00	1	7.80	8.29	13.44	
77	2	38.50	1	7.70	8.18	13.27	
76	2	38.00	1	7.60	8.29	13.07	
75	2	37.50	1	7.50	8.18	12.90	
74	2	37.00	1	7.40	8.07	12.73	
73	2	36.50	1	7.30	7.96	12.44	
72	2	36.00	1	7.20	7.85	12.37	
71	2	35.50	1	7.10	7.74	12.20	
70	2	35.00	1	7.00	7.63	12.03	
69	2	34.50	1	6.90	7.52	11.68	
68	2	34.00	1	6.80	7.41	11.51	
67	2	33.50	1	6.70	7.30	11.34	
66	2	33.00	1	6.60	7.19	11.17	
65	2	32.50	1	6.50	7.09	11.00	
64	2	32.00	1	6.40	7.00	10.83	
63	2	31.50	1	6.30	6.93	10.72	
62	2	31.00	1	6.20	6.82	10.66	
61	2	30.50	1	6.10	6.71	10.49	
60	2	30.00	1	6.00	6.60	10.32	

Profect Taffel

Vor die Real Werke *Ad. Freitagii.*

Füsse derer zwölf eine Kubite machen.

	IV.	V.	VI.	VII.	VIII.	IX.
Anleg des Walls.	54	50	66	72	78	84
Eufferliche Böschung des Walls.	6	7	7 $\frac{1}{2}$	8	9	9
Innerliche Böschung des Walls	12	14	15	16	18	18
Höhe des Walls.	12	14	15	16	18	18
Anleg der Brustwehr des Walls.	12	14	15	18	20	24
Eufferliche Böschung der Brustwehr.	2	2	2	2	2	2
Innerliche Böschung der Brustwehr.	1	1	1	1	1	1
Eufferliche Höhe der Brustwehr.	4	4	4	4	4	4
Innerliche Höhe der Brustwehr.	6	6	6	6	6	6
Breite der Banck.	3	3	3	3	3	3
Höhe der Banck.	1 $\frac{1}{2}$	1 $\frac{1}{2}$	1 $\frac{1}{2}$	1 $\frac{1}{2}$	1 $\frac{1}{2}$	1 $\frac{1}{2}$
Der Wallgang.	21	22	25 $\frac{1}{2}$	27	28	30
Der Gang des Unterwalls/ Fouslebray.	12	15	15	17	21	21
Brustwehr des Unterwalls wie droben.						
Die Verm.	6	6	6	6	6	6
Die Breite der Grabens.	72	84	96	108	120	132
Eufferliche vnd innerl. Böschung des Grabens	10	10	10	12	12	20
Die Tiefe des Grabens.	10	10	10	12	12	12
Der bedeckte Weg.	12	15	15	17	21	21
Die Bancke wie vorhin.						
Anleg der Brustwehr des bedeckten Wegs.	69	69	69	70	74	79
Innerliche Böschung vnd Höhe/ wie vorhin.						

Profiel Tafel

Derer Werke so geringer als Real.

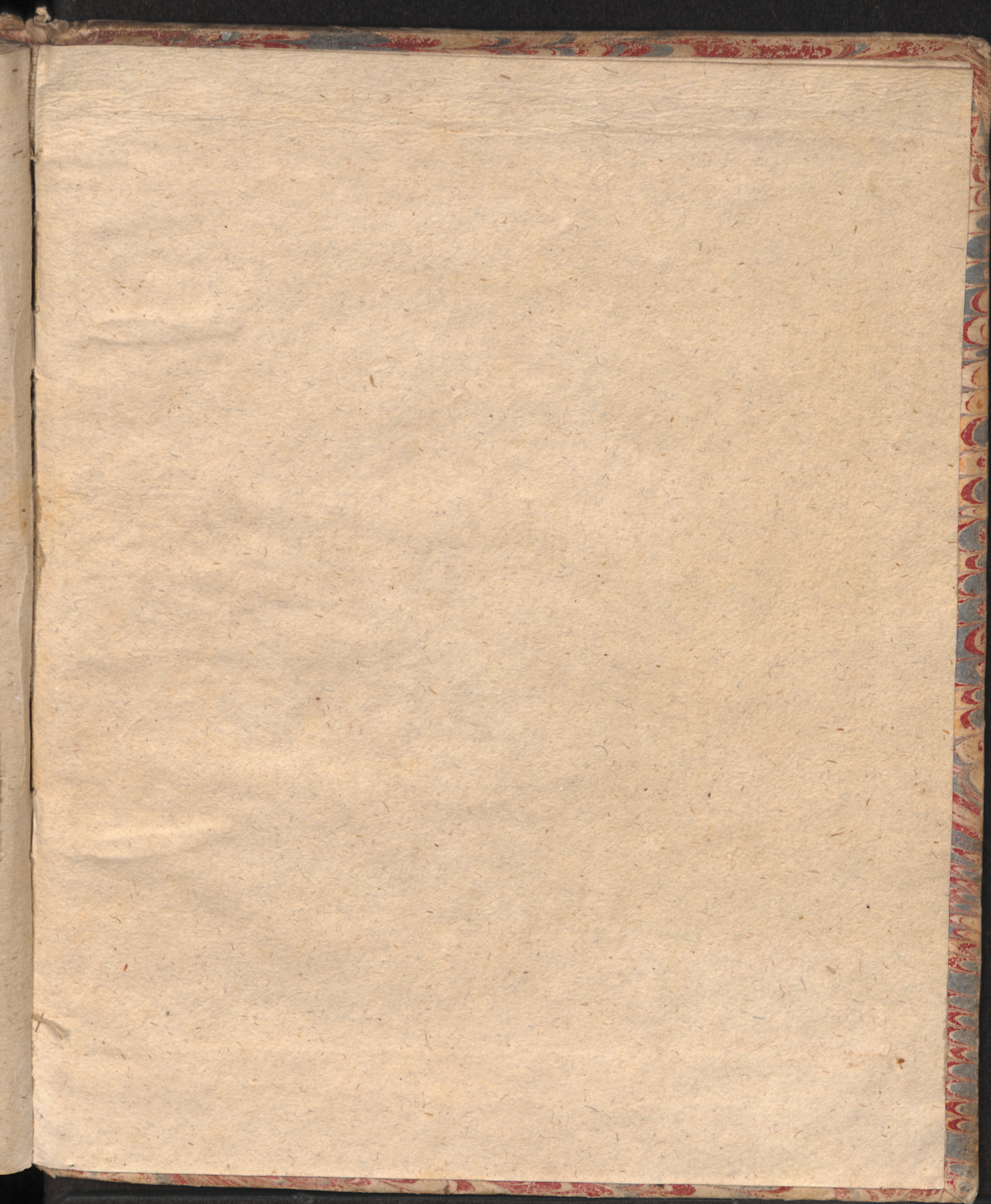
Schütze in zwölfstüffigen Kubten.

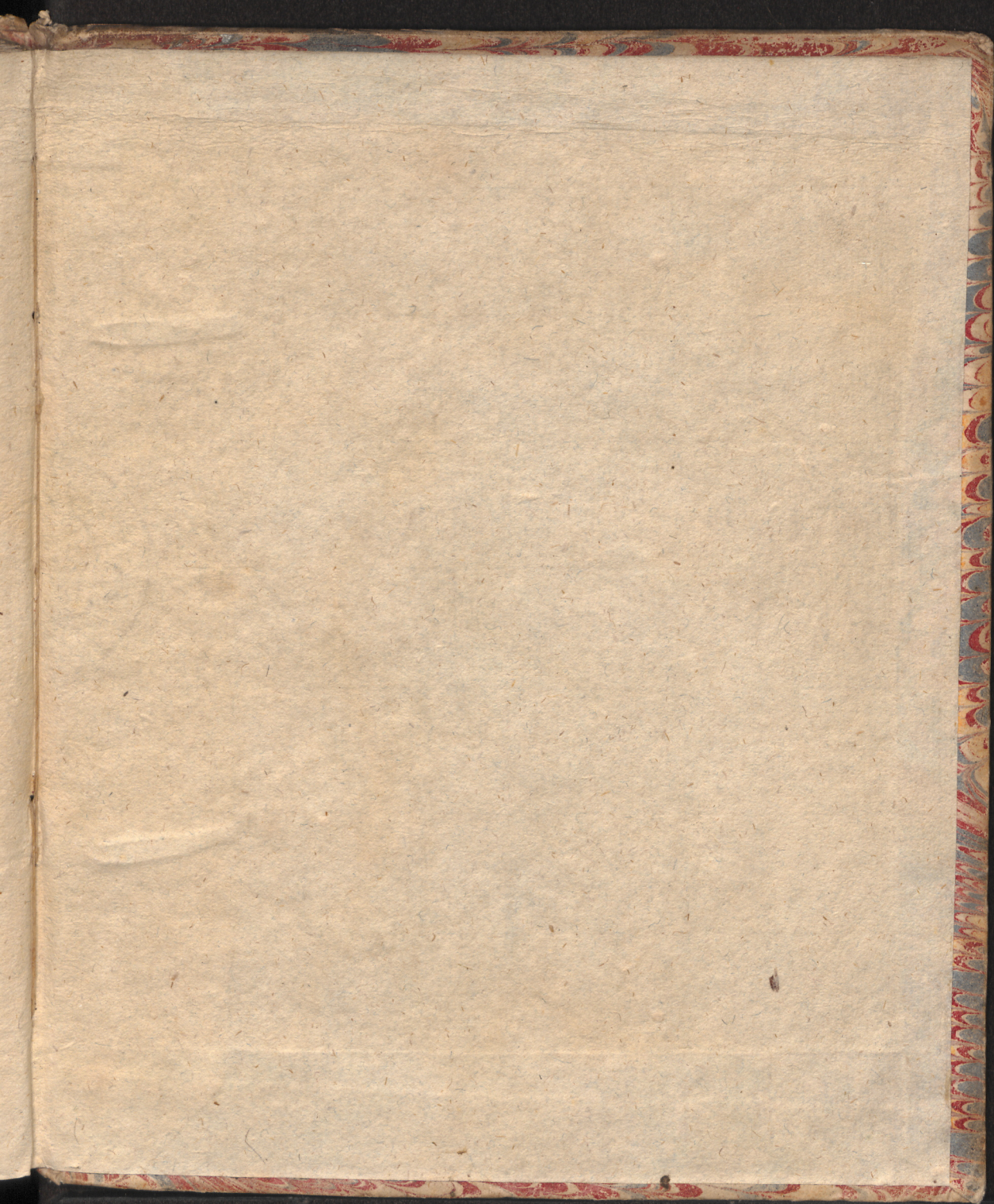
Anleg des Walls	40	24	18	15		60	
Äusserliche Böschung des Walls	3	2	2	$\frac{3}{4}$		2	
Innerliche Böschung des Walls	6	4	2	$\frac{4}{4}$		5	
Höhe des Walls	6	4	4	$\frac{1}{2}$		4	
Anleg der Brustwehr	18	8	8	8	$7\frac{1}{2}$	18	8
Äusserliche Böschung der Brustwehr	2	2	3	3	$2\frac{1}{2}$	3	$\frac{1}{2}$
Innerliche Böschung der Brustwehr	1	1	1	1	1	1	$\frac{1}{2}$
Äusserliche Höhe der Brustwehr	2	4	5	4	5	6	3
Innerliche Höhe der Brustwehr	6	6	6	6	6	6	3
Die Breite der Banck	3	3	3	3	3	3	3
Die Höhe der Banck	$1\frac{1}{2}$	$1\frac{1}{2}$	$1\frac{1}{2}$	$1\frac{1}{2}$	$1\frac{1}{2}$	$1\frac{1}{2}$	$1\frac{1}{2}$
Die Verm	3	3	3	3	3	4	
Die Breite des Grabens	48	30	18	18	12	10	
Beide Böschung des Grabens	10	6	3	5	5	3	
Die Tiefe des Grabens	10	6	6	5	5	6	
Die Breite am Landgrunde							11
Die Tiefe							3
Die Unterbreite							9
	Naveline/ HalbMond/ Horn- und Cron-Werk.	Schanz mit ganzen Wollwerken.	Schanz mit halben Wollwerken.	Reduyren, Stern Schancken.	Trenche, oder Lager- befestigung.	Battereyen.	Approchen.

Die Kunst zu rechnen
1771

Einige in der Rechnung

	17	18	19	20	21	22	23	24	25	26
Die Kunst zu rechnen										
Die Kunst zu rechnen										
Die Kunst zu rechnen										
Die Kunst zu rechnen										
Die Kunst zu rechnen										
Die Kunst zu rechnen										
Die Kunst zu rechnen										
Die Kunst zu rechnen										
Die Kunst zu rechnen										
Die Kunst zu rechnen										
Die Kunst zu rechnen										
Die Kunst zu rechnen										
Die Kunst zu rechnen										
Die Kunst zu rechnen										
Die Kunst zu rechnen										
Die Kunst zu rechnen										
Die Kunst zu rechnen										
Die Kunst zu rechnen										
Die Kunst zu rechnen										
Die Kunst zu rechnen										
Die Kunst zu rechnen										







platten Bollwerke.

Courtinenstücke		Flanque.		Reffini.		Bollwerk.		Känge der Polygon		Zahl der Polygon		Känge der Seiten.	
240	3	80.00	2	12.00	13.10	20.63							
239	3	79.66	2										
238	3	79.33	2										
237	3	79.00	2										
236	3	78.66	2										
235	3	78.33	2										
234	3	78.00	2										
233	3	77.66	2										
232	3	77.33	2										
231	3	77.00	2										
230	3	76.66	2										
229	3	76.33	2										
228	3	76.00	2										
227	3	75.66	2										
226	3	75.33	2										
225	3	75.00	2										
224	3	74.66	2										
223	3	74.33	2										
222	3	74.00	2										
221	3	73.66	2										
220	3	73.33	2										
219	3	73.00	2										
218	3	72.66	2										
217	3	72.33	2										
216	3	72.00	2										
215	3	71.66	2										
214	3	71.33	2										
213	3	71.00	2										
212	3	70.66	2										
211	3	70.33	2										

Mit Kavelinen.

Mit Kavelinen.

Courtinenstücke		Flanque.		Reffini.		Bollwerk.		Känge der Polygon		Zahl der Polygon		Känge der Seiten.	
210	3	70.00	2										
209	3	69.66	2										
208	3	69.33	2										
207	3	69.00	2										
206	3	68.66	2										
205	3	68.33	2										
204	3	68.00	2										
203	3	67.66	2										
202	3	67.33	2										
201	3	67.00	2										
200	3	66.66	2										
199	3	66.33	2										
198	3	66.00	2										
197	3	65.66	2										
196	3	65.33	2										
195	3	65.00	2										
194	3	64.66	2										
193	3	64.33	2										
192	3	64.00	2										
191	3	63.66	2										
190	3	63.33	2										
189	3	63.00	2										
188	3	62.66	2										
187	3	62.33	2										
186	3	62.00	2										
185	3	61.66	2										
184	3	61.33	2										
183	3	61.00	2										
182	3	60.66	2										
181	3	60.33	2										

Courtinenstücke		Flanque.	
13	10	20	67

