

Carl Arnd

Tabula Grammatica, Analyti Hebraeae Inserviens Ad Methodum Schickardianam confecta Adiuncta Harmonia Buxtorffii Wasmuthii, Opitii & Michaelis. De Mutatione Vocalium

Rostochii: Schwiegerovius, [ca. 1708]

<http://purl.uni-rostock.de/rosdok/ppn815568444>

Druck Freier  Zugang



CIc-1701^{4a}

TABULA
GRAMMATICA,
ANALYSI HEBRÆÆ
INSERVIENS

Ad
Methodum Schickardianam
confecta

Adjunctâ Harmoniâ BUXTORFFII WAS-
MUTHII, OPITII & MICHAELIS.

De
MUTATIONE VOCALIUM.



ROSTOCHII,
Typis Nicolai Schwiegerovii, Ampliff. Senat. Typogr.

CIc - 1701^{4a}

COMPOSITA EST HÆC TABULA
ANALYTICA,

Ex

- I. JOHANNIS BUXTORFFII Thesauro Grammatico Linguæ Sanctæ Hebrææ edit. Basil. M. DC. XXIX, in 8.
- II. MATTHIÆ WASMUTHI Facilitati Restituto Hebraismo edit. Kilon. in 4. M. DC. LXVI.
- III. HENRICI OPITII Atrio Linguæ Sanctæ. ed. Lips. d. anno M. DC. XCIX. in 4.
- IV. WILH. SCHICKARDI Institut. Linguæ Hebrææ sive Horologio Hebræo. Ed. Lips. in 8. anno M. DC. LXXXV.
- V. JOH. HENR. MICHAELIS erleichterte Hebræische Grammatica, Hal. anno M. DCC. II. in 8.



MUTATIO VOCALIUM HEBRAICA
KAMETZ.

Mutatur.

I. IN PATACH.

- (1) **C** Rescentibus Defectivis sequentē Dagesch ut כֶּחָלִידִים
Calidus כֶּחָלִידִים Schick. Reg. 121. Buxtorff. pag. 80.
Wasmuth, pag. 15. & 217. Opitius pag. 37. 66. Michaelis
pag. 45.
- (2) Propter accentum retractum ut קָמוֹתֵינוּ Quam bonum
Buxt. p. 42. Schick. Reg. 122. Wasm. p. 30. seqq. Opitius p. 39.
Michaelis p. 32.
- (3) In ultimâ Regiminis ob statum constructum; ut יְהוָה
יְהוָה verbum Domini. Schick. Reg. 123. Buxtorff. pag. 341.
Wasm. pag. 216. Opitius p. 66. Michaelis p. 67. 68.

II. IN SĀGHOL.

Sub ה Emphatico sequente alio Kametz sub gutturali. Ut
נֶבֶלֶתֵינוּ nubes. Schick. Reg. 136. R. 89. n. 2. Buxtorff.
pag. 384. Wasm. Reg. XVIII. pag. 53. Opitius p. 45. Mi-
chaelis pag. 83.

III. IN SCHEVA.

- (1) In Antepenultimâ Syllabâ Schick. Reg. 116. Buxtorff.
pag. 397. & 356. Wasm. pag. 213. in NOMINIBUS
& in VERBIS Wasm. p. 240. Opitius p. 65. 69. Michaelis
p. 67. seqq.
- (2) In prioribus Syllabis Regiminis seu status constructi
Schick. Reg. 117. Buxtorff. p. 397. coll. p. 75. & 356. Wasm.
Reg. 46. p. 216. Opitius p. 65. 66. Michaelis. p. 67.
seqq.

IV. IN CHOLEM.

Schickardus Reg. 133. n. 1. præsentē scil. Vav. ut מוֹרֵת ex
מוֹרֵת Buxtorff. p. 358. Michaelis p. 10.

MUTATIO VOCALIUM HEBRAICA TZERE.

Mutatur.

I. IN PATACH.

- (1) In terminatione Regiminis, Schick, Reg. 123. Buxtorff. pag. 358. Wasm. p. 223. Opitius p. 66. Michaelis p. 69.
- (2) Propter ultimam gutturalem, Schick, Reg. 138. Buxtorff. p. 100. Wasm. p. 202. Opitius p. 64. Michaelis pag. 69.
- (3) Patlach aliquando cum Tzere permutatur, Schick, Reg. 139. n. 6. } Opitius p. 64. Michaelis p. 27.
Wasm. p. 202.

II. IN SÆGHOL.

- (1) Propter accentum Retractum, Schickardus R. 112. Buxtorff, p. 42. Wasmuth. pag. 31. seqq. 35. seqq. Opitius p. 41. Michaelis p. 34.
- (2) In fine, sæpè accedente suffixo ך Schick, Reg. 126. n. 2. Wasmuth. p. 242, & 196. Opitius pag. 69. Michaelis. pag. 33.

III. IN CHIRECK.

- (1) In Crescentibus defectivis, Schick. Reg. 121. Buxtorff. p. 81. Wasmuth. p. 226. Opitius p. 66. Michaelis pag. 45.
- (2) Sæpè Euphoniæ gratiâ, Schick, Reg. 139. Buxtorff, p. 138. Wasmuth. p. 203. Opitius p. 64. Michaelis p. 27.

IV. IN SCHEVA.

- (1) In Antepenultimâ Syllabâ Schick. R. 116. Buxtorff. p. 358. 401. Wasm. p. 224. Opitius p. 66. Mich. p. 68.
- (2) In penultimâ Regiminis, Schick, Reg. 117. Buxtorff. p. 401. Wasm. p. 223. Opitius p. 66. Mich. p. 68.
- (3) In fine, crescente voce, Schick, Reg. 124. Buxtorff. p. 401. Wasm. p. 242. Opitius p. 69.
- (4) In initio { crescente voce, Schick, Reg. 120. }
& medio { Wasmuth. Opitius, Michaelis l. c. }

V. TZERE VICARIUM ut Sæghol mutatur, Wasm. Reg. XLVI. membr. IV. n. 6. Opitius. p. 67.

MUTA-

Singulari
anomalia
mutatur
(-) in (:)
in voce ך.
Schickard,
Reg. 124.
not. 2. maj.
not. 1. min.

(5)

MUTATIO VOCALIUM HEBRAICA

VI. TZERE in (-) Singulari quâdam variatione in צִי צִיִּי
 Wasm. p. 226. Reg. 46. m. 3. n. 3. Opitius p. 66. Buxtorff.
 Gr. Hebr. Th. p. 81. Schick, Reg. 124. n. 2. maj. n. 1. min.

CHRIECK MAGNUM.

Mutatur.

IN SCHEVA.

In Nominibus formæ שֵׁוָּהּ quando suffixa levia accedunt. Schick.
 Reg. 119. n. 2. Buxtorff. pag. 407. Wasm. pag. 233. Opitius.
 p. 67. Mich. p. 27.

CHOLEM.

Mutatur.

IN KAMETZ.

I. Schick. Reg. 124. in Verbis. In Nominibus ib. n. 4. Wasm.
 R. 46. m. VI. (β) pag. 232. Opitius. p. 67.

II. In PATACH.

Propter ultimam Gutturalem, Schickardus Reg. 138. Wasm.
 math. pag. 89. R. 46. m. III. n. 2. Opitius pag. 52. Mi-
 chaelis pag. 113.

III. IN KAMETZCHATUPH.

- (1) In Voce Millel crescente raro in aliâ. Schick, Reg. 120.
 Buxtorff. p. 405. Wasm. p. 230. Opitius. pag. 67.
- (2) In defectivo quoque crescente. Schick. Reg. 121.
 Wasm. p. 189. & 232. Opitius. p. 67. Mich. p. 33.
- (3) Ante Maccaph propter accentum retractum. Schick.
 Reg. 122. Buxtorff. p. 42. Wasm. p. 31. sq. 35. Opitius.
 pag. 41.
- (4) Ob suffixa שֵׁוָּהּ, צִי, צִיִּי in Imperat. & Infinit. Schick,
 Reg. 124. n. 5. Wasm. pag. 246. Opitius. pag. 69 Mi-
 chaelis pag. 101.

IV. IN KYBBUTZ.

Itidem sæpè in Voce Millel crescente. Schick. Reg. 120. n.
 3. Buxtorff. p. 405. Wasm. pag. 230. sq. Opitius. p. 67.

MUTATIO VOCALIUM HEBRAICA

V. IN SCHEVA.

- (1) Ut plurimum in voce Millel crescente. Schick. Reg. 120. Buxtorff. p. 79. Wasm. p. 230. Opitius. p. 67.
- (2) In fine, ob incrementum, nisi adfit Kametz aut scheva legibile. Schick. R. 124. Buxt. p. 108. Wasm. p. 245. Op. p. 69.

SCHURECK.

Mutatur in Cholem & Kybbutz propter Euphoniā. Schick. Reg. 139. Exempla suppeditat Buxtorffius Thef. Gr. P. I. c. 36. p. 212. &c. Conf. Wasm. p. 203. seq. Opitius pag. 64. Michaelis pag. 27.

PATACH.

Mutatur:

I. IN KAMETZ.

- (1) Propter Exclusum dagech. Schick. Reg. 129. Buxtorff. pag. 20. Wasm. p. 16. & p. 53. Opitius. p. 37. 45.
- (2) Propter accentum distinctivum. Schick. Reg. 130. Buxt. pag. 610. Wasm. p. 29. Opitius p. 40. Mich. p. 32.
- (3) In fine, si accedant suffixa. Schick. Reg. 132. Buxt. p. 521. Wasm. pag. 240. Opitius. pag. 69.

II. IN TZERE.

In Dissyllabis Millel quiescentibus si contrahantur. Ubi patach & chireck. parvum præsente (') Jodh in (..) abeunt. Schick. Reg. 133. n. 2. Buxt. pag. 406. coll. 359. Wasm. p. 222. Opitius. pag. 66.

III. IN SÆGHOL.

- (1) Ante ך ן & ף Kametzatas. Schick. Reg. 136. Wasm. p. 205. Opitius. p. 64. Mich. p. 28.
- (2) Nonnunquam planè irregulariter. Schick. ibid. Wasm. ibid.

IV. IN SCHEVA.

In fine ob incrementum. Schick. Reg. 124. Buxt. p. 108. Opitius pag. 69. Wasm. pag. 242. } in verbis. Et in nominibus Wasm. Reg. 46. m. II. n. I. p. 222. & m. IV. n. (a) p. 229. Opitius. p. 66. 67,

MUTA-

(7)

MUTATIO VOCALIUM HEBRAICA

V. IN CHIRECK.

Quorundam vocabulorum. Schick, Reg. 121. n. 4. Wasmuth, p. 222. Opitius pag. 66.

VI. PATACH VICARIUM eodem modo ac Sæghol mutatur. Schick. R. 137. n. 2. Wasm. R. 46. m. 4. n. 2. p. 229. Opitius pag. 67.

SÆGHOL.

Mutatur.

I. IN KAMETZ.

- (1) In voce Millel crescente Sæghol finale pluraliter in (◌) transit. Schick. Reg. 119. n. 3. Buxtorff, p. 77. Wasm. p. 227. Opitius p. 67.
- (2) Propter accentum distinctivum. Schick. Reg. 130. Buxtorff. p. 610. Wasm. p. 29. Opitius p. 40. Michaelis p. 32.
- (3) Ob Euphoniã. Schick. R. 139. Wasmuth. p. 202. Opitius p. 64. Michaelis p. 27.

II. IN TZERE.

- (1) In Regimine finita in ם. faciunt ם. Schick. Reg. 123. n. 3. Buxtorff. p. 359. Wasm. p. 228. Opitius p. 67. Michaelis p. 67.
- (2) Specialis est contractio (◌) (◌) in (◌). Schick. Reg. 127. n. 2. Buxtorff. p. 17. Wasm. Reg. V. p. 11. 12. Opitius p. 36. Michaelis p. 10. lit. (u)

III. IN CHOLEM.

In Diffyllabis Millel quiescentibus contrahitur Kametz & Sæghol præsentè Vav in cholem. Schick. Reg. 133. n. 1. Buxtorff. p. 358. Wasm. p. 216. Opitius p. 65. Michaelis p. 10

IV. IN PATACH.

Patach Vicarium est ante ultimas item sub & ante penultimas ם. ם. & ץ loco ם Sæghol. Schick. Reg. 137. Buxt. p. 70. Wasm. p. 204. Opitius p. 64. Michaelis p. 28.

MUTA-

MUTATIO VOCALIUM HEBRÆA

V. IN SCHEVA.

Omne Saghul vocis Millel crescentis corripitur in Scheva,
Schick, Reg. 119. Buxtorff. p. 401. Wasm. p. 227. Opitius
p. 67. Michaelis p. 71.

CHIRECK PARVUM.

Mutatur.

I. IN TZERE.

- (1) Propter exclusum Dagesch. Schick. Reg. 119. Buxtorff.
p. 20. Wasm. p. 16. sqq. Opitius p. 37. Michaelis p. 46.
(2) In Dissyllabics, Millel, Patach & Chireck parvum præ-
sente Jodh contrahuntur in (-) Schick. Reg. 133. n. 2.
Buxtorff. p. 359. & 406. Wasm. p. 222. Opitius p. 66.

II. IN SCHEVA.

In Voce פרי Schick. Reg. 119. n. 2. & n. 5. ib. Buxtorff.
p. 407. Wasm. p. 233. Opitius p. 67. Michaelis p. 94.

III. IN PATACH.

Schickard. Reg. 121. & 139. n. 7. Wasm. p. 222. 206. Opiti-
us p. 64. 66.

KAMETZ CATUPH.

Permutatur cum Kybbutz & Schureck propter Euphoniā
Schick. Reg. 139. Buxtorff p. 139. 142. Wasm. p. 207.
Opitius p. 64. Michaelis p. 27. 28.

KYBBUTZ.

Mutatur.

I. IN CHOLEM.

Propter Exclusum Dagesch. Schick. R. 119. Buxtorff. p. 20.
& alibi Wasm. Reg. VII. memb. iii. p. 16. Opitius p. 37.
Michaelis p. 46.

II. IN SCHURECK.

Propter Exclusum Dagesch. iidem & ibid. Conf. Wasm.
p. 203. Opitius p. 64. Michaelis p. 27.

MUTA-

MUTATIO VOCALIUM HEBRAICA

III. IN KAMETZ CATUPH.

Propter Euphoniā. Schick, Reg. 139. Buxtorff. passim.
Wasmuth, p. 207. Opitius pag. 64. Michaelis p. 28.

SCHEVA.

(Vicarium Scheva ut Sæghol mutatur. Wasmuth, Reg. XLVI.
membr. IV. n. α, pag. 229. Opitius. pag. 67.)

Mutatur.

I. IN KAMETZ.

- (1) In fine pluralis vocis Millel crescentis. Schick, Reg. 119.
n. 3. Buxt. p. 77. 398. sq. Wasm. p. 227. Opitius, pag.
67.
- (2) Propter accentum retractum. Schick, Reg. 131. Buxtorff.
p. 44. 612. Wasm. p. 33. Opitius. pag. 40. Michaelis.
p. 32. 33.
- (3) Si ortum fuerit ex Patach terminali verbi ut קרי trans-
fixerunt קרי configent eum Schick, Reg 132. Buxtorff.
pag. 613. Wasm. p. 33. Opitius. p. 40. Michaelis p. 33.
- (4) Vav & Lamed præfixa sæpè ante Monosyllaba & dis-
syllabica loco ך̄ (:) habent (׳) Schick, Reg. 93. n. 4.
Buxt. p. 581. 562. Wasm. p. 30. 55. 57. Opitius. p. 40. 46.
Michaelis. p. 84.
- (5) Ante accentum distinctivum. Schick, Reg. 130. 131. coll.
cum 149. n. 4. Wasm. p. 30. Opitius, pag. 40.

II. IN TZERE.

Si retrahatur Tonus per accentum distinctivum. Sæpè ex o-
rigine remanet (·) ut קרי Cavete. Schick, Reg. 131.
n. 2. Buxtorff. p. 613. Wasm. p. 33. Opitius, p. 40.

III. IN CHIRECK MAGNUM.

In præfixis קרי si sequatur Jodh Schevatum. Schick, Reg.
93. n. 2. Buxtorff. p. 16. & pag. 407. Wasmuth, pag. 55.
p. 8. Opitius p. 35. 45. Michaelis p. 10. coll. p. 84.

A

MU-

MUTATIO VOCALIUM HEBRAICA

IV. IN SCHURECK.

Vav præfixum ante aliud (:) aut literam labialem בִּרְפָּה
mutat Scheva suum in Schureck. Schick. Reg. 93. n. 5.
Buxtorff, p. 581. Wasmuth. p. 55. Opitius p. 45. Mich.
P. 84.

V. IN PATACH.

- (1) Si duo (:) (:) concurrunt & prius ortum fuit ex Sæghol.
(vel Patach vicario) tunc sub & ante gutturalem illud
mutatur in Patach. Quod imitantur aliæ quoque XXX.
Voces. Schick. Reg. 125. membr. 2. Buxt. p. 16. Wasm.
pag. 9. & 109. Opitius. pag. 35. 54.
- (2) Ad analogiam originis, si sub finem concurrant. Schick.
Reg. 126. Buxt. p. 16. 17. Wasmuth. ibid. Opitius. ibid.
- (3) Ante Cateph-patach. Schick. Reg. 127. Buxtorff. p. 17.
Wasmuth. p. 106. seqq. Opitius. pag. 54. Michaelis p.
50. 51.

SCHEVA.

Mutatur
VI.

IN SÆGHOL.

- (1) In Voce Millel ex Tzere oriundum sub gutturali.
Schick. Reg. 125. n. 2. Buxt. p. 16. Wasm. p. 109. Opi-
tius pag. 55.
- (2) Etiam sub finem, si concurrant ad analogiam originis.
Schick. R. 126. n. 2. Buxt. p. 16. Wasmuth. pag. 9. Opitius
pag. 36. Michaelis. pag. 48.
- (3) Ante Cateph Sæghol. Schick. R. 127. Buxt. p. 17. 580. 581.
Wasmuth. p. 106, 107. Opitius pag. 54 Michaelis. pag.
51. 52.
- (4) In suffixis propter accentum retractum. עֲרֵבָה Schick.
R. 131. Buxt. p. 612. Wasmuth. pag. 33. Opitius. pag.
41.
- (5) Sub primâ radicali futurorum Lamed He quando pati-
untur apocopen, ut עֲרֵבָה Schick. R. 85. n. 2. Buxtorff.
MU-

MUTATIO VOCALIUM HEBRAICA

p. 270. Wasmuth. pag. 143. Opitius pag. 57. Michaelis. p. 34.

(6) In praxi כלב Schick. Reg. 89. 90. & Wasmuth. pag. 53. 58. Opitius pag. 45. 46. Michaelis. pag. 84.

VII. IN CHIRECK PARVUM.

Si duo Schevajim ab initio concurrant. Schickardus Reg. 125. Buxt. p. 16 Wasmuth. pag. 9. Opitius pag. 35. Michaelis pag. 48.

VIII. IN CATEPH-SÆGHOL.

(1) Ex origine Tzere Scheva sub gutturali convertitur sæpe in (·) Buxtorff. p. 18. Schick. Reg. 134. m. 3. Wasm. p. 107. 108. 109. Opitius p. 54. 55.

(2) Quod & imitantur verba חיה &c. Schick. ibid. Wasm. p. 108. Opitius. ibid.

IX. IN CATEPH-PATACH.

Ut plurimum si sit sub gutturali legibile. Schick. Reg. 134. Buxt. p. 17. 18. Wasm. p. 107. Sub non gutturali Wasm. p. 208. Opit. p. 64. Schick. Reg. 134. n. 3.

X. IN PATACH GNUBHA.

Mutum sub ultimis חה ע intellectum. Schick. Reg. 135. Buxtorff. p. 15. Wasmuth. p. 7. Opitius p. 35. Mich. pag. 48. lit. t. p. 53.

XI. IN KAMETZ CATUPH.

Wasmuth. Reg. XLIV. lit. μ. pag. 208. Sub non gutturalibus quandoque. Schick. Reg. 134. n. 3. Opitius. p. 64. Buxtorff. p. 18.

(·) (·) CATEPH PATACH. CATEPH SÆGHOL & KAMETZ CATUPH. (·)

I. Abjiciunt suum Cateph ante Scheva. Schickardus R. 128. Buxt. p. 18. Wasm. pag. 10. Opitius p. 36. Michaelis p. 50. seqq.

II. Contrahuntur (·) & (·) Patach & Catephpatach speciali
A 2 MUL

MUTATIO VOCALIUM HEBRAICA

- contractione in (-) Patach. Catephæghol & sæghol (·) (·)
in (-) Tzere. Schick. Reg. 127. n. 2. Buxt. p. 17. Wasm. p.
II. 12. Opitius p. 36. Michaelis. p. 47.
III. Euphonia ergo retinent sæpè solum Cateph. Schick. R. 128.
Buxtorff. ibid. p. 18. Wasmuth. p. 115. Opitius p. 55.

VAV CHOLEM.

Mutatur.

In (·) vel (·) ut e.g. ex וַיִּדְבַּר, dies, fit וַיִּדְבַּר. Wasmuth.
p. 232 coll. p. 213. Opitius p. 67. Schickardus R. 121. Mi-
chaelis p. 159. 100.



IMITATIO VOCALIUM HEBRAICA

10. Wasmuth. pag. 143. Opitius pag. 57. Michaelis pag. 34.

praxis כלב. Schick. Reg. 89. 90. & Wasmuth. pag. 58. Opitius pag. 45. 46. Michaelis. pag. 84.

IN CHIRECK PARVUM.

Schevajim ab initio concurrant. Schickardus Reg. Buxt. p. 16 Wasmuth. pag. 9. Opitius pag. 35. Michaelis pag. 48.

IN CATEPH-SÆGHOL.

igine Tzere Scheva sub gutturali convertitur sœ. (-) Buxtorff. p. 18. Schick. Reg. 134. m. 3. Wasm. p. 108. 109. Opitius p 54. 55. d & imitantur verba חיה &c. Schick. ibid. Wasm. p. 18. Opitius. ibid.

IN CATEPH-PATACH.

num si sit sub Gutturali legibile. Schick. Reg. 134. Buxt. p. 18. Wasm. p. 107. Sub non gutturali Wasm. p. 208. p. 64. Schick. Reg. 134. n. 3.

IN PATACH GNUBHA.

sub ultimis ח ח ף intellectum. Schick. Reg. 135. Buxtorff. p. 15. Wasmuth. p. 7. Opitius p. 35. Michaelis. lit. t. p. 53.

IN KAMETZ CATUPH.

h. Reg. XLIV. lit. μ. pag. 208. Sub non-gutturali- quandoque. Schick. Reg. 134. n. 3. Opitius. p. 64. Buxtorff. p. 18.

(-) (-)

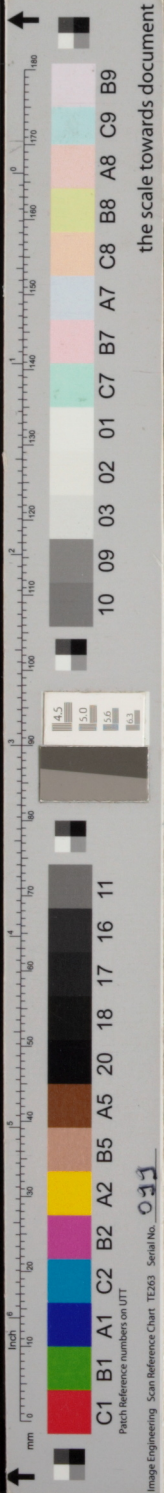
CATEPH PATACH. GATEPH SÆGHOL

& KAMETZ CATUPH. (-)

at suum Cateph ante Scheva. Schickardus R. 128. p. 18. Wasm. pag. 10. Opitius p. 36. Michaelis p. 50.

hantur (-) & (-) Patach & Catephpatach speciali MU-

A 2



the scale towards document

Image Engineering Scan Reference Chart T263 Serial No. 011