


Partie. á Viola da Gamba vel Violino Solo. con Cembalo

[Musikalienhandschrift, Stimmen], [18.Jh.]

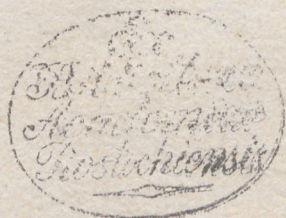
<http://purl.uni-rostock.de/rosdok/ppn864240600>

Musikhandschrift Freier  Zugang



Partie.
 a.
 Viola da Gamba vel
 Violino Solo. con
 Cembalo.

Theodorus Sigismundus



Musica Sacra. XVIII. 58²²

1

Allemande.

Viola da Gamba.

J. Sigwartzkyff.

Handwritten musical notation for the Allemande section, consisting of four staves of music in treble clef with a key signature of one sharp (F#).

Courante.

Handwritten musical notation for the Courante section, consisting of four staves of music in treble clef with a 3/7 time signature and a key signature of one sharp (F#).

Musica Sacra. XVIII. 58. 22.



Sarabande.

Handwritten musical notation for the Sarabande section, consisting of three staves of music. The notation is in treble clef with a key signature of one sharp (F#) and a common time signature (C). The first staff begins with a treble clef and a common time signature. The second staff has a '3' above the first measure, indicating a triplet. The third staff ends with a double bar line and a repeat sign.

Double.

Handwritten musical notation for the Double section, consisting of three staves of music. The notation is in treble clef with a key signature of one sharp (F#) and a 3/4 time signature. The first staff begins with a treble clef and a 3/4 time signature. The second and third staves continue the melodic line with various rhythmic patterns and accidentals.

Passepied.

Handwritten musical notation for the Passepied section, consisting of three staves of music. The notation is in treble clef with a key signature of one sharp (F#) and a 3/4 time signature. The first staff begins with a treble clef and a 3/4 time signature. The second and third staves continue the melodic line with various rhythmic patterns and accidentals.

Pouree.

Cique.

The image shows a page of handwritten musical notation on aged paper. It contains two pieces: 'Pouree' and 'Cique'. 'Pouree' is written on the first four staves, and 'Cique' is written on the last four staves. Each piece consists of a single melodic line on a treble clef staff and a corresponding bass line on a bass clef staff. The notation includes various note values, rests, and accidentals. The paper shows signs of age, including water stains and foxing.

Menuet.

Handwritten musical notation for the first piece, 'Menuet'. It consists of three staves of music in treble clef with a 3/8 time signature. The notation includes various note values, rests, and accidentals.

Gigue.

Handwritten musical notation for the second piece, 'Gigue'. It consists of five staves of music in treble clef with a 3/8 time signature. The notation is more complex, featuring many sixteenth notes and rests.

Cembalo.

Allemande.

Courante.

Musica Sacca. XVIII. 58. 22.



Sarabande

Handwritten musical notation for the Sarabande piece, consisting of two staves. The notation includes notes, rests, and accidentals (sharps and naturals). The first staff begins with a treble clef and a key signature of one sharp (F#). The second staff begins with a bass clef. The music is written in a cursive, historical style.

A single staff of handwritten musical notation, likely a continuation or a separate section of the Sarabande piece. It begins with a bass clef and a key signature of one sharp (F#).

Passepied.

Handwritten musical notation for the Passepied piece, consisting of three staves. The notation includes notes, rests, and accidentals (sharps and naturals). The first staff begins with a treble clef and a key signature of one sharp (F#). The second and third staves begin with bass clefs. The music is written in a cursive, historical style.

Four empty musical staves at the bottom of the page, consisting of four sets of five horizontal lines each.

Bourée.

Handwritten musical score for Bourée, consisting of five staves of music. The notation includes treble and bass clefs, a key signature of one sharp (F#), and a 6/8 time signature. The music features various rhythmic values such as eighth and sixteenth notes, along with rests and accidentals. The piece concludes with a double bar line and repeat dots.

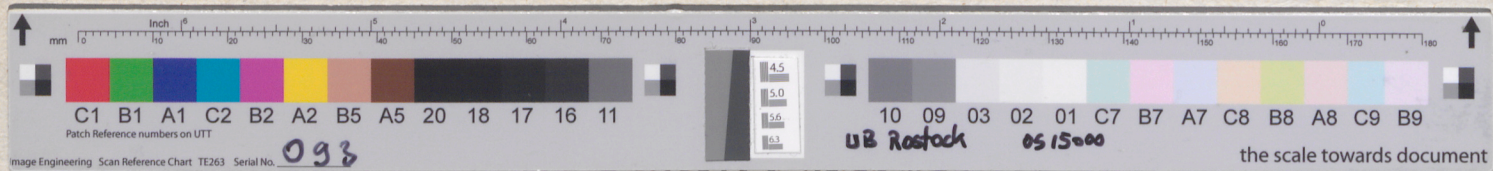
Gigue.

Handwritten musical score for Gigue, consisting of three staves of music. The notation includes treble and bass clefs, a key signature of one sharp (F#), and a 3/4 time signature. The music is characterized by a lively, rhythmic pattern with frequent sixteenth notes and rests. The piece ends with a double bar line and repeat dots.

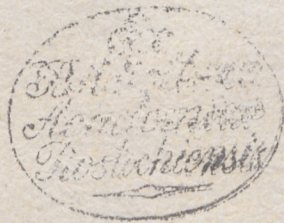
Menuet.

Gigue.

Partie.
a.
Viola da Gamba vel
Violino Solo. con
Cembalo.



Handwritten text, partially obscured by the ruler.



Musica Saec. XVIII. 5822